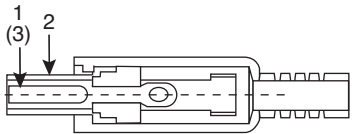
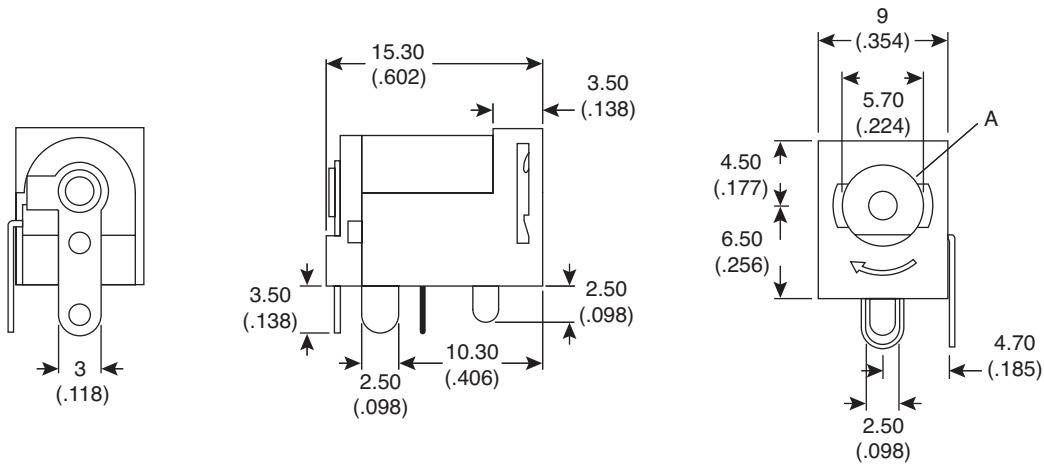


Lockable DC Jack

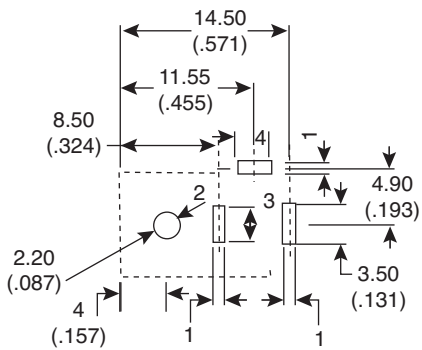
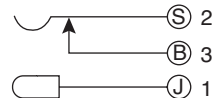
161-0721-EX



Lockable DC Jack



CENTER PIN:
02.00.05



HOLE LAYOUT
BOTTOM VIEW

Dimensions: mm (in.)

SPECIFICATIONS

Rating:	12VDC 0.5A
Contact resistance:	30mΩ max
Insulation resistance:	DC500V/100MΩ min
Withstand voltage:	AC500V 1 minute-Use with standard DC power plugs and the locking detent DC power plugs, 171-0721-EX, 171-0722-E
Body:	Polycarbonate
Insulator:	Polycarbonate
Terminal A:	Tin plated brass
Terminal B:	Tin plated brass
Contact spring:	Tin plated copper
Pin:	Nickel plated brass
Tolerance:	±0.3
Insertion Force:	5 to 20N
Extraction Force:	4 to 15N
Life Cycles:	5,000 cycles min.
Operating Temp.:	-20°C to 70°C
RoHS Compliant by Exemption	

Date Last Revised: 01-11-08

Available from Mouser Electronics
1-800-346-6873 / www.mouser.com

KC- 300859

161-0721-EX

Mouser Electronics

Authorized Distributor

Click to View Pricing, Inventory, Delivery & Lifecycle Information:

[Kobiconn:](#)

[161-0721-EX](#) [161-0721-E](#)