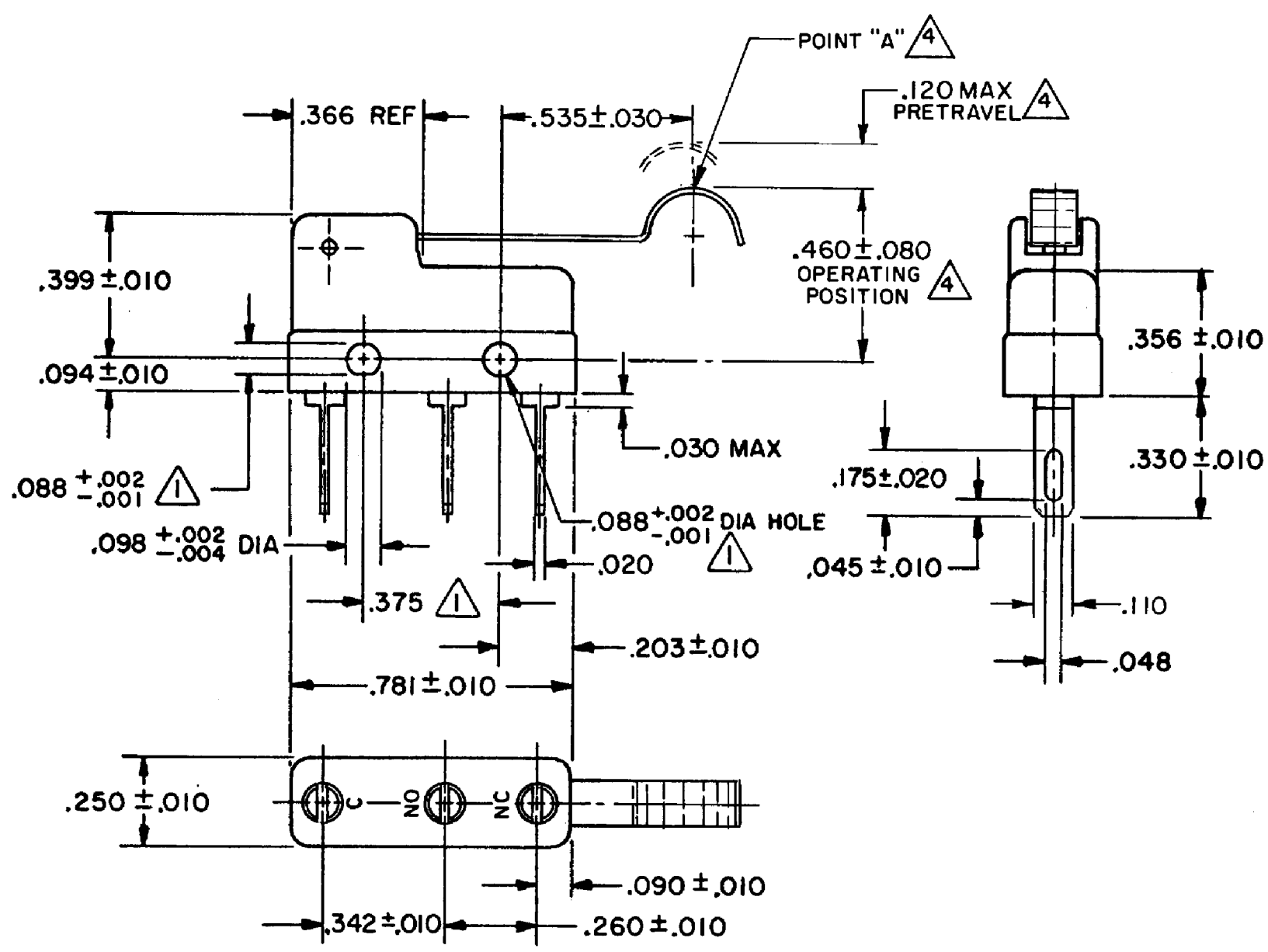
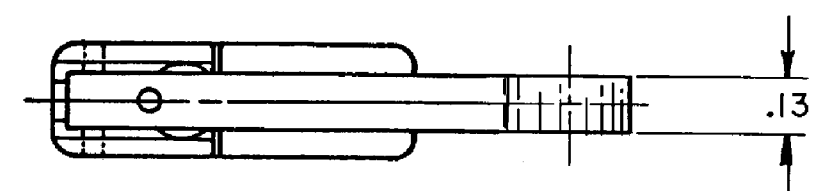


HONEYWELL
PART NUMBER
311SM605-H4
PRODUCT CODE
TZA2751

REV	DOCUMENT	CHANGED BY	CHECK
5	0038114	KVS 03JUN08	ASD



- NOTES**
- 1 MOUNTING HOLES WILL ACCEPT PINS OR SCREWS OF .087 MAX DIA ON .375 ± .002 CENTERS
 - 2 - TERMINALS ARE PLATED FOR SOLDERING
 - 3 - SWITCH WILL WITHSTAND TEMPERATURE OF 250° F
 - 4 CHARACTERISTICS TAKEN AT POINT "A"

RELEASE NO.	PR - 5499
REPLACES	-

CHARACTERISTICS 4

OPERATING FORCE -- 30 GRAM MAX

RELEASE FORCE -- 5 GRAM MIN

DIFFERENTIAL TRAVEL -- .027 MAX

OVERTRAVEL -- .026 MIN

ELECTRICAL DATA

CONTACT ARRANGEMENT
SPDT

30 VOLTS DC RATING

	SEA LEVEL	50,000 FT
INDUCTIVE	3 AMP	2.5 AMP
RESISTIVE	5 AMP	5 AMP

MAXIMUM INRUSH 24 AMP

APPROVALS

KEMA, CE	5A, 250V ~ T85 1E4	CE
UL, CSA	5A, 250 VAC	UL BRAND L4

DESIGN UNITS: INCH

TOLERANCES UNLESS NOTED:

NO PLACE	X	±	-
ONE PLACE	.X	±	0.030
TWO PLACE	.XX	±	0.015
THREE PLACE	.XXX	±	0.005
FOUR PLACE	.XXXX	±	-
ANGLES		±	-

THIRD ANGLE PROJECTION

DRAWN	VK	12 NOV 07
CHECK	RJ	12 NOV 07

THIS DRAWING COVERS A PROPRIETARY ITEM AND IS THE PROPERTY OF HONEYWELL. THIS DRAWING IS NOT TO BE COPIED OR USED WITHOUT THE PERMISSION OF HONEYWELL.

INTERPRET PER ANSI Y14.5M-1982 OTHER HONEYWELL ENGINEERING STANDARDS MAY APPLY

RASTER

Honeywell

TITLE
SWITCH - BASIC

SIZE	TYPE	DRAWING NAME	REV
B	I	311SM605-H4	5

SCALE - WEIGHT .006 LB MAX SHEET 1 OF 1