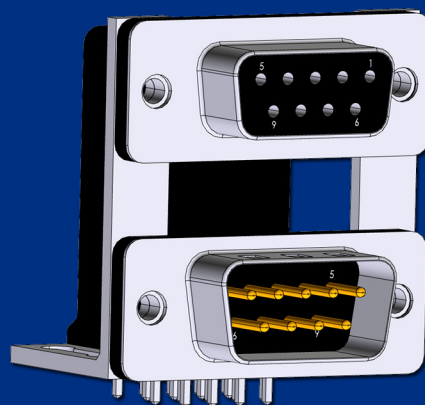




# DUAL-PORT

## STACKED D-SUB TECHNOLOGY

DUAL PORT I/O connectors are designed for applications requiring multiple connector ports with limited PCB space. Two Right Angle D-Sub connectors are stacked one on top of another, creating a single Dual Port connector with a very condensed footprint.



### FEATURES & BENEFITS

- Available in 4 Industry Standard Sizes:  
(Standard Density: 9 | 15 | 25 | 37)
- Available in 3 Different Connector Spacing Options  
(0.625" | 0.750" | 0.900")
- Available in 6 Different Hardware Configurations
- High Temperature UL94V-0 Thermoplastic  
(260C Process Temp)
- High Performance Stamped Contacts



Follow NorComp:



[http:// www.norcomp.net](http://www.norcomp.net)

# NORCOMP

# DUAL-PORT

## Stacked D-Sub Technology

### 0.750" SPACING

FEMALE over MALE  
MALE over FEMALE  
FEMALE over FEMALE  
MALE over MALE

### SERIES

178-YYY-313RYY1  
178-YYY-413RYY1  
178-YYY-513RYY1  
178-YYY-613RYY1

### SIZE

9 / 15 / 25 / 37 Position  
9 / 15 / 25 / 37 Position  
9 / 15 / 25 / 37 Position  
9 / 15 / 25 / 37 Position

### 0.900" SPACING

FEMALE over MALE  
MALE over FEMALE  
FEMALE over FEMALE  
MALE over MALE

### SERIES

179-YYY-313RYY1  
179-YYY-413RYY1  
179-YYY-513RYY1  
179-YYY-613RYY1

### SIZE

9 / 15 / 25 / 37 Position  
9 / 15 / 25 / 37 Position  
9 / 15 / 25 / 37 Position  
9 / 15 / 25 / 37 Position

### 0.625" SPACING

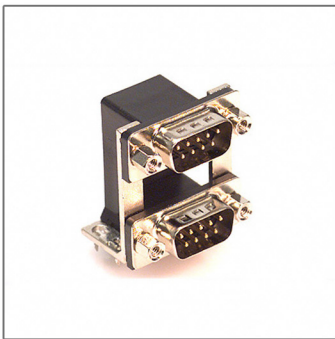
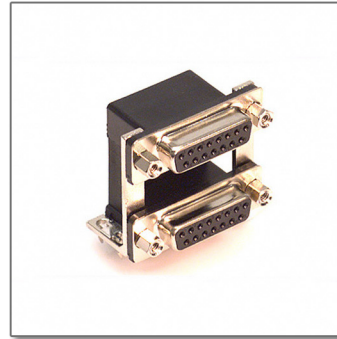
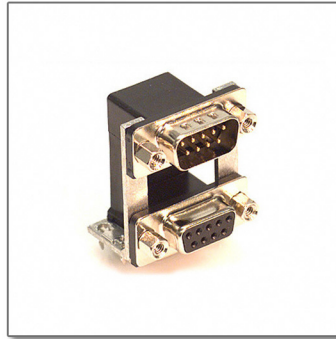
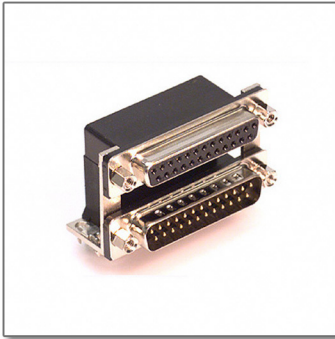
FEMALE over MALE  
MALE over FEMALE  
FEMALE over FEMALE  
MALE over MALE

### SERIES

189-YYY-313RYY1  
189-YYY-413RYY1  
189-YYY-513RYY1  
189-YYY-613RYY1

### SIZE

9 / 15 / 25 / 37 Position  
9 / 15 / 25 / 37 Position  
9 / 15 / 25 / 37 Position  
9 / 15 / 25 / 37 Position



## DUAL-PORT



For More Information

[www.norcomp.net](http://www.norcomp.net)  
800-849-4450

 **NORCOMP**

