

# FL SWITCH SFN 14TX/2FX - Industrial Ethernet Switch



2891935

<https://www.phoenixcontact.com/us/products/2891935>

Please be informed that the data shown in this PDF document is generated from our online catalog. Please find the complete data in the user documentation. Our general terms of use for downloads are valid.



Ethernet switch, 14 TP RJ45 ports, automatic detection of data transmission speed of 10 or 100 Mbps (RJ45), autocrossing function. Two FO ports in SC format.

## Product description

Standard function Ethernet switch with 14 RJ45 ports and 2 SC-D fiber optic ports. Provides automatic detection of data transmission speed of 10 or 100 Mbps (RJ45), autocrossing function, 12 V DC ... 48 V DC input voltage, redundant power supply capable with remote alarming.

## Your advantages

- RJ45 ports support a transmission speed of 10/100 Mbps
- Fiber-optic ports support 100 Mbps
- 16 ports in a narrow metal housing with redundant input voltage
- Security options with cable locking
- Local diagnostic indicators with LEDs
- Devices are available for the standard temperature range (0 °C ... 60 °C) and wide temperature range (-40 °C ... 75 °C)
- Auto negotiation and autocrossing detection simplifies installation and setup

## Commercial data

Item number	2891935
Packing unit	1 pc
Sales key	DN19
Product key	DNN113
Catalog page	Page 293 (C-6-2019)
GTIN	4046356551601
Weight per piece (including packing)	1,055.1 g
Weight per piece (excluding packing)	870 g
Customs tariff number	85176200
Country of origin	TW

# FL SWITCH SFN 14TX/2FX - Industrial Ethernet Switch



2891935

<https://www.phoenixcontact.com/us/products/2891935>

## Technical data

### Dimensions

Width	70 mm
Height	135 mm
Depth	110 mm

### Material specifications

Housing material	Aluminum
------------------	----------

### Mounting

Mounting type	DIN rail mounting
---------------	-------------------

### Interfaces

#### Ethernet (RJ45)

Connection method	RJ45
Note on the connection method	Auto negotiation and autocrossing
Transmission speed	10/100 Mbps
Transmission physics	Ethernet in RJ45 twisted pair
Transmission length	100 m (per segment)
Signal LEDs	Data receive, link status
No. of channels	14 (RJ45 ports)

#### Fiber optic interface

Connection method	SC
Transmission speed	100 Mbps (full duplex)
Transmission physics	multi-mode fiberglass
Transmission length	12.1 km (fiberglass with F-G 62.5/125 0.7 dB/km F1000) 7.1 km (fiberglass with F-G 50/125 0.7 dB/km F1200)
Wavelength	1300 nm
No. of channels	2 (SC multi-mode)

### Product properties

Type	Block design
Product type	Switch
Product family	Unmanaged Switch SFN
MTTF	32.8 Years (MIL-HDBK-217F standard, temperature 25°C, operating cycle 100%)

#### Insulation characteristics

Protection class	III (VDE 0106, IEC 60536)
------------------	---------------------------

#### Switch functions

Basic functions	Unmanaged switch / auto negotiation, complies with IEEE 802.3, store-and-forward switching mode, includes alarm contacts
-----------------	--

# FL SWITCH SFN 14TX/2FX - Industrial Ethernet Switch



2891935

<https://www.phoenixcontact.com/us/products/2891935>

Status and diagnostic indicators	LEDs: U <sub>S1</sub> , U <sub>S2</sub> (redundant voltage supply), link and activity per port
Additional functions	Autonegotiation
Security functions	
Basic functions	Unmanaged switch / auto negotiation, complies with IEEE 802.3, store-and-forward switching mode, includes alarm contacts

## Electrical properties

Local diagnostics	US Supply voltage Green LED
	LNK/ACT Link status/data transmission Green LED
	100 Data transmission speed Yellow LED
Maximum power dissipation for nominal condition	8.4 W
Test section	500 V DC 1 min.
Transmission medium	Copper
	FO

## Supply

Supply voltage (DC)	24 V DC (redundant)
Supply voltage range	12 V DC ... 48 V DC
Power supply connection	Via COMBICON, max. conductor cross section 2.5 mm <sup>2</sup>
Residual ripple	3.6 V <sub>PP</sub> (within the permitted voltage range)
Max. current consumption	700 mA (at 12 V DC)
Typical current consumption	245 mA (at U <sub>S</sub> = 24 V DC)

## Connection data

Connection method	Screw connection
Conductor cross section, rigid	0.2 mm <sup>2</sup> ... 2.5 mm <sup>2</sup>
Conductor cross section, flexible	0.2 mm <sup>2</sup> ... 2.5 mm <sup>2</sup>
Conductor cross section AWG	30 ... 12
Stripping length	7 mm

## Environmental and real-life conditions

### Ambient conditions

Degree of protection	IP20
Ambient temperature (operation)	0 °C ... 60 °C
Ambient temperature (storage/transport)	-40 °C ... 85 °C
Permissible humidity (operation)	5 % ... 95 % (non-condensing)
Permissible humidity (storage/transport)	5 % ... 95 % (non-condensing)
Shock	25g, in accordance with IEC 60068-2-27
Vibration (operation)	in acc. with IEC 60068-2-6: 5g, 150 Hz
Air pressure (operation)	86 kPa ... 108 kPa (up to 1500 m above sea level)
Air pressure (storage/transport)	66 kPa ... 108 kPa (up to 3500 m above sea level)

## Approvals

# FL SWITCH SFN 14TX/2FX - Industrial Ethernet Switch



2891935

<https://www.phoenixcontact.com/us/products/2891935>

## Conformity/Approvals

UL, USA / Canada	Class I, Div. 2, Groups A, B, C, D
------------------	------------------------------------

## EMC data

Conformance with EMC directives	IEC 61000-6-2
Noise immunity	EN 61000-6-2
Electromagnetic compatibility	Conformance with EMC Directive 2004/108/EC
Noise emission	EN 61000-6-4

## System properties

### Functionality

Basic functions	Unmanaged switch / auto negotiation, complies with IEEE 802.3, store-and-forward switching mode, includes alarm contacts
-----------------	--

## Signaling

Status display	LEDs: U <sub>S1</sub> , U <sub>S2</sub> (redundant voltage supply), link and activity per port
----------------	--

# FL SWITCH SFN 14TX/2FX - Industrial Ethernet Switch



2891935

<https://www.phoenixcontact.com/us/products/2891935>

## Approvals

To download certificates, visit the product detail page: <https://www.phoenixcontact.com/us/products/2891935>



**EAC**

Approval ID: RU\*-DE.\*.B.00741/19



**UL Listed**

Approval ID: FILE E 140324



**cUL Listed**

Approval ID: FILE E 140324



**KC**

Approval ID: KCC-REI-PCK-FL289193



**cUL Listed**

Approval ID: E238705-05262017



**UL Listed**

Approval ID: E238705-05262017



**cUL Listed**

Approval ID: FILE E 238705



**UL Listed**

Approval ID: FILE E 238705



**cUL Listed**

Approval ID: FILE E 199827



**UL Listed**

Approval ID: FILE E 199827

**cULus Listed**

# FL SWITCH SFN 14TX/2FX - Industrial Ethernet Switch



2891935

<https://www.phoenixcontact.com/us/products/2891935>

## Classifications

### ECLASS

ECLASS-11.0

19170402

### ETIM

ETIM 9.0

EC000734

### UNSPSC

UNSPSC 21.0

43222600

# FL SWITCH SFN 14TX/2FX - Industrial Ethernet Switch



2891935

<https://www.phoenixcontact.com/us/products/2891935>

## Environmental product compliance

REACH SVHC	Lead 7439-92-1
China RoHS	Environmentally Friendly Use Period = 10;
	For information on hazardous substances, refer to the manufacturer's declaration available under "Downloads"

# FL SWITCH SFN 14TX/2FX - Industrial Ethernet Switch



2891935

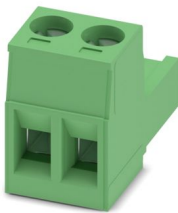
<https://www.phoenixcontact.com/us/products/2891935>

## Accessories

### MSTB 2,5/ 2-ST - PCB connector

1754449

<https://www.phoenixcontact.com/us/products/1754449>



PCB connector, nominal cross section: 2.5 mm<sup>2</sup>, color: green, nominal current: 12 A, rated voltage (III/2): 320 V, contact surface: Tin, contact connection type: Socket, number of potentials: 2, number of rows: 1, number of positions: 2, number of connections: 2, product range: MSTB 2,5/...-ST, pitch: 5 mm, connection method: Screw connection with tension sleeve, screw head form: L Slotted, conductor/PCB connection direction: 0 °, locking clip: - Locking clip, plug-in system: COMBICON MSTB 2,5, locking: without, mounting: without, type of packaging: packed in cardboard

---

### DT-LAN-CAT.6+ - Surge protection device

2881007

<https://www.phoenixcontact.com/us/products/2881007>



Surge protection in accordance with Class E<sub>A</sub> (CAT6<sub>A</sub>), for Gigabit Ethernet (up to 10 Gbps), token ring, FDDI/CDDI, ISDN, and DS1. Suitable for Power over Ethernet (PoE++ / 4PPoE) "Mode A" and "Mode B". RJ45 attachment plug with separate grounding cable and ground connection snap-on foot for NS 35 DIN rails.



# FL SWITCH SFN 14TX/2FX - Industrial Ethernet Switch



2891935

<https://www.phoenixcontact.com/us/products/2891935>

## FL SEC PAC 4TX - Port Guard Security Element

2832865

<https://www.phoenixcontact.com/us/products/2832865>

Layer1 security elements for 4 RJ45 network connections for use with patch boxes and panels



---

## FL DIN RA - DIN rail adapter

2891053

<https://www.phoenixcontact.com/us/products/2891053>

The FL DIN RA is installed in a standard, 19-inch rack (EIA-310-D, IEC 60297-3-100) to allow DIN rail mounted equipment to be rack mounted.



# FL SWITCH SFN 14TX/2FX - Industrial Ethernet Switch



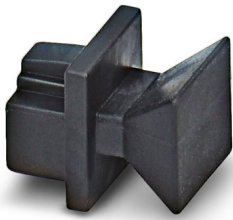
2891935

<https://www.phoenixcontact.com/us/products/2891935>

## FL RJ45 PROTECT CAP - Dust protection

2832991

<https://www.phoenixcontact.com/us/products/2832991>



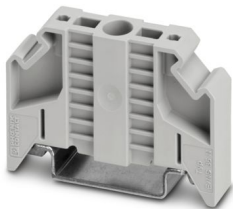
Dust protection caps for RJ45 socket

---

## E/NS 35 N - End bracket

0800886

<https://www.phoenixcontact.com/us/products/0800886>



End clamp, width: 9.5 mm, color: gray

# FL SWITCH SFN 14TX/2FX - Industrial Ethernet Switch

2891935

<https://www.phoenixcontact.com/us/products/2891935>

## FL CAT5 PATCH 0,5 - Patch cable

2832263

<https://www.phoenixcontact.com/us/products/2832263>

Patch cable, CAT5, assembled, 0.5 m



---

## FL CAT5 PATCH 1,0 - Patch cable

2832276

<https://www.phoenixcontact.com/us/products/2832276>

Patch cable, CAT5, assembled, 1 m



# FL SWITCH SFN 14TX/2FX - Industrial Ethernet Switch



2891935

<https://www.phoenixcontact.com/us/products/2891935>

## FL CAT5 PATCH 2,0 - Patch cable

2832289

<https://www.phoenixcontact.com/us/products/2832289>

Patch cable, CAT5, assembled, 2 m



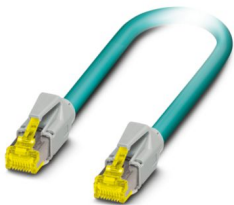
---

## NBC-R4AC-R4AC-IE8A/.../... - Patch cable

1411854

<https://www.phoenixcontact.com/us/products/1411854>

Patch cable, degree of protection: IP20, number of positions: 8, 10 Gbps, CAT6<sub>A</sub>, cable outlet: straight, Ethernet



# FL SWITCH SFN 14TX/2FX - Industrial Ethernet Switch



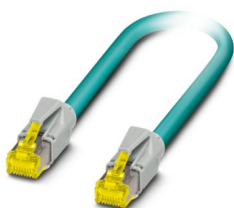
2891935

<https://www.phoenixcontact.com/us/products/2891935>

## NBC-R4AC/10G-R4AC/10G-94F/2,0 - Patch cable

1408360

<https://www.phoenixcontact.com/us/products/1408360>



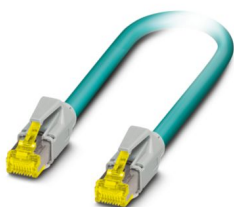
Patch cable, CAT6<sub>A</sub>, 4-pair, shielded, connection not crossed (line), assembled at both ends with RJ45/IP20 connectors, outer sheath material: PUR, length: 2.0 m

---

## NBC-R4AC/10G-R4AC/10G-94F/3,0 - Patch cable

1408365

<https://www.phoenixcontact.com/us/products/1408365>



Patch cable, CAT6<sub>A</sub>, 4-pair, shielded, connection not crossed (line), assembled at both ends with RJ45/IP20 connectors, outer sheath material: PUR, length: 3.0 m

# FL SWITCH SFN 14TX/2FX - Industrial Ethernet Switch



2891935

<https://www.phoenixcontact.com/us/products/2891935>

## NBC-R4AC/1,0-93B/R4AC - Patch cable

1408968

<https://www.phoenixcontact.com/us/products/1408968>



Patch cable, degree of protection: IP20, cable length: 1 m, number of positions: 4, 100 Mbps, CAT5, material: PA 6.6, PROFINET

---

## NBC-R4AC/2,0-93B/R4AC - Patch cable

1408969

<https://www.phoenixcontact.com/us/products/1408969>



Patch cable, degree of protection: IP20, cable length: 2 m, number of positions: 4, 100 Mbps, CAT5, material: PA 6.6, PROFINET

# FL SWITCH SFN 14TX/2FX - Industrial Ethernet Switch



2891935

<https://www.phoenixcontact.com/us/products/2891935>

## NBC-R4AC/5,0-93B/R4AC - Patch cable

1408970

<https://www.phoenixcontact.com/us/products/1408970>



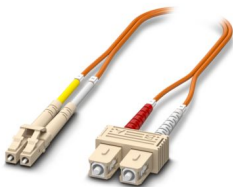
Patch cable, degree of protection: IP20, cable length: 5 m, number of positions: 4, 100 Mbps, CAT5, material: PA 6.6, PROFINET

---

## FOC-LC:PA-SC:PA-OM2:D01/1 - FO patch cable

1115607

<https://www.phoenixcontact.com/us/products/1115607>



Multi-mode OM2 duplex jumper, LC-SC, UPC polishing, length 1 m

# FL SWITCH SFN 14TX/2FX - Industrial Ethernet Switch



2891935

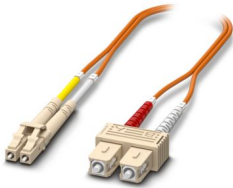
<https://www.phoenixcontact.com/us/products/2891935>

## FOC-LC:PA-SC:PA-OM2:D01/2 - FO patch cable

1115605

<https://www.phoenixcontact.com/us/products/1115605>

Multi-mode OM2 duplex jumper, LC-SC, UPC polishing, length 2 m



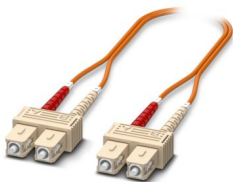
---

## FOC-SC:PA-SC:PA-OM2:D01/1 - FO patch cable

1115536

<https://www.phoenixcontact.com/us/products/1115536>

Multi-mode OM2 duplex jumper, SC-SC, UPC polishing, length 1 m





# FL SWITCH SFN 14TX/2FX - Industrial Ethernet Switch



2891935

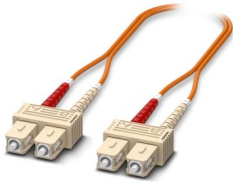
<https://www.phoenixcontact.com/us/products/2891935>

FOC-SC:PA-SC:PA-OM2:D01/2 - FO patch cable

1115535

<https://www.phoenixcontact.com/us/products/1115535>

Multi-mode OM2 duplex jumper, SC-SC, UPC polishing, length 2 m



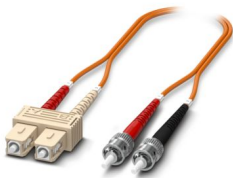
---

FOC-ST:PA-SC:PA-OM2:D01/1 - FO patch cable

1115574

<https://www.phoenixcontact.com/us/products/1115574>

Multi-mode OM2 duplex jumper, ST-SC, UPC polishing, length 1 m



# FL SWITCH SFN 14TX/2FX - Industrial Ethernet Switch



2891935

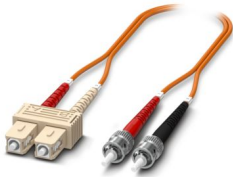
<https://www.phoenixcontact.com/us/products/2891935>

FOC-ST:PA-SC:PA-OM2:D01/2 - FO patch cable

1115573

<https://www.phoenixcontact.com/us/products/1115573>

Multi-mode OM2 duplex jumper, ST-SC, UPC polishing, length 2 m



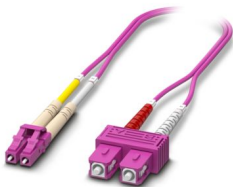
---

FOC-LC:PA-SC:PA-OM4:D01/1 - FO patch cable

1115601

<https://www.phoenixcontact.com/us/products/1115601>

Multi-mode OM4 duplex jumper, LC-SC, UPC polishing, length 1 m



# FL SWITCH SFN 14TX/2FX - Industrial Ethernet Switch



2891935

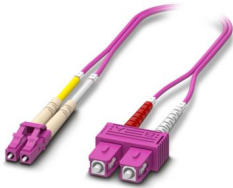
<https://www.phoenixcontact.com/us/products/2891935>

FOC-LC:PA-SC:PA-OM4:D01/2 - FO patch cable

1115600

<https://www.phoenixcontact.com/us/products/1115600>

Multi-mode OM4 duplex jumper, LC-SC, UPC polishing, length 2 m



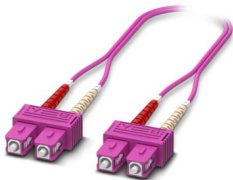
---

FOC-SC:PA-SC:PA-OM4:D01/1 - FO patch cable

1115424

<https://www.phoenixcontact.com/us/products/1115424>

Multi-mode OM4 duplex jumper, SC-SC, UPC polishing, length 1 m



# FL SWITCH SFN 14TX/2FX - Industrial Ethernet Switch



2891935

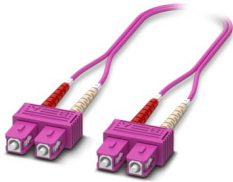
<https://www.phoenixcontact.com/us/products/2891935>

FOC-SC:PA-SC:PA-OM4:D01/2 - FO patch cable

1115423

<https://www.phoenixcontact.com/us/products/1115423>

Multi-mode OM4 duplex jumper, SC-SC, UPC polishing, length 2 m



---

Phoenix Contact 2024 © - all rights reserved

<https://www.phoenixcontact.com>

Phoenix Contact USA  
586 Fulling Mill Road  
Middletown, PA 17057, United States  
(+717) 944-1300  
[info@phoenixcon.com](mailto:info@phoenixcon.com)