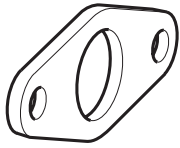


## Cylinder mountings

Type	Description	Cyl. bore Ø mm	Weight kg	Order code
------	-------------	-------------------	--------------	------------

### Flange-MF8



Intended for fixed attachment of the cylinder. The flange is designed for mounting on the front or rear end-covers.

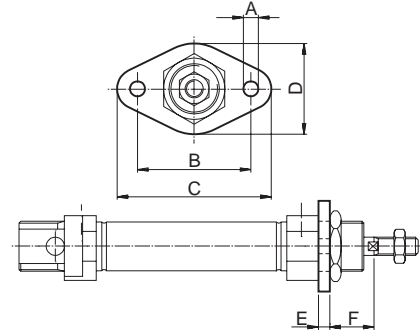
Material:  
Surface-treated steel

10  
12-16  
20-25

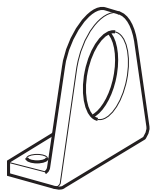
0,012  
0,025  
0,045

**P1A-4CMB**  
**P1A-4DMB**  
**P1A-4HMB**

Cylinder Ø mm	A mm	B mm	C mm	D mm	E mm	F mm
10	4,5	30	40	22	3	13
12-16	5,5	40	52	30	4	18
20	6,6	50	66	40	5	19
25	6,6	50	66	40	5	23



### Foot-MS3



Intended for fixed attachment of the cylinder. The bracket is designed for mounting on the front or rear end-covers.

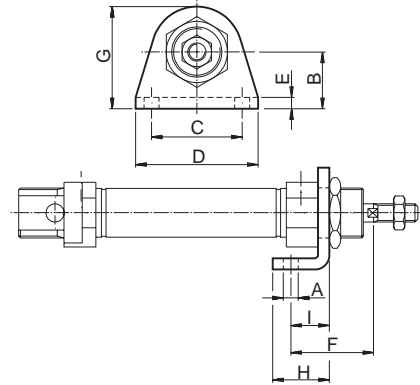
Material:  
Surface-treated steel

10  
12-16  
20-25

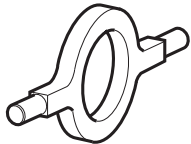
0,020  
0,040  
0,080

**P1A-4CMF**  
**P1A-4DMF**  
**P1A-4HMF**

Cylinder Ø mm	A mm	B mm	C mm	D mm	E mm	F mm	G mm	H mm	I mm
10	4,5	16	25	35	3	24	26	16	11
12-16	5,5	20	32	42	4	32	32,5	20	14
20	6,5	25	40	54	5	36	45	25	17
25	6,5	25	40	54	5	40	45	25	17



### Cover trunnion



Intended for articulated mounting of the cylinder. The flange is designed for mounting on the front or rear end-covers.

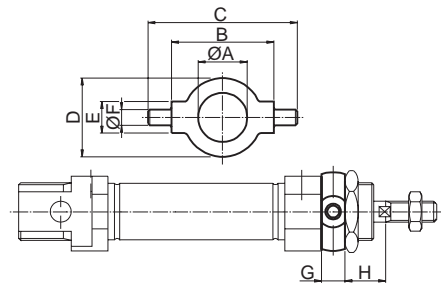
Material:  
Stainless steel, DIN X 10 CrNiS 18 9

10  
12-16  
20-25

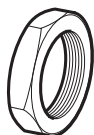
0,014  
0,033  
0,037

**P1A-4CMJ**  
**P1A-4DMJ**  
**P1A-4HMJ**

Cylinder Ø mm	A mm	B h14 mm	C mm	D mm	E e9 mm	F mm	G mm	H mm
10	12,5	26	38	20	8	4	6	10
12-16	16,5	38	58	25	10	6	8	14
20	22,5	46	66	30	10	6	8	16
25	22,5	46	66	30	10	6	8	20



### Mounting nut



Intended for fixed mounting of the cylinder. Cylinders are supplied complete with one mounting nut.

Material:  
Galvanized steel

10  
12-16  
20-25

0,009  
0,018  
0,042

**9127385101**  
**9127385102**  
**9127385103**

Cylinder Ø mm	A mm	B mm	C
10	16	3	M12x1,25
12-16	20	4	M16x1,50
20-25	27	5	M22x1,50

