

# PT 2XEX(I)-BE - Surge protection base-element

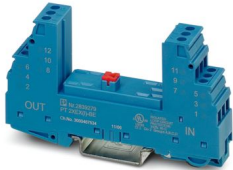


2839279

<https://www.phoenixcontact.com/us/products/2839279>

Please be informed that the data shown in this PDF document is generated from our online catalog. Please find the complete data in the user documentation. Our general terms of use for downloads are valid.

Base element for protective plug PT with protective circuit for two 2-core floating EEx ia signal circuits. Mounting on NS 35/7.5 and NS 35/15, housing width: 17.5 mm



## Your advantages

- Maximum ease of maintenance, thanks to the 2-piece design
- Easy selection for all possible demands in MCR applications with a complete product portfolio
- The signal is not influenced during maintenance work, thanks to the impedance-neutral insertion and removal of protective plugs

## Commercial data

Item number	2839279
Packing unit	10 pc
Minimum order quantity	10 pc
Sales key	CL21
Product key	CL2113
Catalog page	Page 156 (C-4-2019)
GTIN	4017918182885
Weight per piece (including packing)	75.61 g
Weight per piece (excluding packing)	62.43 g
Customs tariff number	85363010
Country of origin	DE

# PT 2XEX(I)-BE - Surge protection base-element



2839279

<https://www.phoenixcontact.com/us/products/2839279>

## Technical data

### Product properties

Type	Base element, DIN rail mounting
Product type	Base element
Product family	PLUGTRAB PT
Number of positions	4
Wire pairs per module	2

### Insulation characteristics

Overvoltage category	III
Pollution degree	2

### Electrical properties

Nominal voltage $U_N$	24 V DC
-----------------------	---------

### Connection data

Connection method	Screw connection
Screw thread	M3
Tightening torque	0.5 Nm
Conductor cross section flexible	0.2 mm <sup>2</sup> ... 2.5 mm <sup>2</sup>
Conductor cross section rigid	0.2 mm <sup>2</sup> ... 4 mm <sup>2</sup>
Conductor cross section AWG	24 ... 12

### Ex data

Maximum inner capacitance $C_i$	1.3 nF
Max. internal inductance $L_i$	1 μH
Max. input current $I_i$	325 mA (T4 / ≤ 80 °C)
	325 mA (T5 / ≤ 55 °C)
	325 mA (T6 / ≤ 40 °C)
Max. input voltage $U_i$	30 V DC
max. input power $P_i$	3.00 W
Maximum inner time factor ( $R_i/L_i$ )	≤ 0.2 μs
Ambient temperature (operation)	-40 °C ... 80 °C (T4)
	-40 °C ... 55 °C (T5)
	-40 °C ... 40 °C (T6)

### Dimensions

Dimensional drawing	
Width	17.7 mm
Height	90 mm

# PT 2XEX(I)-BE - Surge protection base-element



2839279

<https://www.phoenixcontact.com/us/products/2839279>

Depth	51.5 mm (incl. DIN rail 7.5 mm)
Horizontal pitch	1 Div.

## Material specifications

Color	blue (RAL 5015) Copper
Flammability rating according to UL 94	V-0
Housing material	PA 6.6

## Mechanical properties

### Mechanical data

Open side panel	No
-----------------	----

## Protective circuit

Maximum continuous voltage $U_C$	30 V DC 21 V AC
Rated current	325 mA ( $\leq 40$ °C)
Resistance per path	2.2 $\Omega$ $\pm 10$ %
Surge protection fault message	none
Max. required back-up fuse	315 mA (T)

## Environmental and real-life conditions

### Ambient conditions

Degree of protection	IP20
Ambient temperature (operation)	-40 °C ... 85 °C
Ambient temperature (storage/transport)	-40 °C ... 85 °C
Altitude	$\leq 2000$ m (amsl)

## Approvals

### Conformity/Approvals

ATEX	II 1 G Ex ia IIC T4...T6 II 1 D Ex iaD 20 IP6x T85 °C...135 °C
------	---

## Standards and regulations

Standards/specifications	EN 61643-21
Note	A2:2013
Standards/specifications	EN 60079-0
Note	2018
Standards/specifications	EN 60079-11
Note	2012
Standards/specifications	IEC 60079-0
Note	2017
Standards/specifications	IEC 60079-11

# PT 2XEX(I)-BE - Surge protection base-element



2839279

<https://www.phoenixcontact.com/us/products/2839279>

Note	2011
------	------

## Mounting

Mounting type	DIN rail: 35 mm
---------------	-----------------

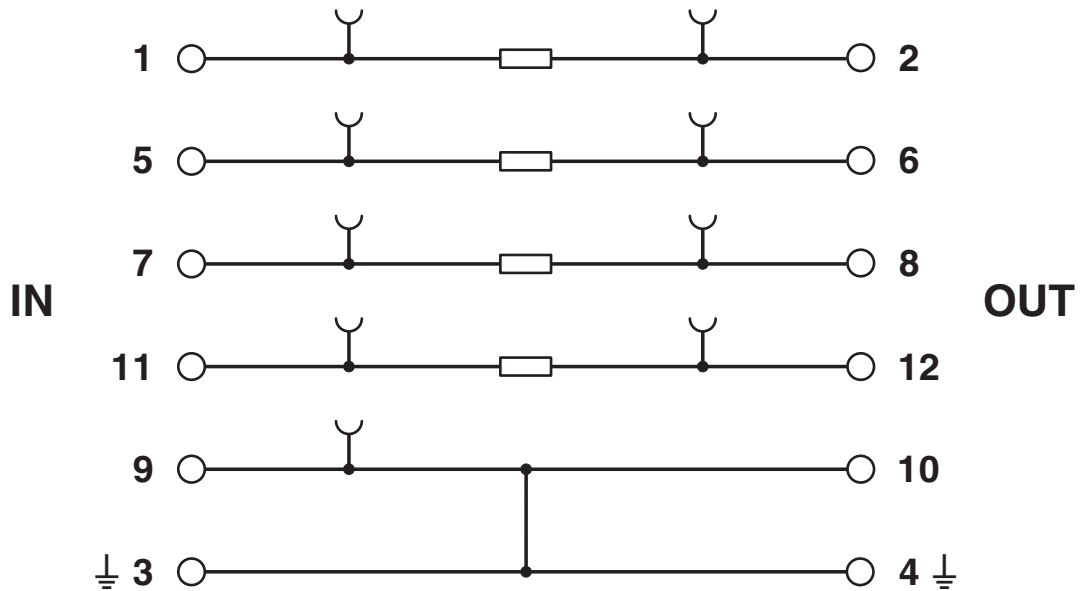
# PT 2XEX(I)-BE - Surge protection base-element

2839279

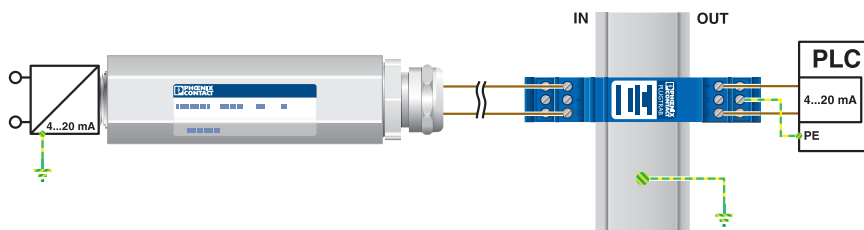
<https://www.phoenixcontact.com/us/products/2839279>

## Drawings

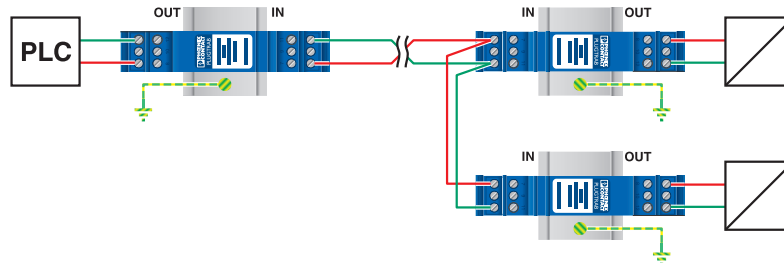
Circuit diagram



Application drawing



Application drawing

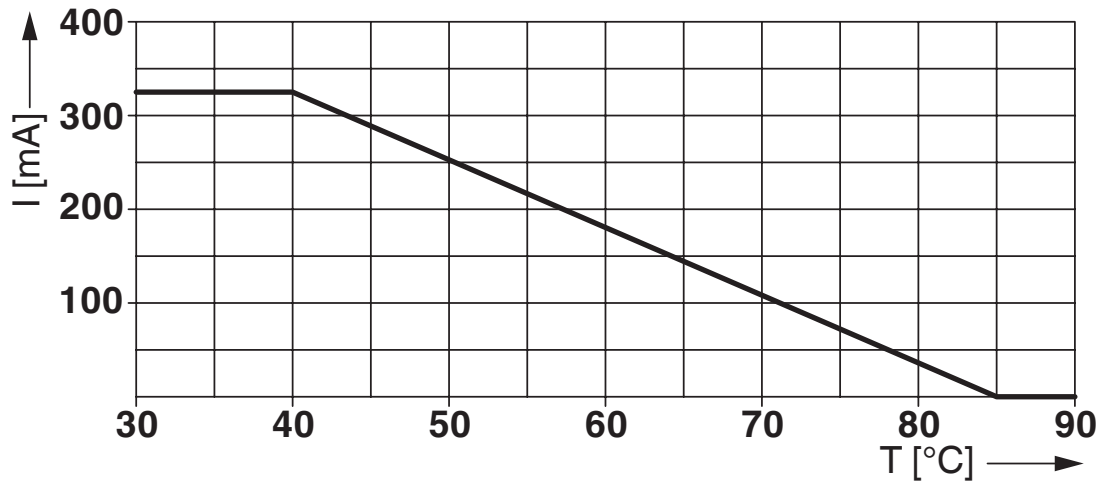


# PT 2XEX(I)-BE - Surge protection base-element

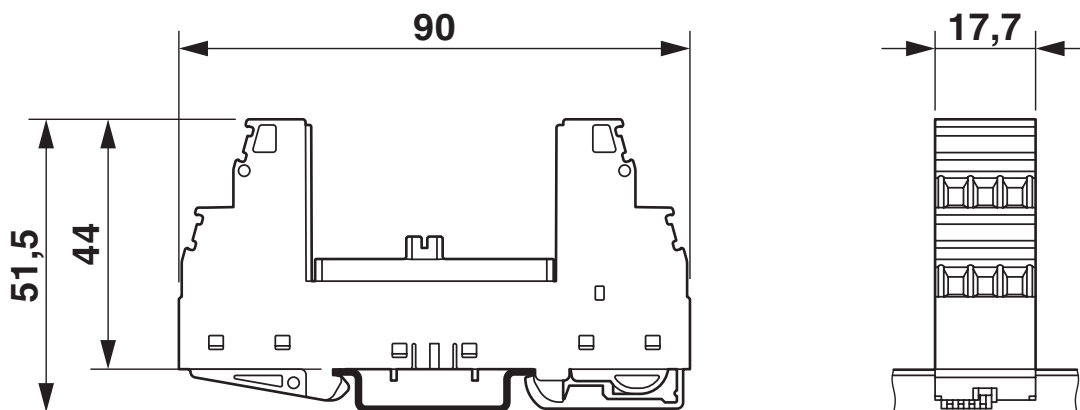
2839279

<https://www.phoenixcontact.com/us/products/2839279>

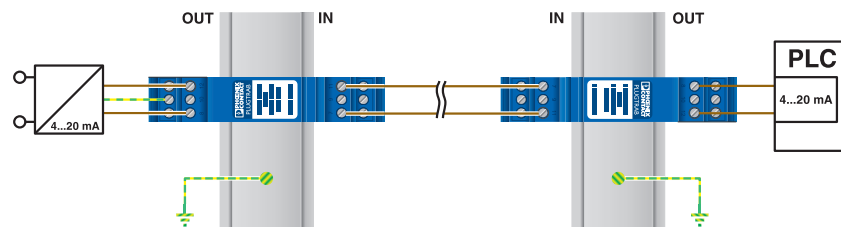
Diagram



Dimensional drawing



Application drawing



# PT 2XEX(I)-BE - Surge protection base-element



2839279

<https://www.phoenixcontact.com/us/products/2839279>

## Approvals

To download certificates, visit the product detail page: <https://www.phoenixcontact.com/us/products/2839279>



**EAC**

Approval ID: EAC-Zulassung



**DNV GL**

Approval ID: TAE00001N6



**EAC**

Approval ID: RU C-DE.\*09.B.00169



**UL Listed**

Approval ID: FILE E 138168



**ATEX**

Approval ID: KEMA 00ATEX1099 X



**IECEX**

Approval ID: IECEX KEM 10.0063X



**CCC**

Approval ID: 2020322316001009



**cUL Listed**

Approval ID: FILE E 333250



**UL Listed**

Approval ID: FILE E 333250

**INMETRO**

Approval ID: DNV 19.0031 X



**NEPSI-EX**

Approval ID: GYJ20.1177X

# PT 2XEX(I)-BE - Surge protection base-element



2839279

<https://www.phoenixcontact.com/us/products/2839279>



**CCC**

Approval ID: 2020322316001009



**UKCA-EX**

Approval ID: DEKRA 21UKEX0234 X

**cULus Listed**



# PT 2XEX(I)-BE - Surge protection base-element



2839279

<https://www.phoenixcontact.com/us/products/2839279>

## Classifications

### ECLASS

ECLASS-11.0	27130803
ECLASS-13.0	27171592

### ETIM

ETIM 9.0	EC002497
----------	----------

### UNSPSC

UNSPSC 21.0	39121600
-------------	----------

# PT 2XEX(I)-BE - Surge protection base-element



2839279

<https://www.phoenixcontact.com/us/products/2839279>

## Environmental product compliance

China RoHS	Environmentally friendly use period: unlimited = EFUP-e
	No hazardous substances above threshold values

# PT 2XEX(I)-BE - Surge protection base-element



2839279

<https://www.phoenixcontact.com/us/products/2839279>

## Accessories

### SSA 5-10 - Shield connection

2839512

<https://www.phoenixcontact.com/us/products/2839512>



Shield fast connection for 5 ... 10 mm cable diameter. Potential connecting cable:  
200 mm, 1 mm<sup>2</sup>, color: black

---

### SSA 3-6 - Shield connection

2839295

<https://www.phoenixcontact.com/us/products/2839295>



Shield fast connection for 3 ... 6 mm cable diameter. Potential connecting cable:  
200 mm, 1 mm<sup>2</sup>, color: black

# PT 2XEX(I)-BE - Surge protection base-element



2839279

<https://www.phoenixcontact.com/us/products/2839279>

## ZB 5 :UNBEDRUCKT - Zack marker strip

1050004

<https://www.phoenixcontact.com/us/products/1050004>



Zack marker strip, Strip, white, unlabeled, can be labeled with: PLOTMARK, CMS-P1-PLOTTER, mounting type: snapped, for terminal block width: 5.2 mm, lettering field size: 5.1 x 10.5 mm, Number of individual labels: 10

---

## ZBF 5:UNBEDRUCKT - Zack Marker strip, flat

0808642

<https://www.phoenixcontact.com/us/products/0808642>



Zack Marker strip, flat, Strip, white, unlabeled, can be labeled with: PLOTMARK, CMS-P1-PLOTTER, mounting type: snapped, for terminal block width: 5 mm, lettering field size: 5.1 x 5.2 mm, Number of individual labels: 10

# PT 2XEX(I)-BE - Surge protection base-element



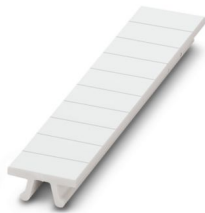
2839279

<https://www.phoenixcontact.com/us/products/2839279>

## ZB 5,8:UNBEDRUCKT - Zack marker strip

2715209

<https://www.phoenixcontact.com/us/products/2715209>



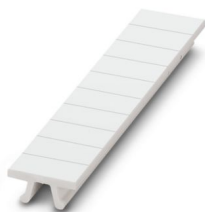
Zack marker strip, Strip, white, unlabeled, can be labeled with: PLOTMARK, CMS-P1-PLOTTER, mounting type: snapped, for terminal block width: 5.8 mm, lettering field size: 5.75 x 10.5 mm, Number of individual labels: 10

---

## ZB 5,8 CUS - Zack marker strip

0824965

<https://www.phoenixcontact.com/us/products/0824965>



Zack marker strip, can be ordered: Strip, white, labeled according to customer specifications, mounting type: snap into tall marker groove, for terminal block width: 5.8 mm, lettering field size: 5.75 x 10.5 mm, Number of individual labels: 10

## PT 2XEX(I)-BE - Surge protection base-element

2839279

<https://www.phoenixcontact.com/us/products/2839279>



## PT 2XEX(I)-24DC-ST - Surge protection plug

2838225

<https://www.phoenixcontact.com/us/products/2838225>



PT protective plug with protective circuit for two 2-wire floating Ex i signal circuits. Nominal voltage: 24 V DC, HART-compatible.

---

## X-PEN 0,35 - Marker pen

0811228

<https://www.phoenixcontact.com/us/products/0811228>



Marker pen without ink cartridge, for manual labeling of markers, labeling extremely wipe-proof, line thickness 0.35 mm

# PT 2XEX(I)-BE - Surge protection base-element



2839279

<https://www.phoenixcontact.com/us/products/2839279>

## B-STIFT - Marker pen

1051993

<https://www.phoenixcontact.com/us/products/1051993>



Marker pen, for manual labeling of unprinted Zack strips, smear-proof and waterproof, line thickness 0.5 mm

---

## SZS 0,6X3,5 VDE - Screwdriver

1212602

<https://www.phoenixcontact.com/us/products/1212602>



Screwdriver, slot-headed, VDE insulated, size: 0.6 x 3.5 x 100 mm, 2-component grip, with non-slip grip

---

Phoenix Contact 2024 © - all rights reserved  
<https://www.phoenixcontact.com>

Phoenix Contact USA  
586 Fulling Mill Road  
Middletown, PA 17057, United States  
(+717) 944-1300  
[info@phoenixcon.com](mailto:info@phoenixcon.com)