

Bocube

Enclosures, ABS, single-coloured



B 233012 ABS 7024
Order no.: 96038564

* = Available on request.

Characteristics

Colour of enclosure group
Graphite grey, similar to RAL 7024

Colour of enclosure group
Graphite grey

Protection class
IP 66, 68 - 1,2m (2 hours)

Enclosure Material

ABS or PC UL 94 V0 (material is suitable for outdoor use; f1-listing according to UL 746C)

PU seal, foamed; for details please see Technical Information

Scope of delivery

Lid and base, hinged quick-release catches

Note

Material shrinkage may result in ABS enclosures being approx. 0.1 - 0.25 % larger.

Important!

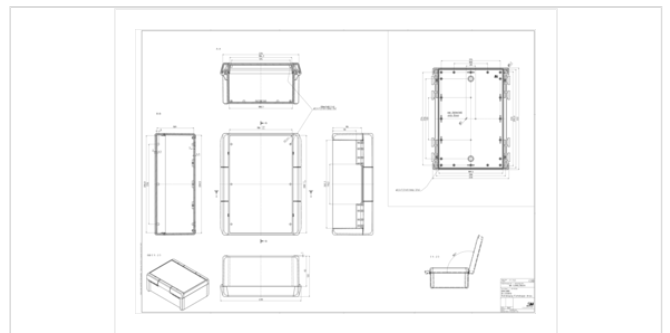
To compensate for pressure when temperatures change and cause moisture in the enclosure, we recommend that you use a pressure compensation element.

» Additional information

Dimensions

Dimensions
239 x 300 x 120 mm

Product drawing



Technical documentation / Downloads

Technical drawings

3D product data in STEP format: 96038564 B-233012-ABS-7024.stp (21.3 MB)

Drawing for mechanical processing: 96038564 B-233012-ABS-7024-G.dxf (4.2 MB)

Milling contours are shown here as a DXF file. (Sub D, USB, HDMI, cable glands, ...)

Product drawing in PDF format: 96038564 B-233012-ABS-7024.pdf (255.8 KB)

Product drawing in DXF format: 96038564 B-233012-ABS-7024.dxf (4.1 MB)

Product information

Bocube GB.pdf (1.9 MB)

Highlights Bocube.pdf (3.8 MB)

Works Test Certificates

688 WPZ-Bocube-PC-V0 DE.pdf (184.6 KB)

689 WPZ-Bocube-ABS DE.pdf (165.1 KB)

689 WPZ-Bocube-ABS EN.pdf (160.3 KB)

688 WPZ-Bocube-PC-V0 EN.pdf (179.1 KB)

Matching accessories



Hinged quick-release catches (Set), polycarbonate UL 94 V0 or ABS

96330005	B SC ABS 7035	For B 233012, B 273612	Light grey
96330004	B SC ABS 7024	For B 233012, B 273612	Graphite grey
96330009	B SC ABS 6029	For B 233012, B 273612	Mint green
96330002	B SC ABS 5002	For B 233012, B 273612	Ultramarine blue
96330000	B SC ABS 3000	For B 233012, B 273612	Flame red
96330003	B SC ABS 1023	For B 233012, B 273612	Traffic yellow



Hand-operated hinged catch (set), polycarbonate UL 94 V0 or ABS

96930002	B SC HB ABS 5002	For B 233012, B 273612	Ultramarine blue
96930000	B SC HB ABS 3000	For B 233012, B 273612	Flame red
96930009	B SC HB ABS 6029	For B 233012, B 273612	Mint green
96930004*	B SC HB ABS 7024	For B 233012, B 273612	Graphite grey
*			
96930005*	B SC HB ABS 7035	For B 233012, B 273612	Light grey
*			
96930003	B SC HB ABS 1023	For B 233012, B 273612	Traffic yellow



Wall brackets

96510604	B WL-2 7024	For B 2330.., B 2736..	Graphite grey
----------	-------------	------------------------	---------------



Mounting panels, laminated paper, 2 mm

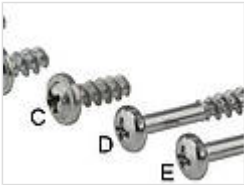
96608500	B M 2330	For B 2330..	
----------	----------	--------------	--



Front panels, 2 mm, natural-coloured anodised aluminium

96708500 B FP 2330

For B 2330.., front panel thickness 2.5 mm



Sets of screws

96300002 B SHR-2

E (for optional screwing of enclosures B 2330, B 2736)



Distance bolts

96774000 DIBLZ AK 30x7/IM3/74

ND = 2,4 - 2,6, for B 233012, B 273612 if a mounting plate is used

96776000 DIBLZ AK 30x5/IM3/76

ND = 2,4 - 2,6, for B 233012, B 273612



DIN rails DIN EN 60715 TH 15, galvanised steel

22152851 TS 15

For B 2330..

22151851 TS 15

For BCD 160, 165 terminal compartment up, B 2330.. (crosswise)



DIN rails DIN EN 60715 G 32, galvanised steel

22322851 TS 32

For B 2330..

22321851 TS 32

For B 2330.. (crosswise)



DIN rails DIN EN 60715 TH 35, galvanised steel

22352851 TS 35

For B 2330..

22351851 TS 35

For B 2330.. (crosswise)



Pressure compensation membrane DAE

52011000 DAE-D11

Self-adhesive membrane \varnothing 11 mm