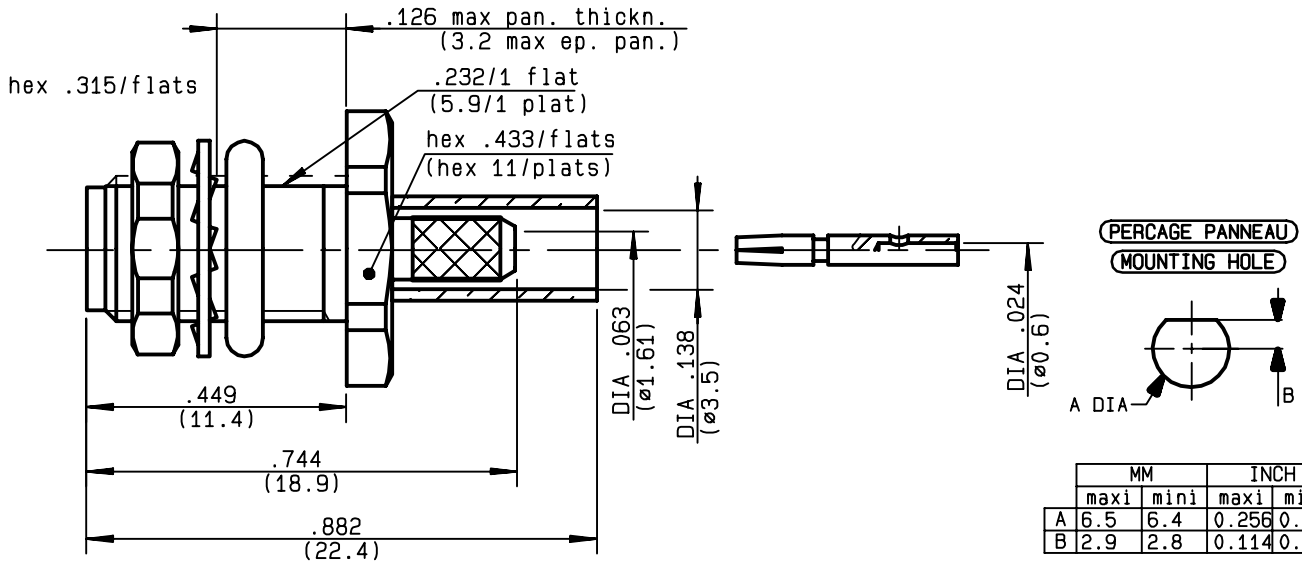


**STRAIGHT BULKHEAD JACK PANEL SEAL
CRIMP TYPE - CABLE 2.6/50 D**

R125.322.030
SERIES SMA



MM		INCH	
maxi	mini	maxi	mini
A 6.5	6.4	0.256	0.25
B 2.9	2.8	0.114	0.11

NOMINAL IMPEDANCE	50 Ω
FREQUENCY RANGE	0-12.4 GHz
TEMPERATURE RATING	-65/+165 °C
V.S.W.R	1.15 + .02 x F(GHz)Maxi
RF INSERTION LOSS	0.06 √F(GHz) dB Maxi
VOLTAGE RATING	250 Veff Maxi
DIELECTRIC WITHSTANDING VOLTAGE	750 Veff Mini
INSULATION RESISTANCE	5000 MΩMini
HERMETIC SEAL	NA Atm.cm ³ /s
LEAKAGE (pressurized only)	NA
MECHANICAL DURABILITY	500 Cycles
WEIGHT	3.77 gr
SPECIFICATION	

CABLES : K02252D RD 316	
OTHERS CHARACTERISTICS	
CABLE RETENTION	110 N Mini
CENTER CONTACT RETENTION	
Axial force - mating end	15 N Mini
Axial force - opposite end	15 N Mini
Torque	NA cm.N Mini
RECOMMENDED TORQUES	
Mating	NA cm.N
Panel nut	150 cm.N
Clamp nut	NA cm.N

CONNECTOR PARTS:	MATERIALS	FINISH	(all values are given in micrometers)
BODY	STAINLESS STEEL	GOLD 0.8 OVER NICKEL 2	
OUTER CONTACT			
CENTER CONTACT	BERYLLIUM COPPER	GOLD 1.3 OVER NICKEL 2	
INSULATOR	PTFE	-	
GASKET	SILICONE RUBBER	-	
OTHERS PIECES	STAINLESS STEEL	GOLD 0.8 OVER NICKEL 2	

ISSUE	CREATION DATE	FILE PART-NUMBER
9840C00	13/07/1994	92-0132-795



LELEU

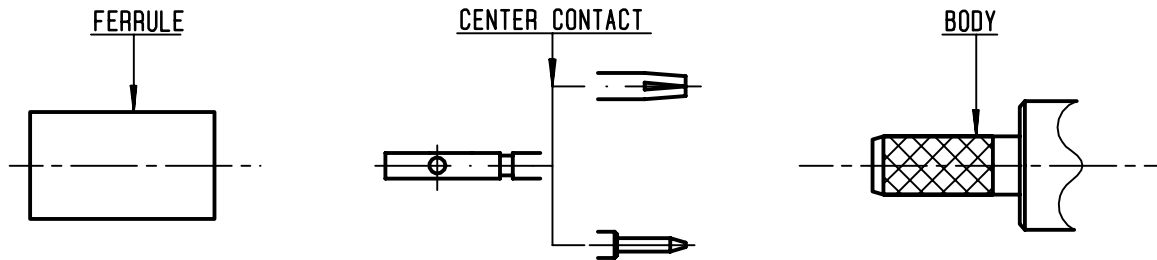
The information given here is subject to change without notice.
Design changes may be in order to improve the product .

Connect to the future



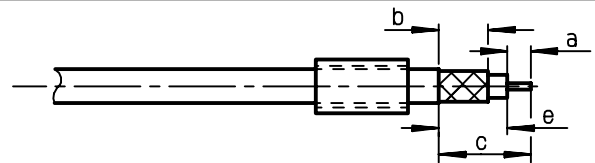
R125.322.030

ISSUE **9840C00** SERIES **SMA**



①

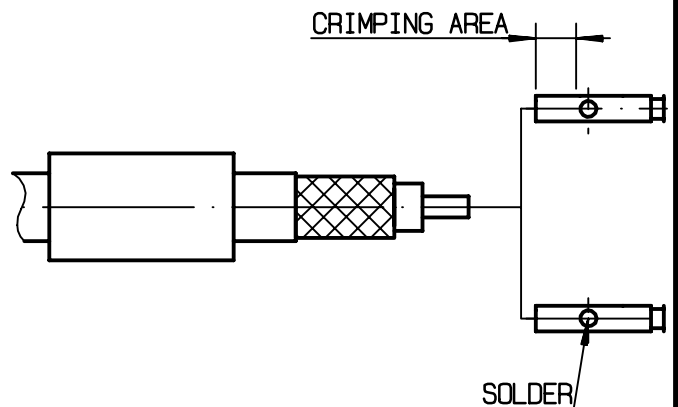
Slide onto the cable the ferrule
Strip the cable .
-
-



Stripping	a	b	c	d	e
inch	0.13	0.236	0.429	0	0.299
mm	3.3	6	10.9		7.6

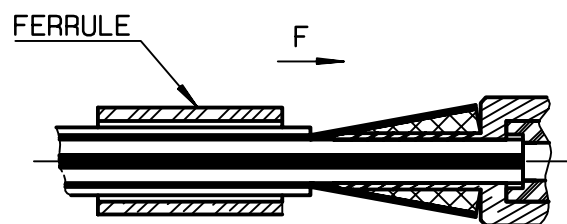
②

2-1 If crimping: Slide on the centre contact until it bottoms against cable dielectric. Crimp centre contact.
Crimping tool: R282 281 000 + positionner R282 967 012 - position 5
-
2-2 If solder: Slide the centre contact until it bottoms against cable dielectric. Solder it.



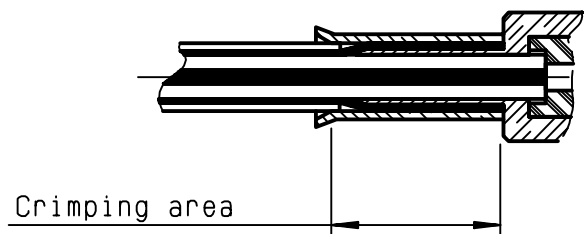
③

Fan the braid .
Slide cable into the body until it bottoms against insulator and contact snaps into insulator. Slide the ferrule over the braid. (in direction F).



④

Crimp the ferrule with crimping tool R 282 271 000 (Hex. : .151) or crimping tool R282 293 000 (M22520/5-01) + dies R282 235 037 (M22520/5-37)
Cut the excess of braid .
-
-
-
-



Mouser Electronics

Authorized Distributor

Click to View Pricing, Inventory, Delivery & Lifecycle Information:

Radial:

[R125322030](#) [R125322030W](#)