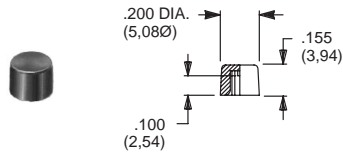


C&K Hardware

CAPS

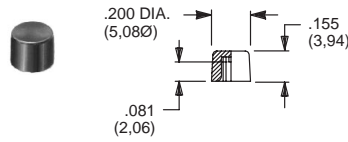
EP & TP SERIES, .100" DIA. PLUNGERS



PART NO.

508101000 WHITE
508102000 BLACK
508103000 RED

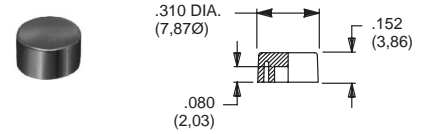
TP SERIES, .100" DIA. PLUNGERS (Recommended for S9 plunger)



PART NO.

538701000 WHITE
538702000 BLACK
538703000 RED

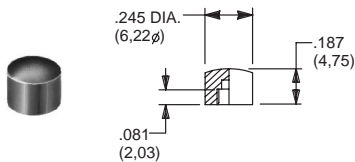
EP & TP SERIES, .100" DIA. PLUNGERS



PART NO.

465801000 WHITE
465802000 BLACK
465803000 RED

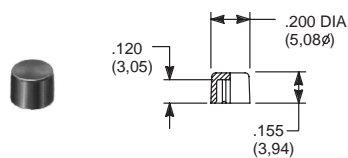
8600 & KM33 SERIES, .106" DIA. PLUNGERS



PART NO.

785101000 WHITE
785102000 BLACK
785103000 RED

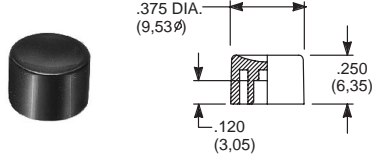
8020, 8060, E010, E020, KM11, L & TP SERIES, .122" DIA. PLUNGERS



PART NO.

708901000 WHITE
708902000 BLACK
708903000 RED

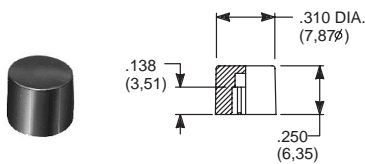
8020, 8060, E010, E020, KM11 & L SERIES, .122" DIA. PLUNGERS



PART NO.

752701000 WHITE
752702000 BLACK
752703000 RED

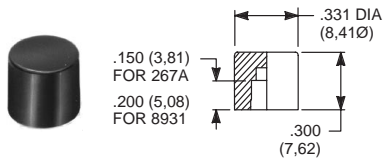
8020, 8060, E010, E020, KM11, L & TP SERIES .122" DIA. PLUNGERS



PART NO.

801801000 WHITE
801802000 BLACK
801803000 RED

.157" DIA. PLUNGERS



PART NO.

267A01000 WHITE
267A02000 BLACK
267A03000 RED

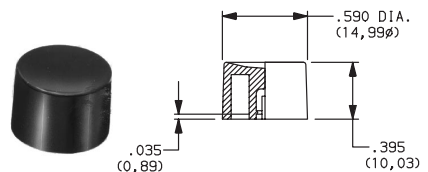
FOR SERIES
 85X2T, 8534T
 Models only

PART NO.

893101000 WHITE
893102000 BLACK
893103000 RED

FOR SERIES
 85X1T, 8532T1,
 8533T, 8534T1 Models only

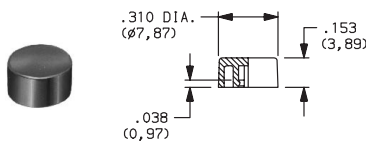
8020, 8050, E010, E020 & L SERIES, .122" DIA. SNAP-FITTING PLUNGERS



PART NO.

894001000 WHITE
894002000 BLACK
894003000 RED

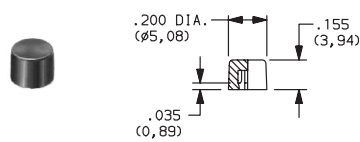
EP11 & EP12 MODELS, .100 DIA. SNAP-FITTING PLUNGERS



PART NO.

585A01000 WHITE
585A02000 BLACK
585A03000 RED

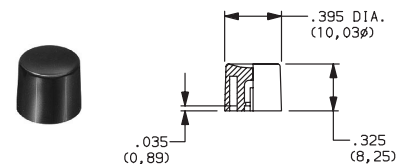
EP11 & EP12 MODELS, .100 DIA. SNAP-FITTING PLUNGERS



PART NO.

785A01000 WHITE
785A02000 BLACK
785A03000 RED

8020, 8050, E010, E020 & L SERIES, .122" DIA. SNAP-FITTING PLUNGERS



PART NO.

894101000 WHITE
894102000 BLACK
894103000 RED

MATERIAL

Nylon. Finish: Gloss.

Special colors, custom markings available, consult Customer Service Center.

