

PRODUCT DESCRIPTION CODE :

10131935-YXXXLF

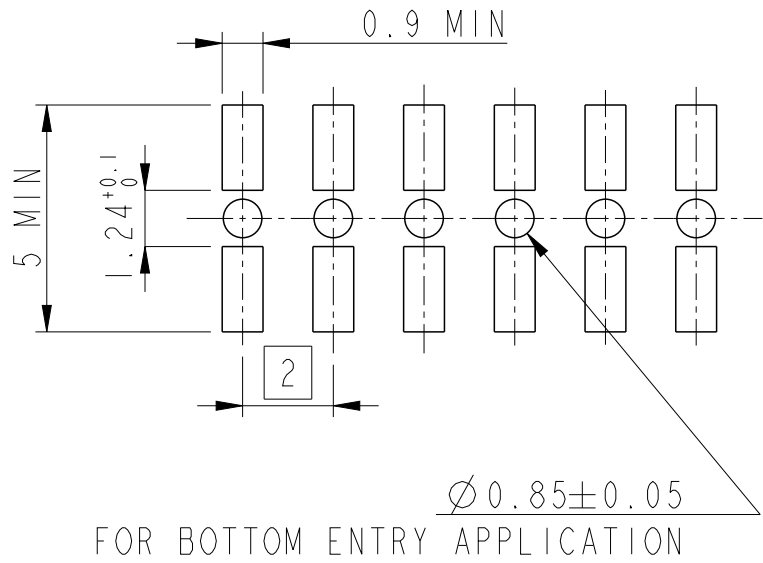
RoHS COMPATIBLE, SEE NOTE 3
PACKAGING : "A" : TAPE & REEL
"U" : TUBE
"B" : TUBE WITH CAP
TOTAL NUMBER OF POSITIONS 02 TO 25

- PLATING :
- 1 = 0.76 μ m GOLD ON CONTACT AREA
2.00 μ m MIN MATTE TIN ON TAIL
 - 2 = 0.38 μ m GOLD ON CONTACT AREA
2.00 μ m MIN MATTE TIN ON TAIL
 - 3 = 0.20 μ m GOLD ON CONTACT AREA
2.00 μ m MIN MATTE TIN ON TAIL
 - 4 = 0.76 μ m GXT ON CONTACT AREA
2.00 μ m MIN MATTE TIN ON TAIL
 - 5 = 0.38 μ m GXT ON CONTACT AREA
2.00 μ m MIN MATTE TIN ON TAIL
 - 6 = 0.20 μ m GXT ON CONTACT AREA
2.00 μ m MIN MATTE TIN ON TAIL
 - 9 = 2.54 μ m MIN MATTE TIN ON CONTACT AREA
2.00 μ m MIN MATTE TIN ON TAIL
 - 1.27 μ m NICKEL MIN UNDERLAYER

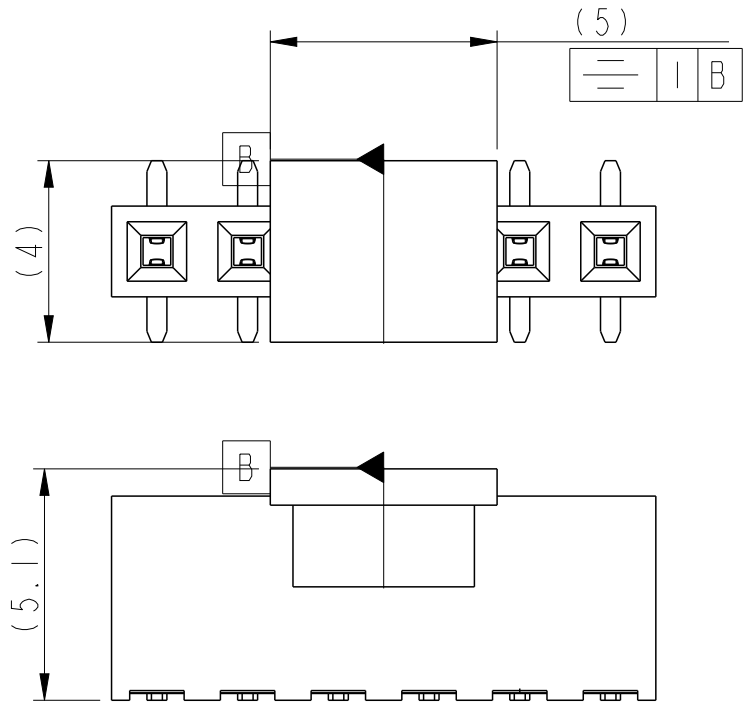
NOTES :
1- MATERIAL
HOUSING : HIGH TEMPERATURE GLASS FILLED FLAME
RETARDANT PER UL 94 V-0
TERMINAL: COPPER ALLOY

2- TO DETERMINE DIMENSIONS :
N = NUMBER OF POSITIONS PER ROW
EXAMPLE : 8 POS N x 2 = 16mm
UP TO N = 12 TOLERANCE : 0
-0.10
FROM N = 13 TOLERANCE : 0.05
-0.10

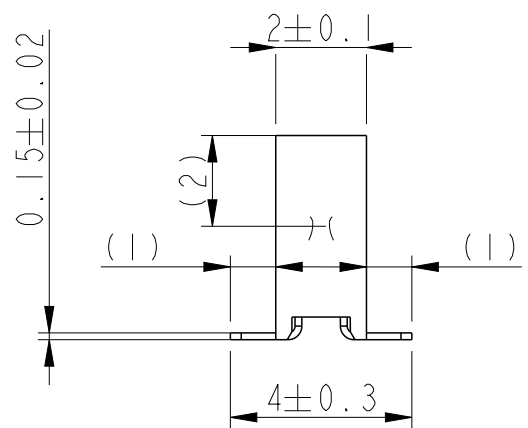
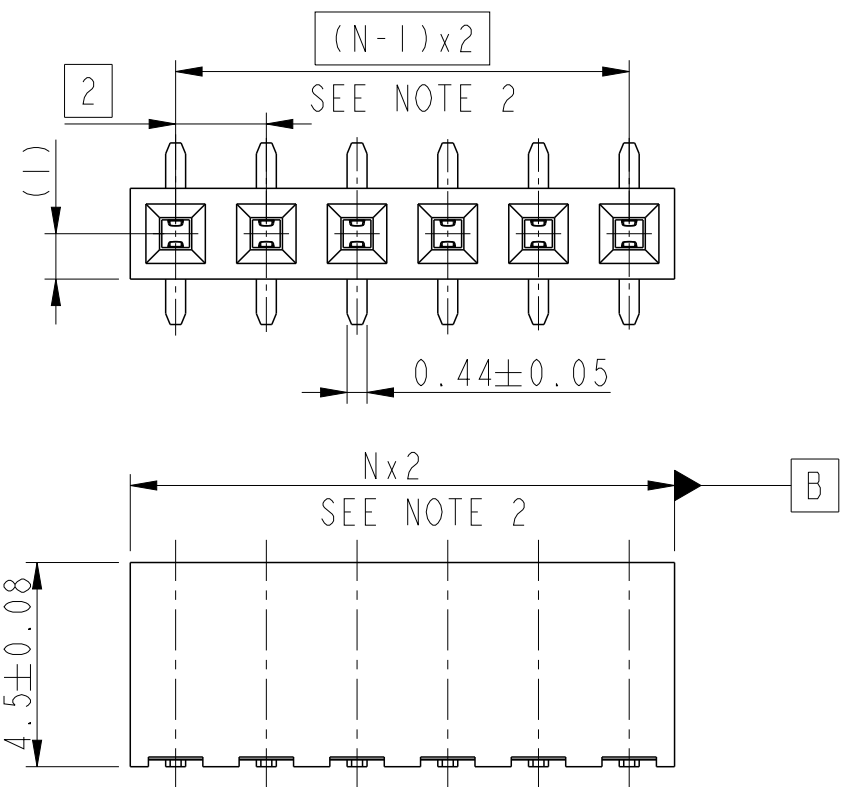
3 - RoHS COMPATIBLE PRODUCT SPECIFICATIONS
a - PLATING :
"LF" MEANS THE PRODUCT IS LEAD-FREE, 2 μ m MINIMUM MATTE
TIN OVER 1.27 μ m MINIMUM NICKEL UNDERPLATE
b - MANUFACTURING PROCESS COMPATIBILITY
THE HOUSING WILL WITHSTAND EXPOSURE TO 260°C PEAK
TEMPERATURE FOR 30 SECONDS MAX IN A CONVECTION, INFRA-RED
OR VAPOR PHASE OR REFLOW OVEN
c - LABELLING :
MEETS PACKAGING SPECS AS PER GS-14-920
d - LEGAL STATEMENT : SEE GS-47-0004



RECOMMENDED PAD LAYOUT



WITH PICK-UP CAP



spec ref	-	dr	Cyril Jeune	2014/12/02	projection	mm	size	A3	scale	6:1
tolerance std	ISO 406 ISO 1101	eng	Detouillon, Da	2020/12/19	chr	-	ecn no	-	rel level	Released
surface	linear	appr	Wollin, Severi	2020/12/18	product family	-	rel level	Released	rev	A
ISO 1302	angular	0°	±°	Amphenol FCi	MINITEK RECEPTACLE 2MM ASSEMBLY VCC SR SMT	cat. no.	-	Product - Customer Drw	sheet 1 of 1	