

15 KLBR 4

Jack connectors



Jack chassis socket, 3.5 mm acc. to JIS C 6560 JC35J3Z, 3 poles/stereo, angular version, with break contact, for printed circuit boards

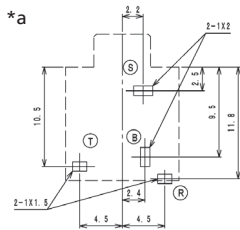
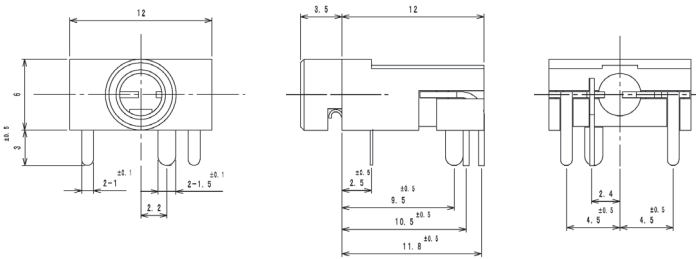
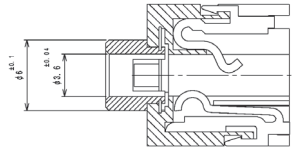
---

State: Active

---

15

KLBR 4



\*a printed circuit board layout, solder side view

#### Environmental conditions

Temperature range -10 °C/+50 °C

#### Materials

Insulating body PBT, V-0 according to UL94  
 Contact bush CuZn, nickel-plated  
 Contact Cu alloy, nickel-plated/silver-plated

#### Mechanical data

Mating cycles 3000  
 Insertion force 4–30 N<sup>1</sup>  
 Withdrawal force 4–30 N<sup>1</sup>

<sup>1</sup> measured with a gauge plug

#### Electrical data (at T<sub>amb</sub> 20 °C)

Contact resistance ≤ 50 mΩ  
 Rated current 1 A  
 Rated voltage 34 V AC/DC  
 Rated impulse voltage 500 V/60 s  
 Insulation resistance ≥ 100 MΩ

#### Associated products

Counterparts  
 ☞ 1532 07 ☞ KLS 40 ☞ KLS 44  
 ☞ WKLS 40

15

KLBR 4

Designation	Pole Number	PU (Pieces)	MDQ (Pieces)
KLBR 4	3	500	500

**Packaging:**

in bulk, in a cardboard box or a plastic bag