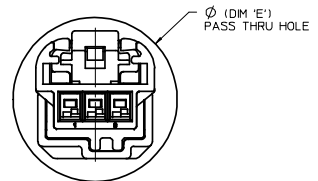
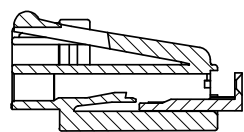
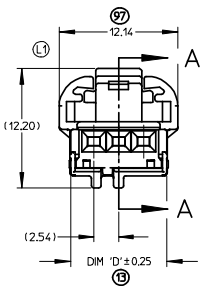
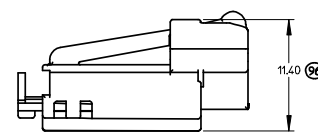


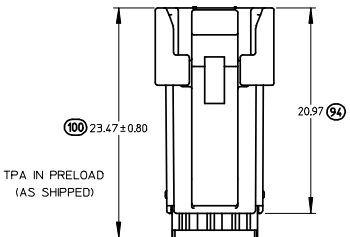
OVERALL MATED LENGTH



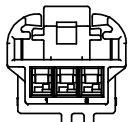
MALE AND FEMALE ASSEMBLY
PASS THRU VIEW
(CAD GENERATED)



SECTION A-A
SCALE 4:1



TPA IN PRELOAD
(AS SHIPPED)



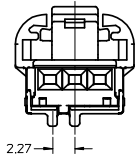
WIRE SIDE

- NOTES:
1. MATERIAL: HOUSING: SPS GLASS FILLED, COLOR SEE CHART.
TPA: PBT
 2. PRODUCT SPECIFICATIONS - IN-LINE MATING INTERFACE: PS-31067-0001.
- DIRECT CONNECT MATING INTERFACE: PS-31100-0001
 3. PACKAGING SPECIFICATION: DRAWING PK-30907-737.
 4. MATES WITH: SEE SALES DRAWINGS SD-31100-003 (MALE IN-LINE),
SD-31197-003 (RIGHT ANGLE HEADER), SD-31101-114 (VERTICAL
"WINGED" HEADER), AND SD-31206-003 (VERTICAL HEADER).
 5. TERMINAL PLATING: TIN (Sn) OVERALL, BRITTE FINISH.
THICKNESS = 15 MICROMETER MINIMUM,
NICKEL (Ni) UNDERPLATE OVERALL.
 6. PACKAGING: PLEASE REFERENCE MOLEX SPECIFICATION PS-34646-001,
AVAILABLE AT WWW.MOLEX.COM. (REFERENCE: TPAs THAT ARE FOUND IN
SEATED (FINAL LOCK) POSITION)
 7. APPLICATION SPECIFICATION: AS-31067-100.

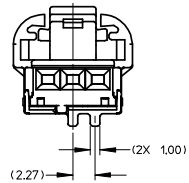
ENTER DESCRIPTION IEC NO. UAU2008-0767 DRAWN: MACHUGA 2008/07/08 CHECKED: CHYKOBLOCK 2008/07/09 APPR: SMARCEAU 2008/07/09	QUALITY SYMBOLS ▽=0 ▽=0	GENERAL TOLERANCES (UNLESS SPECIFIED)		DIMENSION STYLE MM ONLY	SCALE 1:1	DESIGN UNITS METRIC	THIRD ANGLE PROJECTION		
		4 PLACES ± --- ± ---	3 PLACES ± --- ± ---	2 PLACES ± 0.13 ± ---	1 PLACE ± 0.25 ± ---	ANGLAR ± 1/2°	DRAWN BY BDLCK01	DATE 6/22/2007	TITLE FEMALE ASSEMBLY CHARTED SALES DRAWING
		DRAFT WHERE APPLICABLE MUST REMAIN WITHIN DIMENSIONS		MATERIAL NO. SEE CHART	DOCUMENT NO. SD-31109-003	MOLEX INCORPORATED	SHEET NO. 1 OF 4		
		THIS DRAWING CONTAINS INFORMATION THAT IS PROPRIETARY TO MOLEX INCORPORATED AND SHOULD NOT BE USED WITHOUT WRITTEN PERMISSION							

FEMALE VIEWED FROM MATING SIDE

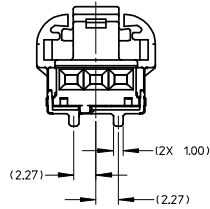
3 WAY POLARIZATION 'A'



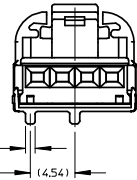
3 WAY POLARIZATION 'B'



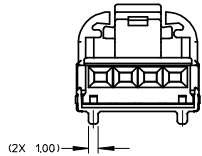
3 WAY POLARIZATION 'C'



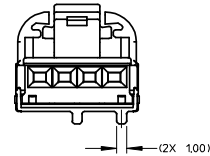
4 WAY POLARIZATION 'A'



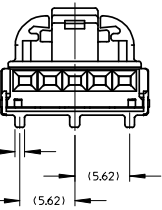
4 WAY POLARIZATION 'B'



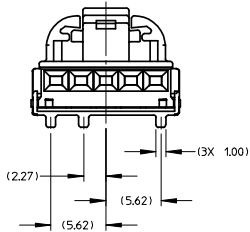
4 WAY POLARIZATION 'C'



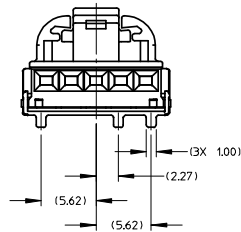
5 WAY POLARIZATION 'A'



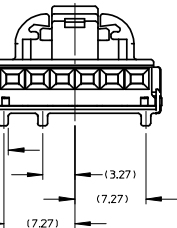
5 WAY POLARIZATION 'B'



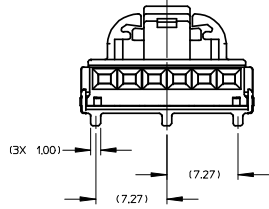
5 WAY POLARIZATION 'C'



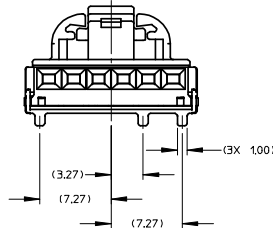
6 WAY POLARIZATION 'A'



6 WAY POLARIZATION 'B'



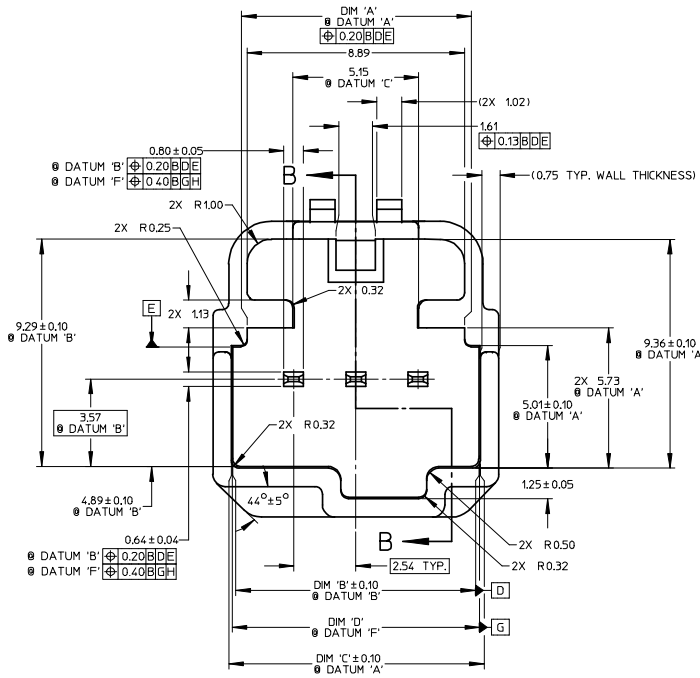
6 WAY POLARIZATION 'C'



BILL OF MATERIALS						MATING ASSEMBLIES PART NUMBERS					
ASSEMBLY PART NUMBER	DESCRIPTION	PART NUMBER	DESCRIPTION	COLOR	DIM 'D'	DIM 'E'	INLINE MALE ASSEMBLY W/O XMAS SLOT	INLINE MALE ASSEMBLY W/ XMAS SLOT	RIGHT ANGLE MALE HEADER ASSEMBLY	VERTICAL MALE HEADER ASSEMBLY	VERTICAL MALE WINGED HEADER ASSY
31067-1010	3 WAY FEMALE ASSEMBLY POLARIZATION 'A'	31111-0030	FEMALE HOUSING	BLACK	9.80	16.76	31067-1040	31067-1070	31100-0030 NOT TOOLED	31101-0030 NOT TOOLED	TBD
		31113-0030	TPA	NATURAL (WHITE)							
31067-1011	3 WAY FEMALE ASSEMBLY POLARIZATION 'B'	31111-0031	FEMALE HOUSING	GRAY	9.80	16.76	31067-1041	31067-1071	31100-0031 NOT TOOLED	31101-0031 NOT TOOLED	TBD
		31113-0030	TPA	NATURAL (WHITE)							
31067-1012	3 WAY FEMALE ASSEMBLY POLARIZATION 'C'	31111-0032	FEMALE HOUSING	BROWN	9.80	16.76	31067-1042	31067-1072	31100-0032 NOT TOOLED	31101-0032 NOT TOOLED	TBD
		31113-0030	TPA	NATURAL (WHITE)							
31068-1010	4 WAY FEMALE ASSEMBLY POLARIZATION 'A'	31157-0040	FEMALE HOUSING	BLACK	12.34	18.25	31068-1040	31068-1070	31100-0040	31101-0040	31101-1140
		31158-0040	TPA	NATURAL (WHITE)							
31068-1011	4 WAY FEMALE ASSEMBLY POLARIZATION 'B'	31157-0041	FEMALE HOUSING	GRAY	12.34	18.25	31068-1041	31068-1071	31100-0041	31101-0041	31101-1240
		31158-0040	TPA	NATURAL (WHITE)							
31068-1012	4 WAY FEMALE ASSEMBLY POLARIZATION 'C'	31157-0042	FEMALE HOUSING	BROWN	12.34	18.25	31068-1042	31068-1072	31100-0042	31101-0042	31101-1340
		31158-0040	TPA	NATURAL (WHITE)							
31072-1010	5 WAY FEMALE ASSEMBLY POLARIZATION 'A'	31160-0050	FEMALE HOUSING	BLACK	14.88	20.25	31072-1040	31072-1070	31100-0050 NOT TOOLED	31101-0050 NOT TOOLED	TBD
		31161-0050	TPA	NATURAL (WHITE)							
31072-1011	5 WAY FEMALE ASSEMBLY POLARIZATION 'B'	31160-0051	FEMALE HOUSING	GRAY	14.88	20.25	31072-1041	31072-1071	31100-0051 NOT TOOLED	31101-0051 NOT TOOLED	TBD
		31161-0050	TPA	NATURAL (WHITE)							
31072-1012	5 WAY FEMALE ASSEMBLY POLARIZATION 'C'	31160-0052	FEMALE HOUSING	BROWN	14.88	20.25	31072-1042	31072-1072	31100-0052 NOT TOOLED	31101-0052 NOT TOOLED	TBD
		31161-0050	TPA	NATURAL (WHITE)							
31073-1010	6 WAY FEMALE ASSEMBLY POLARIZATION 'A'	31163-0060	FEMALE HOUSING	BLACK	17.42	22.75	31073-1040	31073-1070	31100-0060 NOT TOOLED	31101-0060 NOT TOOLED	TBD
		31164-0060	TPA	NATURAL (WHITE)							
31073-1011	6 WAY FEMALE ASSEMBLY POLARIZATION 'B'	31163-0061	FEMALE HOUSING	GRAY	17.42	22.75	31073-1041	31073-1071	31100-0061 NOT TOOLED	31101-0061 NOT TOOLED	TBD
		31164-0060	TPA	NATURAL (WHITE)							
31073-1012	6 WAY FEMALE ASSEMBLY POLARIZATION 'C'	31163-0062	FEMALE HOUSING	BROWN	17.42	22.75	31073-1042	31073-1072	31100-0062 NOT TOOLED	31101-0062 NOT TOOLED	TBD
		31164-0060	TPA	NATURAL (WHITE)							

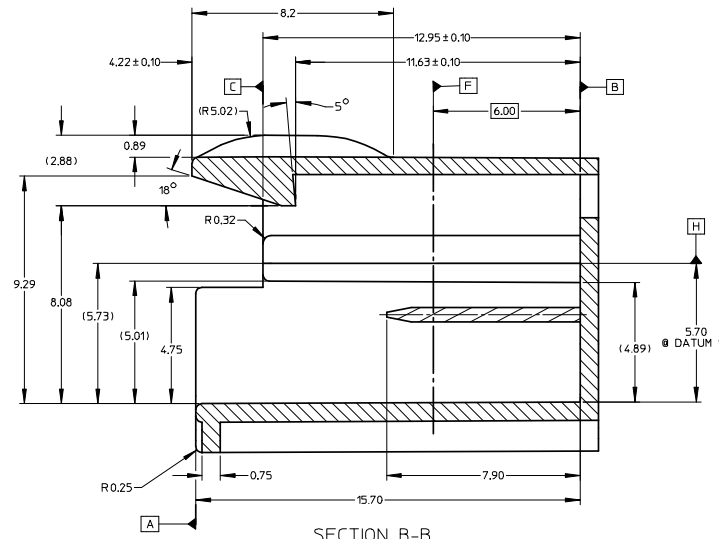
ENTER DESCRIPTION IEC NO. UAU2008-0767 DRAWN/TMACHUGA 2008/07/08 CHYK/BDLCK 2008/07/09 APPR./SMARCEAU 2008/07/09	QUALITY SYMBOLS ▽=0 ▽=0	GENERAL TOLERANCES (UNLESS SPECIFIED)		DIMENSION STYLE MM ONLY	SCALE 1:1	DESIGN UNITS METRIC	THIRD ANGLE PROJECTION		
		4 PLACES ± mm INCH ± ---	3 PLACES ± --- ± ---	2 PLACES ± 0.13 ± ---	1 PLACE ± 0.25 ± ---	DRAWN BY DATE BDLCK01 6/22/2007		TITLE FEMALE ASSEMBLY CHARTED SALES DRAWING	
		ANGULAR ±1/2°				CHECKED BY DATE CDILLON 6/22/2007		APPROVED BY DATE	
		DRAFT WHERE APPLICABLE MUST REMAIN WITHIN DIMENSIONS				MATERIAL NO. SEE CHART		DOCUMENT NO. SD-31109-003	

REFERENCE ONLY

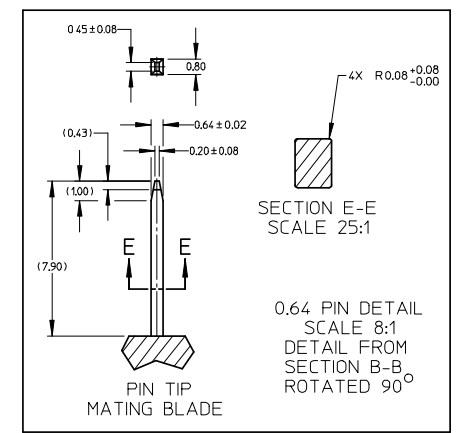


MATING INTERFACE DETAIL
SCALE 10:1

RECOMMENDED MATING MATERIAL: SPS, 30% GLASS FILLED.



SECTION B-B
SCALE 10:1



SECTION E-E
SCALE 25:1

0.64 PIN DETAIL
SCALE 8:1
DETAIL FROM
SECTION B-B
ROTATED 90°

PIN TIP
MATING BLADE

RECOMMENDED DIRECT CONNECT INFO
FOR MATING FEMALE PARTS ONLY

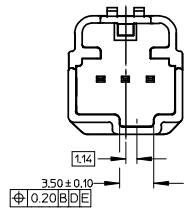
DIMENSIONS FOR DIRECT CONNECT

CIRCUIT SIZE	DIM 'A'	DIM 'B'	DIM 'C'	DIM 'D'
3	8.89	10.05	10.19	10.11
4	11.20	12.59	12.73	12.65
5	13.74	15.13	15.27	15.19
6	16.28	17.67	17.81	17.73

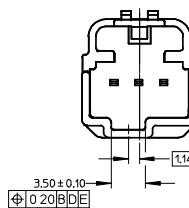
ENTER DESCRIPTION IEC NO. UAU2008-0767 DRAWN BY: MACHUGA 2008/07/08 CHECKED BY: CHYKOBDOCK 2008/07/09 APPROVED BY: APPR:SHARCEAU 2008/07/09	QUALITY SYMBOLS ▽=0 ▽=0	GENERAL TOLERANCES (UNLESS SPECIFIED) mm INCH 4 PLACES ± --- ± --- 3 PLACES ± --- ± --- 2 PLACES ± 0.13 ± --- 1 PLACE ± 0.25 ± --- ANGULAR ±1/2°	DIMENSION STYLE MM ONLY	SCALE 1:1	DESIGN UNITS METRIC	THIRD ANGLE PROJECTION	
	DRAFT WHERE APPLICABLE MUST REMAIN WITHIN DIMENSIONS	MATERIAL NO. SEE CHART	DRAWN BY DATE BDICK01 6/22/2007	CHECKED BY DATE CDILLON 6/22/2007	APPROVED BY DATE	TITLE FEMALE ASSEMBLY CHARTED SALES DRAWING	MOLEX INCORPORATED
	DOCUMENT NO. SD-31109-003	SHEET NO. 3 OF 4	THIS DRAWING CONTAINS INFORMATION THAT IS PROPRIETARY TO MOLEX INCORPORATED AND SHOULD NOT BE USED WITHOUT WRITTEN PERMISSION				

REFERENCE ONLY

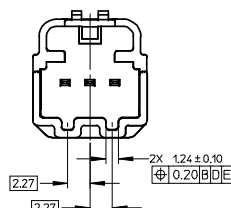
3 WAY POLARIZATION "A"



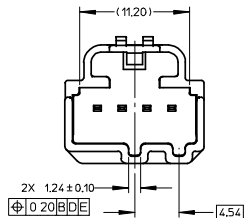
3 WAY POLARIZATION "B"



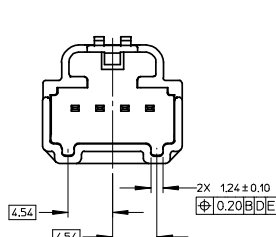
3 WAY POLARIZATION "C"



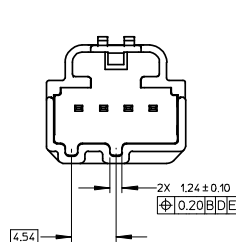
4 WAY POLARIZATION "A"



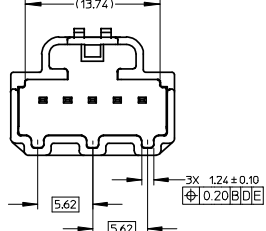
4 WAY POLARIZATION "B"



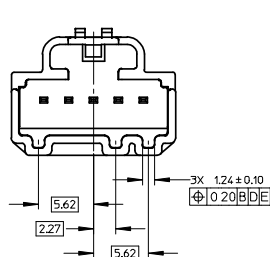
4 WAY POLARIZATION "C"



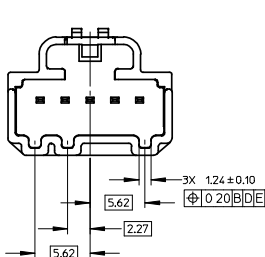
5 WAY POLARIZATION "A"



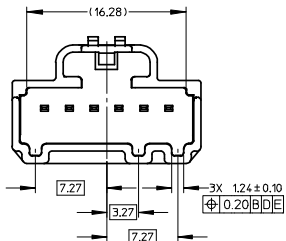
5 WAY POLARIZATION "B"



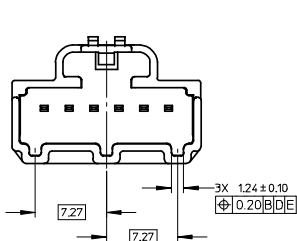
5 WAY POLARIZATION "C"



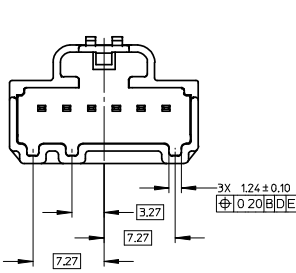
6 WAY POLARIZATION "A"



6 WAY POLARIZATION "B"



6 WAY POLARIZATION "C"



ENTER DESCRIPTION IEC NO: UAU2008-0767 DRAWN: MACHIGA 2008/07/08 CHKD: BDI CK 2008/07/09 APPR: SMARCEAU 2008/07/09 REV: DESCRIPTION	QUALITY SYMBOLS ▽=0 ▽=0		GENERAL TOLERANCES (UNLESS SPECIFIED) mm INCH		DIMENSION STYLE MM ONLY		SCALE 4:1 DESIGN UNITS METRIC		THIRD ANGLE PROJECTION	
	4 PLACES ± --- ± ---		3 PLACES ± --- ± ---		2 PLACES ± 0.13 ± ---		1 PLACE ± 0.25 ± ---		DRAWN BY BDI CK01' DATE 6/22/2007 CHECKED BY CDILLON DATE 6/22/2007 APPROVED BY DATE	
	ANGULAR ± 1/2°		DRAFT WHERE APPLICABLE MUST REMAIN WITHIN DIMENSIONS		SEE CHART		MATERIAL NO. SD-31109-003		DOCUMENT NO. 4 OF 4	
	THIS DRAWING CONTAINS INFORMATION THAT IS PROPRIETARY TO MOLEX INCORPORATED AND SHOULD NOT BE USED WITHOUT WRITTEN PERMISSION									

FEMALE ASSEMBLY CHARTED SALES DRAWING

MOLEX INCORPORATED

SD-31109-003