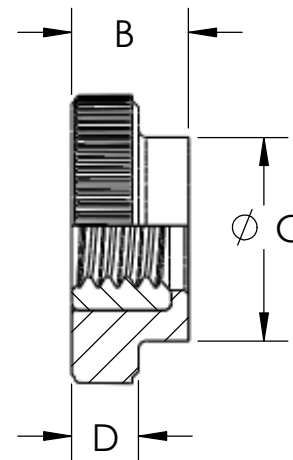
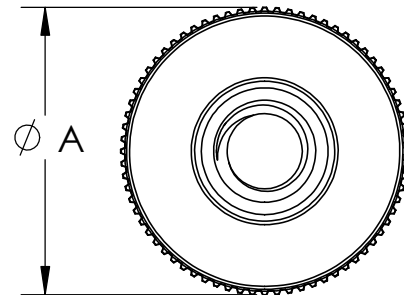
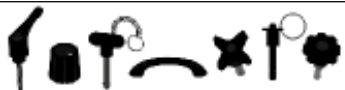


Knob Style	Size	Part Number	A	B	C	D
N1	4-40	KS40---N1--5A0	0.31	0.19	0.28	0.13
N2	6-32 M3	KS62---N2--5A0 KSM3---N2--5A0	0.38	0.23	0.36	0.17
N3	8-32 M4	KS82---N3--5A0 KSM4---N3--5A0	0.50	0.25	0.41	0.18
N4	10-24 10-32 M5	KS04---N4--5A0 KS02---N4--5A0 KSM5---N4--5A0	0.63	0.25	0.42	0.17
N5	1/4-20 1/4-28 M6	KS4C---N5--5A0 KS4F---N5--5A0 KSM6---N5--5A0	0.75	0.31	0.50	0.17
N6	1/4-20 1/4-28 5/16-18 5/16-24 M6 M8	KS4C---N6--5A0 KS4F---N6--5A0 KS5C---N6--5A0 KS5F---N6--5A0 KSM6---N6--5A0 KSM8---N6--5A0	1.00	0.41	0.59	0.27



FOR CUSTOMER APPROVAL ONLY		REV	BY	DATE	COMMENT	DIMENSIONS ARE IN INCHES	DRAWN	GCC	 INNOVATIVE COMPONENTS
NAME:	0	VRR	01/29/15		RELEASE DATE	TOLERANCES	APPROVED	LQR	
TITLE:	1	GCC	02/02/15		Changed specs	FRACTIONAL ± TWO PLACE DECIMAL ± 0.03" THREE PLACE DECIMAL ± 0.010" UNLESS OTHERWISE NOTED	DATE	02/03/2015	Knurled "N" Series Gang Print For Female Thru Hole
DATE:						KNOB MATERIAL	COMMENTS		
SIGNATURE:	PROPRIETARY AND CONFIDENTIAL					Acetal			GANG PRINT FEMALE THRU HOLE
THE INFORMATION CONTAINED IN THIS DRAWING IS THE SOLE PROPERTY OF INNOVATIVE COMPONENTS. ANY REPRODUCTION IN PART OR AS A WHOLE WITHOUT THE WRITTEN PERMISSION OF INNOVATIVE COMPONENTS IS PROHIBITED.						KNOB FINISH			
						Textured			02-02-15 R1
									SCALE 2:1
									SHEET 1 OF 1



PLASTIC KNOBS / CONTROL KNOBS / HANDLES / QUICK RELEASE PINS & BALL LOCK PINS
 SPRING LOADED PINS & PLUNGERS / WIRE ROPE LANYARDS / THREAD IDENTIFIERS