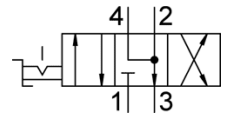


# hand lever valve VHER-H-B43E-B-G12

Part number: 3192068

FESTO



## Data sheet

Feature	Value
Valve function	4/3 exhausted
Type of actuation	manual
Width	80 mm
Standard nominal flow rate	3,800 l/min
Operating pressure	0 ... 10 bar
Note on operating pressure	Vacuum operation -0.95 to 0 must not be connected to port 3 In the case of dual-pressure operation, the pressure at port 1 must be higher than at port 3
Design structure	Rotary slide valve
Nominal size	12 mm
Exhaust-air function	throttleable
Instructions for use	Actuate only manually
Sealing principle	Hard
Type of piloting	direct
Flow direction	non reversible
Freedom from overlap	Yes
Switching position indicator	with accessories
Operating medium	Compressed air in accordance with ISO8573-1:2010 [7:4:4]
Note on operating and pilot medium	Lubricated operation possible (subsequently required for further operation)
Corrosion resistance classification CRC	2 - Moderate corrosion stress
Medium temperature	-20 ... 80 °C
Ambient temperature	-20 ... 80 °C
Actuation torque	5 Nm
Product weight	860 g
Mounting type	Optional Front panel installation with through hole
Pneumatic connection, port 1	G1/2
Pneumatic connection, port 2	G1/2
Pneumatic connection, port 3	G1/2
Pneumatic connection, port 4	G1/2
Materials note	Free of copper and PTFE Conforms to RoHS
Material seals	NBR
Material housing	Aluminium die cast
Material lever	Aluminium die cast