

## RS Stock No : 415-935

002211001 D01 gG 2A/400V



Add to cart



### Specifications

ETI Code	002211001
Description	D01 gG 2A/400V
Weight	5.9
Level	Fuse links gG
Breaking capacity (AC)	50kA
Breaking capacity DC	8kA
Characteristics	gG
Dimensions	E14
Product group	D0 low voltage Fuses
Rated AC voltage	400V
Rated current	2A
Rated DC voltage	250V
Size	D01
Type	D0

## RS Stock No : 415-941

002211002 D01 gG 4A/400V



Add to cart



### Specifications

ETI Code	002211002
Description	D01 gG 4A/400V
Weight	5.9
Level	Fuse links gG
Breaking capacity (AC)	50kA
Breaking capacity DC	8kA
Characteristics	gG
Dimensions	E14
Product group	D0 low voltage Fuses
Rated AC voltage	400V
Rated current	4A
Rated DC voltage	250V
Size	D01
Type	D0

## RS Stock No : 415-957

002211003 D01 gG 6A/400V



Add to cart



### Specifications

ETI Code	002211003
Description	D01 gG 6A/400V
Weight	5.9
Level	Fuse links gG
Breaking capacity (AC)	50kA
Breaking capacity DC	8kA
Characteristics	gG
Dimensions	E14
Product group	D0 low voltage Fuses
Rated AC voltage	400V
Rated current	6A
Rated DC voltage	250V
Size	D01
Type	D0

## RS Stock No : 415-963

002211004 D01 gG 10A/400V



Add to cart



### Specifications

ETI Code	002211004
Description	D01 gG 10A/400V
Weight	6.6
Level	Fuse links gG
Breaking capacity (AC)	50kA
Breaking capacity DC	8kA
Characteristics	gG
Dimensions	E14
Product group	D0 low voltage Fuses
Rated AC voltage	400V
Rated current	10A
Rated DC voltage	250V
Size	D01
Type	D0

## RS Stock No : 415-979

002211005 D01 gG 16A/400V



Add to cart



### Specifications

ETI Code	002211005
Description	D01 gG 16A/400V
Weight	6.6
Level	Fuse links gG
Breaking capacity (AC)	50kA
Breaking capacity DC	8kA
Characteristics	gG
Dimensions	E14
Product group	D0 low voltage Fuses
Rated AC voltage	400V
Rated current	16A
Rated DC voltage	250V
Size	D01
Type	D0

## RS Stock No : 289-8792

002221011 D01 E14 16A N-K 1p



Add to cart



### Specifications

ETI Code	002221011
Description	D01 E14 16A N-K 1p
Weight	.072
Level	Fuse bases
Dimensions	E14
Product group	LV-fuse base
Rated current	16A
Size	D0
Type	D01N-K

# RS Stock No : 289-8815

002231003 KN D01



Add to cart



## Specifications

<i>ETI Code</i>	002231003
<i>Description</i>	KN D01
<i>Weight</i>	.019
<i>Level</i>	<b>Fuse bases and disconnectors</b>
<i>Product group accessories</i>	<b>Fuse Base D0</b>
<i>To use with</i>	<b>Fuse carrier D0</b>
<i>Type accessories</i>	<b>Fuse carrier D0</b>

## RS Stock No : 415-985

002212001 D02 gG 20A/400V



Add to cart



### Specifications

ETI Code	002212001
Description	D02 gG 20A/400V
Weight	12
Level	Fuse links gG
Breaking capacity (AC)	50kA
Breaking capacity DC	8kA
Characteristics	gG
Dimensions	E18
Product group	D0 low voltage Fuses
Rated AC voltage	400V
Rated current	20A
Rated DC voltage	250V
Size	D02
Type	D0

## RS Stock No : 415-991

002212002 D02 gG 25A/400V



Add to cart



### Specifications

ETI Code	002212002
Description	D02 gG 25A/400V
Weight	13
Level	Fuse-Links
Breaking capacity (AC)	50kA
Breaking capacity DC	8kA
Characteristics	gG
Dimensions	E18
Product group	D0 low voltage Fuses
Rated AC voltage	400V
Rated current	25A
Rated DC voltage	250V
Size	D02
Type	D0

## RS Stock No : 416-001

002212003 D02 gG 35A/400V



Add to cart



### Specifications

ETI Code	002212003
Description	D02 gG 35A/400V
Weight	13
Level	Fuse links gG
Breaking capacity (AC)	50kA
Breaking capacity DC	8kA
Characteristics	gG
Dimensions	E18
Product group	D0 low voltage Fuses
Rated AC voltage	400V
Rated current	35A
Rated DC voltage	250V
Size	D02
Type	D0

## RS Stock No : 416-017

002212004 D02 gG 50A/400V



Add to cart



### Specifications

ETI Code	002212004
Description	D02 gG 50A/400V
Weight	13
Level	Fuse links gG
Breaking capacity (AC)	50kA
Breaking capacity DC	8kA
Characteristics	gG
Dimensions	E18
Product group	D0 low voltage Fuses
Rated AC voltage	400V
Rated current	50A
Rated DC voltage	250V
Size	D02
Type	D0

## RS Stock No : 416-023

002212005 D02 gG 63A/400V



Add to cart



### Specifications

ETI Code	002212005
Description	D02 gG 63A/400V
Weight	13
Level	Fuse-Links
Breaking capacity (AC)	50kA
Breaking capacity DC	8kA
Characteristics	gG
Dimensions	E18
Product group	D0 low voltage Fuses
Rated AC voltage	400V
Rated current	63A
Rated DC voltage	250V
Size	D02
Type	D0

## RS Stock No : 289-8821

002222011 D02 E18 63A N-K 1p



Add to cart



### Specifications

ETI Code	002222011
Description	D02 E18 63A N-K 1p
Weight	.093
Level	Fuse bases
Dimensions	E18
Product group	LV-fuse base
Rated current	63A
Size	D0
Type	D02N-K

# RS Stock No : 289-8843

002232003 KN D02



Add to cart



## Specifications

<i>ETI Code</i>	<b>002232003</b>
<i>Description</i>	<b>KN D02</b>
<i>Weight</i>	<b>.019</b>
<i>Level</i>	<b>Fuse bases and disconnectors</b>
<i>Product group accessories</i>	<b>Fuse Base D0</b>
<i>To use with</i>	<b>Fuse carrier D0</b>
<i>Type accessories</i>	<b>Fuse carrier D0</b>



## Fuse-link D0

D0 fuse-links are used as the most reliable protection of electrical installation, control and signal circuits against over-load and short-circuit currents.

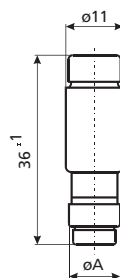
The whole system D0 contains a complete range of three physical sizes D01, D02 and D03 fuse-links, standard ceramic and new plastic bases, fuse disconnectors and all necessary accessories. It is dimensioned for rated voltages 400 V a.c. resp. 250 V d.c. with AC 50kA and DC 8kA rated breaking capacity.

The system D0 is intended to be used in residential, business and similar buildings. When it is used in industrial installations, it is necessary to take into account the requirements of the standard IEC 60664-1 concerning the insulation coordination for equipment within low-voltage systems.

All fuse-links have blown-fuse indicators which are visible through the screw cap when mounted. Fuse-links, fuse-bases, caps and fuse-disconnectors are tested and certified according to IEC 60269-3-1, DIN EN 60269-3, DIN VDE 0636-301, HD 630.3.1, DIN EN 60269-1, EN 60947-1 and EN 60947-3.

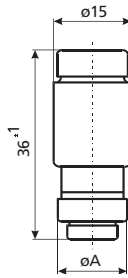
Technical data	
Rated voltage $U_n$	400 V AC, 250 V DC
Rated current $I_n$	D01 2 - 16 A, D02 20 - 63 A, D03 80 - 100 A
Breaking capacity at $1,1 U_n$	50 kA AC $\cos \phi = 0,1$
	8 kA DC $T = 15 \text{ ms}$
Fusing characteristics	gG
Standards	DIN EN 60269-1, IEC 60269-1:2005-04 (VDE 0636 Teil 10): 1999-11
	DIN EN 60269-3, IEC 60269-3:2003 (VDE 0636 Teil 30): 1995-12
	DIN EN 60269-3-1, IEC 60269-3-1: 2004-07
	(VDE 0636 Teil 301): 1998-01
	DIN VDE 0635/02.84

D01 gG for fuse base E 14	
$I_n$ [A]	dimension $\varnothing A$
2	7,3
4	7,3
6	7,3
10	8,5
13	8,5
16	9,7



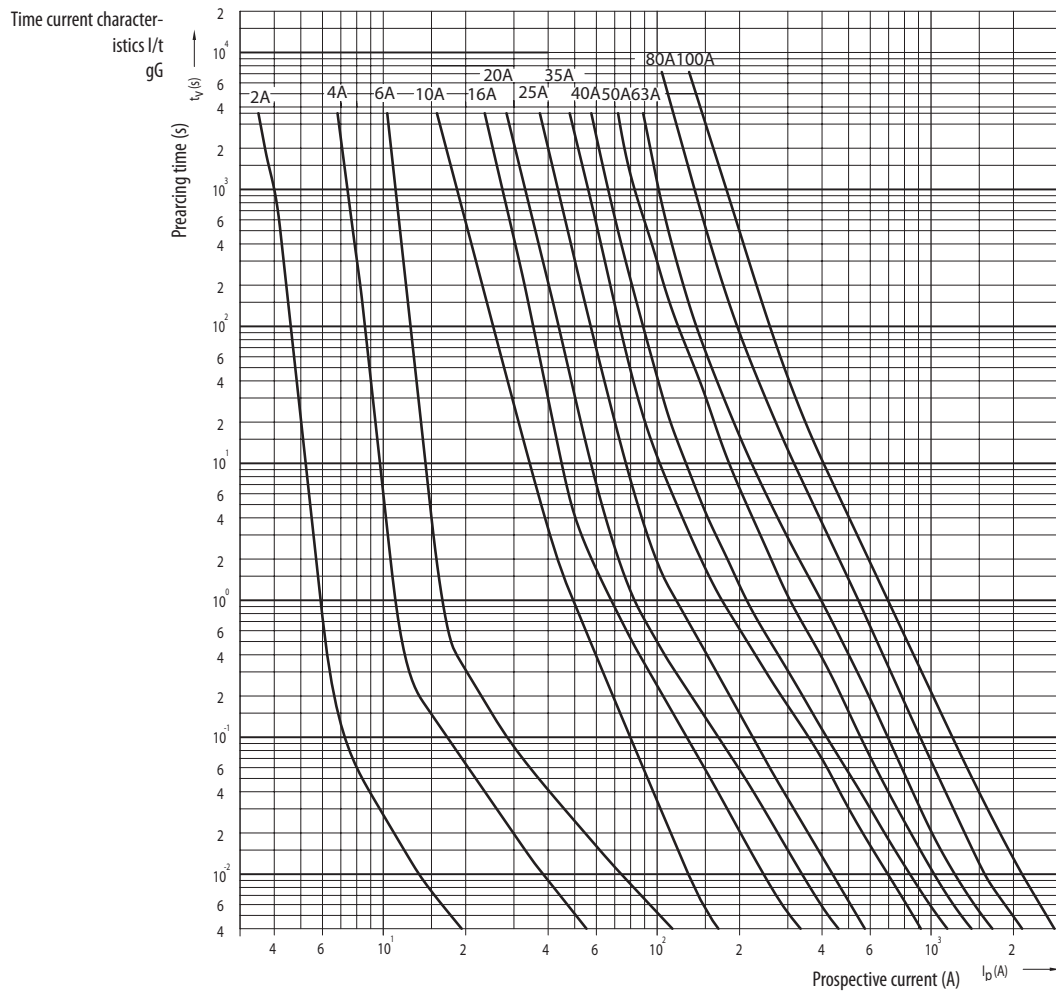
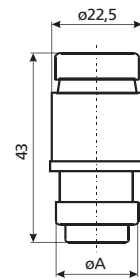
**D02 gG for fuse base E 18**

$I_n$ [A]	dimension ØA
20	10,9
25	12,1
32	13,3
35	13,3
40	13,3
50	14,5
63	15,9

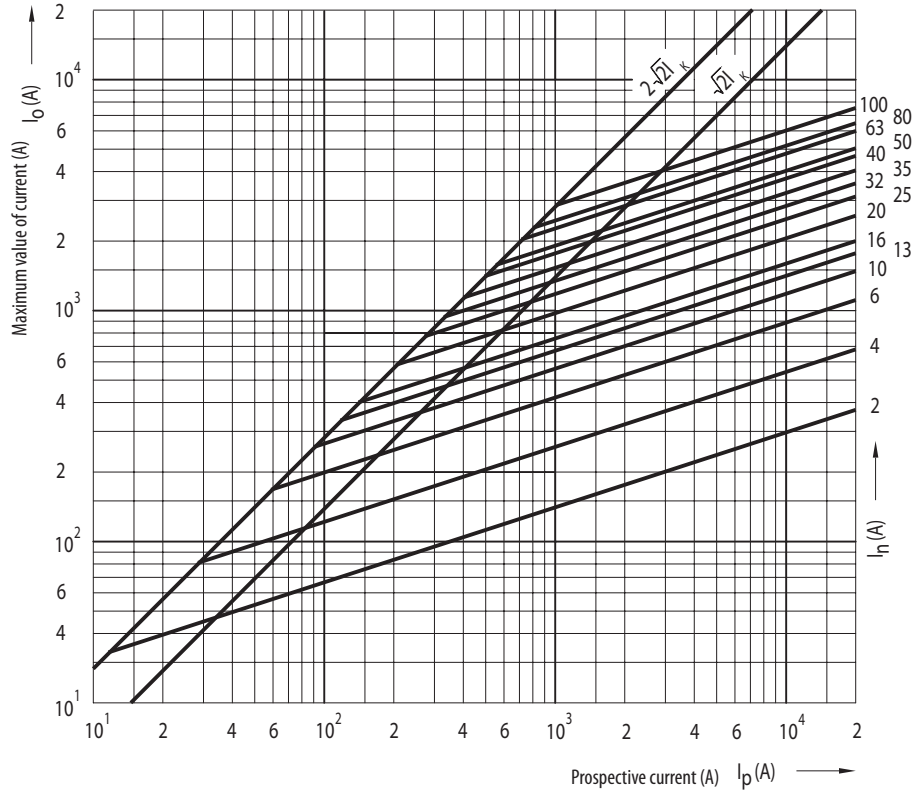


**D03 gG for fuse base M 30 x 2**

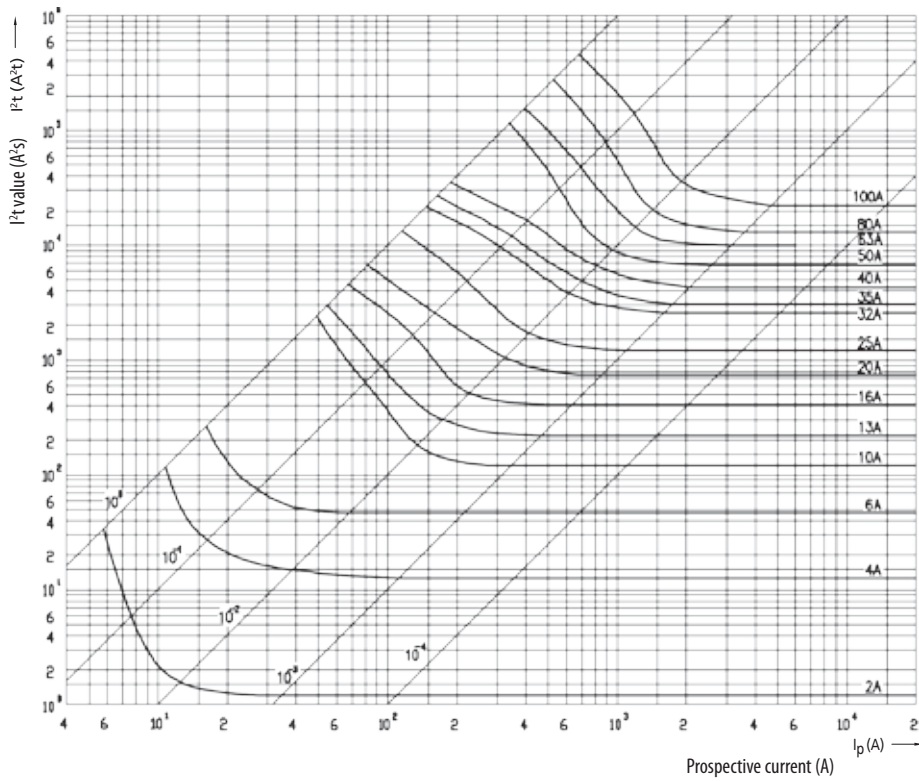
$I_n$ [A]	dimension ØA
80	21,4
100	21,4



Cut-off current characteristics



Melting energy characteristics  $I^2t$



## Ceramic fuse base

Technical data	
Rated voltage $U_n$	400 V AC
Rated current $I_n$	D01 16 A, D02 63 A
Cross-section of connecting lead	D01 1 - 4 mm <sup>2</sup> D02 1,5 - 25 mm <sup>2</sup>
Connection clamp	with screw +- PZ
Standards	IEC 60269, EN 60269, DIN VDE 0636, SIST EN 60269

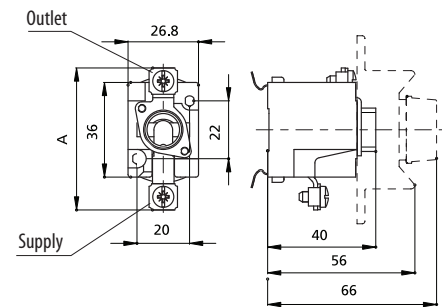
The fuse bases D0 are planned to be built into distribution boxes in domestic and public installations. Total security against parts under voltage is achieved by installing DO fuse bases into domestic or industrial distribution boards. Ceramic fuse-bases are tested and certified according to IEC 60269-3-1, DIN EN 60269-1, DIN EN 60269-3 and DIN VDE 0636-301.

### Advantages

- modular construction-module 9 mm
- smaller weight and smaller height (66 mm) provide installation into the flush-mounting distribution boxes, the depth of which is 80 mm only
- by the use of gauge-piece key it is possible to change the gauge rings under voltage
- the possibility of simple substitution of base D0 1 with D0 2

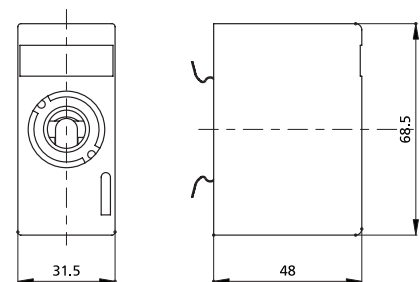
### 1-pole fuse base D0

type	connections		cross-section of connecting lead [mm <sup>2</sup> ]	dimension A [mm]
	outlet	supply		
D01N - K			1,5 - 4	53
D01V - K			1,5 - 4	53
D02N - K			2,5 - 25	57
D02V - K			2,5 - 25	57
D02N MS - K			2,5 - 25	57
D02V MS - K			2,5 - 25	57
D01N			1,5 - 4	53
D01V			1,5 - 4	53
D02N			2,5 - 25	57
D02V			2,5 - 25	57
D02N MS			2,5 - 25	57
D02V MS			2,5 - 25	57



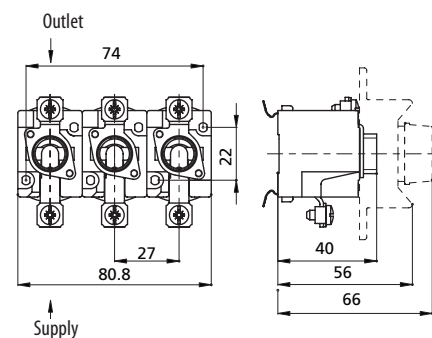
### 1-pole fuse base D0 - U

type	connections		cross-section of connecting lead [mm <sup>2</sup> ]
	outlet	supply	
D01 U			1,5 - 4
D02 U			2,5 - 25



### 3-pole fuse base D0

type	connections		cross-section of connecting lead [mm <sup>2</sup> ]	dimension A [mm]
	outlet	supply		
D01N/3 - K			1,5 - 4	53
D01V/3 - K			1,5 - 4	53
D02N/3 - K			2,5 - 25	57
D02V/3 - K			2,5 - 25	57
D02N/3 MS - K			2,5 - 25	57
D02V/3 MS - K			2,5 - 25	57
D01N/3			1,5 - 4	53
D01V/3			1,5 - 4	53
D02N/3			2,5 - 25	57
D02V/3			2,5 - 25	57
D02N/3 MS			2,5 - 25	57
D02V/3 MS			2,5 - 25	57

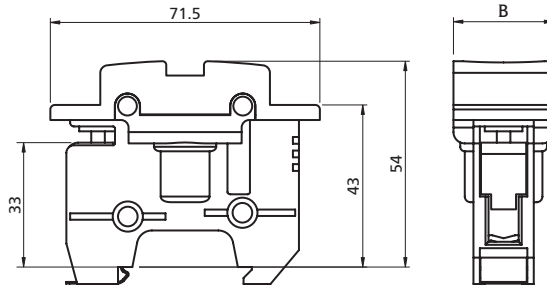


## Plastic fuse base PPD01 and PPD02

Plastic fuse bases series PPD01 and PPD02 are mainly intended to be build into distribution boxes in domestic, office and schools installations.  
Total security against parts under voltage is achieved by installing PPD0 fuse bases into domestic or industrial distribution boards. Plastic fuse bases are tested and certified according to IEC 60269-3-1, DIN EN 60269-1, DIN EN 60269-3 and DIN VDE 0636-301.

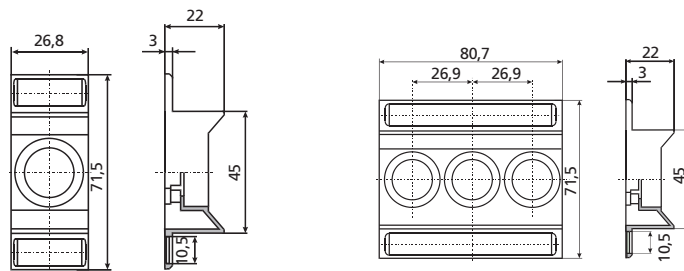
### Advantages

- Connection at the input is possible with a clamp or with a screw, at the output it is possible to connect with a clamp
- Mounting is on a standard rail 35 mm (according to DIN EN 60715)
- Temperature resistant material
- Smaller weight of the product
- Layout is adjusted for modern build-in devices



type	B [mm]
1p	26,8
3p	80,4

## Protection cover



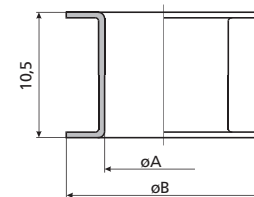
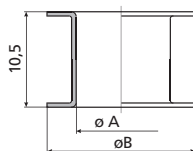
D01, D02

D01/3, D02/3

## Gauge piece

V D01 for fuse base E 14		
$I_n$ [A]	dimension	
	$\varnothing A$	$\varnothing B$
2	7,9	12
4	7,9	12
6	7,9	12
10	9,1	12

V D02 for fuse base E 18		
$I_n$ [A]	dimension	
	$\varnothing A$	$\varnothing B$
2*	7,9	16,6
4*	7,9	16,6
6*	7,9	16,6
10*	9,1	16,6
16*	10,3	16,6
20	11,5	16,6
25	12,7	16,6
35	13,9	16,6
50	15,1	16,6



\*For using fuse-links D01 and fuse bases D02.

## Fuse carrier D0

