

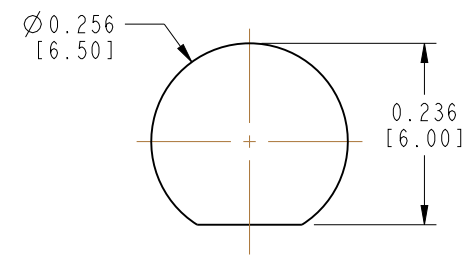
NOTES:

1. MATERIALS AND FINISHES:
 SMA STR BHD JACK IP 67 - BRASS, NICKEL PLATING
 SMA STR PLUG IP 67 - BRASS, NICKEL PLATING
 CABLE - LMR 200
2. ELECTRICAL:
 A. IMPEDANCE: 50 OHM
3. PACKAGING:
 A. QUANTITY: SINGLE PACK
 B. MARKING: BAG TO BE MARKED
 "AMPHENOL RF, 95-902-506-XXX AND DATE CODE"

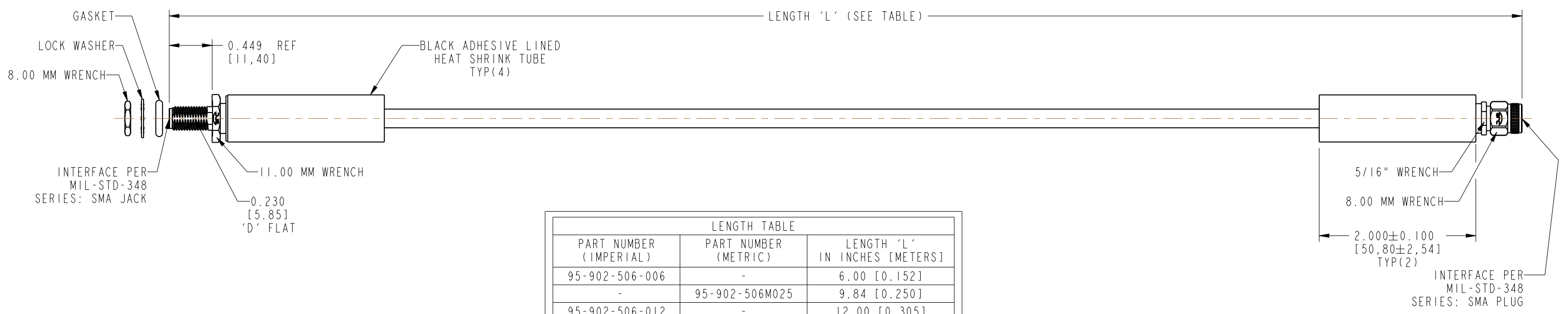
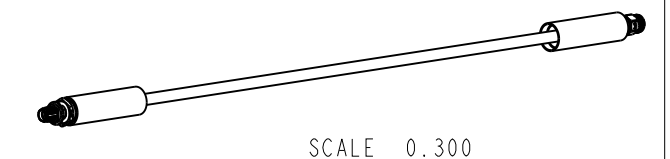
THIRD ANGLE PROJ.

REVISIONS

REV	DESCRIPTION	DATE	ECO	APPR
A	RELEASE TO MFG.	17-Oct-19	13304	AAP



RECOMMENDED MOUNTING HOLE DIMENSIONS



LENGTH TABLE		
PART NUMBER (IMPERIAL)	PART NUMBER (METRIC)	LENGTH 'L' IN INCHES [METERS]
95-902-506-006	-	6.00 [0.152]
-	95-902-506M025	9.84 [0.250]
95-902-506-012	-	12.00 [0.305]
95-902-506-018	-	18.00 [0.457]
-	95-902-506M050	19.69 [0.500]
95-902-506-024	-	24.00 [0.610]
-	95-902-506M075	29.53 [0.750]
95-902-506-036	-	36.00 [0.914]
-	95-902-506M100	39.37 [1.000]
95-902-506-048	-	48.00 [1.219]
-	95-902-506M200	78.74 [2.000]
-	95-902-506M400	157.48 [4.000]

TOLERANCE TABLE	
LENGTH IN INCHES/FT [METERS]	TOLERANCE
0" - 23.90" [0 - 0.607]	±0.25" [0.006]
24.00" - 59.00" [0.610 - 1.499]	±0.50" [0.013]
5.0' - 24.9' [1.524 - 7.617]	±2.5%
25.0' & UP [7.620 & UP]	±5.0%

DESIGN REQUIREMENTS:

<input checked="" type="checkbox"/> FREQUENCY: DC - 8 GHz	<input checked="" type="checkbox"/> CONTINUITY
<input type="checkbox"/> VSWR: _____ : 1 MAX.	<input checked="" type="checkbox"/> HI-POT: 750 VRMS
<input type="checkbox"/> INS. LOSS: _____ dB MAX.	<input type="checkbox"/> OTHER

CUSTOMER OUTLINE DRAWING
 ALL OTHER SHEETS ARE FOR INTERNAL USE ONLY

UNLESS OTHERWISE SPECIFIED, DIMENSIONS ARE IN INCHES AND TOLERANCES ARE: 2 PLACE DECIMAL 3 PLACE DECIMAL ANGLES ±.015 (0,381 mm) ±.005 (0,127 mm) ± 1°	MATERIAL	DRAWN	DATE	TITLE SMA STR BHD JACK IP 67 TO SMA STR PLUG IP 67 USING LMR 200 CABLE VARIOUS LENGTH	Amphenol RF www.amphenolrf.com
	SEE NOTES	A ARUN PRABU	11-Feb-19		
NOTICE - These drawings, specifications, or other data (1) are, and remain the property of Amphenol corp. (2) must be returned upon request; and (3) are confidential and not to be disclosed to any person other than those to whom they are given by Amphenol Corp. the furnishing of these drawings, specifications, or other data by Amphenol Corp., or to any other person to anyone for any purpose is not to be regarded by implication or otherwise in any manner licensing, granting rights to permitting such holder or any other person to manufacture, use or sell any product, process or design, patented or otherwise, that may in any way be related to or disclosed by said drawings, specifications, or other data.	REFERENCE	ENGINEER	DATE	SCALE: 1.0:1.0	DRAWING NO. 95-902-506-XXX
	EAR # 8898	A ARUN PRABU	11-Feb-19	SHEET 2 OF 2	
	CONFIGURATION LEVEL: In Work	APPROVED	DATE		DWG SIZE
FINISH	K.CAPOZZI	17-Oct-19		B	A
					PART NO. 95-902-506-XXX

Mouser Electronics

Authorized Distributor

Click to View Pricing, Inventory, Delivery & Lifecycle Information:

Amphenol:

[095-902-506-006](#) [095-902-506-012](#) [095-902-506-018](#) [095-902-506-024](#) [095-902-506-036](#) [095-902-506M400](#) [095-902-506-048](#) [095-902-506M025](#) [095-902-506M050](#) [095-902-506M075](#) [095-902-506M100](#) [095-902-506M200](#)