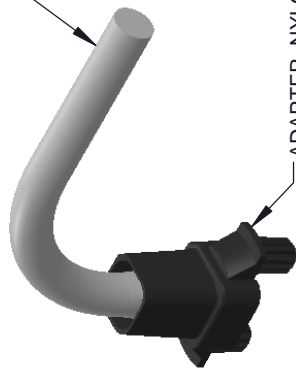
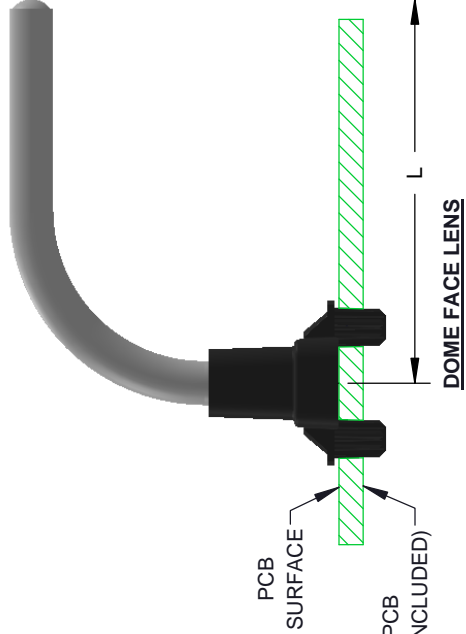
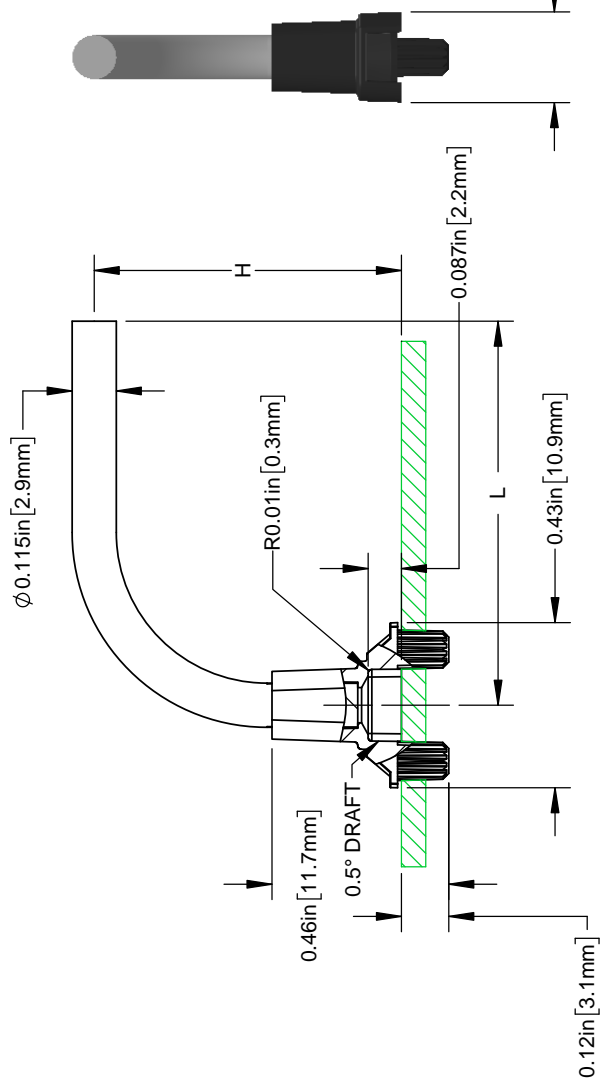
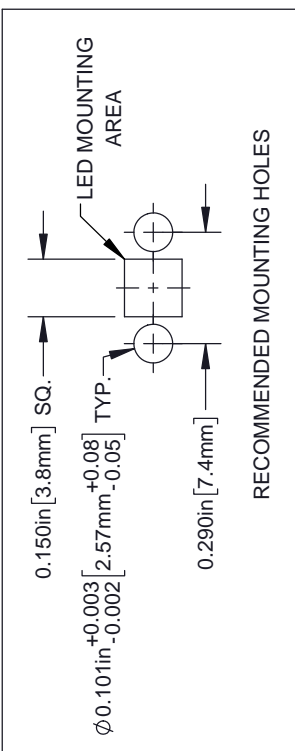


REVISIONS			
REV.	DESCRIPTION	DATE	APPROVED
B	Engineering Release	3/16/2018	M.C.

LIGHT PIPE,  
CLEAR PC, 94V-0

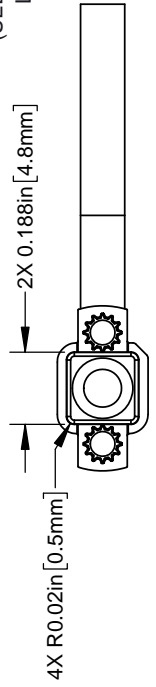


ADAPTER, NYLON 66,  
94V-0, BLACK



**FLAT FACE LENS**

DIMENSIONS ARE APPLICABLE TO BOTH LENS FACES UNLESS OTHERWISE NOTED



PART NUMBER CONFIGURATION  
(SEE PAGE 2, TABLES A & B)  
LPR3-XXXX-XXXXXP

STANDARD TOLERANCE  
(UNLESS OTHERWISE SPECIFIED)

DECIMALS	ANGULAR
.X ± .1	X° ± 1°
.XX ± .01	
.XXX ± .005	

DESIGNED:	DATE:	TITLE:
K. BARON	03/16/18	BIVAR LIGHT PIPE SYSTEM, RIGHT ANGLE, 3MM, SINGLE STATION
REVISED:	DATE:	PART NO.:
N/A	N/A	LPR3-XXXX-XXXXXP
CHECKED:	DATE:	CAGE CODE:
TD. NGUYEN	03/16/18	32559
		SCALE: 2:1
		SHEET # 1 OF 2

**BIVAR**<sup>®</sup>  
4 THOMAS, IRVINE, CA. 92618  
TEL: (949) 951-8808 FAX: (949) 951-3974

REVISIONS		
REV.	DESCRIPTION	DATE
	See Sheet 1	
		APPROVED

## STANDARD ORDERING INFORMATION

TABLE A - FLAT FACE LENS		
PART NO.	H ±.01	L ±.01
LPR3-0800-0700FP	0.800 [20.3mm]	0.700 [17.8mm]
LPR3-0800-1000FP		1.000 [25.4mm]
LPR3-0800-1500FP		1.500 [38.1mm]
LPR3-0800-2000FP		2.000 [50.8mm]
LPR3-0800-2500FP		2.500 [63.5mm]
LPR3-0800-3000FP		3.000 [76.2mm]
LPR3-1000-0700FP	1.000 [25.4mm]	0.700 [17.8mm]
LPR3-1000-1000FP		1.000 [25.4mm]
LPR3-1000-1500FP		1.500 [38.1mm]
LPR3-1000-2000FP		2.000 [50.8mm]
LPR3-1000-2500FP		2.500 [63.5mm]
LPR3-1000-3000FP		3.000 [76.2mm]
LPR3-1250-0700FP	1.250 [31.8mm]	0.700 [17.8mm]
LPR3-1250-1000FP		1.000 [25.4mm]
LPR3-1250-1500FP		1.500 [38.1mm]
LPR3-1250-2000FP		2.000 [50.8mm]
LPR3-1250-2500FP		2.500 [63.5mm]
LPR3-1250-3000FP		3.000 [76.2mm]

TABLE B - DOME FACE LENS		
PART NO.	H ±.01	L ±.01
LPR3-0800-0700DP	0.800 [20.3mm]	0.700 [17.8mm]
LPR3-0800-1000DP		1.000 [25.4mm]
LPR3-0800-1500DP		1.500 [38.1mm]
LPR3-0800-2000DP		2.000 [50.8mm]
LPR3-0800-2500DP		2.500 [63.5mm]
LPR3-0800-3000DP		3.000 [76.2mm]
LPR3-1000-0700DP	1.000 [25.4mm]	0.700 [17.8mm]
LPR3-1000-1000DP		1.000 [25.4mm]
LPR3-1000-1500DP		1.500 [38.1mm]
LPR3-1000-2000DP		2.000 [50.8mm]
LPR3-1000-2500DP		2.500 [63.5mm]
LPR3-1000-3000DP		3.000 [76.2mm]
LPR3-1250-0700DP	1.250 [31.8mm]	0.700 [17.8mm]
LPR3-1250-1000DP		1.000 [25.4mm]
LPR3-1250-1500DP		1.500 [38.1mm]
LPR3-1250-2000DP		2.000 [50.8mm]
LPR3-1250-2500DP		2.500 [63.5mm]
LPR3-1250-3000DP		3.000 [76.2mm]



REVISION:	B
PART NO:	LPR3-XXXX-XXXXXP
SCALE:	N/A
SHEET #	2 OF 2
CAD GENERATED DOCUMENT, DO NOT MEASURE DRAWING	