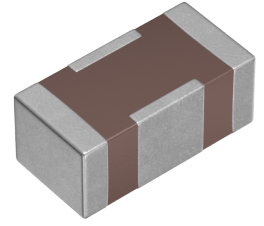


<b>Applications</b>	Commercial Grade
<b>Feature</b>	<b>Large Current</b> For Large Current Power Line
<b>Series</b>	YFF
<b>Status</b>	Production
<b>Brand</b>	TDK



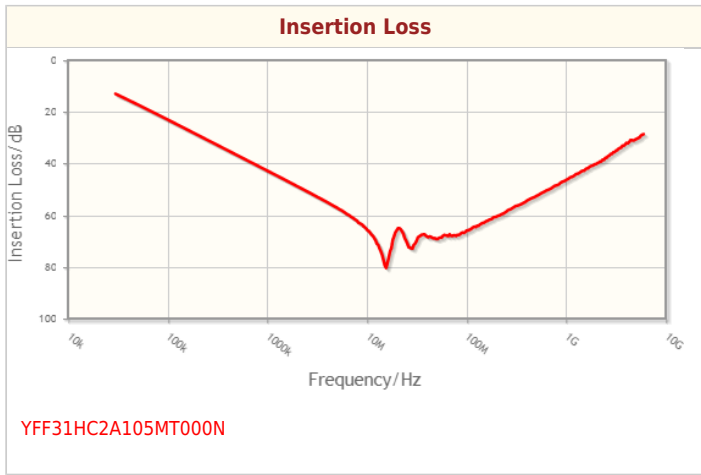
Size	
Length(L)	3.20mm ±0.20mm
Width(W)	1.60mm ±0.20mm
Thickness(T)	1.30mm ±0.20mm

Electrical Characteristics	
Insertion Loss [Typ.]	40dB (0.8MHz to 2GHz)
Cut-Off Frequency [Typ.]	
Rated Voltage [Max.]	100V
Rated Current [Max.]	6A
Rated Current Derating	DC6A/105°C, DC4A/125°C
DC Resistance (Max.)	5mΩ
Rated Capacitance [Typ.]	1μF

Other	
Circuit Type	Feed Through Type
Transmission Line	Single-ended
Operating Temp. Range	-55 to 125°C
Soldering Method	Reflow
AEC-Q200	NO
Packing	Embossed (Plastic)Taping [180mm Reel]
Package Quantity	2000pcs
Weight	

! Images are for reference only and show exemplary products.  
! This PDF document was created based on the data listed on the TDK Corporation website.  
! All specifications are subject to change without notice.

Characteristic Graphs(This is reference data, and does not guarantee the products characteristics.)



! Images are for reference only and show exemplary products.  
! This PDF document was created based on the data listed on the TDK Corporation website.  
! All specifications are subject to change without notice.

## Associated Images

