

# EMI Filter

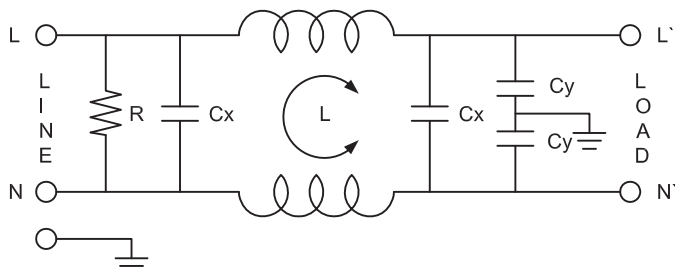
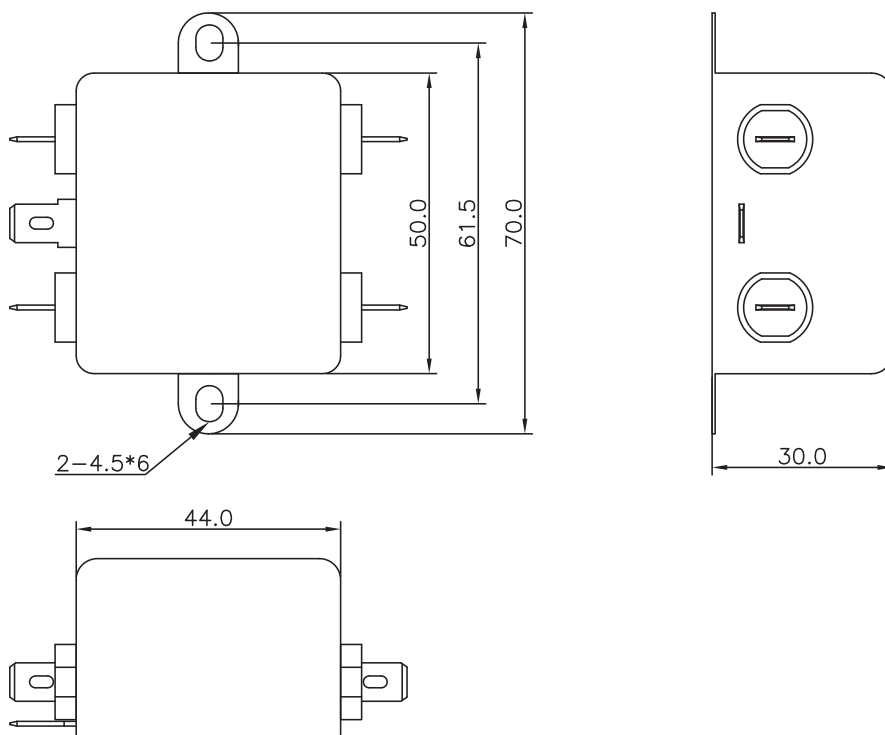
## 6 A 250 VAC

### SPECIFICATION:

Rated voltage	250 VAC
Rated current	6 A
Depth	70 mm
Dimensions H x W x D	30 x 44 x 70 mm
Leakage current	1 mA@ 250VAC/50Hz
Resistance	50 MΩ
Temperature range	-25 ... +85 °C
Termination type	Snap-In/Soldering Lugs

### Art. Nr.

**RND 165-00065**



L:2x8.0mH  
 Cx:0.47μF(X2)  
 Cy:4700pF(Y2)  
 R:680K ohm