

Power Inlet with Filter

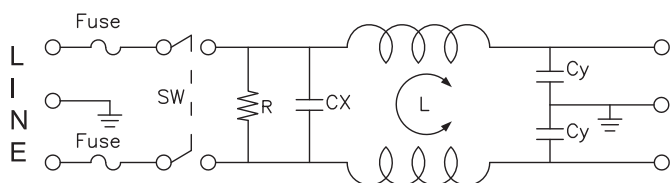
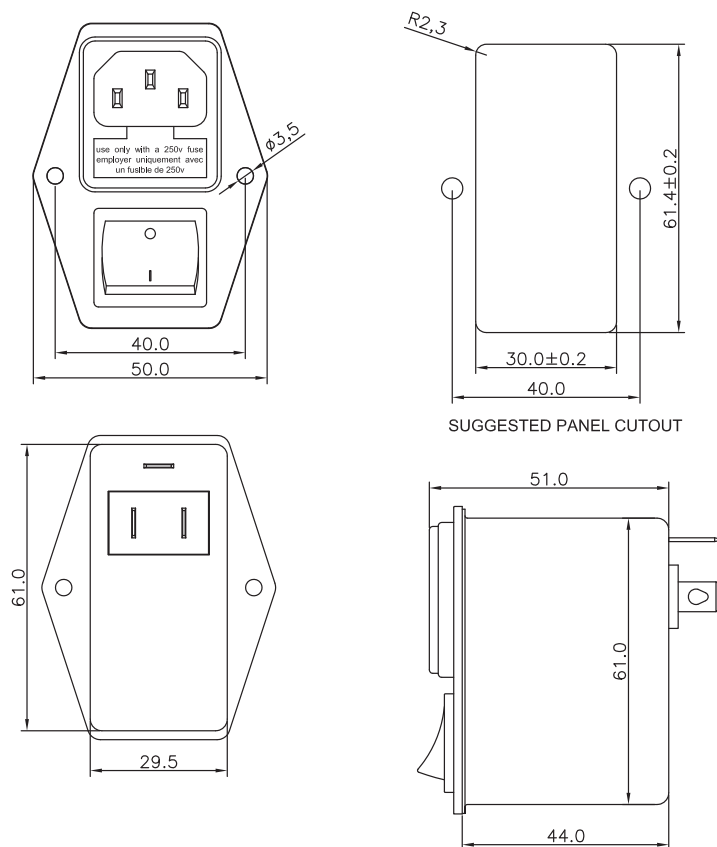
FEATURES:

- Compact structure
- Convenient installation
- High cost performance

SPECIFICATION:

Depth	51 mm
Height	61 mm
IEC-climate category	25/085/21
Leakage current	0.8 mA @ 250VAC/50Hz
Rated current	6 A
Rated voltage	250 VAC
Max. temperature	+85 °C
Min. Temperature	-25 °C
Resistance	50 MΩ
Width	50 mm
Termination type	Blade Terminal 6.3 x 0.8 mm
Inlet type	C14

Art. Nr.
RND 165-00036



L O A D

- L: 2x0.45mH
- Cx: 0.22μF(X2)
- Cy: 2200pF(Y2)
- R: 1M ohm