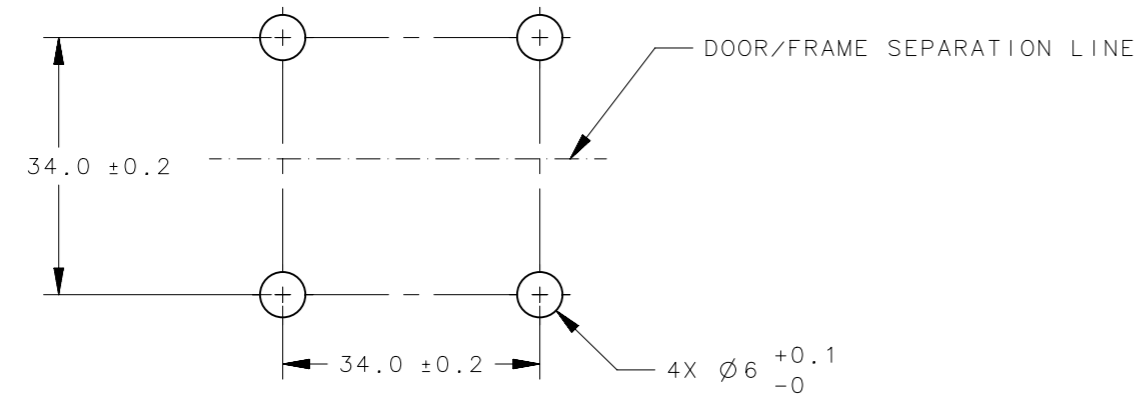
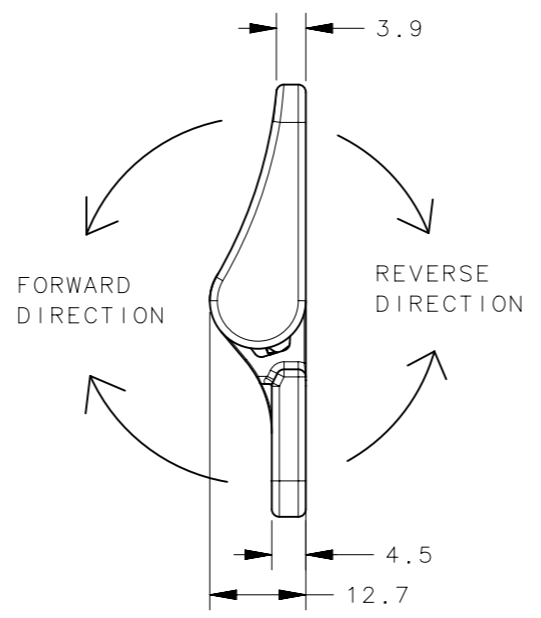
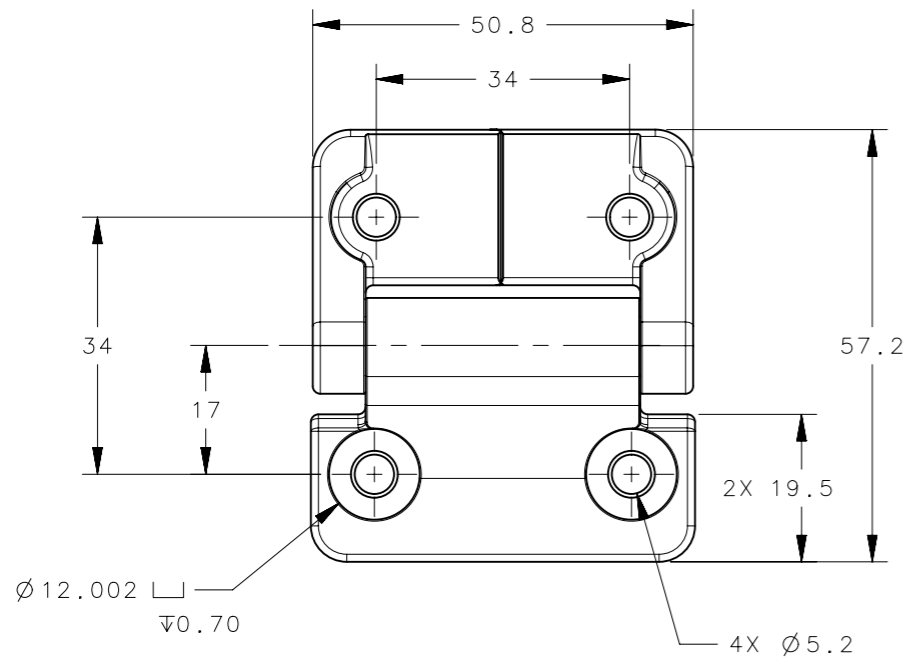
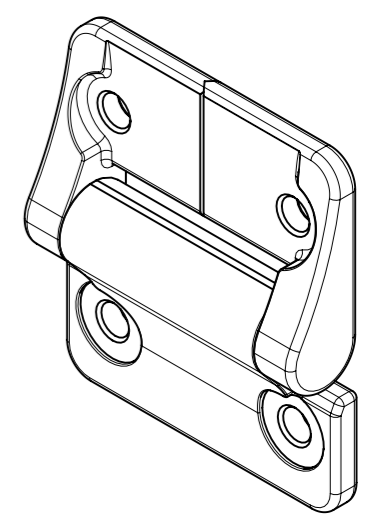


REVISION HISTORY			
REV	DATE	BY	DESCRIPTION
I	10JAN2019	YBS/VK	PRN: P2019-0089



PANEL PREPARATION



PART NUMBER	FORWARD TORQUE	REVERSE TORQUE
E6-10-408-XX	0.9 N-m (8.0 in-lbs)	
E6-10-416-XX	1.8 N-m (16.0 in-lbs)	
E6-10-420-XX	2.3 N-m (20.0 in-lbs)	
E6-10-430-XX	3.4 N-m (30.0 in-lbs)	
E6-10-420F-XX	2.3 N-m (20.0 in-lbs)	1.5 N-m (13.6 in-lbs)
E6-10-430F-XX	3.4 N-m (30.0 in-lbs)	2.3 N-m (20.4 in-lbs)
E6-10-440F-XX	4.5 N-m (40.0 in-lbs)	3.1 N-m (27.3 in-lbs)
E6-10-420R-XX	1.5 N-m (13.6 in-lbs)	2.3 N-m (20.0 in-lbs)
E6-10-430R-XX	2.3 N-m (20.4 in-lbs)	3.4 N-m (30.0 in-lbs)
E6-10-440R-XX	3.1 N-m (27.3 in-lbs)	4.5 N-m (40.0 in-lbs)

E6-10-4XXX-10	ASSEMBLY - COATED	WHITE POWDER
E6-10-4XXX-70	ASSEMBLY - COATED	SILVER POWDER
E6-10-4XXX-50	ASSEMBLY - COATED	BLACK POWDER
E6-10-4XXX-33	ASSEMBLY - AS CAST	NATURAL
PART NO.	DESCRIPTION	FINISH

- NOTES:
- PERFORMANCE TORQUE TOLERANCE ±20%
 - DESIGNED TO ACCEPT M5 OR No. 10 SCREW OR EQUIVALENT
 - MATERIAL AND FINISH:
HINGE LEAVES: DIE CAST ZINC, SEE TABLE FOR FINISH
SHAFT & PIN: STEEL
O-RINGS: BUNA-N RUBBER
BEARINGS: DIE CAST ZINC

CPB NUMBER 2018-0373	THIRD ANGLE PROJECTION	
SURFACE AREA	MILLIMETERS [IN]	
VOLUME	TOLERANCES UNLESS OTHERWISE NOTED	DESCRIPTION E6 400 SERIES HINGE ASSEMBLY
PROPRIETARY ITEM <small>EXCEPT FOR USES EXPRESSLY GRANTED IN WRITING, INFORMATION DISCLOSED HEREON IS CONFIDENTIAL AND ALL RIGHTS, PATENT AND OTHERWISE, ARE RESERVED BY SOUTHCO, INC.</small>	ALL DIMENSIONS WITHOUT TOLERANCES ARE FOR REFERENCE ONLY.	SIZE A3 SYSTEM NX DWG NO. J-E6-10-4-50
PER ASME Y14.5M-1994	DRAWN BY AS	DATE 18AUG2006 SCALE 1:1 SHEET 1 OF 1