

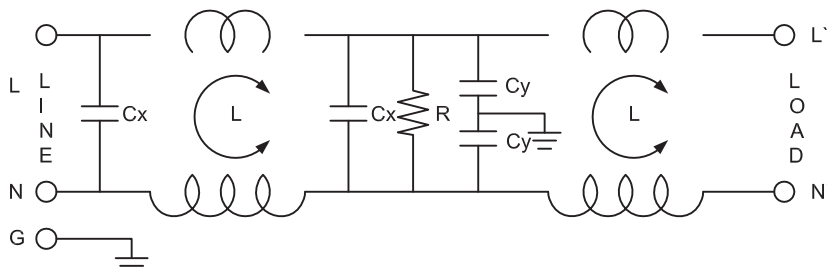
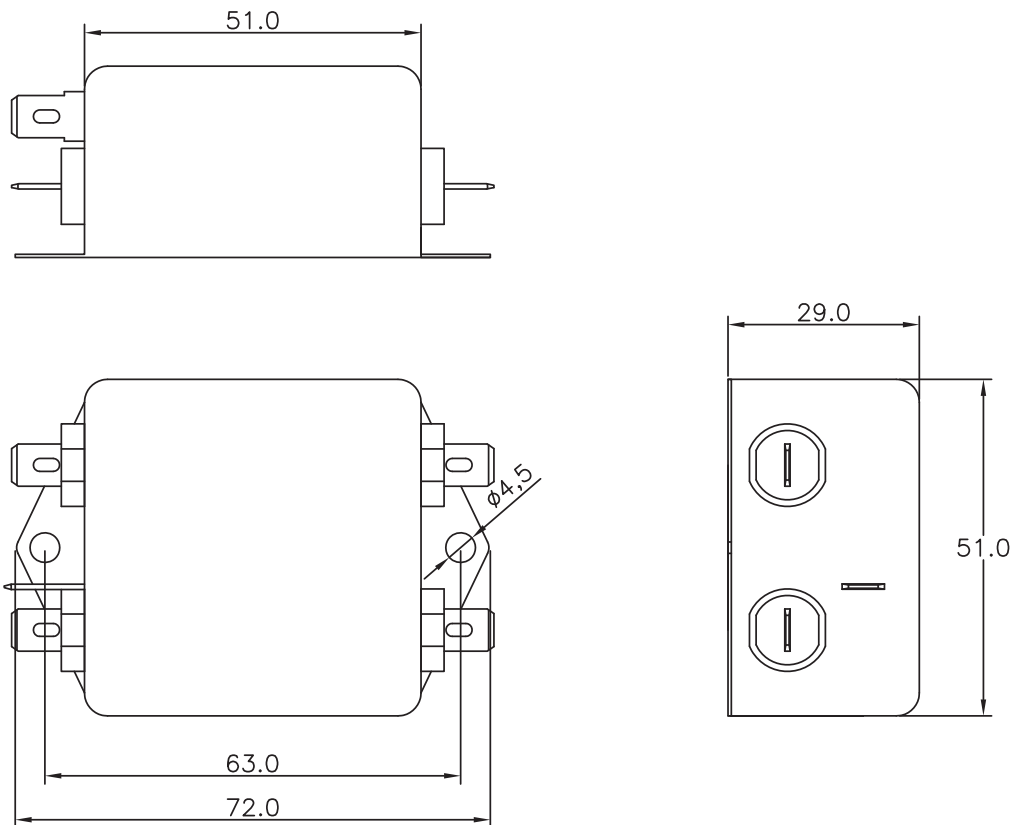
EMI Filter

SPECIFICATION:

| | |
|----------------------|------------------------|
| Length | 72 mm |
| Height | 51 mm |
| IEC-climate category | 25/085/21 |
| Leakage current | 1.0 mA @ 250 VAC/50 Hz |
| Rated current | 6 A |
| Rated voltage | 250 VAC |
| Max. temperature | +85 °C |
| Min. Temperature | -25 °C |
| Resistance | 50 MΩ |
| Width | 29 mm |

Art. Nr.

RND 165-00032



L:2x0.97mH
 Cx:0.22μF(X2)
 Cy:4700pF(Y2)
 R:1M ohm