

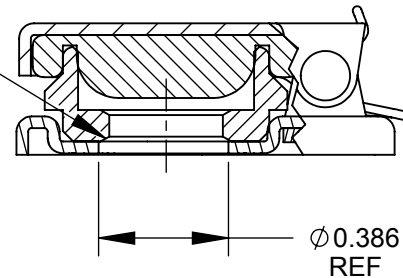
NOTES:

1. MATERIALS:
 COVER & BASE - STEEL
 FINISH MIL-F-14072 (SIG. - C)
 BASIC FINISH #P-211 TYPE I EXPOSURE
 FINAL FINISH PER TT-E-529 ENAMEL
 SYNTHETIC SEMI-GLOSS BLACK PER - A1

- GASKET - SYNTHETIC RUBBER
- TORSION SPRING - STAINLESS STEEL
- AXLE - COPPER ALLOY, NICKEL PLATED
- NUT - COPPER ALLOY, NICKEL PLATED

2. HEX NUT SHIPPED UNASSEMBLED
3. THIS PRODUCT IS RoHS COMPLIANT.

3/8-32 UNEF-2B
 THREAD



CUSTOMER DRAWING

					THIS DRAWING DESCRIBES A DESIGN CONSIDERED PROPRIETARY IN NATURE, DEVELOPED AND MANUFACTURED BY SWITCHCRAFT INC. AND IS RELEASED ON A CONFIDENTIAL BASIS FOR IDENTIFICATION PURPOSES ONLY.					
					SIZE	WIDTH	MULT	LBS/M	TEMPER	
					UNLESS OTHERWISE SPECIFIED			FINISH		
					1. ALL DIMENSIONS IN INCHES			MATERIAL		
					- TWO PLACE DECIMALS ±0.02			SPEC No.		
					- THREE PLACE DECIMALS ±0.005			FIRST USED ON		
								SCALE 1.75:1		
B	26771	05/13/11	JEB	TJK	DATE DRAWN	BY	CHKD	APVD	Switchcraft®	
A	25429	9-19-07	RF	TJK	9-19-06	RF	RF	TJK		
								SHEET 1 OF 1		
REV	ECO NUMBER	DATE	BY	APVD	NAME			PART No.	REV	
REVISIONS					DO NOT SCALE DRAWING			JAX COVER, RoHS		515X
										B