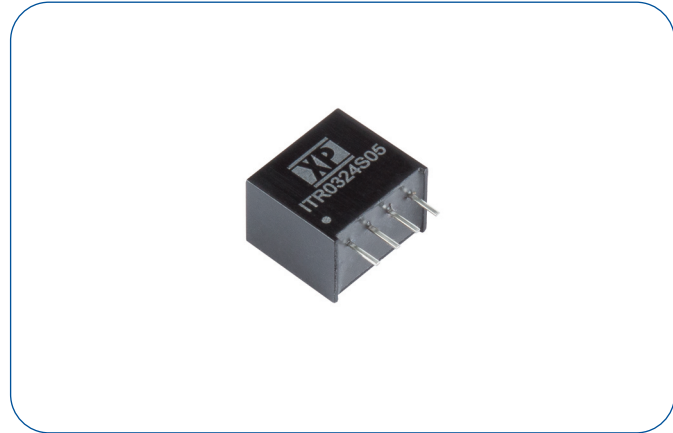


3 Watts

- Unregulated Single Outputs from 5 to 15VDC
- $\pm 10\%$ Input Range, Nominal 5V, 12V and 24VDC
- Compact SIP4 Package
- 3.0kVDC Input/Output Isolation
- High Efficiency
- Complies with EN55032 Class B
- -40°C to $+100^{\circ}\text{C}$ Operating Temperature
- Full Power Operating Temperature up to $+85^{\circ}\text{C}$
- MTBF >6.7 Mhrs (MIL-HDBK-217F, $+25^{\circ}\text{C}$ GB)
- 3 Year Warranty



Dimensions:

ITR03: 0.46 x 0.38 x 0.29" (11.8 x 9.66 x 7.5mm)

The ITR series offers a 3W compact isolated, cost effective DC-DC module with a practical range of input voltages and output voltages. Features include high efficiency, industrial temperature range and a robust encapsulated construction.

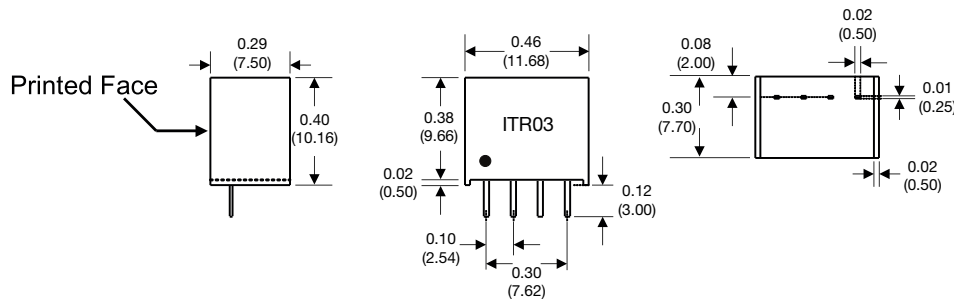
Models & Ratings

Input Voltage	Output Voltage	Output Current (Full Load)	Input Current ⁽¹⁾		Maximum Capacitive Load ⁽²⁾	Efficiency	Model Number
			No Load	Full Load			
5V (4.5 - 5.5V)	5V	600mA	50mA	723mA	3300 μF	83%	ITR0305S05
	9V	333mA	60mA	690mA	1200 μF	87%	ITR0305S09
	12V	250mA	55mA	682mA	1000 μF	88%	ITR0305S12
	15V	200mA	60mA	682mA	820 μF	88%	ITR0305S15
12V (10.8 - 13.2V)	5V	600mA	25mA	294mA	3300 μF	85%	ITR0312S05
	9V	333mA	30mA	281mA	1200 μF	89%	ITR0312S09
	12V	250mA	30mA	278mA	1000 μF	90%	ITR0312S12
	15V	200mA	30mA	275mA	820 μF	91%	ITR0312S15
24V (21.6 - 26.4V)	5V	600mA	15mA	147mA	3300 μF	85%	ITR0324S05
	9V	333mA	15mA	141mA	1200 μF	89%	ITR0324S09
	12V	250mA	15mA	139mA	1000 μF	90%	ITR0324S12
	15V	200mA	15mA	138mA	820 μF	91%	ITR0324S15

Notes

1. Input currents measured at nominal input voltage.
2. All specifications at $T_a = 25^{\circ}\text{C}$.
3. Standard tube quantity 40 pcs.

Mechanical Details



Pin Connections	
Pin	Single
1	-Vin
2	+Vin
3	-Vout
4	+Vout

Notes

1. All dimensions are in inches (mm)
2. Weight: 0.0048lbs (2.2 g) approx.
3. Pin diameter: 0.02 ± 0.002 (0.5 ± 0.05)
4. Pin pitch tolerance: ± 0.014 (± 0.35)
5. Case tolerance: ± 0.02 (± 0.5)

Input

Characteristic	Minimum	Typical	Maximum	Units	Notes & Conditions
Input Voltage Range	4.5	5	4.5	VDC	ITR0305 Series
	10.8	12	13.2		ITR0312 Series
	21.6	24	26.4		ITR0324 Series
Input Filter	Integrated capacitor.				
Input Reflected Ripple			20	mA pk-pk	Through 27µH inductor and 47µF capacitor
Input Surge			7	VDC for 100ms	ITR0305 Series
			15		ITR0312 Series
			28		ITR0324 Series

Output

Characteristic	Minimum	Typical	Maximum	Units	Notes & Conditions
Output Voltage	5		15	VDC	See Models and Ratings table
Initial Set Accuracy			±3	%	See load regulation curves
Minimum Load	10			%	Minimum load required for regulation
Line Regulation			±1.2	%	Per 1% change in input voltage
Load Regulation			±10	%	From 0 to 100% load
Transient Response Deviation			±5	% deviation	Recovery time 500µs, 25% load step change
Ripple & Noise			100	mV pk-pk	Single Output. 20MHz bandwidth. Measured using 0.1µF ceramic capacitor and 10µF electrolytic capacitor
Maximum Capacitive Load					See Models and Ratings table
Temperature Coefficient			0.02	%/°C	

General

Characteristic	Minimum	Typical	Maximum	Units	Notes & Conditions
Efficiency		88		%	See Models and Ratings table
Isolation: Input to Output	3000			VDC	Functional insulation. Working voltage 100Vrms
Switching Frequency	40		70	kHz	From 10% to full load
Isolation Resistance	10 ⁹			Ω	
Isolation Capacitance			65	pF	
Power Density			59	Win ³	
Mean Time Between Failure	6.7			Mhrs	MIL-HDBK-217F, +25°C GB
Case Material	Non conductive black plastic (UL94V-0 rated)				
Potting Material	Silicon (UL94V-0 rated)				
Pin Material	C5191R-H Solder-coated				
Solder Process	JEDEC J-STD 020D.1. 260°C max. 1.5mm from case 10s max.				
Weight		0.0048 (2.2)		lb (g)	

Environmental

Characteristic	Minimum	Typical	Maximum	Units	Notes & Conditions
Operating Temperature	-40		+100	°C	See derating curve
Storage Temperature	-55		+125	°C	
Case Temperature			+115	°C	
Humidity			95	%RH	Non-condensing
Cooling	Natural convection				

EMC: Emissions

Phenomenon	Standard	Test Level	Notes & Conditions
Conducted	EN55032	Class B	External components required. See application notes.
Radiated	EN55032	Class B	

Safety Approvals

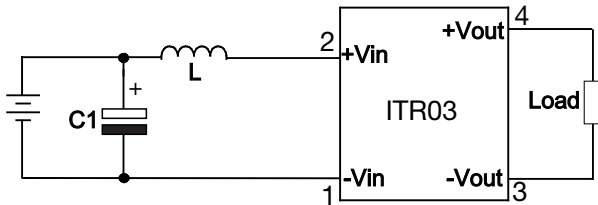
Safety Agency	Safety Standard	Notes & Conditions
CE	Meets all applicable directives	
UKCA	Meets all applicable legislation	

EMC: Immunity

Phenomenon	Standard	Test Level	Criteria	Notes & Conditions
ESD	EN61000-4-2	±8 kV	A	Air Discharge
Radiated	EN61000-4-3	10V/M	A	
EFT/Burst	EN61000-4-4	±2kV	A	External input capacitors required 100µF/250V
Surge	EN61000-4-5	±2kV	A	External input capacitors required 100µF/250V
Conducted	EN61000-4-6	10 Vrms	A	
Magnetic Fields	EN61000-4-8	100A/m	A	

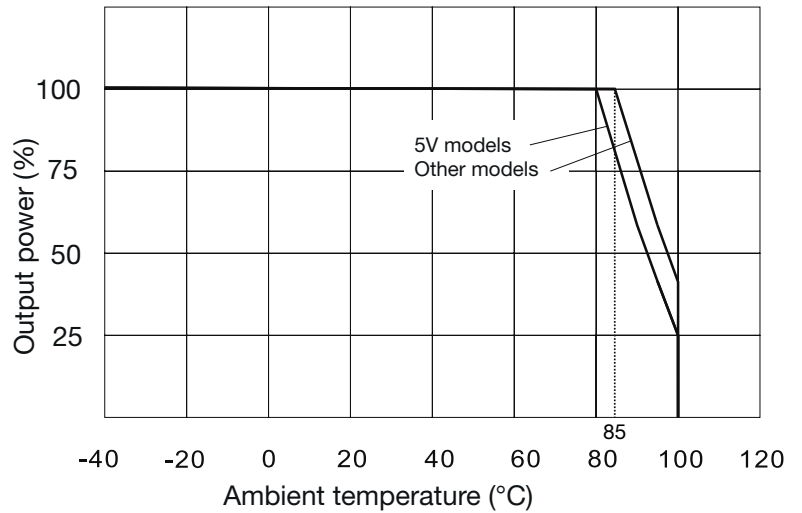
Application Notes

EMI Filter

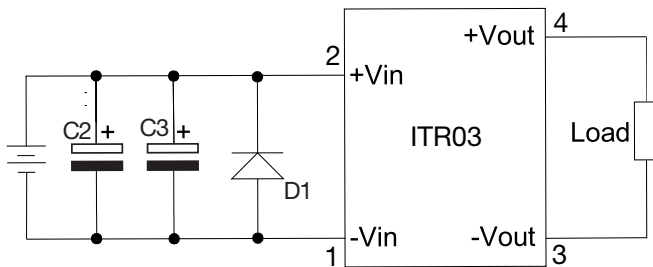


Model	C1	L
ITR0305	1206, 2.2µF, 50V	2.2µH
ITR0312	1206, 4.7µF, 50V	4.7µH
ITR0324		

Derating Curve



EFT/Surge Filter

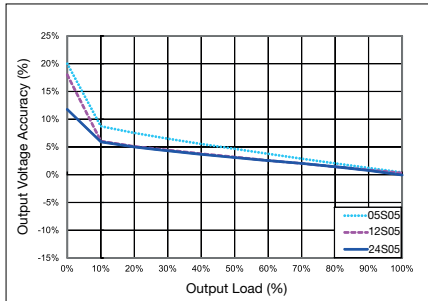


Model	C2 & C3	D1
ITR0305	100µF, 250V	SMDJ8.0A
ITR0312	100µF, 250V	SMDJ16A
ITR0324	100µF, 250V	SMDJ30A

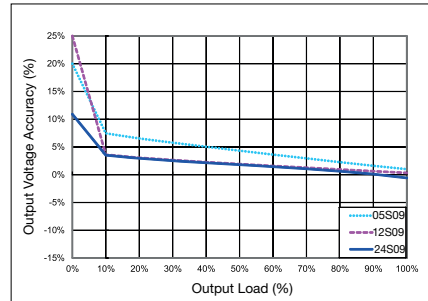
Application Notes

Voltage Regulation Curves

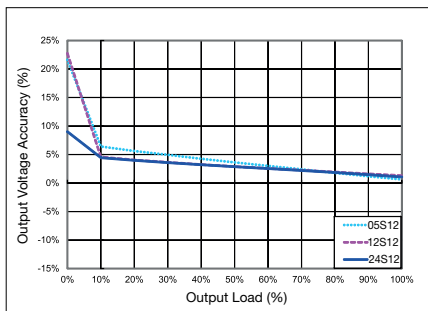
ITR03xxS05



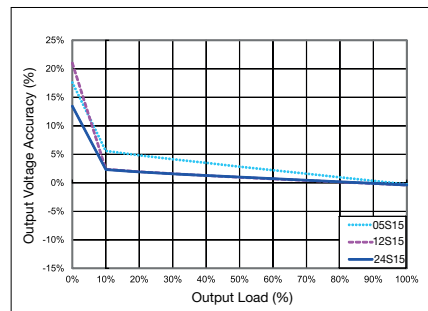
ITR03xxS09



ITR03xxS12

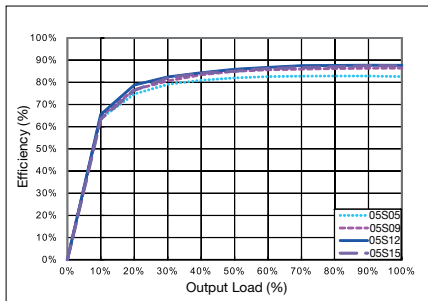


ITR03xxS15

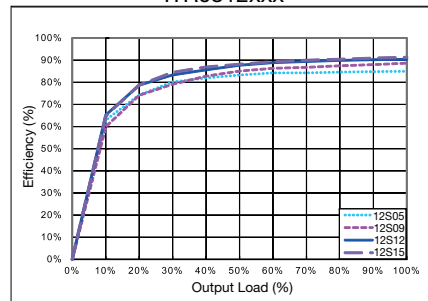


Efficiency Curves

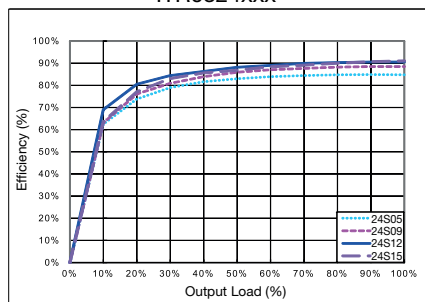
ITR0305xxx



ITR0312xxx



ITR0324xxx



Mouser Electronics

Authorized Distributor

Click to View Pricing, Inventory, Delivery & Lifecycle Information:

[XP Power:](#)

[ITR0305S05](#) [ITR0305S09](#) [ITR0305S12](#) [ITR0305S15](#) [ITR0312S05](#) [ITR0312S09](#) [ITR0312S12](#) [ITR0324S05](#)
[ITR0324S12](#)