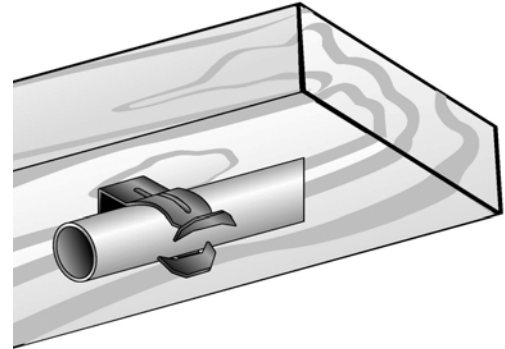
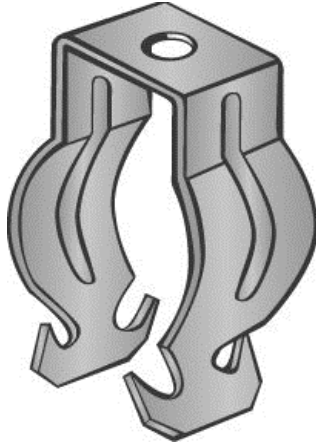


Part Number: P8P

Product Description: PUSH FIT CONDUIT CLIP FOR 1/2" CONDUIT WITH PLAIN MOUNTING HOLE



Material Specifications

Type: High Carbon Steel, Spring Tempered

Finish: Zinc Phosphate and Oil

Color: Black

Function Specifications

Compatible Wires and Cables

AC/MC CABLE (OD):
Drop Wire:
Plain Rod (in):

Threaded Rods and Bolts

Tapped Holes:
Clearance Holes (in): 1/4
Threaded Rod Size (in):

Compatible Conduit

EMT Size (in): 1/2
Rigid/IMC (in):

Compatible Flanges and Studs

Flange Size (in):
Metal Stud Size (ins):

Static Load Rating

Vertical (lbs): 25
Horizontal (lbs): 15

Other

Codes and Regulatory

Regulatory Certifications: -

Country of Origin: US

Packaging

General Packaging: Cardboard Box
Box Size: 7.5 X 5.5 X 4.5

Pieces per Package: 100
Other Box Features: Fold out handle

Document Information

Created By: DBLA
Checked By: DJW
Approved By: KLN

Customer Specification #: C11228
Revision Level: 01
ECN #: GAECN01482
Date: 12/10/2013

Mouser Electronics

Authorized Distributor

Click to View Pricing, Inventory, Delivery & Lifecycle Information:

[Panduit:](#)

[P8P](#)