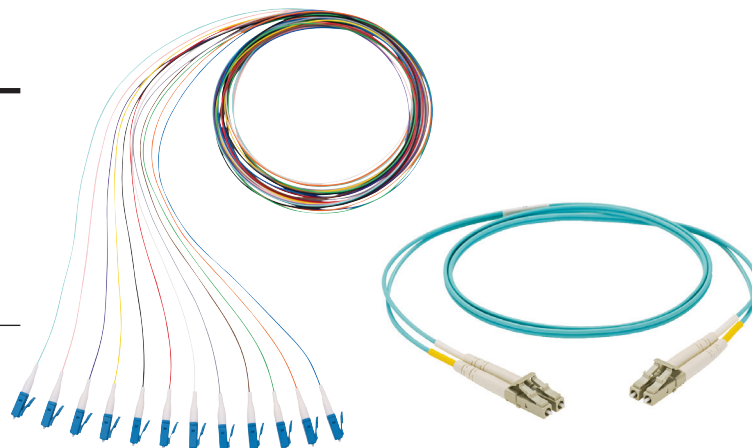


NetKey® Fiber Optic Patch Cords and Pigtails – OFNR and LSZH

technical information

NetKey® Fiber Optic Patch Cords include duplex LC, SC, and ST connectors on both ends and pigtails include simplex LC, SC, and ST on one end, and open (un-terminated) on the other end. Patch cords and pigtails meet requirements of TIA/EIA-568-C.3-1. The fiber connectors are FOCIS compliant or compatible and meet the requirements of TIA/EIA-455-21A. Quality control reference label provides lifetime traceability of test data.



application

Provide interconnect and cross-connect of applications in entrance facilities, telecommunications rooms, data centers, and at the desk. Support network applications to interconnect pre-terminated cassettes in main distribution, horizontal distribution, and equipment distribution areas. Riser rated patch cords support installations that require this flame rating in specific environments.

standards

Standards requirements: TIA/EIA 568-C.3-1 and ISO/IEC 61755-3-1 IEC-61754-7 (International)
TIA-604-2-A, -3-A, and -10-A
FOCIS -2, -3, and -10

construction

Fiber Size:	Pigtails:	900µm tight-buffered fiber
	Patch Cords:	1.6mm, 2.0mm, and 3.0mm duplex jacketed zip cord cable
Cable Jacket Ratings:	Riser (OFNR):	Per UL 1666 and c(UL) FT-4
	Low Smoke Zero Halogen (LSZH):	Per IEC 60332-1, IEC 60754-2, IEC 61034
Connector Types:	LC, SC, and ST	
Jacket Color:	OS2:	Yellow
	OM1:	Orange
	OM2:	Orange
	OM3:	Aqua
	OM4:	Aqua
Fiber Types:	Singlemode:	OS2 9/125µm
	Multimode:	OM1 62.5/125µm
		OM2 50/125µm
		OM3 50/125µm
		OM4 50/125µm
Ferrule Material:	Zirconia Ceramic	

optical properties

Insertion Loss:	All fiber types:	0.30dB max.
Return Loss:	OS2:	50dB min.
	OM1:	20dB min.
	OM2:	20dB min.
	OM3:	26dB min.
	OM4:	26dB min.

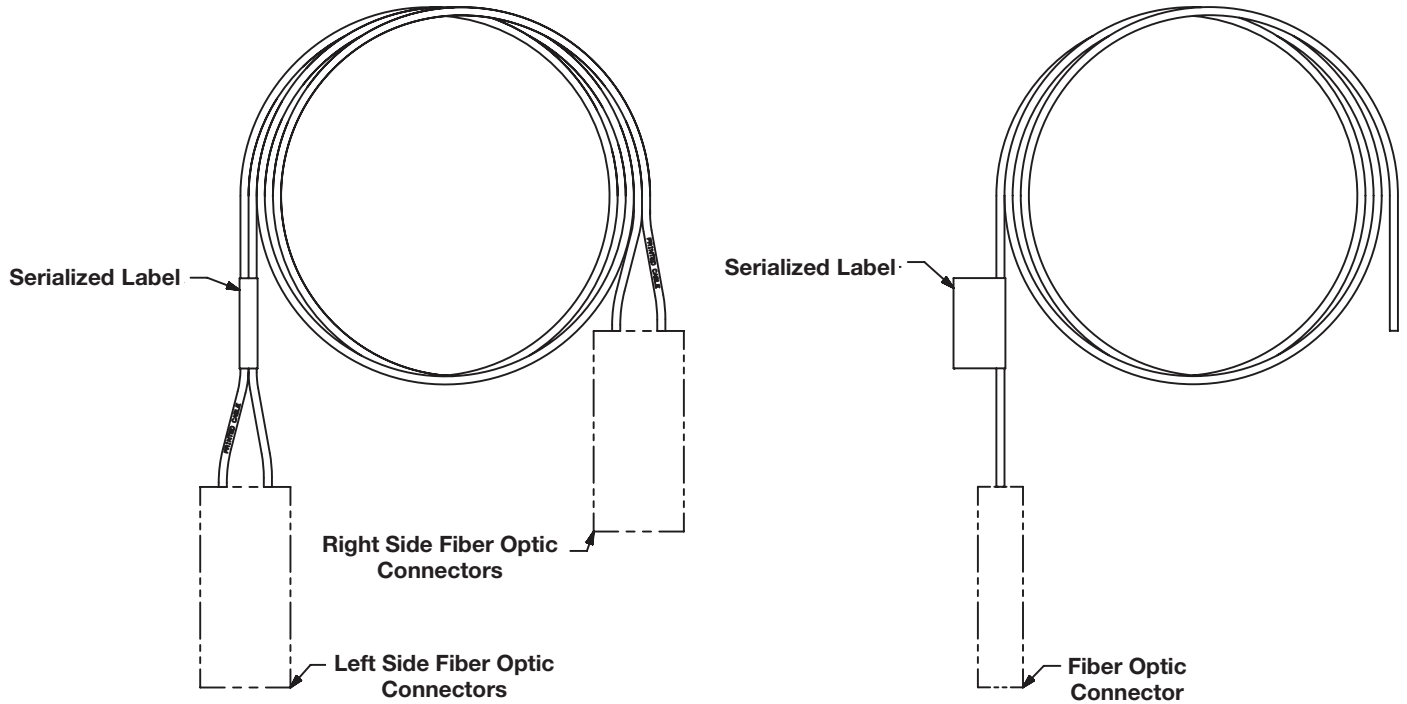
NetKey® Fiber Optic Patch Cords and Pigtails – OFNR and LSZH

NetKey® Patch Cords			
Part Number	Connector Type	Flame Rating	Lengths*(meters)
OM4 Multimode Duplex Patch Cords			
NKFPZ22RLLSM001	LC-LC	OFNR	1-10m, 15m, 20m
NKFPZ22LLLSM001	LC-LC	LSZH	1-10m, 15m, 20m
OM3 Multimode Duplex Patch Cords			
NKFPX2ERLLSM001	LC-LC	OFNR	1 - 15m, 20,25,30,35,40,45,50m
NKFPX2ERLSSM001	LC-SC	OFNR	1 - 15m, 20,25,30,35,40,45,50m
NKFPX23RSSSM001	SC-SC	OFNR	1 - 5m, 10,15,20m
NKFPX23R22SM001	ST-ST	OFNR	1 - 5m, 10,15,20m
NKFPX2ELLLSM001	LC-LC	LSZH	1 - 15m, 20,25,30,35,40,45,50m
NKFPX2ELLSSM001	LC-SC	LSZH	1 - 15m, 20,25,30,35,40,45,50m
NKFPX23LSSSM001	SC-SC	LSZH	1 - 5m, 10,15,20m
NKFPX23L22SM001	ST-ST	LSZH	1 - 5m, 10,15,20m
OM2 Multimode Duplex Patch Cords			
NKFP52ERLLSM001	LC-LC	OFNR	1 - 5m, 10,15,20m
NKFP52ERLSSM001	LC-SC	OFNR	1 - 5m, 10,15,20m
NKFP523RSSSM001	SC-SC	OFNR	1 - 5m, 10,15,20m
NKFP523R22SM001	ST-ST	OFNR	1 - 5m, 10,15,20m
NKFP52ELLLSM001	LC-LC	LSZH	1 - 5m, 10,15,20m
NKFP52ELLSSM001	LC-SC	LSZH	1 - 5m, 10,15,20m
NKFP523LSSSM001	SC-SC	LSZH	1 - 5m, 10,15,20m
NKFP523L22SM001	ST-ST	LSZH	1 - 5m, 10,15,20m
OM1 Multimode Duplex Patch Cords			
NKFP62ERLLSM001	LC-LC	OFNR	1 - 5m, 10,15,20m
NKFP62ERLSSM001	LC-SC	OFNR	1 - 5m, 10,15,20m
NKFP623RSSSM001	SC-SC	OFNR	1 - 5m, 10,15,20m
NKFP623R22SM001	ST-ST	OFNR	1 - 5m, 10,15,20m
NKFP62ELLLSM001	LC-LC	LSZH	1 - 5m, 10,15,20m
NKFP62ELLSSM001	LC-SC	LSZH	1 - 5m, 10,15,20m
NKFP623LSSSM001	SC-SC	LSZH	1 - 5m, 10,15,20m
NKFP623L22SM001	ST-ST	LSZH	1 - 5m, 10,15,20m
OS2 Singlemode Duplex Patch Cords			
NKFP92ERLLSM001	LC-LC	OFNR	1 - 15m, 20,25,30,35,40,45,50m
NKFP92ERLSSM001	LC-SC	OFNR	1 - 15m, 20,25,30,35,40,45,50m
NKFP923RSSSM001	SC-SC	OFNR	1 - 5m, 10,15,20m
NKFP923R22SM001	ST-ST	OFNR	1 - 5m, 10,15,20m
NKFP92ELLLSM001	LC-LC	LSZH	1 - 15m, 20,25,30,35,40,45,50m
NKFP92ELLSSM001	LC-SC	LSZH	1 - 15m, 20,25,30,35,40,45,50m
NKFP923LSSSM001	SC-SC	LSZH	1 - 5m, 10,15,20m
NKFP923L22SM001	ST-ST	LSZH	1 - 5m, 10,15,20m

NetKey® Pigtails		
Part Number	Connector Type	Lengths*(meters)
OM4 Pigtails		
NKFPZ1BN1NNM001	LC	1m & 2m
OM3 Pigtails		
NKFPX1BN1NNM001	LC	1m & 2m
NKFPX1BN2NNM001	ST	1m
NKFPX1BN3NNM001	SC	1m
OM2 Pigtails		
NKFP51BN1NNM001	LC	1m
NKFP51BN2NNM001	ST	1m
NKFP51BN3NNM001	SC	1m
OM1 Pigtails		
NKFP61BN1NNM001	LC	1m
NKFP61BN2NNM001	ST	1m
NKFP61BN3NNM001	SC	1m
OS2 Pigtails		
NKFP91BN1NNM001	LC	1m & 2m
NKFP91BN2NNM001	ST	1m
NKFP91BN3NNM001	SC	1m
OM4, OM3 and OS2 Pigtails Kits (12-color kits)		
NKFPZ1BN1NKM001	LC	1m
NKFPX1BN1NKM001	LC	1m
NKFP91BN1NKM001	LC	1m

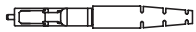
*Replace last two digits of part number with desired length. Lengths above 20 meters are only available in multiples of 5

NetKey® Fiber Optic Patch Cords and Pigtails – OFNR and LSZH

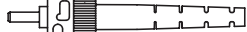


Netkey Patch Cord

Netkey Pigtail



Simplex LC



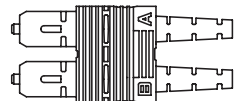
ST



Simplex SC



Duplex LC



Duplex SC

WORLDWIDE SUBSIDIARIES AND SALES OFFICES

PANDUIT CANADA
Phone: 800.777.3300

PANDUIT EUROPE LTD.
London, UK
cs-emea@panduit.com
Phone: 44.20.8601.7200

PANDUIT SINGAPORE PTE. LTD.
Republic of Singapore
cs-ap@panduit.com
Phone: 65.6305.7575

PANDUIT JAPAN
Tokyo, Japan
cs-japan@panduit.com
Phone: 81.3.6863.6000

PANDUIT LATIN AMERICA
Guadalajara, Mexico
cs-la@panduit.com
Phone: 52.33.3777.6000

PANDUIT AUSTRALIA PTY. LTD.
Victoria, Australia
cs-aus@panduit.com
Phone: 61.3.9794.9020

For a copy of Panduit product warranties, log on to www.panduit.com/warranty

For more information

Visit us at www.panduit.com

Contact Customer Service by email: cs@panduit.com
or by phone: 800.777.3300



©2017 Panduit Corp.
ALL RIGHTS RESERVED.
NKDS51--WW-ENG
4/2017

Mouser Electronics

Authorized Distributor

Click to View Pricing, Inventory, Delivery & Lifecycle Information:

Panduit:

[NKFPX1BN3NNM001](#) [NKFPX1BN1NNM001](#) [NKFP91BN1NKM001](#) [NKFPX2ERLLSM001](#) [NKFPX2ERLLSM002](#)
[NKFP523R22SM001](#) [NKFP523LSSSM002](#) [NKFP523R22SM002](#) [NKFP52ELLSSM003](#) [NKFP523L22SM010](#)
[NKFP52ELLSSM010](#) [NKFP623L22SM005](#) [NKFP623L22SM001](#) [NKFP623R22SM005](#) [NKFP623RSSSM002](#)
[NKFP62ELLSSM015](#) [NKFP62ERLLSM003](#) [NKFP923L22SM015](#) [NKFP923R22SM004](#) [NKFP92ELLSSM020](#)
[NKFP623L22SM003](#) [NKFP923R22SM005](#) [NKFP923RSSSM003](#) [NKFP92ERLSSM002](#) [NKFPX23LSSSM020](#)
[NKFP62ELLSSM020](#) [NKFP923L22SM005](#) [NKFPX23RSSSM002](#) [NKFPX2ERLSSM008](#) [NKFPX2ERLSSM010](#)
[NKFPX23R22SM020](#) [NKFPX2ELLSSM003](#) [NKFP62ERLSSM002](#) [NKFP923L22SM010](#) [NKFPX23L22SM020](#)
[NKFPX2ELLSSM015](#) [NKFP62ELLSSM003](#) [NKFP62ELLSSM015](#) [NKFP62ERLLSM015](#) [NKFP91BN2NNM001](#)
[NKFP923L22SM020](#) [NKFP92ERLLSM020](#) [NKFPX23LSSSM004](#) [NKFPX23R22SM015](#) [NKFPX2ELLSSM004](#)
[NKFPX23LSSSM010](#) [NKFPX2ERLLSM015](#) [NKFPX2ERLSSM015](#) [NKFPX2ERLSSM012](#) [NKFPX2ERLSSM050](#)
[NKFP923LSSSM020](#) [NKFP92ELLSSM002](#) [NKFPX23RSSSM010](#) [NKFPX2ELLSSM010](#) [NKFPX2ERLSSM045](#)
[NKFPX23RSSSM003](#) [NKFPX2ERLSSM001](#) [NKFPX2ELLSSM020](#) [NKFPX2ELLSSM003](#) [NKFPX2ELLSSM010](#)
[NKFPX2ERLLSM020](#) [NKFPX2ERLSSM011](#) [NKFPX2ERLSSM040](#) [NKFPX23LSSSM001](#) [NKFPX2ERLSSM013](#)
[NKFPX23R22SM001](#) [NKFP923LSSSM004](#) [NKFP523RSSSM002](#) [NKFP523RSSSM001](#) [NKFP623RSSSM005](#)
[NKFPX2ERLSSM020](#) [NKFP52ERLLSM005](#) [NKFP62ELLSSM001](#) [NKFP923R22SM010](#) [NKFP52ELLSSM002](#)
[NKFP62ERLSSM010](#) [NKFPX2ELLSSM004](#) [NKFPX2ERLSSM030](#) [NKFPX2ERLSSM025](#) [NKFP92ELLSSM005](#)
[NKFP923LSSSM003](#) [NKFP52ELLSSM005](#) [NKFP92ELLSSM004](#) [NKFP923L22SM003](#) [NKFP923LSSSM015](#)
[NKFP623LSSSM001](#) [NKFP92ERLLSM005](#) [NKFP62ERLLSM001](#) [NKFP623L22SM015](#) [NKFP92ERLLSM010](#)
[NKFP62ELLSSM020](#) [NKFP52ERLLSM003](#) [NKFP62ELLSSM005](#) [NKFP623R22SM001](#) [NKFP62ELLSSM003](#)
[NKFPX2ELLSSM015](#) [NKFP523RSSSM005](#) [NKFP523L22SM003](#) [NKFP52ERLSSM001](#) [NKFPX23LSSSM015](#)