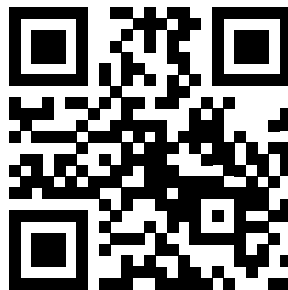


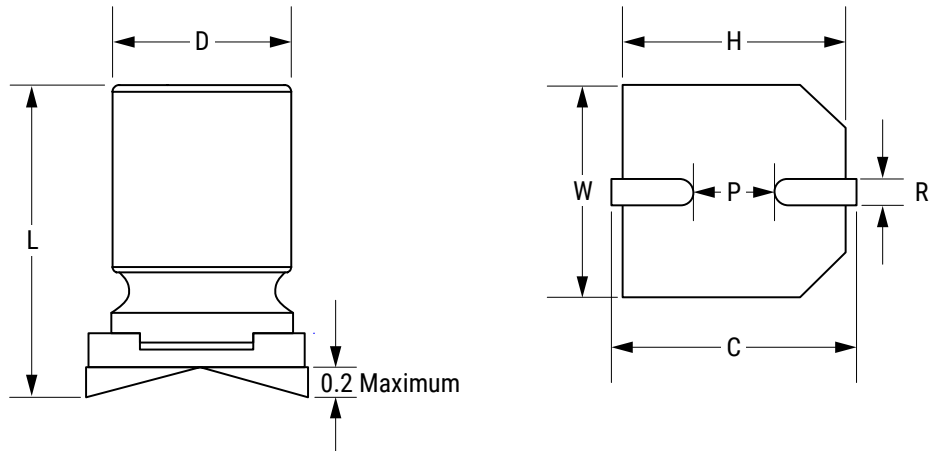
Sample Kit Contents

KEMET Part Number	VDC	VDC Surge Voltage	Rated Capacitance 120 Hz 20°C (µF)	Case Size D x L (mm)	ESR 100 kHz 20°C (mΩ)	RC 100 kHz 105°C (mA)	LC 20°C 2 Minutes (µA)	Quantity
A767KN476M1VLAE031	35	40.2	47	8 x 9.7	31	1,900	329	5
A767MU107M1VLAE029	35	40.2	100	10 x 12.6	29	2500	700	5
A767MU187M1VLAE028	35	40.2	180	10 x 12.6	28	2600	1260	5
A767MU227M1VLAE028	35	40.2	220	10 x 12.6	28	2600	1540	5
A767KN226M1HLAE050	50	57.5	22	8 x 9.7	50	1500	300	5
A767KN336M1HLAE045	50	57.5	33	8 x 9.7	45	1800	330	5
A767KN476M1HLAE029	50	57.5	47	8 x 9.7	29	3300	470	5
A767KN566M1HLAE029	50	57.5	56	8 x 9.7	29	2800	560	5
A767KN226M1JLAE045	63	72	22	8 x 9.7	45	1800	300	5
A767KN336M1JLAE042	63	72	33	8 x 9.7	42	1950	415	5
A767KS476M1JLAE036	63	72	47	8 x 12	36	2200	592	5
A767KN226M1KLAE045	80	92	22	8 x 9.7	45	2100	352	5
A767MU476M1KLAE040	80	92	47	10 x 12.6	40	2500	752	5
A767KS106M2ALAE045	100	115	10	8 x 12	45	1700	300	5
A767MU226M2ALAE038	100	115	22	10 x 12.6	38	2250	440	5



www.kemet.com/A767

Dimensions – Millimeters



Size Code	D		L		W		H		C		R	P
	Nominal	Tolerance	Nominal	Tolerance	Nominal	Tolerance	Nominal	Tolerance	Nominal	Tolerance	Nominal	Nominal
EB	6.3	±0.5	5.7	±0.3	6.6	±0.2	6.6	±0.2	7.3	±0.2	0.5 - 0.9	2.1
KN	8	±0.5	9.7	±0.3	8.3	±0.2	8.3	±0.2	9.0	±0.2	0.8 - 1.1	3.2
KU	8	±0.5	12.6	±0.3	8.3	±0.2	8.3	±0.2	9.0	±0.2	0.8 - 1.1	3.2
MU	10	±0.5	12.6	±0.3	10.3	±0.2	10.3	±0.2	11.0	±0.2	0.8 - 1.1	4.6

Mouser Electronics

Authorized Distributor

Click to View Pricing, Inventory, Delivery & Lifecycle Information:

[KEMET:](#)

[ALU ENG KIT 06](#)