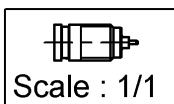
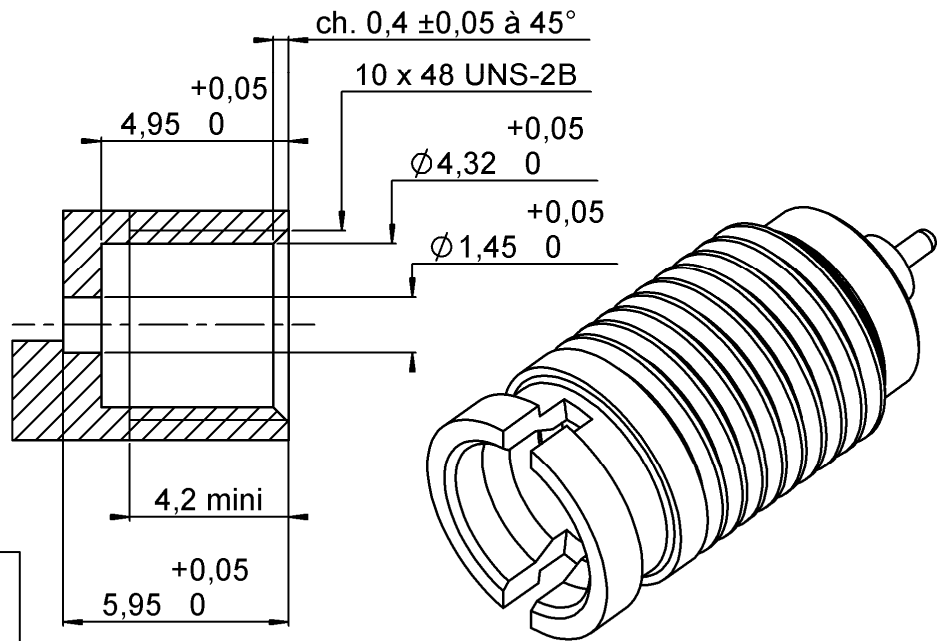
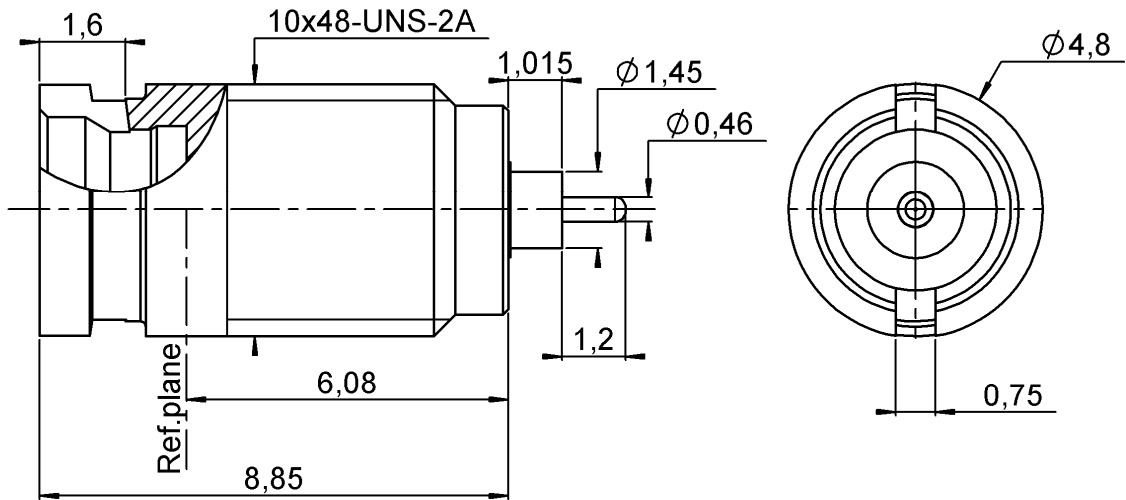
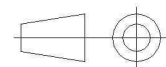


PAGE 1/3	ISSUE 1428A	SERIES SMP LOCK	PART NUMBER R222L10001
----------	-------------	-----------------	------------------------



All dimensions are in mm.



COMPONENTS	MATERIALS	PLATING (µm)
Body	STAINLESS STEEL	PASSIVATED.
Center contact	BERYLLIUM COPPER	GOLD 1.27 OVER NICKEL 1.27
Outer contact	-	-
Insulator	PTFE	-
Gasket	-	-
Others parts	-	-
-	-	-
-	-	-

PAGE 2/3	ISSUE 1428A	SERIES SMP LOCK	PART NUMBER R222L10001
----------	--------------------	------------------------	-------------------------------

PACKAGING

Standard	Unit	Other
100	Contact us	Contact us

ELECTRICAL CHARACTERISTICS

Impedance		50	Ω	
Frequency		0-26.5	GHz	
VSWR	1.35	+	0,0000	x F(GHz) Maxi
Insertion loss			0.1	√F(GHz) dB Maxi
RF leakage	-	(80*	- F(GHz) dB Maxi
Voltage rating			335	Veff Maxi
Dielectric withstanding voltage			500	Veff mini
Insulation resistance			5000	MΩ mini

ENVIRONMENTAL

Operating temperature	-65/+165	°C
Hermetic seal	NA	Atm.cm3/s
Panel leakage	NA	

MECHANICAL CHARACTERISTICS

Center contact retention				
Axial force – Mating End		6.7	N mini	
Axial force – Opposite end		6.7	N mini	
Torque		NA	N.cm mini	
Recommended torque				
Mating		NA	N.cm	
Panel nut		90	N.cm	
Mating life		500	Cycles mini	
Weight		0,7700	g	

SPECIFICATION

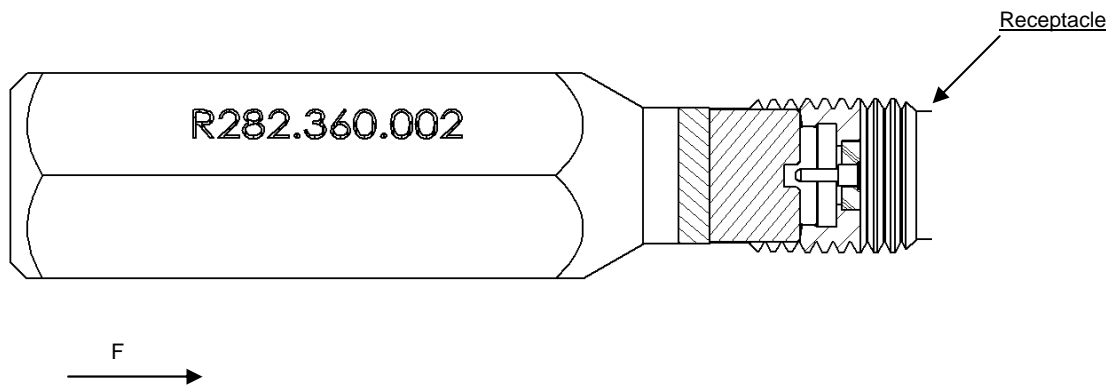
OTHER CHARACTERISTICS

Assembly instruction:

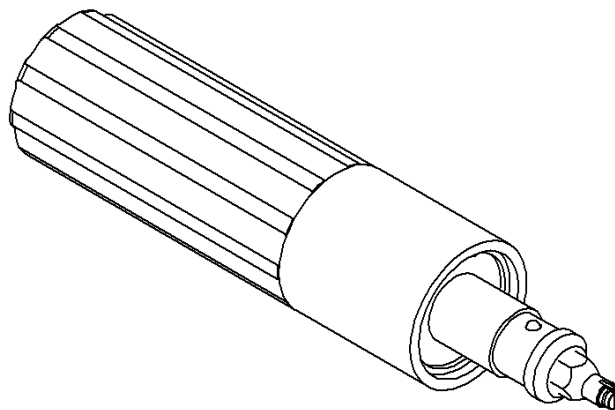
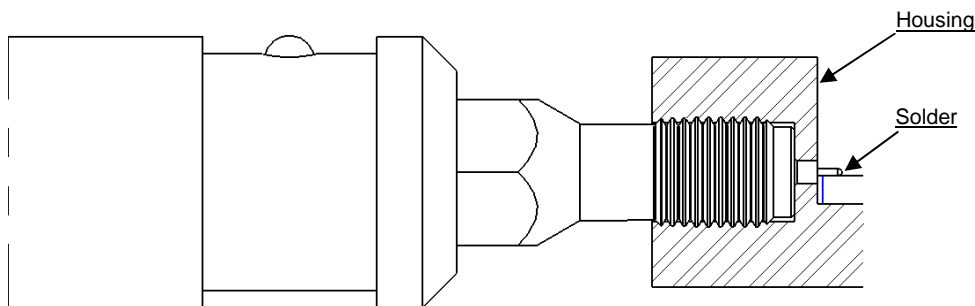
Others:
*** up to 18 GHz**

ADDITIONAL INFORMATIONS
MOUNTING AND REPLEACEMENT INSTRUCTIONS

1. Connector must be screwed or unscrewed with adapted torque driver R282.339.002 (recommended coupling torque : 90 Ncm)
Screx driver : R282.360.002
2. Slide on the connector in F direction until it stops against the tool.



3. Screw the whole into the housing until activation of the torque driver.
4. Withdraw the tool and solder the center contact



Mouser Electronics

Authorized Distributor

Click to View Pricing, Inventory, Delivery & Lifecycle Information:

[Radial:](#)

[R222L10001](#)