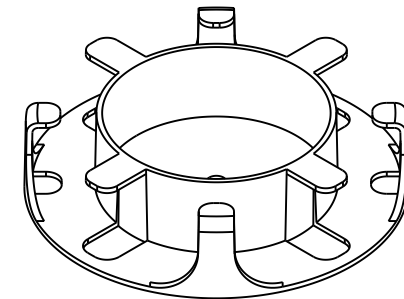
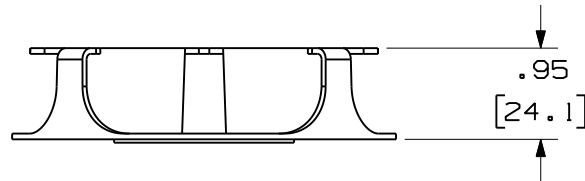
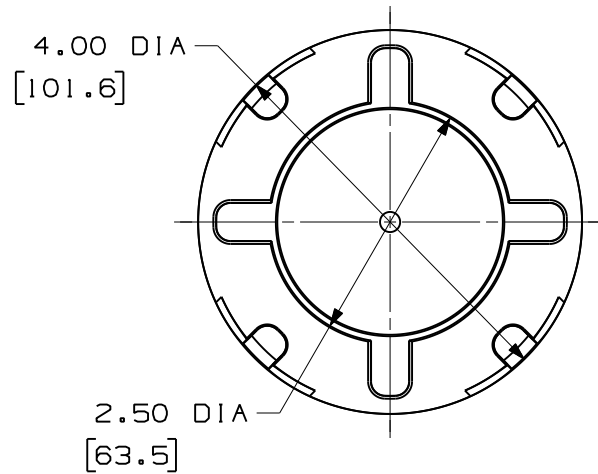


THIS COPY IS PROVIDED ON A RESTRICTED BASIS AND IS NOT TO BE USED IN ANY WAY DETRIMENTAL TO THE INTERESTS OF PANDUIT CORP.


PANDUIT P/N	WEIGHT
FMS1	0.06 LBS/EACH 27 g/EACH



NOTES:

- VISIT OUR ON-LINE CATALOG AT [WWW.PANDUIT.COM](http://WWW.PANDUIT.COM) FOR A CURRENT LIST OF PARTS APPLICABLE WITH THIS PRODUCT.
- COMPONENTS:  
2 - SPOOLS WITH DOUBLE SIDED TAPE
- DIMENSIONS IN PARENTHESIS ARE METRIC.

REV	DATE	BY	CHK	DESCRIPTION	ECN	R	CUST	SUP	OTH
01	12-15-10	EFK		RELEASED TO PRODUCTION					

FIBER MANAGEMENT SLACK SPOOL CUSTOMER DRAWING	
	<b>PANDUIT</b> ™ CORP. TINLEY PARK, ILL 60477
ALL DIMENSIONS ARE GIVEN IN INCHES, UNLESS OTHERWISE SPECIFIED. DIMENSIONAL TOLERANCES ARE: (.X) ±.03   (.XXX) ±.010   (.3) ±.01 (.XX) ±.03   (.8) ANGLES	DRAWING FILENAME V10223CV_DC/02B SCALE 1/2 PART NO. FMS1 DRAWING NO. 10223-16 SIZE A
THIRD ANGLE PROJECTION	A.B.S.
DRAWN BY RVLE DATE 02-24-05 CHK'D	REVIEW DRAWING NUMBERS

# Mouser Electronics

Authorized Distributor

Click to View Pricing, Inventory, Delivery & Lifecycle Information:

[Panduit:](#)

[FMS1](#)