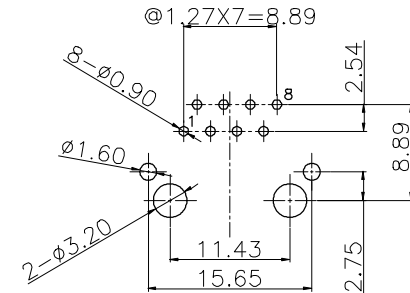
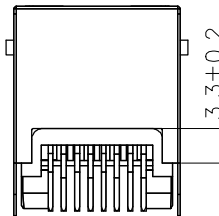
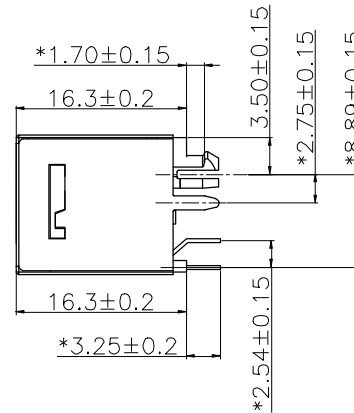
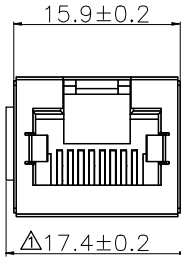
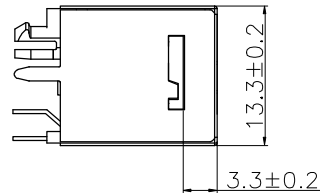
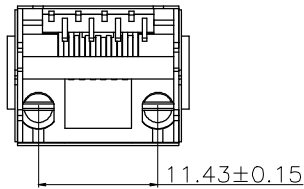
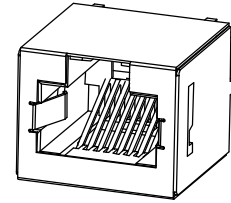
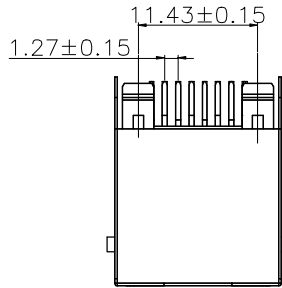


RoHS

THIS IS A RoHS
COMPLIANT
COMPONENT/
PRODUCT.



PC Board Layout
Component Side Shown

NOTES:

ELECTRICAL:

1. VOLTAGE RATING : 125 VAC RMS.
2. CURRENT RATING : 1.5 AMP.
3. CONTACT RESISTANCE : 30 MILLIOHMS MAX.
4. INSULATION RESISTANCE: 1000 MEGOHMS MIN @ 500 VDC.
5. DIELECTRIC STRENGTH : 1000 VAC RMS 60Hz, 1MIN.
6. OPERATING : 750 CYCLES MIN.

MECHANICAL:

1. HOUSING MATERIAL : HIGH TEMP. UL94V-0 BK.
2. INSERT MATERIAL : HIGH TEMP. UL94V-0 BK.
3. CONTACT MATERIAL : PHOSPHOR BRONZE 0.35 mm THICKNESS
4. SHELL : BRONZE t=0.25 mm
5. PCB RETENTION PRE-SOLDER : 1 LB MIN.
6. PCB RETENTION POST-SOLDER: 10 LBS MIN.

ENVIRONMENTAL:

1. STORAGE : -40°C TO +85°C.
 2. OPERATION: -40°C TO +85°C.
 3. WAVE SOLDERING TEMPERATURE: 255°C~265°C(5~10 SECONDS)
- MATES WITH MODULAR PLUG CONFORMING TO TIA-1096-A.

ORDERING INFORMATION:

PART NUMBER	PRODUCT CODE	CONFIGURATION
325I-0015-02	RJJS-88-A23-EIV-096	6U" GOLD PLATING, WITH PANEL STOP
325I-0015-03	RJJS-88-A42-EIV-096	30U" GOLD PLATING, WITHOUT PANEL STOP
325I-0015-04	RJJS-88-A43-EIV-096	30U" GOLD PLATING, WITH PANEL STOP

UL RECOGNIZED - FILE #E465899

Δ X2		ADD NEW P/N.	DORIS	020416'
Δ X0	0066000	NEW DESIGN	DORIS	122115'
MARK	ECN-NO.	REVISION RECORD	DRAWN	DATE
		UNLESS OTHERWISE SPECIFIED TOLERANCE	SCALE	CHECKED
		Dimension Range Tolerance	2.5/1	
		X.X ±0.20	UNIT	APPROVED
		X.XX ±0.15	mm	
		X.XXX ±0.10	SIZE	
		ANGLE ±5°	A3	SHEET 1/1
Material/Plated/Notes		NAME		
SEE NOTE		RJ45 TOP ENTRY , FTP WIDTH:15.9		
Tooling No.		PART NO.	REV.	
		DOC. NO.	1	