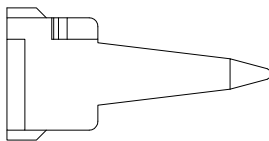
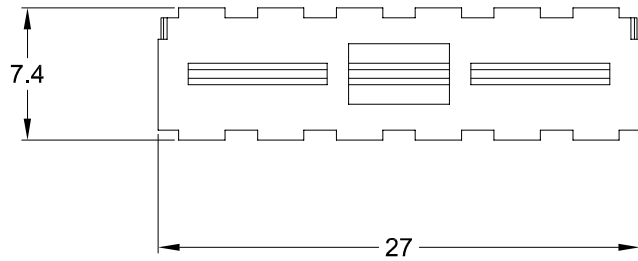
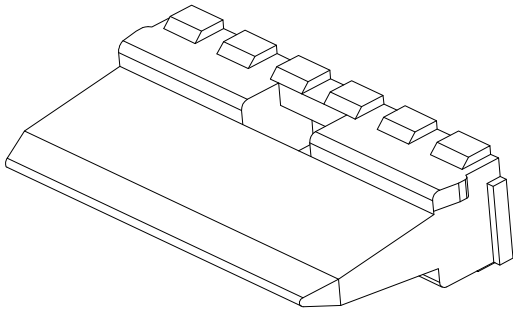
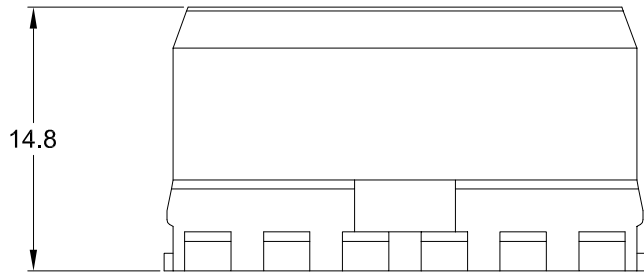


REVISIONS					
REV	ECO	DESCRIPTION	DATE	BY	APPR
A3		RELEASE NEW DWG FORMAT	18/SEP/13	DRP	



NOTES: UNLESS OTHERWISE SPECIFIED

1. MATERIAL: THERMOPLASTIC; COLOR: GREEN
2. RoHS COMPLIANT
3. CAVITIES: 12
4. KEYED: N/A
5. USE WITH CONNECTORS AT04-12P\*  
(\* = MODIFICATIONS AND/OR COLORS)
6. ALL DIMENSIONS ARE FOR REFERENCE USE ONLY.

QUANTITY	AW12P	DESCRIPTION	ITEM								
<b>MATERIALS LIST</b>											
<p><b>UNLESS OTHERWISE SPECIFIED</b></p> <p>1) All dimensions are in metric (mm).                  2) Tolerances are as follows:                  1 PL DEC ±0.30     Fractions ±1/64                  2 PL DEC ±0.15     Angles ±1°                  3 PL DEC ±0.08</p> <p>3) Note reference = </p>		<p><b>SIGNATURES</b></p> <p>DRAWN: D.PARKS     18/SEP/13</p> <p>CHECKED:</p> <p>ENGINEER:</p> <p>APPROVAL:</p>	<p style="text-align: center;"><b>Amphenol</b></p> <p style="text-align: center;">Sine Systems - www.amphenol-sine.com                  44724 Morley Drive                  Clinton Township, MI 48036</p>								
MATERIAL SPECIFICATIONS:		CUSTOMER:	<b>P-WEDGELOCK, 12 POSITION, AT SERIES</b>								
PROCESS SPECIFICATIONS:		THIS DRAWING IS SUPPLIED FOR INFORMATION ONLY. DESIGN FEATURES, SPECIFICATIONS AND PERFORMANCE DATA SHOWN HEREON ARE THE PROPERTY OF THE AMPHENOL CORPORATION. NO RIGHTS OF REPRODUCTION ARE IMPLIED. ALL DIMENSIONS ARE SUBJECT TO NORMAL MANUFACTURING VARIATIONS.									
NEXT ASSY:		<table border="1"> <tr> <td>SIZE</td> <td>TYPE</td> <td>DWG NO:</td> <td>REVISION</td> </tr> <tr> <td>A</td> <td>C-</td> <td>AW12P</td> <td>A3</td> </tr> </table>	SIZE	TYPE	DWG NO:	REVISION	A	C-	AW12P	A3	
SIZE	TYPE	DWG NO:	REVISION								
A	C-	AW12P	A3								
		SCALE: NONE	SHEET 1 OF 1								