

Tous droits strictement réservés. Reproduction ou communication a des tiers interdite sous quelque forme que ce soit sans autorisation écrite du propriétaire. Propriété de c FCI. Droits de reproduction FCI.



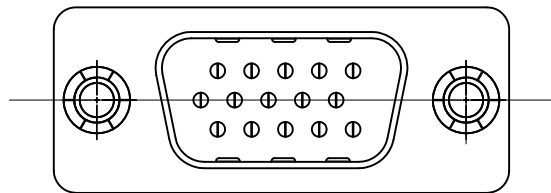
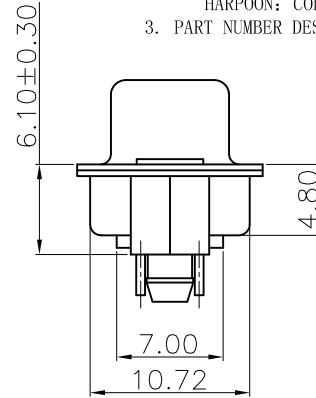
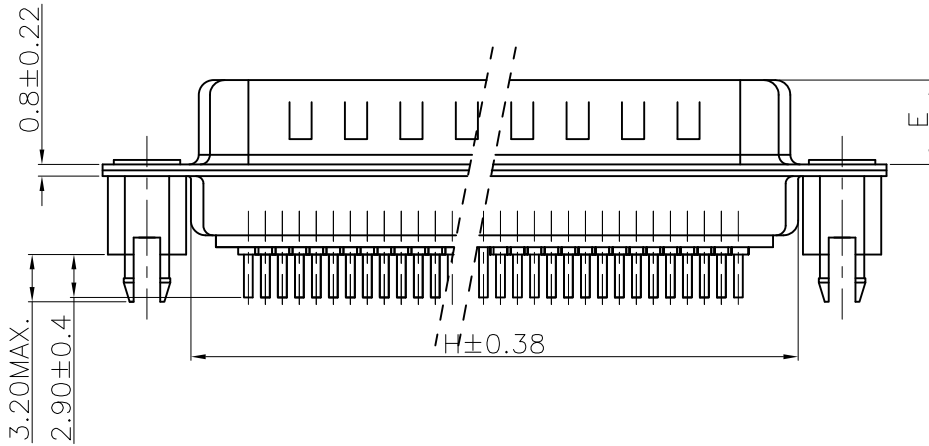
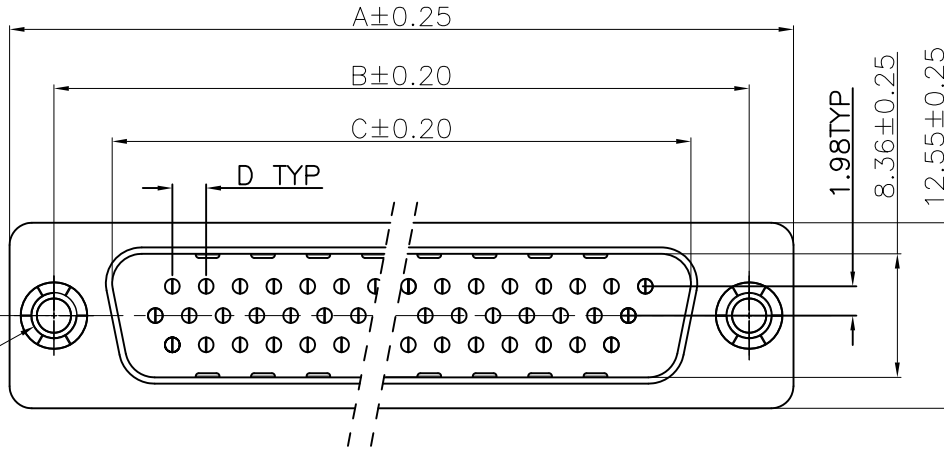
All rights strictly reserved. Reproduction or issue to third parties in any form whatever is not permitted without written authority from the proprietor. Property of FCI. Copyright FCI.

B

1 | 2

3 |

4



FOR 15P

REMARK:

1. CHARACTERISTICS:

RATED VOLTAGE: 250V
 RATED CURRENT: 2.5AMP
 CONTACT RESISTANCE: 25mohms MAX. INITIAL,
 40mohms MAX. AFTER.
 INSULATION RESISTANCE: 5000Mohms MIN. at 500V DC
 DIELECTRIC STRENGTH: 750VRMS
 OPERATING TEMPERATURE RANGE: -55° C~105° C
 INSERTION/EXTRACTION FORCE PER CONTACT: 5N Max./0.2N Min..
 MATING/UNMATING CYCLES: 200MATINGS MIN FOR GOLD-FLASH
 500MATINGS MIN FOR 30u" GOLD.

2. MATERIAL:

INSULATORS: THERMOPLASTIC G.F(UL94V-0) BLACK
 CONTACTS: COPPER ALLOY, GOLD(G/F or 30u") TOP OVER CONTACT
 AREA, 100u" Min MATTE TIN TOP OVER SOLDER AREA,
 50u" Min NICKEL UNDER PLATE.
 SHELL: CARBON STEEL, 100u" Min NICKEL TOP OVER,
 50u" Min COPPER UNDER PLATE.
 HARPOON: COPPER ALLOY , 100u" Min MATTE TIN PLATED.

3. PART NUMBER DESCRIPTION: 10090928-P XX X X LF

SERIES NO. _____
 TYPE _____
 P: PIN (MALE)
 NUMBER OF CONTACTS _____
 15: 15-PIN
 26: 26-PIN
 44: 44-PIN
 62: 62-PIN
 LF: ROHS COMPLIANT
 FLANGE MOUNTING OPTION
 X: UNC #4-40 CLINCHNUTS
 L: M3 CLINCHNUTS
 CONTACT FINISH
 4: GOLD FLASH
 6: 30u" GOLD

| POS. | PART NO. | THREAD TYPE |
|------|------------------|-------------|
| 15 | 10090928-P15*LLF | M3X0.5 |
| 26 | 10090928-P26*LLF | M3X0.5 |
| 44 | 10090928-P44*LLF | M3X0.5 |
| 62 | 10090928-P62*LLF | M3X0.5 |
| 15 | 10090928-P15*XLF | UNC #4-40 |
| 26 | 10090928-P26*XLF | UNC #4-40 |
| 44 | 10090928-P44*XLF | UNC #4-40 |
| 62 | 10090928-P62*XLF | UNC #4-40 |

| POS. | A | B | C | D | E | H |
|------|-------|-------|-------|------|------------------------------------|-------|
| 15 | 30.81 | 24.99 | 16.92 | 2.29 | 5.90 ^{+0.25} ₀ | 19.10 |
| 26 | 39.24 | 33.32 | 25.25 | 2.29 | 5.90 ^{+0.25} ₀ | 27.75 |
| 44 | 53.04 | 47.04 | 38.96 | 2.29 | 5.70 ^{+0.25} ₀ | 41.30 |
| 62 | 69.32 | 63.50 | 55.42 | 2.41 | 5.70 ^{+0.25} ₀ | 57.40 |

| | | | | | | | | | | | | | |
|-------------|----------------|-----|----------|---------------------------------------|-----|----------------------|--|-------------------------|--|----------------------|--|--------------------|-------|
| mat'l. code | | | | tolerances unless otherwise specified | | | | CUSTOMER COPY | | FCI | | www.fciconnect.com | |
| ltr | ecn no | dr | date | linear | | .X ± 0.38 | | projection | | title | | | |
| A | T09-1156 | J.H | 12/10/09 | .XX ± 0.25 | | | | H/D D-SUB MALE STRAIGHT | | | | | |
| B | T10-0164 | J.H | 10/19/10 | .XXX ± 0.10 | | | | MM | | product family D-SUB | | code | |
| | | | | angles | | 0° ±2' | | scale | | size dwg no | | TWN | |
| | | | | dr | | JASON HSU 10/19/10 | | 1:1 | | A4 | | 10090928 | sheet |
| | | | | enr | | JASON HSU 10/19/10 | | | | | | 1 of 5 | |
| | | | | chr | | GARY HSIEH 10/19/10 | | | | | | | |
| | | | | appd | | JOSEPH HSIA 10/19/10 | | | | | | | |
| sheet index | revision sheet | B 1 | B 2 | B 3 | B 4 | B 5 | | | | | | | |

1 | 2

3 |

4

ACAD

PDM: Rev:B

STATUS: Released

Printed: Nov 02, 2010



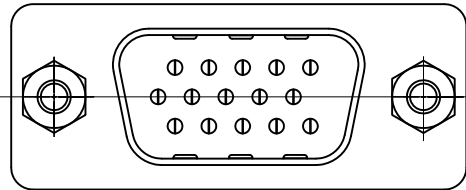
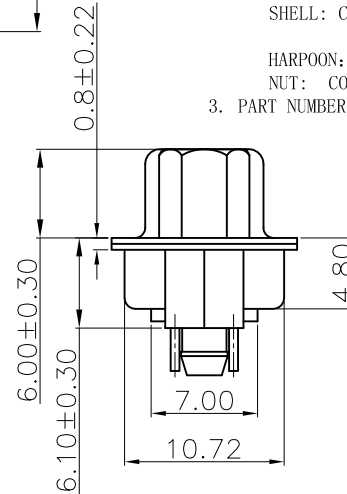
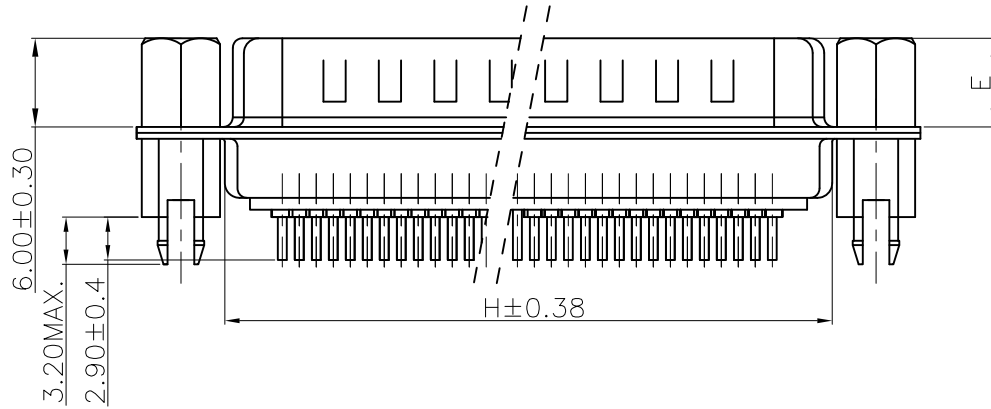
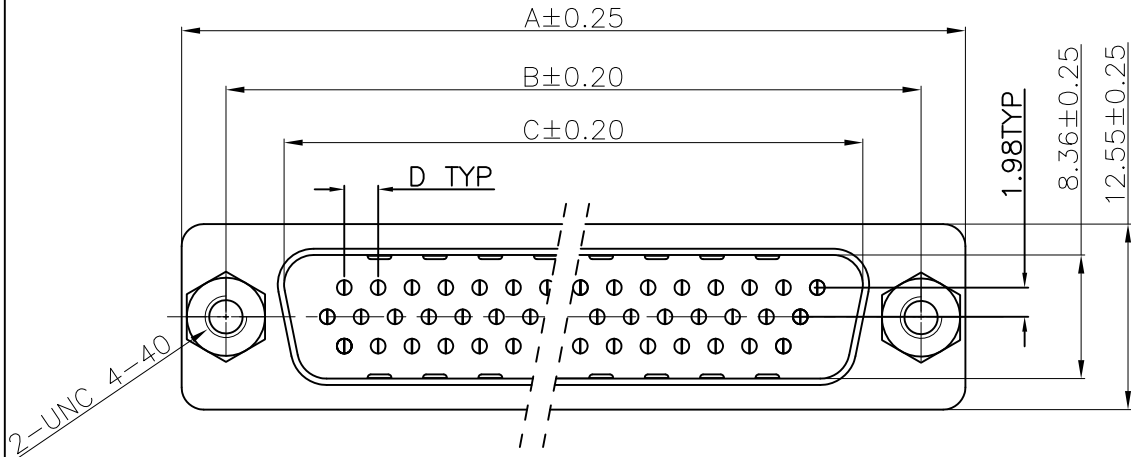
All rights strictly reserved. Reproduction or issue to third parties in any form whatever is not permitted without written authority from the proprietor. Property of FCI. Copyright FCI.

Tous droits strictement réservés. Reproduction ou communication a des tiers interdite sous quelque forme que ce soit sans autorisation écrite du propriétaire. Propriété de c FCI. Droits de reproduction FCI.

1 | 2

3

4



FOR 15P

REMARK:

1. CHARACTERISTICS:

RATED VOLTAGE: 250V
 RATED CURRENT: 2.5AMP
 CONTACT RESISTANCE: 25mohms MAX. INITIAL,
 40mohms MAX. AFTER.
 INSULATION RESISTANCE: 5000Mohms MIN. at 500V DC
 DIELECTRIC STRENGTH: 750VRMS
 OPERATING TEMPERATURE RANGE: -55° C~105° C
 INSERTION/EXTRACTION FORCE PER CONTACT: 5N Max./0.2N Min..
 MATING/UNMATING CYCLES: 200MATINGS MIN FOR GOLD-FLASH
 500MATINGS MIN FOR 30u" GOLD.

2. MATERIAL:

INSULATORS: THERMOPLASTIC G.F(UL94V-0) BLACK
 CONTACTS: COPPER ALLOY, GOLD(G/F or 30u") TOP OVER CONTACT
 AREA, 100u" Min MATTE TIN TOP OVER SOLDER AREA,
 50u" Min NICKEL UNDER PLATE.
 SHELL: CARBON STEEL, 100u" Min NICKEL TOP OVER,
 50u" Min COPPER UNDER PLATE.
 HARPOON: COPPER ALLOY, 100u" Min MATTE TIN PLATED.
 NUT: COPPER ALLOY, 50u" Min NICKEL PLATED.

3. PART NUMBER DESCRIPTION: 10090928-P XX X X LF

SERIES NO. _____ LF: ROHS COMPLIANT
 TYPE _____ FLANGE MOUNTING OPTION
 P: PIN (MALE) V: UNC #4-40 SCREWLOCKS
 NUMBER OF CONTACTS _____ CONTACT FINISH
 15: 15-PIN 4: GOLD FLASH
 26: 26-PIN 6: 30u" GOLD
 44: 44-PIN
 62: 62-PIN

| POS. | PART NO. |
|------|------------------|
| 15 | 10090928-P15*VLF |
| 26 | 10090928-P26*VLF |
| 44 | 10090928-P44*VLF |
| 62 | 10090928-P62*VLF |

| POS. | A | B | C | D | E | H |
|------|-------|-------|-------|------|------------------------------------|-------|
| 15 | 30.81 | 24.99 | 16.92 | 2.29 | 5.90 ^{+0.25} ₀ | 19.10 |
| 26 | 39.24 | 33.32 | 25.25 | 2.29 | 5.90 ^{+0.25} ₀ | 27.75 |
| 44 | 53.04 | 47.04 | 38.96 | 2.29 | 5.70 ^{+0.25} ₀ | 41.30 |
| 62 | 69.32 | 63.50 | 55.42 | 2.41 | 5.70 ^{+0.25} ₀ | 57.40 |

| | | | | | | | | | | | | | | | | |
|-------------|----------------|----|------|---------------------------------------|-------------|---------------|----------------|-------------------------|--|--------------------|--|----------|-------|----------|--|-------|
| mat'l. code | | | | tolerances unless otherwise specified | | CUSTOMER COPY | | FCI | | www.fciconnect.com | | | | | | |
| ltr | ecn no | dr | date | linear | .X ± 0.38 | projection | title | H/D D-SUB MALE STRAIGHT | | | | | | | | |
| B | | | | | .XX ± 0.25 | | | | | | | | | | | |
| | | | | | .XXX ± 0.10 | | | | | | | | | | | |
| | | | | angles | 0° ±2° | MM | product family | D-SUB | | code | | | | | | |
| | | | | dr | JASON HSU | | | | | | | 10/19/10 | size | dwg no | | TWN |
| | | | | enr | JASON HSU | | | | | | | 10/19/10 | scale | 10090928 | | sheet |
| | | | | chr | GARY HSIEH | 10/19/10 | 1:1 | | | 2 of 5 | | | | | | |
| | | | | appd | JOSEPH HSIA | 10/19/10 | | | | | | | | | | |
| sheet index | revision sheet | | | | | | | | | | | | | | | |

1 | 2

3

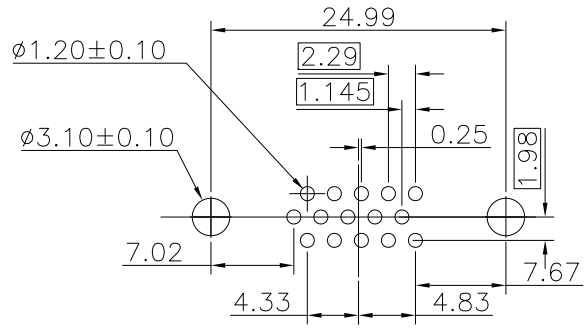
4



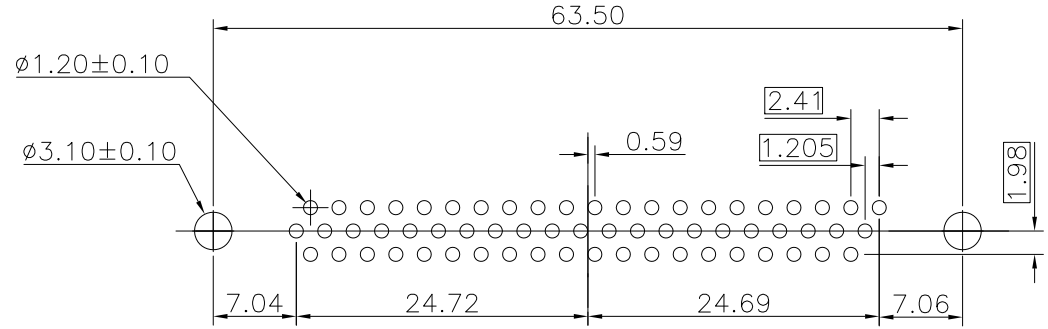
1 | 2

3

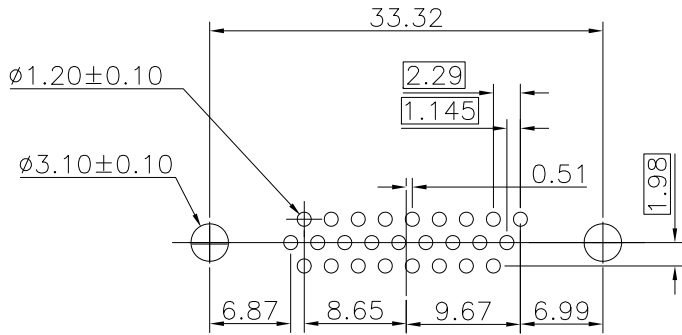
4



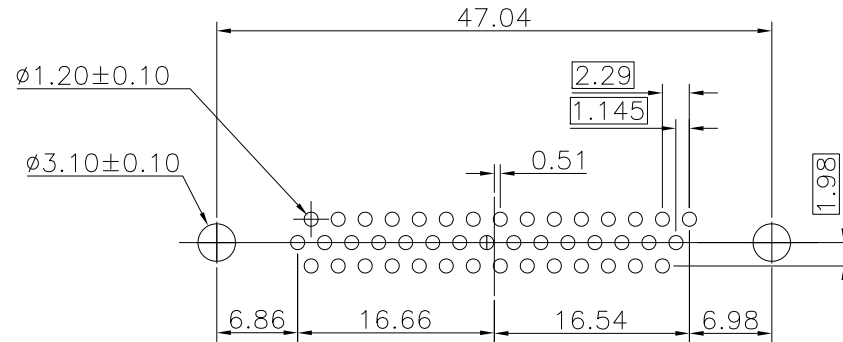
P.C.B LAYOUT(FOR 15P)



P.C.B LAYOUT(FOR 62P)



P.C.B LAYOUT(FOR 26P)



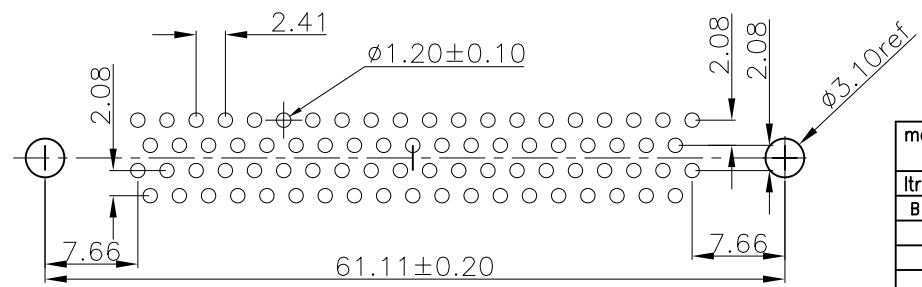
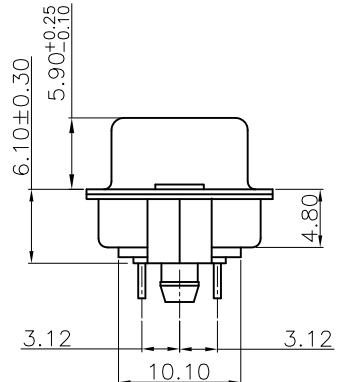
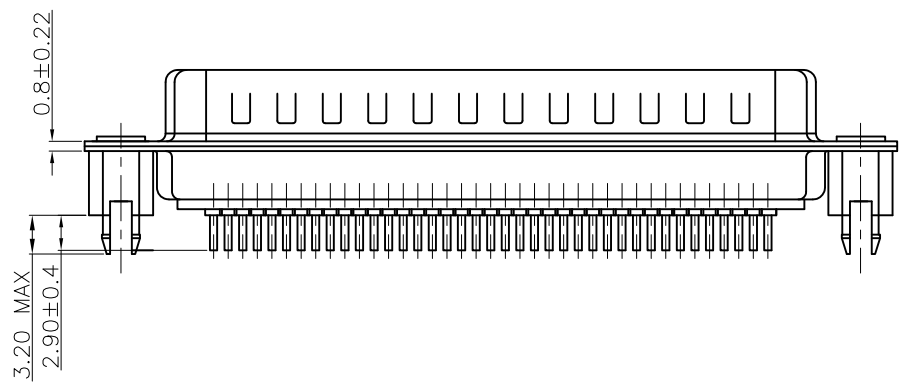
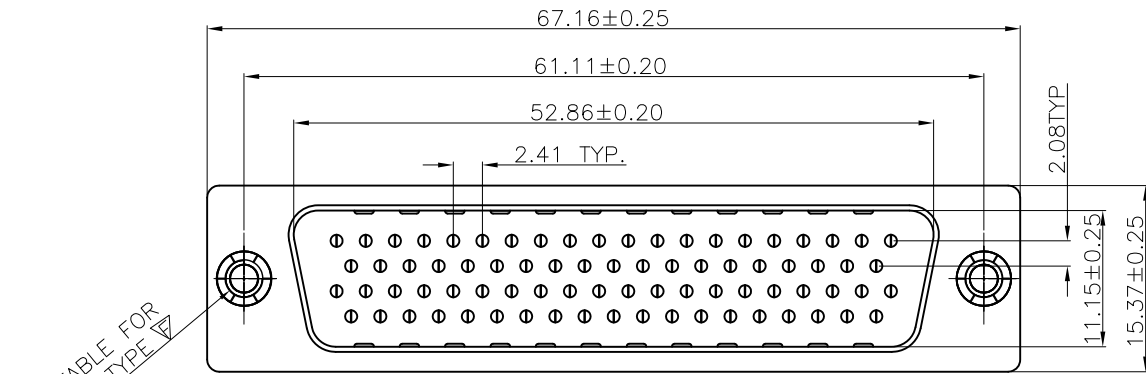
P.C.B LAYOUT(FOR 44P)

| | | | | | | | | | | | |
|-------------|----------------|----|------|---------------------------------------|-------------|----------|---------------------------|-------------|-----------------------------|--------|------|
| mat'l. code | | | | tolerances unless otherwise specified | | | CUSTOMER COPY | | www.fciconnect.com | | |
| ltr | ecn no | dr | date | linear | .X ± 0.38 | | projection | title | | | |
| B | | | | | .XX ± 0.25 | | | | H/D D-SUB MALE STRAIGHT PCB | | |
| | | | | | .XXX ± 0.10 | | | | product family D-SUB | | code |
| | | | | angles | 0° ± 2° | | MM scale 1:1 A4 | size dwg no | | code | |
| | | | | dr | JASON HSU | 10/19/10 | | 10090928 | | TWN | |
| | | | | engr | JASON HSU | 10/19/10 | | | | sheet | |
| | | | | chr | GARY HSIEH | 10/19/10 | | | | 3 of 5 | |
| | | | | appd | JOSEPH HSIA | 10/19/10 | | | | | |
| sheet index | revision sheet | | | | | | | | cage code | | |

1 | 2

3

4



P.C.B LAYOUT

REMARK:

1. CHARACTERISTICS:

- RATED VOLTAGE: 250V
- RATED CURRENT: 2.5AMP
- CONTACT RESISTANCE: 35mohms MAX. INITIAL, 50mohms MAX. AFTER.
- INSULATION RESISTANCE: 5000Mohms MIN. at 500V DC
- DIELECTRIC STRENGTH: 750VRMS
- OPERATING TEMPERATURE RANGE: -55° C~105° C
- INSERTION/EXTRACTION FORCE PER CONTACT: 5N Max. /0.2N Min. .
- MATING/UNMATING CYCLES: 200MATINGS MIN FOR GOLD-FLASH 500MATINGS MIN FOR 30u" GOLD.

2. MATERIAL:

- INSULATORS: THERMOPLASTIC G.F (UL94V-0) BLACK
- CONTACTS: COPPER ALLOY, GOLD(G/F or 30u") TOP OVER CONTACT AREA, 100u" Min MATTE TIN TOP OVER SOLDER AREA, 50u" Min NICKEL UNDER PLATE.
- SHELL: CARBON STEEL, 100u" Min NICKEL TOP OVER, 50u" Min COPPER UNDER PLATE.
- HARPOON: COPPER ALLOY, 100u" Min MATTE TIN PLATED.

3. PART NUMBER DESCRIPTION: 10090928-P XX X X LF

| | | |
|--------------------|---------------|---|
| SERIES NO. | | LF: ROHS COMPLIANT |
| TYPE | P: PIN (MALE) | FLANGE MOUNTING OPTION |
| NUMBER OF CONTACTS | 78: 78-PIN | X: UNC #4-40 CLINCHNUTS L: M3 CLINCHNUTS |
| | | CONTACT FINISH |
| | | 4: FLASH GOLD 6: 30u" GOLD |

| POS. | PART NO. | THREAD TYPE |
|------|------------------|-------------|
| 78 | 10090928-P78*LLF | M3X0.5 |
| 78 | 10090928-P78*XLF | UNC #4-40 |

| | | | | | | | | | | |
|-------------|----------------|----|------|---------------------------------------|----------------------|------------|---------------|-------------------------|---------------------------|--------|
| mat'l. code | | | | tolerances unless otherwise specified | | | CUSTOMER COPY | | FCI www.fciconnect.com | |
| ltr | ecn no | dr | date | linear | .X ± 0.38 | projection | | title | | |
| B | | | | | .XX ± 0.25 | | | H/D D-SUB MALE STRAIGHT | | |
| | | | | | .XXX ± 0.10 | | | product family D-SUB | | |
| | | | | angles | 0° ± 2° | | | size | dwg no | code |
| | | | | dr | JASON HSU 10/19/10 | MM | | A4 | 10090928 | TWN |
| | | | | enr | JASON HSU 10/19/10 | scale | | | | sheet |
| | | | | chr | GARY HSIEH 10/19/10 | 1:1 | | | | 4 of 5 |
| | | | | appd | JOSEPH HSIA 10/19/10 | | | | | |
| sheet index | revision sheet | | | | | | | | | |

