

# D-SUB STANDARD

Crimp body (without contacts) – For wire size AWG 24...20 and AWG 28...24

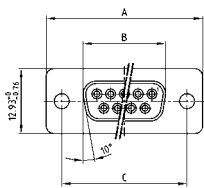


RoHS compliant – CSA listed, File No.: LR 115000-1 – UL listed, File No.: E202784

## DESCRIPTION

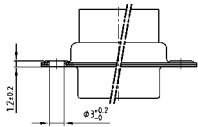
- For machined and stamped contacts, AWG 24...20 and AWG 28...24
- Mounting styles:
  - with through-hole, Ø .118" / 3 mm
  - with 4-40 UNC or M3 threaded insert
- Shell: Steel tin plated (brass tin plated or stainless steel available on request)

## SOCKET CONNECTOR



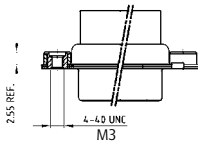
No. of pos.	A -0.76	B -0.25	C
09	31.19	16.46	25.00 +0.12
15	39.52	24.79	33.30 +0.15 -0.10
25	53.42	38.50	47.04 ±0.13
37	69.70	54.96	63.50 ±0.13
50	67.31	52.55	61.10 +0.14 -0.11

Mounting style: Through-hole

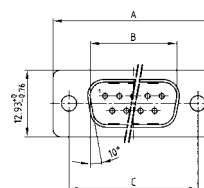


50 pos. = Dim. in ( \_ )

Mounting style: Threaded insert

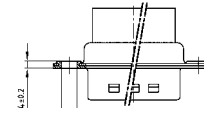


## PLUG CONNECTOR



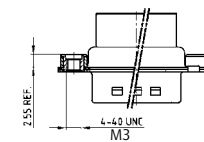
No. of pos.	A -0.76	B -0.25	C	D -0.3
09	31.19	16.79	25.00 +0.12	6.12
15	39.52	25.12	33.30 +0.15 -0.10	6.12
25	53.42	38.84	47.04 ±0.13	5.99
37	69.70	55.30	63.50 ±0.13	5.99
50	67.31	52.68	61.10 +0.14 -0.11	5.99

Mounting style: Through-hole



50 pos. = Dim. in ( \_ )

Mounting style: Threaded insert



## ORDER DATA

SOCKET CONNECTOR		
No. of pos.	Mounting style	Part Number
09	Through-hole	164X 11769 X
15	Through-hole	164X 11779 X
25	Through-hole	164X 11789 X
37	Through-hole	164X 11799 X
50	Through-hole	164X 11809 X
09	4-40 UNC Threaded insert	DSS 1XSXXG04 X
15	4-40 UNC Threaded insert	DSS 2XSXXG04 X
25	4-40 UNC Threaded insert	DSS 3XSXXG04 X
37	4-40 UNC Threaded insert	DSS 4XSXXG04 X
50	4-40 UNC Threaded insert	DSS 5XSXXG04 X
09	M3 Threaded insert	DSS 1XSXXG03 X
15	M3 Threaded insert	DSS 2XSXXG03 X
25	M3 Threaded insert	DSS 3XSXXG03 X
37	M3 Threaded insert	DSS 4XSXXG03 X
50	M3 Threaded insert	DSS 5XSXXG03 X

PLUG CONNECTOR		
No. of pos.	Mounting style	Part Number
09	Through-hole	163X 10019 X
15	Through-hole	163X 10029 X
25	Through-hole	163X 10039 X
37	Through-hole	163X 10049 X
50	Through-hole	163X 10059 X
09	4-40 UNC Threaded insert	DSS 1XPXXG04 X
15	4-40 UNC Threaded insert	DSS 2XPXXG04 X
25	4-40 UNC Threaded insert	DSS 3XPXXG04 X
37	4-40 UNC Threaded insert	DSS 4XPXXG04 X
50	4-40 UNC Threaded insert	DSS 5XPXXG04 X
09	M3 Threaded insert	DSS 1XPXXG03 X
15	M3 Threaded insert	DSS 2XPXXG03 X
25	M3 Threaded insert	DSS 3XPXXG03 X
37	M3 Threaded insert	DSS 4XPXXG03 X
50	M3 Threaded insert	DSS 5XPXXG03 X

# Mouser Electronics

Authorized Distributor

Click to View Pricing, Inventory, Delivery & Lifecycle Information:

## CONEC:

[162A11839X](#) [162A11849X](#) [163A11179X](#) [164A10119X](#) [163A11349X](#) [DSS1XPFAA50X](#) [DSS1XPXXG04X](#)  
[164A10139X](#) [164A10159X](#) [164A10269X](#) [164A10129X](#) [164A10449X](#) [DSS3XSFAA49X](#) [DSS2XPFAA50X](#)  
[DSS5XSXXG04X](#) [DSS3XPFAA50X](#) [DSS5XPXXG04X](#) [DSS4XSFAA49X](#) [DSS2XPXXG04X](#)