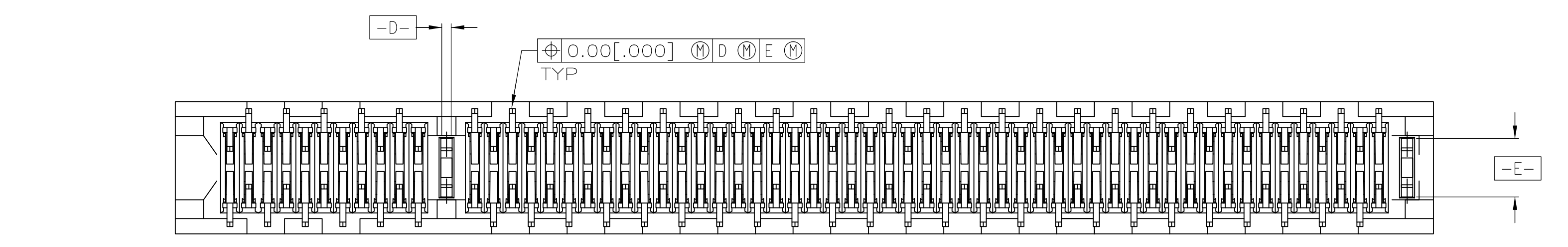
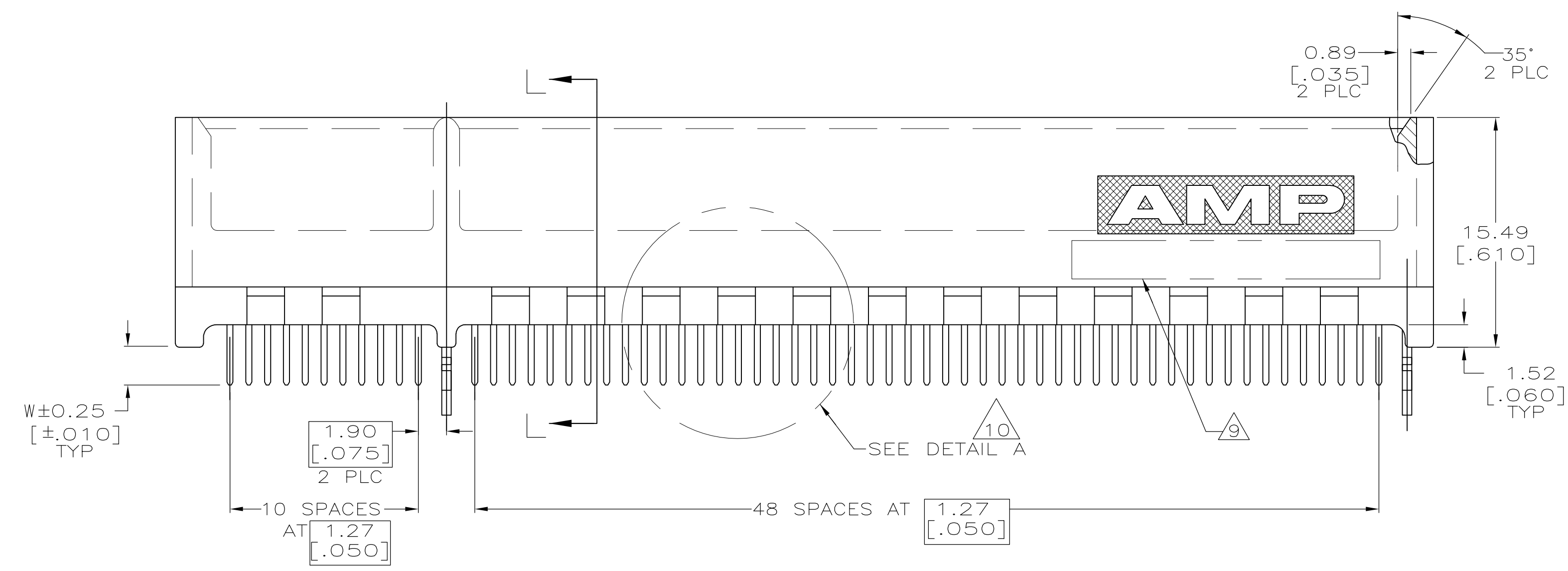
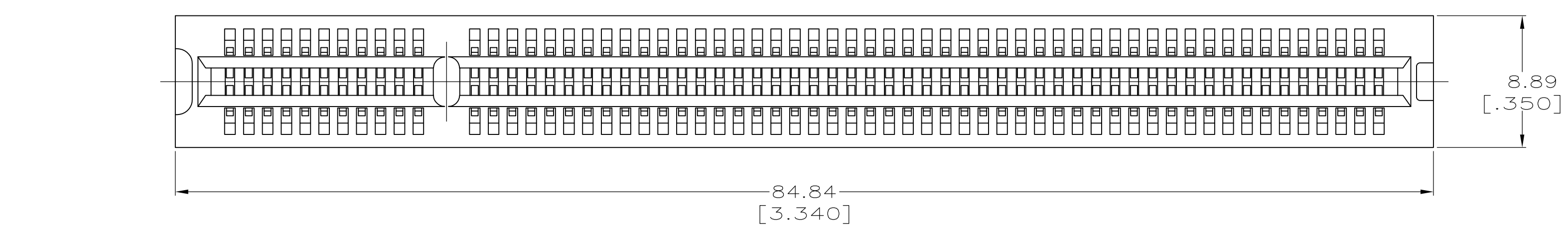
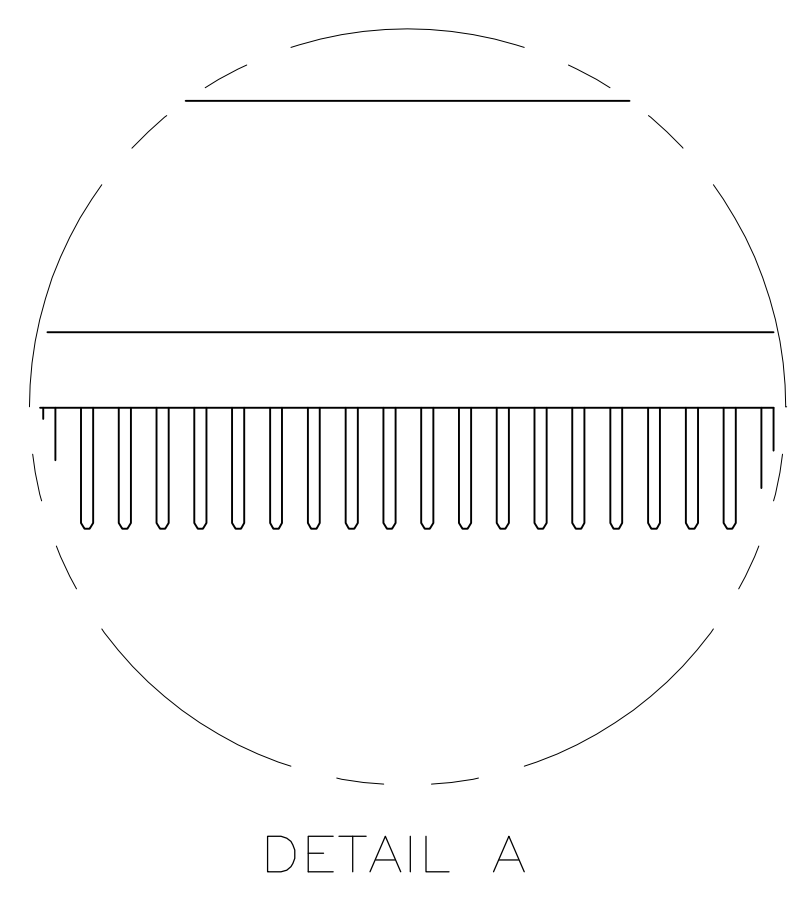


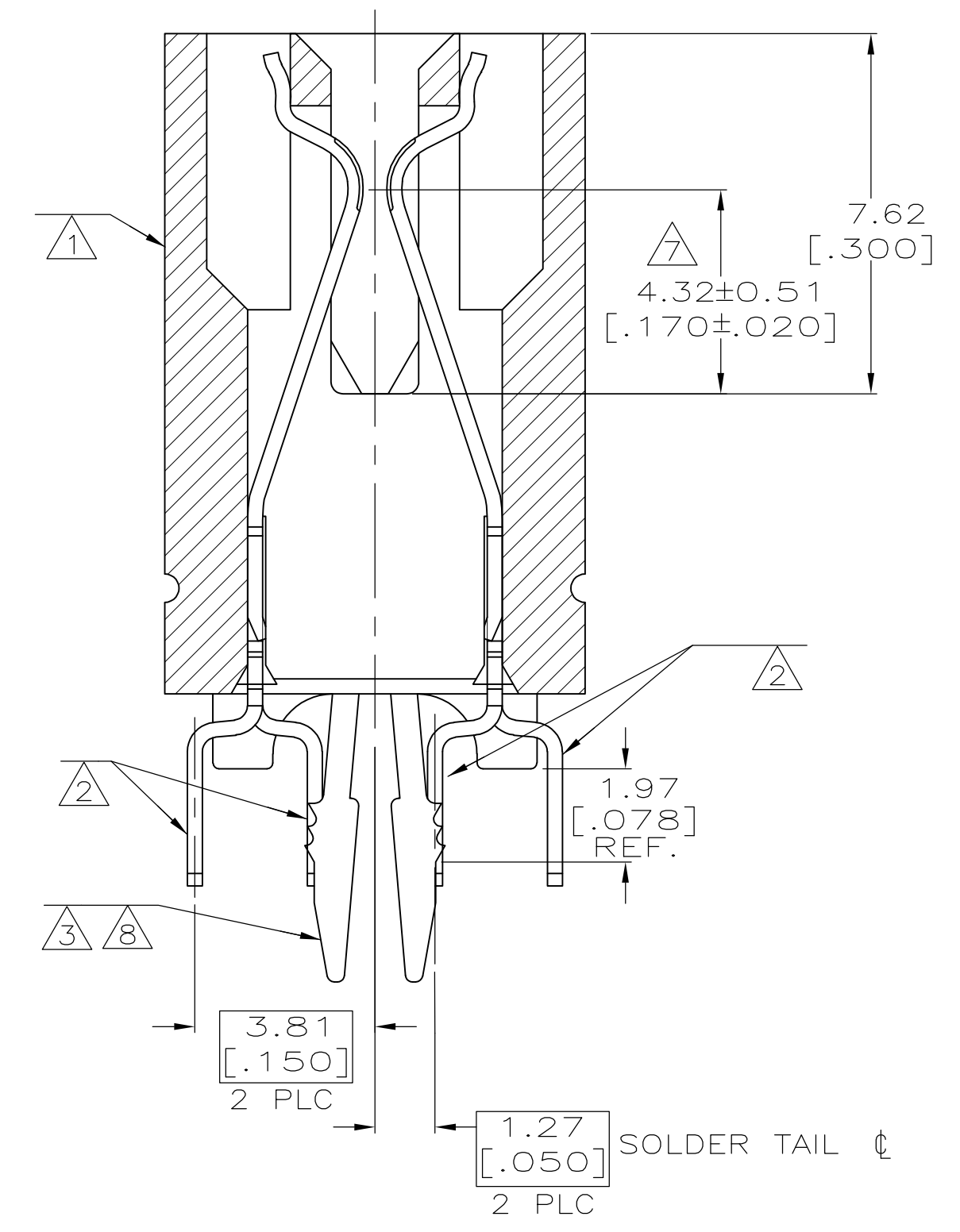
LOC		DIST		REVISIONS			
GP	00	REV	DATE	BY	CHK	APPV	
D		REVISED PER ECO-05-014284	30NOV05	RG	AWF		
D1		REVISED PER ECO-10-000444	19JAN10	KK	HMR		



SEE SHEET 2 FOR HOLE PATTERN



- ① HOUSING: HIGH TEMPERATURE THERMOPLASTIC. COLOR - NATURAL
- ② CONTACT: PHOSPHOR BRONZE.
- ③ METAL HOLD DOWN: BRASS
- ④ CONTACT FINISH: .001269[.000050] MIN NICKEL ALL OVER. GOLD FLASH OVER NICKEL IN CONTACT AREA. .002537[.000100] MIN MATTE TIN OVER NICKEL ON SOLDER TAILS.
- ⑤ CONTACT FINISH: .001269[.000050] MIN NICKEL ALL OVER. .000375[.000015] GOLD OVER NICKEL IN CONTACT AREA. .002537[.000100] MIN MATTE TIN OVER NICKEL ON SOLDER TAILS.
- ⑥ CONTACT FINISH: .001269[.000050] MIN NICKEL ALL OVER. .000757[.000030] GOLD OVER NICKEL IN CONTACT AREA. .002537[.000100] MIN MATTE TIN OVER NICKEL ON SOLDER TAILS.
- ⑦ DISTANCE FROM CONTACT POINT TO BOTTOM OF CARD SLOT.
- ⑧ METAL HOLD DOWN FINISH: .001269[.000050] MIN NICKEL ALL OVER. .003809[.000150] MIN MATTE TIN ALL OVER.
- ⑨ AMP PART NUMBER, DATE CODE AND CSA LOGO MARKED IN APPROXIMATE LOCATION SHOWN.
- ⑩ CORED OR SOLID SIDE WALLS ARE AT DISCRETION OF AMP INCORPORATED.
- ⑪ OBSOLETE PARTS: OBSOLETE CIS STREAMLINING PER D.RENAUD/D.SINISI



SECTION L-L
SCALE 8:1

OBSOLETE	4.70 [.185]	①	1-5145167-3
	3.56 [.140]	②	1-5145167-2
	3.18 [.125]	③	5145167-8
	2.54 [.100]	④	5145167-4
OBSOLETE	2.54 [.100]	⑤	5145167-3
① OBSOLETE	2.54 [.100]	⑥	5145167-2
⑪ OBSOLETE	2.54 [.100]	⑦	5145167-1

W	FINISH	PART NUMBER

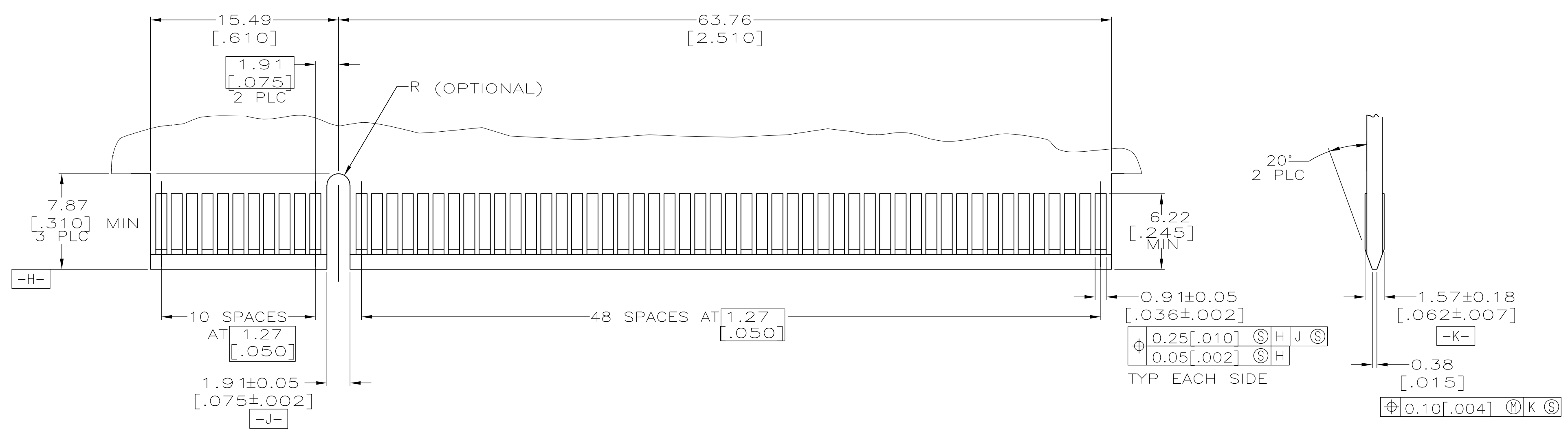
THIS DRAWING IS A CONTROLLED DOCUMENT.

DIMENSIONS:	TOLERANCES UNLESS OTHERWISE SPECIFIED:	DATE	11 APR 05
mm	0 PLC ± -	CHK	AL FRANTUM
	1 PLC ± -	APPV	AL FRANTUM
	2 PLC ± 0.25 [.01]	NAME	
	3 PLC ± 0.127 [.005]	PRODUCT SPEC	108-14034
	4 PLC ± -	APPLICATION SPEC	114-26012
	ANGLES ± ±	SIZE	A1
MATERIAL	FINISH	WEIGHT	000779
①②③	④⑤⑥	CUSTOMER DRAWING	5145167

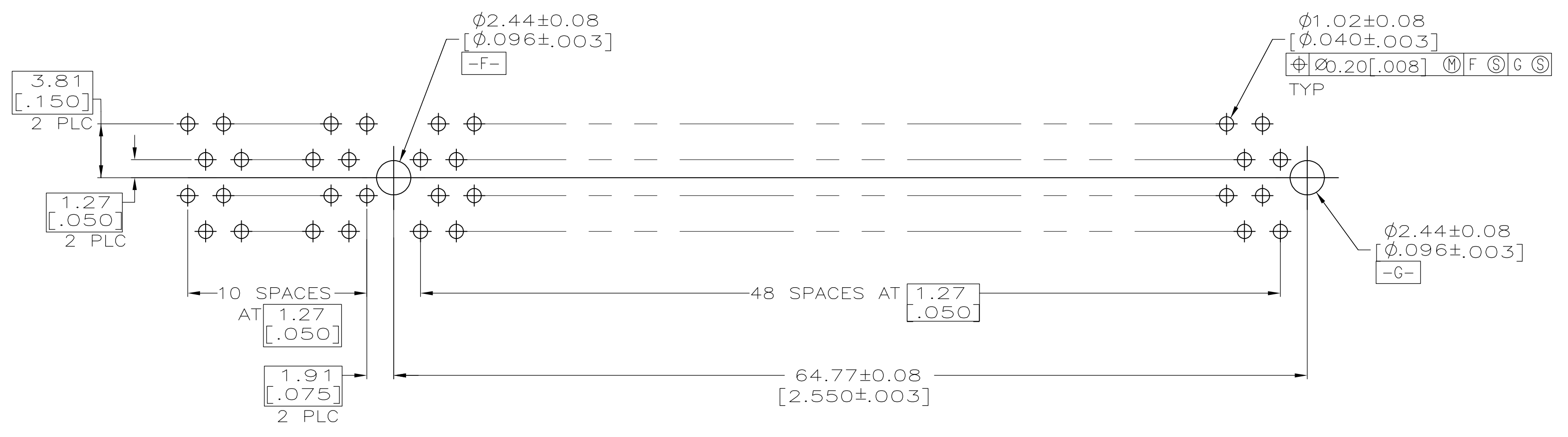
Tyco Electronics Corporation
 Harrisburg, Pa 17105-3608

CONNECTOR ASSEMBLY, 60 DUAL POSITION, 1.27 [.050] SERIES, STANDARD EDGE

SCALE 4:1 SHEET 1 OF 2 REV D1



RECOMMENDED MATING BOARD EDGE CONFIGURATION



RECOMMENDED CONNECTOR MOUNTING HOLE PATTERN
(CONNECTOR SIDE SHOWN)

THIS DRAWING IS A CONTROLLED DOCUMENT.		DMN: AL FRANTUM 11 APR 05	Tyco Electronics Corporation Harrisburg, Pa 17105-3608	
DIMENSIONS: mm		CHK: AL FRANTUM 11 APR 05	Tyco Electronics	
TOLERANCES UNLESS OTHERWISE SPECIFIED:		APVD: -	NAME: CONNECTOR ASSEMBLY, 60 DUAL POSITION, 1.27 [.050] SERIES, STANDARD EDGE	
0 PLC ± -		PRODUCT SPEC: 108-14034		RESTRICTED TO: -
1 PLC ± -		APPLICATION SPEC: 114-26012		
2 PLC ± 0.25 [.01]		SIZE: A1		SCALE: 4:1 SHEET 2 OF 2 REV D1
3 PLC ± 0.127 [.005]		CAGE CODE: 00779		
4 PLC ± -		DRAWING NO: 5145167		
ANGLES ± ± °		WEIGHT: -		
MATERIAL: SEE SHEET 1		FINISH: SEE SHEET 1		
		CUSTOMER DRAWING		