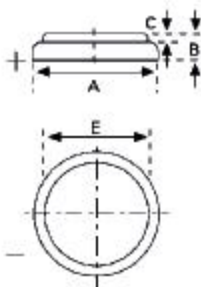


# CR 1220



Type Number .....	6220
Designation IEC .....	CR 1220
System .....	Li-Manganese dioxide/ Organic Electrolyte
UL Recognition .....	MH 13654 (N)
Nominal Voltage .....	3 V
Typical Capacity C .....	35 mAh (Load 39 kOhm, at 20°C down to 2 V)
Weight (approx.) .....	0,8 g
Volume .....	0,2 ccm
Coding .....	Date of Manufacturing Month/Year

Temperature Ranges	min.	max.
Storage .....	-55°C	70°C
Discharge .....	-20°C	70°C <sup>1</sup>

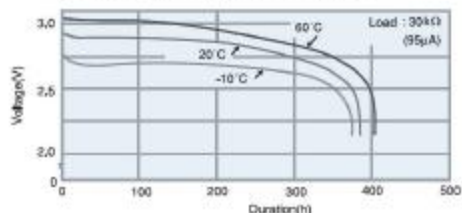
Dimensions	min.	max.
Diameter (A) .....	12,20	12,50
Height (B) .....	1,80	2,00
Shoulder Diameter [E] .....	10,00	
Shoulder Height [C] .....	0,30	

### Typical Capacities (at 20°C)

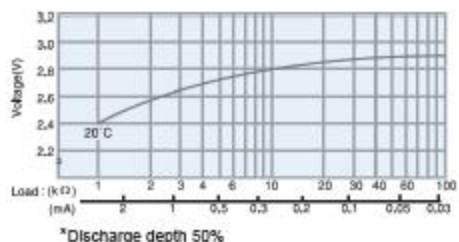
Discharge Type	Load	End Voltage: 2,0 V	
Continuous 24 h/d, 7 d/w Current [µA]	39000 Ω	Time:	480 h
		Capacity:	35 mAh
		Energy:	100 mWh

## Performance Data

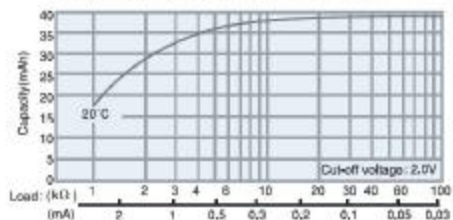
### Temperature Characteristics



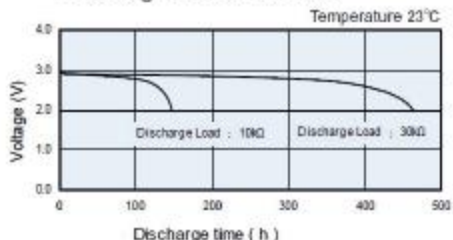
### Operating Voltage vs. load resistance\*



### Capacity vs. load resistance



### Discharge Characteristics



<sup>1</sup> Contact VARTA if the application is intended to be outside the range of -20°C to +70°C.

<sup>2</sup> depending on environmental condition and energy consumption

- Self-discharge rate < 1% at room temperature
- Storage life > 10 years
- Operating life<sup>2</sup> > 10 years