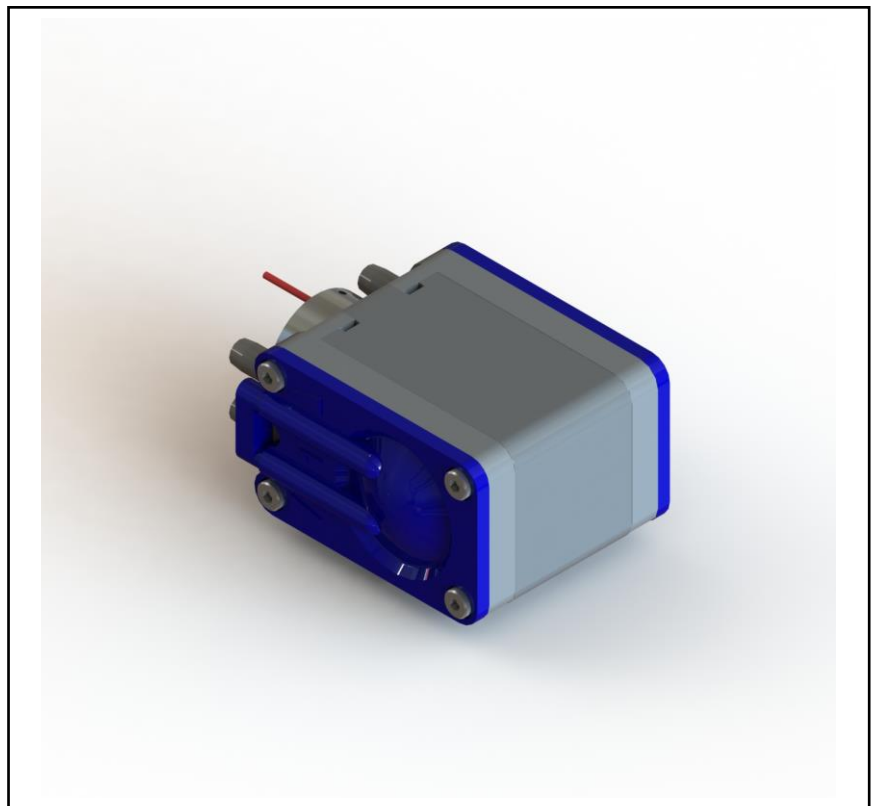


Features

- High flow rate
- Good performance under suction
- Low power consumption
- Small size only 45x36x23mm
- Light weight: 47g
- Robust design
- Can be user optimized for either best flow or pressure

RS PRO GAS COMPRESSOR PUMP

RS Stock No.: 125-3593



RS PRO is the own brand of RS. The RS PRO Seal of Approval is your assurance of professional quality, a guarantee that every part is rigorously tested, inspected, and audited against demanding standards. Making RS PRO the Smart Choice for our customers.

Product Description

The D3K pumps are miniature diaphragm pumps designed for maximum performance with minimum power consumption making them especially suitable for portable, battery powered devices. They are constructed from a special blend of Polycarbonate and ABS for maximum strength and rigidity and have elastomeric components manufactured from Nitrile. They are powered by a small and highly efficient coreless DC motor for ultimate efficiency. The dual inlet and outlet ports allow the two pump heads to be plumbed in series for maximum pressure and vacuum or in parallel for maximum flow.

The D3K is suitable for applications such as : Medical devices, Analysis systems, Gas detection and monitoring, Cooling air systems, Precision flow.

General Specifications

Type	Gas Compressor Pump
Maximum Flow Rate	2.7 l/min (air)
Input Connection	4.2mm hose barb connector
Input Connection Size	2.4mm ID flexible tubing
Output Connection Size	2.4mm ID flexible tubing
Maximum Vacuum/Pressure	-300/400 mBar (@6V)
Wetted Materials	PC/ABS Polymer, Nylon 66, Nitrile
Coupling Type	Direct drive
Head Type	Double
Noise Level	<60dB measured 1m from pump
Auto On/Off Switch	No

Mechanical Specifications

Dimensions	23x36x45mm
Weight	47g

Electrical Specifications

Connection	Stripped wires (DC)
Supply Voltage	2-6v
Input Power	0.9-1.7W

Protection Category

Safety Category Level	S1
IP Rating	IP 41

Approvals

Compliance/Certifications	ISO 9001 Quality Control Standard
Declarations	TCS Declaration of Conformity - RoHS Directive 2011/65/EU, SVCH, CMRT, 3TG and REACH compliant.

Similar Products

Stock No.	Brand	Maximum Flow Rate	Input Connection	Input Power
702-6898	RS PRO	400ml/min	DV	2-4.5V
817-0716	RS PRO	400ml/min	DC	3-6V

TEST CONDUCTED ON AIR AT 4 AND 6V.

