



DATA SHEET	10196000
EPIC® H-BE 24 SS / H-BE 24 BS	Valid from: 09.07.2015

Description

- Standard inserts with screw termination, crimp termination, cage clamp termination and Push-In termination
- The EPIC® H-BE series is suitable for applications that require a reliable connection when working with high voltages and currents



General Characteristics

Series	H-BE 24
Version	Male/Female(Article 10197000)
Wire Protection	Yes
Number of Contacts	24 + PE
Termination Methods	Screw termination: 0.5 - 2.5 mm ²
Temperature Range	-40°C to +100°C, short-term up to +125°C

Mechanical Characteristics

Cycle of mechanical operation	100
-------------------------------	-----

Electrical Characteristics

Rated Voltage, IEC	500 V
Rated Voltage, UL	600 V
Rated Voltage, CSA	600 V
Rated Impulse Voltage	6 kV
Rated Current, IEC	16 A
Rated Current, UL	16 A
Rated Current, CSA	16 A
Contact Resistance	< 2 mOhm
Degree of Soiling	3

Materials and Surfaces

Contacts	Copper alloy, hard silver-plated
Insulating Body	PC
Flammability Class according to UL 94	V0

Approvals

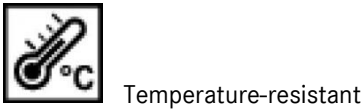
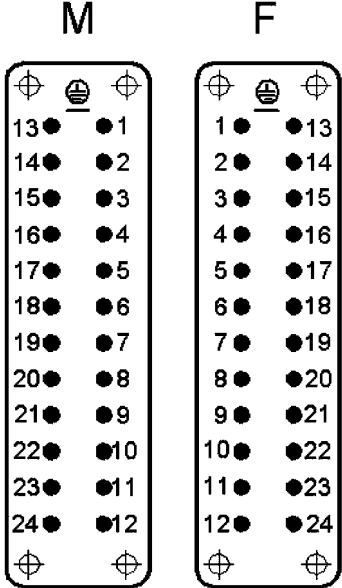
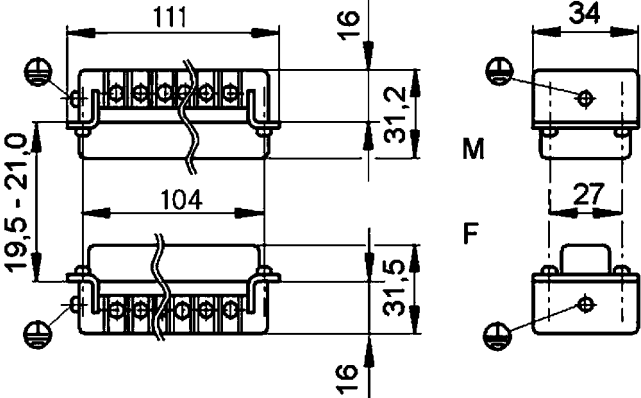
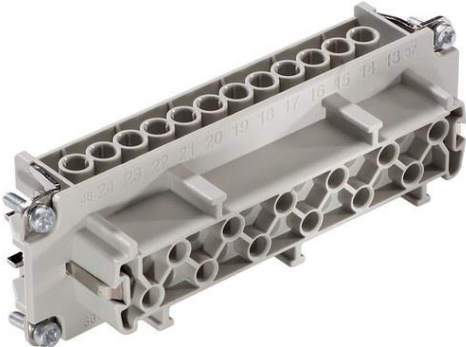
UL-Approval, E-File-Number	E75770
VDE-Approval, VDE-REG.-Nr.	B437

Standard

Product Standard	IEC 61984, UL 1977
------------------	--------------------

Creator: MANU2/PDP Released: IVSE1/PDP	Document: DB10196000EN Version: 00	Page 1 of 2
---	---------------------------------------	-------------

Technical Drawings



Info
 Multifunctional insert for versatile applications
 Screw, crimp, cage clamp and Push-In version - freely combinable
 Also as EPIC® H-BE 48 available

Application range
 Mechanical engineering
 Light & sound technology
 Plastics industry

Remark
 Photographs are not to scale and do not represent detailed images of the respective products.



DATA SHEET	19104000
EPIC® H-B 24 SGR	Valid from: 03.08.2015

Description

- Ideal for many applications due to a wide range of housings and inserts



General Characteristics

Series	H-B 24
Version	Surface mount base M25
Locking	Double lever
Cable entry	1
Protection	IP 65(latched)
Temperature Range	-40°C to +100°C, short term up to +125°C

Materials and Surfaces

Housing	powder-coated aluminium alloy, grey
Bolt	Zinc-plated steel
Lever	Zinc-plated steel
Sealing	NBR

Approvals

VDE-Approval, VDE-REG.-Nr.	B437
----------------------------	------

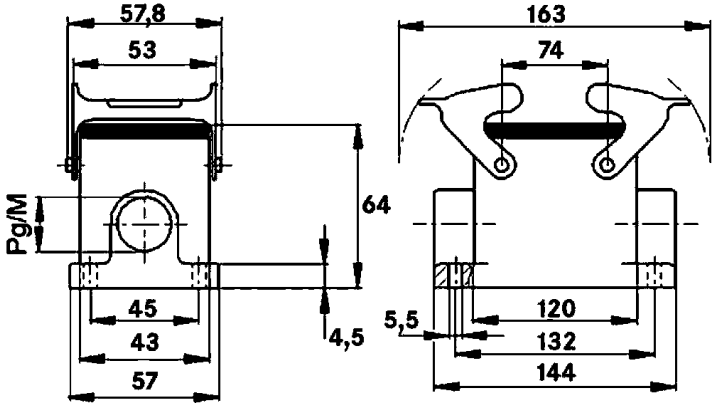
Standard

Product Standard	IEC 61984
------------------	-----------

Creator: MANU2/PDP Released: IVSE1/PDP	Document: DB19104000EN Version: 00	Page 1 of 2
---	---------------------------------------	-------------

DATA SHEET	19104000
EPIC® H-B 24 SGR	Valid from: 03.08.2015

Technical Drawings



Automation



Industrial machinery and plant engineering



Mechanical resistance



Robust



Waterproof

Info

Universal, robust metal housings size H-B 24

Application range

- Plant engineering
- Light & sound technology
- Plastics industry

Remark

Photographs are not to scale and do not represent detailed images of the respective products.

Creator: MANU2/PDP Released: IVSE1/PDP	Document: DB19104000EN Version: 00	Page 2 of 2
---	---------------------------------------	-------------