

PRODUCT NUMBER  
77709-YXXLF

RoHS COMPLIANT & COMPATIBLE, SEE NOTE 8

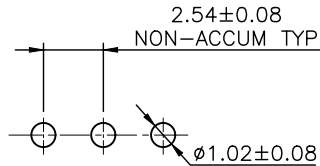
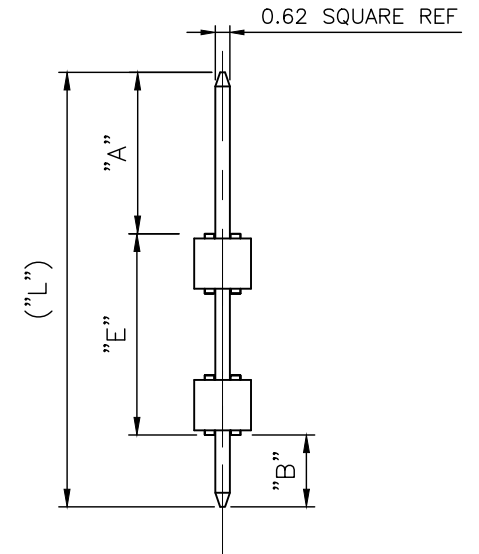
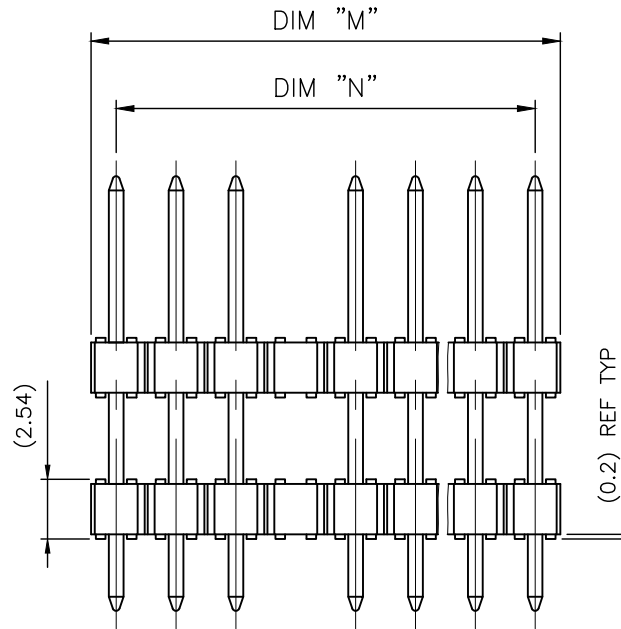
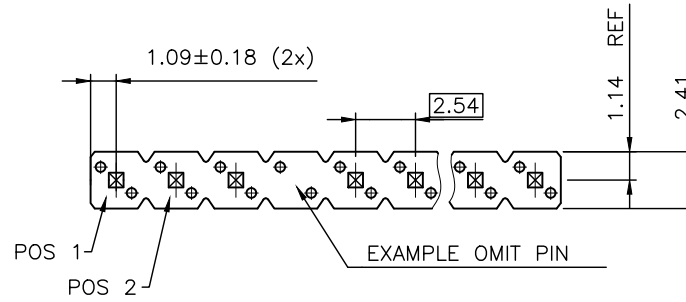
PIN STYLE SEE TABLE SHEET 2

PLATING:

- 1 = 0.76µm FULL GOLD/GXT
- 3 = 2.0µm MIN MATTE TIN FULL PLATED
- 7 = 0.13µm FULL GOLD
- 8 = 0.38µm FULL GOLD/GXT
- G = 0.25µm GOLD/GXT ON CONTACT AREA, 2µm MIN MATTE TIN ON TAIL
- 1.27µm NICKEL MIN UNDERLAYER FOR ALL PLATING VERSIONS

NOTES:

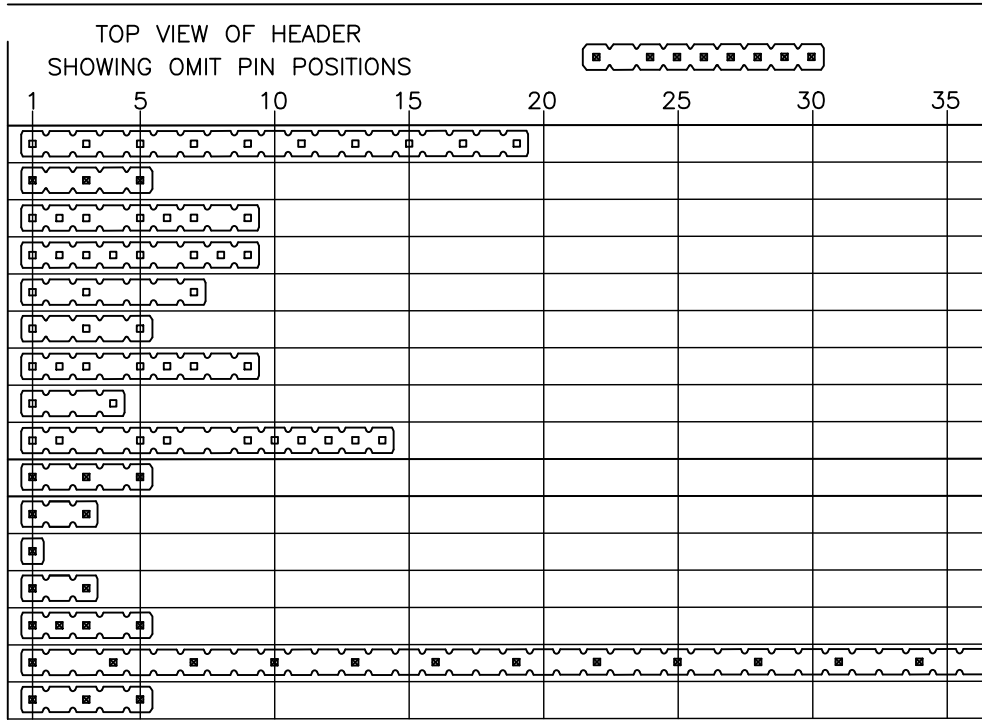
1. HOUSING MAT'L : HIGH TEMPERATURE THERMOPLASTIC FLAME RETARDANT PER UL94-VO, COLOR BLACK.
2. PIN MATERIAL : PHOSPHOR BRONZE.
3. STANDARD PACKAGING IN POLYBAG
4. RoHS COMPATIBLE PRODUCT SPECIFICATIONS
  - a - SUFFIX "LF" IS ADDED JUST FOR EASY
  - b - MANUFACTURING PROCESS COMPATIBILITY
    - THE HOUSING WILL WITHSTAND EXPOSURE TO 260°C ±5°C SOLDER BATH TEMPERATURE FOR 5 SECONDS IN A WAVE SOLDER APPLICATION WITH A 1.6mm MIN THICK CIRCUIT BOARD.
  - c - LABELING:
    - MEETS PACKAGING SPECS AS PER GS-14-920
  - d - LEGAL STATEMENT: SEE GS-47-0004



RECOMMENDED HOLE PATTERN

mat'l. code		surface		tolerance		projection		product family	
		ISO 1302		ISO 406 ISO 1101		mm		BSTIK	
ltr	ecn no	dr	date	tolerances unless otherwise specified				title	
W	F-22318	AMA	15.10.27					HEADER SR,STR	
X	F-23461	LMU	16.03.07	angles	linear				
Y	F-24446	AMA	16.07.05					DOUBLE BODY POL	
AA	F-26438	LMU	17.03.22	dr	O MATHEVON	96.04.01	dwg no		
AB	F-28033	DDE	17.09.25	engr	COMPAGNON.J	96.04.01	sheet 1 of 2		
AC	F-31692	LMU	18.10.22	chr	JCO	96.04.01	size		
				appd	JMC	96.04.01	A3		
sheet	revision	AC	AA						
index	sheet	1	2						

PIN STYLE	NB OF POS	PRODUCT DEFINITION					
		"A" ±0.2	"E" ±0.25	"B" ±0.25	("L") REF	("M") REF	("N") REF
21	1x 19	3.0	20.3	2.75	26.04	48.26	45.72
22	1x 05	4.95	6.00	4.95	15.90	12.70	10.16
23	1x 09	4.95	6.00	4.95	15.90	22.86	20.32
24	1x 09	3.10	11.45	3.10	17.65	22.86	20.32
25	1x 07	3.10	11.45	3.10	17.65	17.78	15.24
26	1x 05	8.60	6.00	8.60	23.20	12.70	10.16
27	1x 09	8.60	6.00	8.60	23.20	22.86	20.32
28	1x 04	15.20	12.00	3.60	30.80	10.16	7.62
29	1x 14	15.20	12.00	3.60	30.80	35.56	33.02
30	1x 05	3.00	13.00	3.00	19.00	12.70	10.16
31	1x 03	3.05	6.50	3.05	12.60	7.62	5.08
32	1x 01	3.05	6.50	3.05	12.60	2.54	N/A
33	1x 03	3.05	5.08	3.05	11.18	7.62	5.08
34	1x 05	7.36	11.43	2.29	21.08	12.70	10.16
35	1x 36	8.07	20.00	3.05	31.12	91.44	88.90
36	1x 05	2.75	15.50	2.75	21.00	12.70	10.16



A

B

A

B

C

C

D

D

FCIconnect.com



Copyright FCI

mat'l. code				surface <input checked="" type="checkbox"/> ISO 1302 <input type="checkbox"/> ISO 406 <input type="checkbox"/> ISO 1101		tolerance		projection		product family	
ltr ecn no dr date				tolerances unless otherwise specified				mm		BSTIK	
X F-26438 LMU 17.03.22				angles linear				scale 1:1		title	
Y F-28033 DDE 17.09.25										HEADER SR,STR	
AA F-31692 LMU 18.10.22										DOUBLE BODY POL	
				dr O MATHEVON		96.04.01				dwg no sheet 2 of 2 size	
U F-22318 AMA 15.10.27				engr COMPAGNON.J		96.04.01				77709 A3	
V F-23461 LMU 16.03.07				chr JCO		96.04.01				type CUSTOMER Drawing	
W F-24446 AMA 16.07.05				appd JMC		96.04.01					
sheet index		revision sheet									

# Mouser Electronics

Authorized Distributor

Click to View Pricing, Inventory, Delivery & Lifecycle Information:

[FCI / Amphenol:](#)

[77709-726LF](#) [77709-125LF](#) [77709-321LF](#) [77709-727LF](#) [77709-322LF](#) [77709-124LF](#) [77709-320LF](#) [77709-129LF](#)  
[77709-332LF](#) [77709-331LF](#) [77709-128LF](#) [77709-336LF](#)