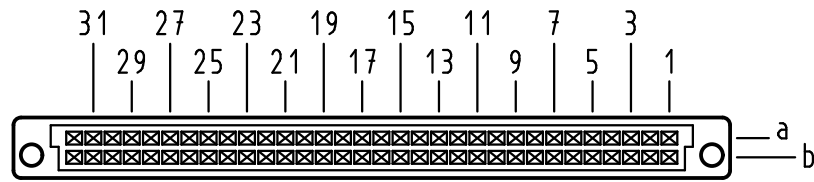


Alle Rechte vorbehalten/ All rights reserved

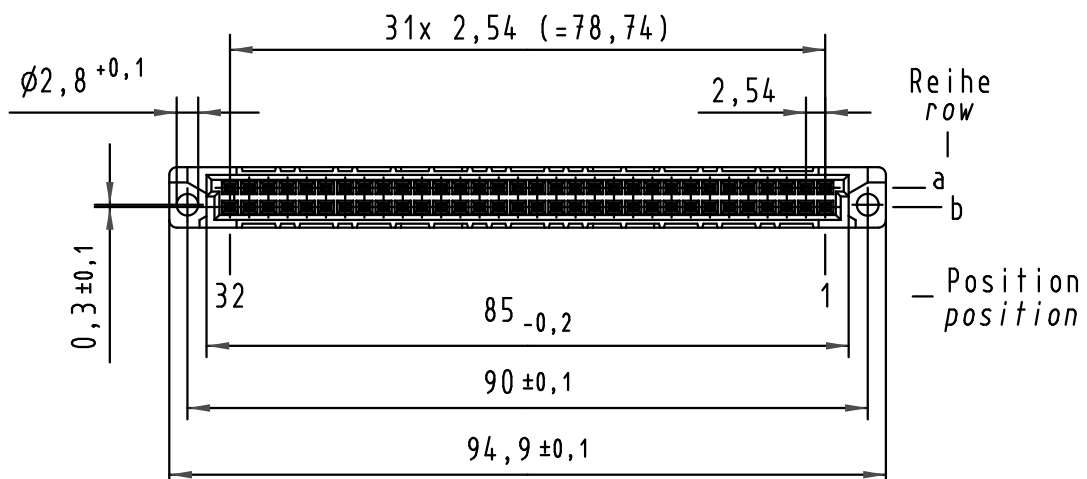
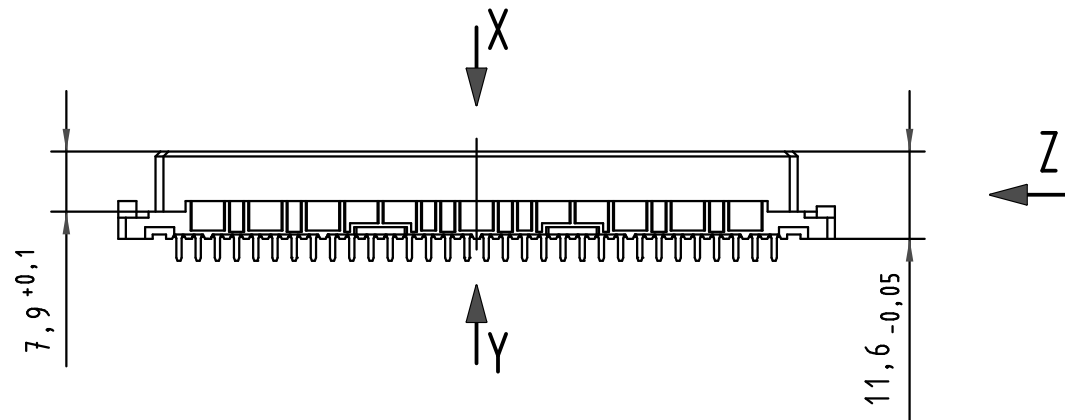
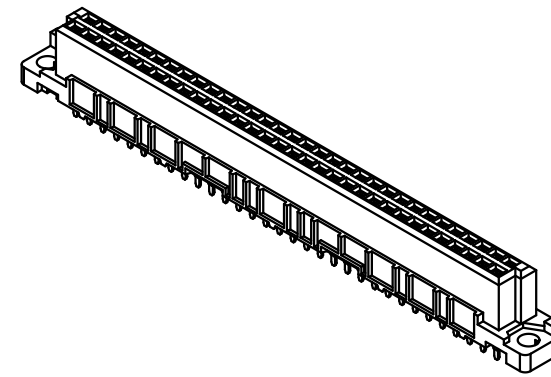
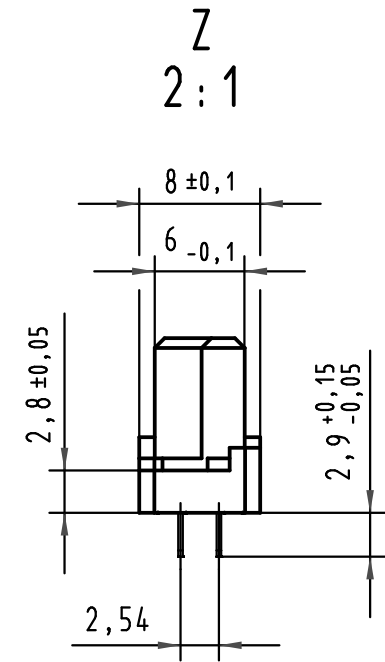
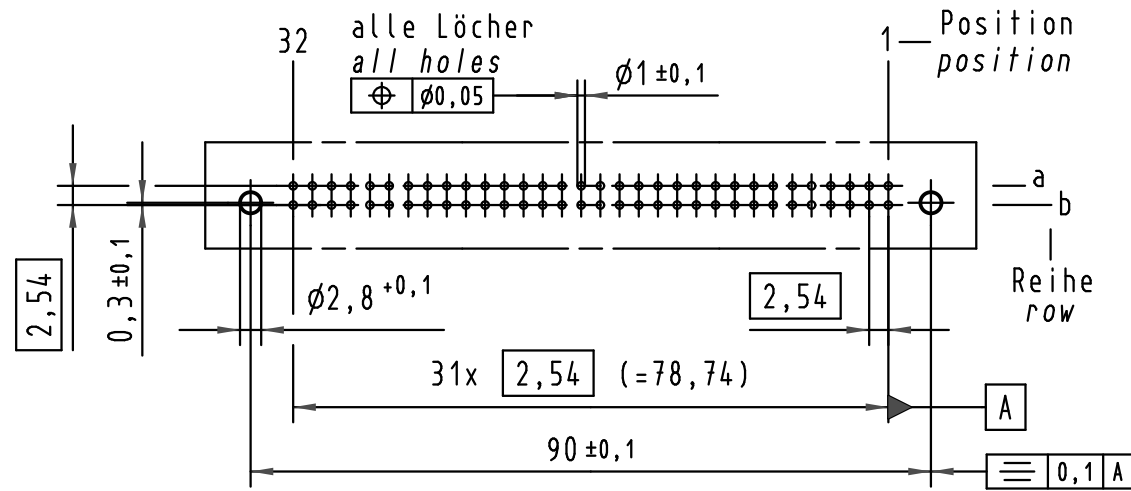
X Kontaktanordnung Contact arrangement



64 Einlöt-Kontakte
64 solder-contacts

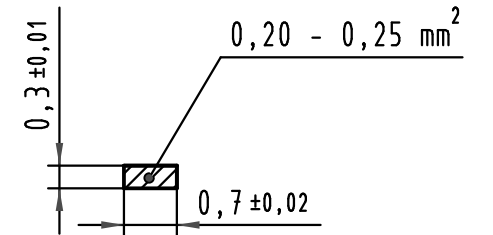
- ☒ = Einlöt-Kontakt
= solder-contact
- = Kontaktposition nicht belegt
= position without contact

X (Lochbild) (Board drillings)



Y 10:1

Querschnitt der
Lötanschlüsse:
cross-section of
solder terminations:



-	-	-
09 02 264 6824	2	Au über/over Ni
09 02 264 2824	1	Au über/over Ni
Bestell-Nr. part-no.	Anforderungsstufe nach IEC performance level acc.to IEC	Kontaktoberfläche contact plating

All Dimensions in mm Original Size DIN A 3			Techn. Character.			Nicht tolerierte Maße/Free size tolerances IEC 60603-2		
				Dat.	Name	Maßstab/Scale		
			Detail.	12.10.99	Rie.	1:1 2:1		
			Insp.	12.10.99	Pa.			
34306	02.07.07	LehT	Stand.			har-bus B Federleiste Einlöt 2,9 , 64 pol. har-bus B female connector solder 2,9 , 64 pol.		
30231	08.02.02	Rie.						
26962	24.01.00	Rie.				TB 09 02 264 x824		
26091								
Mod.	Dat.	Name	HARTING Electronics GmbH & Co. KG D-32339 ESPELKAMP			Blatt/ page		
			Sub.					