

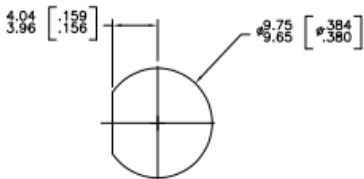
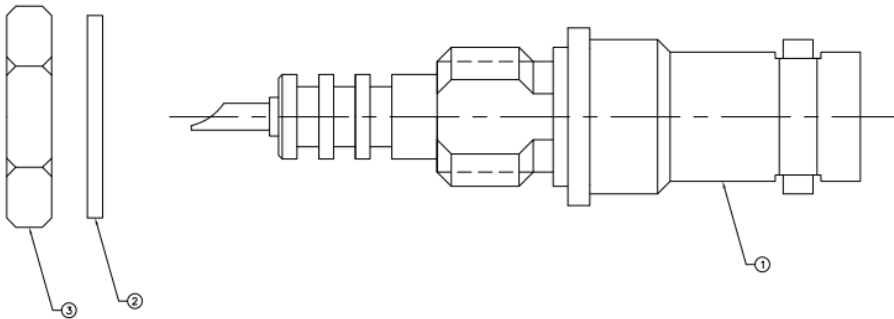
Professionally approved products.

## Datasheet

# TE Connectivity Straight Panel Mount SHV Connector, jack, Solder Termination

RS Stock number [713-1013](#)

Dimensions: mm



RECOMMENDED PANED CUTOUT  
SCALE 4:1

## Specifications

- Body Orientation: Straight
- Contact Plating: Gold
- Gender: Female
- Mounting Type: Panel Mount
- Termination Method: Solder