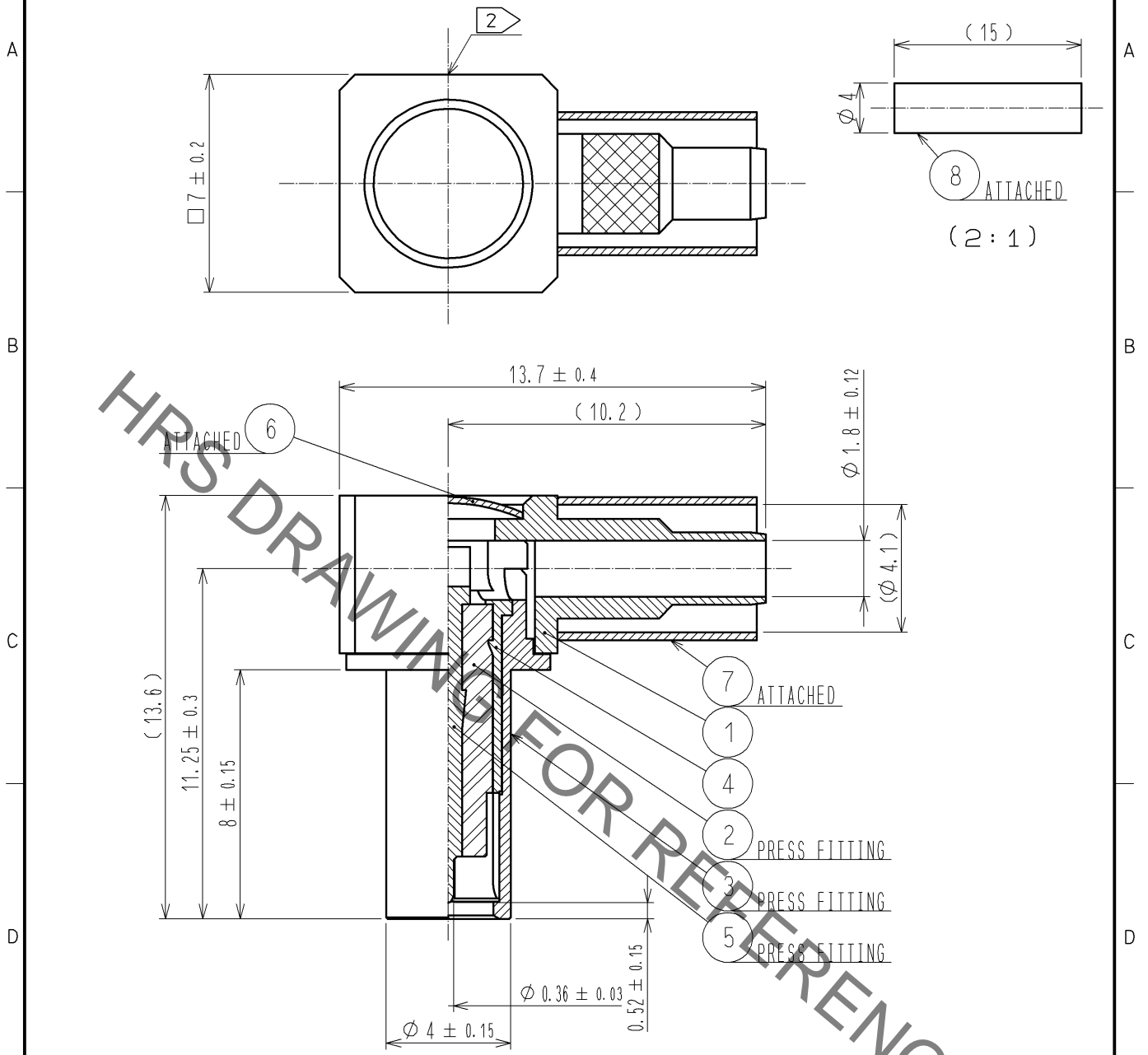


Jan.1.2022 Copyright 2022 HIROSE ELECTRIC CO., LTD. All Rights Reserved.
In case of consideration for using Automotive equipment / device which demand high reliability, kindly contact our sales window correspondents.

ASSEMBLY PROCEDURE : ETAD-J0070

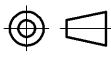


ASSEMBLY TOOL : FOR THE OUTER CONTACT HT303/PO-P-2-T 
FOR THE COVER UM-T-1



NOTE 1. FOR THE USE OF THIS PRODUCT, PUSH IT ON MS-162

 MARKING HRS

4	PHOSHOR BRONZE	NICKEL	8	POLYOLEFIN	HEAT SHRINK TUBING		
3	PHOSHOR BRONZE	NICKEL	7	COPPER	NICKEL		
2	PTFE		6	BRASS	NICKEL		
1	BRASS	NICKEL	5	PHOSHOR BRONZE	GOLD		
NO.	MATERIAL	FINISH .	REMARKS	NO.	MATERIAL	FINISH .	REMARKS

UNITS mm		SCALE 5 : 1	COUNT  1	DESCRIPTION OF REVISIONS DIS-J-001288	DESIGNED RI. SATO	CHECKED TY. OZAKI	DATE 11. 02. 07
HRS HIROSE ELECTRIC CO., LTD. APPROVED : KJ. KAWAMURA 05. 08. 25 CHECKED : TY. OZAKI 05. 08. 25 DESIGNED : YH. MATSUO 05. 08. 24 DRAWN : YH. MATSUO 05. 08. 24				DRAWING NO. EDC4-180547-00 PART NO. MS-162-C(LP)-1 CODE NO. CL358-0222-4-00  1/1			

Mouser Electronics

Authorized Distributor

Click to View Pricing, Inventory, Delivery & Lifecycle Information:

[Hirose Electric:](#)

[MS-162-C\(LP\)-1](#)