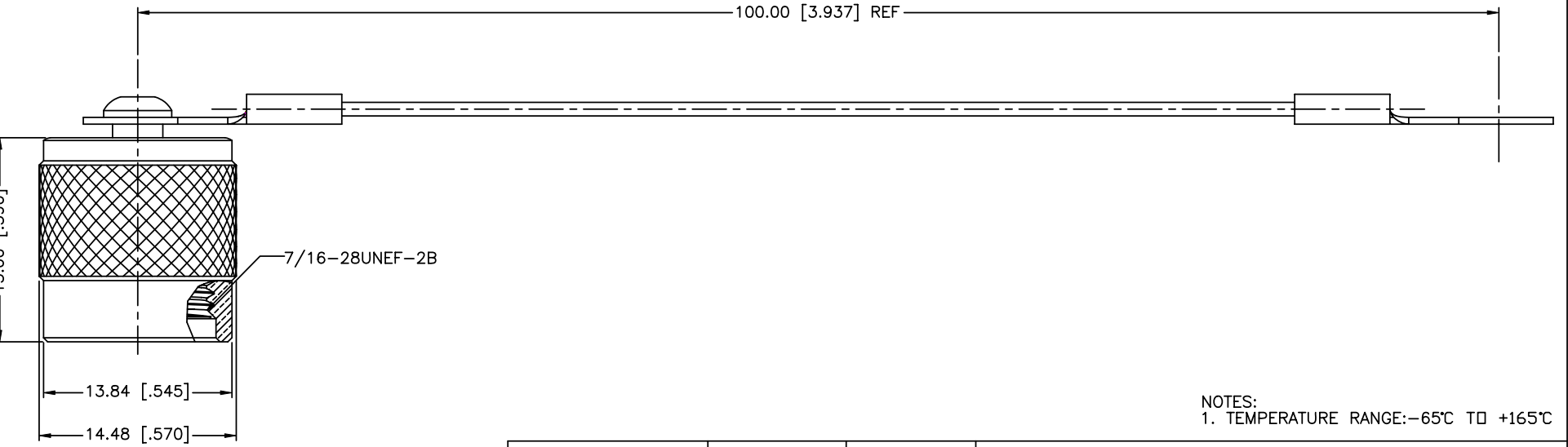
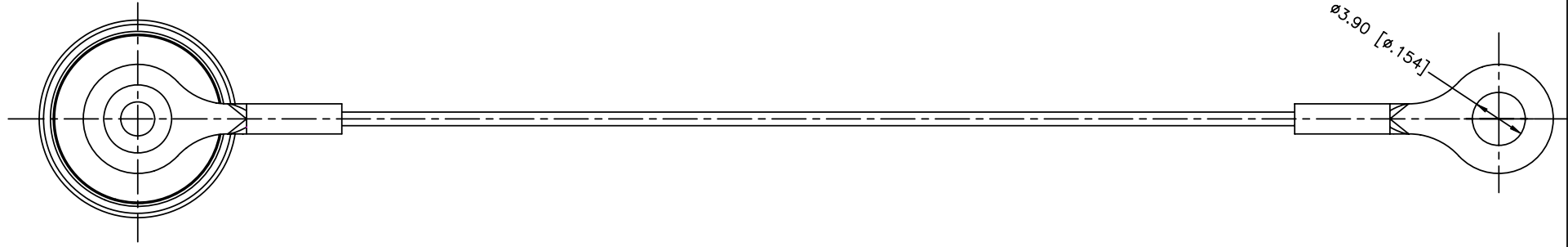
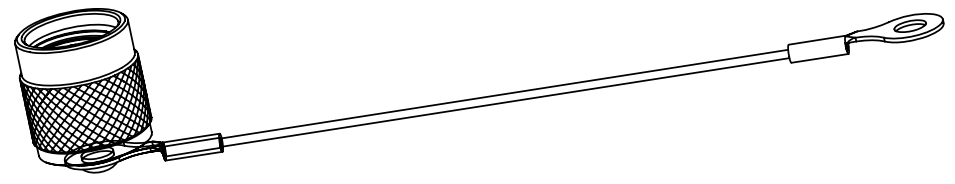


REV.	DATE	ECR NO.	DESCRIPTION
NC	04/25/12	XXXXXX	INITIAL RELEASE



NOTES:
1. TEMPERATURE RANGE: -65°C TO +165°C

Amphenol Connex

DESCRIPTION	MATERIAL	FINISH	QTY
5 GASKET	SILICONE RUBBER	RED	1
4 WASHER	BRASS	NICKEL	1
3 CHAIN	STAINLESS STEEL	PASSIVATED	1
2 RIVET	BRASS	NICKEL	1
1 BODY	BRASS	NICKEL	1

UNLESS OTHERWISE SPECIFIED DIMENSIONS ARE IN MILLIMETERS. DIMENSIONS IN [] ARE IN INCHES AND FOR CUSTOMER REFERENCE ONLY.

UNLESS OTHERWISE SPECIFIED TOLERANCES FOR MILLIMETERS ARE:
0.5 - 8mm ± 0.20mm
8 - 30mm ± 0.40mm
30 - 120mm ± 0.50mm

UNLESS OTHERWISE SPECIFIED TOLERANCES FOR INCHES ARE:
.020 - .315 = ± 0.007"
.315 - 1.180 = ± 0.015"
1.180 - 4.724 = ± 0.020"

DO NOT SCALE DRAWING

APPROVALS	DATE
DRAWN I.XU	04/25/12
CHECKED	
ISSUED	
SHEET 1 OF 1	
CAD FILE	
C:/CONNEX/202101-11.DWG	

PART DESCRIPTION
TNC MALE CAP WITH WIRE CHAIN
PART NO.
202101-11
DWG. NO.
202101-11 .DWG
REV.
NC
SIZE
A
SCALE
NA

Mouser Electronics

Authorized Distributor

Click to View Pricing, Inventory, Delivery & Lifecycle Information:

[Amphenol:](#)

[202101-11](#)