

Product Change Notification

Beijing, 17 October 2012

PCN n°: PCN-016_2012_1-OMTB11112901

Spacer adding near to the connector + additional modifications (PCB outline + PCBA components + inside the case)

HAT models

Based on the JEDEC JESD46-B standard

Dear customer,

To answer to continuous market requirement for improved performances, and in a permanent effort to improve the quality of its products, LEM intends to proceed to some modifications on **HAT** models.

This letter is to notify you about our planned procedure to handle this change.

Concerned products:

HAT 1000-S; HAT 1000-S/SP1; HAT 1000-S/SP18; HAT 1000-S/SP2;

HAT 1092-S/SP6; HAT 1092-T/SP17;

HAT 1200-S; HAT 1200-S/SP1;

HAT 1456-S/SP6; HAT 1456-T/SP17;

HAT 1500-S; HAT 1500-S/SP1;

HAT 163-S/SP6; HAT 163-T/SP17;

HAT 200-S; HAT 200-S/SP1;

HAT 2097-T/SP17;

HAT 2184-S/SP6; HAT 2184-T/SP17;

HAT 320-S/SP6;

HAT 400-S; HAT 400-S/SP1;

HAT 430-S;

HAT 481-S/SP6; HAT 481-T/SP17;

HAT 500-S; HAT 500-S/SP1;

HAT 520-S;

HAT 600-S; HAT 600-S/SP1;

HAT 728-S/SP6; HAT 728-T/SP17;

HAT 750-S;

HAT 800-S; HAT 800-S/SP1;

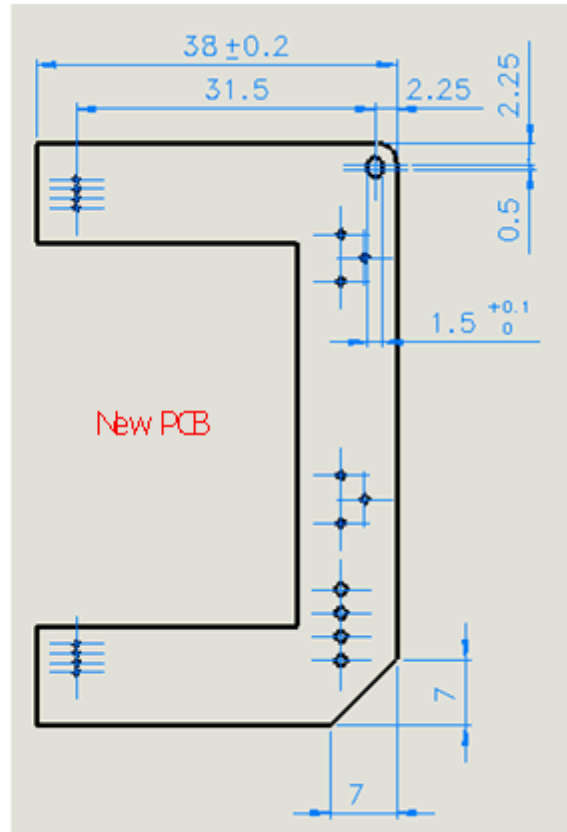
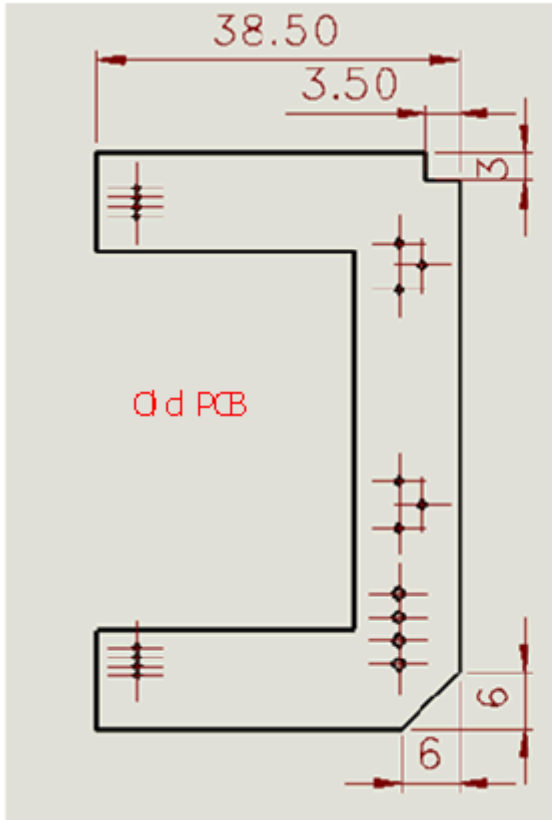
HAT 850-S;

From expected date: **Beginning of March 2013**

Change:

➤ **Description of the technical change:**

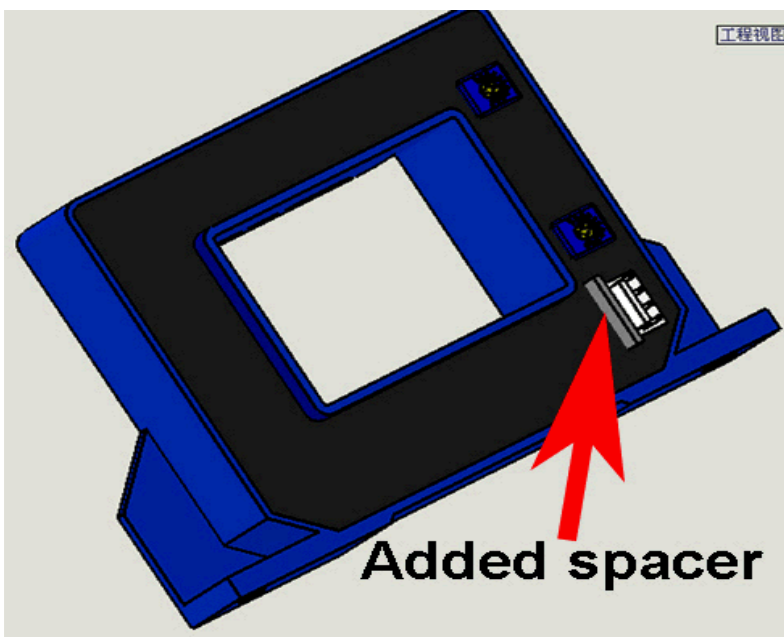
1- PCB outline (no change on the layout)

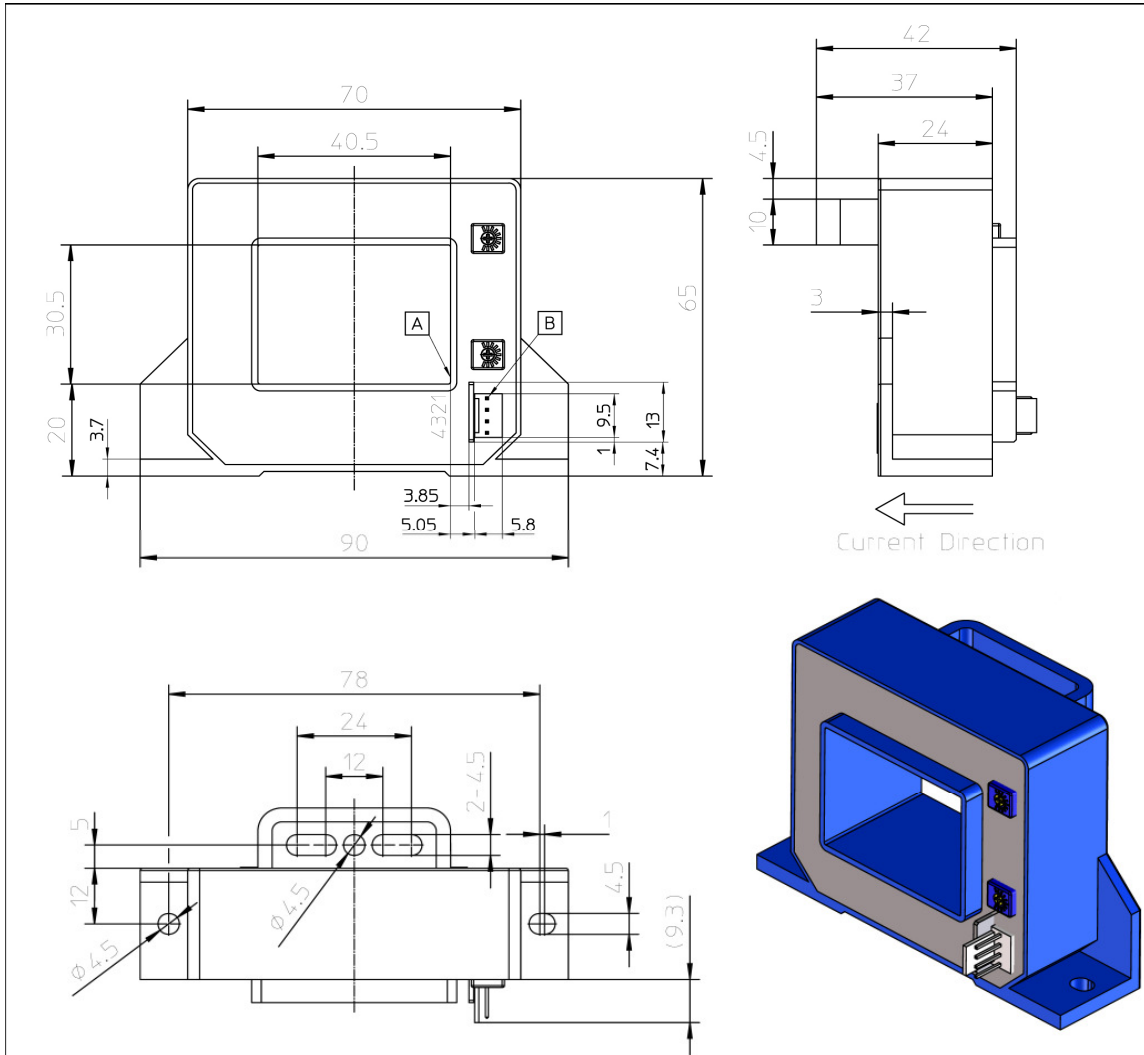


2- PCBA: Components change to enlarge the operating temperature range to -40°C --> +105°C.

3- Case: Only few modifications inside the case as ribs adding. No external dimensions change.

4- Spacer adding near to the connector.





This new mechanical drawing is enclosed in JPEG format in annex.

A new data sheet when change will occur is enclosed in annex.

➤ ***Reason of the technical change:***

- 1- To improve manufacturing process.**
- 2- To enlarge the operating temperature range to -40°C --> +105°C.**
- 3- To improve manufacturing process.**
- 4- To increase creepage and clearance distances.**

Impact on the product:

- On the form: **YES with the spacer adding**
- On the fit: NO
- On the function: **YES: Electrical offset change from +/- 20 mV to +/- 30 mV**
- On the reliability: NO

Test report:

To valid this modification, tests have been done as per the enclosed validation test report.

Schedule of the modifications:

Start of delivery of modified products	Beginning of March 2013
--	--------------------------------

Sincerely yours,

Stéphane ROLLIER
Product Manager