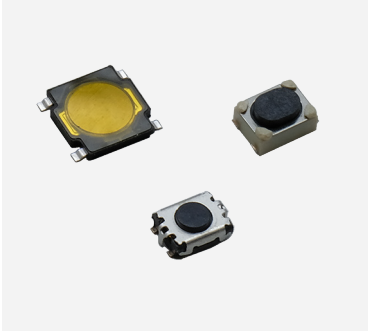


NEW

MICROMINIATURE SMT TOP ACTUATED TACT SWITCH

# RK Tactile

Product Description	Operating Force	Life Cycles
RKB2SJM250SMTR LFS	180 gf	100,000
RKB2SJK250SMTR LFS	250 gf	50,000
RKB2SJG250SMTR LFS	400 gf	100,000
RKA2SGM055SMTR LFS	160 gf	500,000
RKA2SGK055SMTR LFS	250 gf	200,000
RKA2SGG055SMTR LFS	400 gf	100,000
RKA2SGS055SMTR LFS	540 gf	100,000
RKC GG140 SMTR LFS	450 gf	200,000
RKC GG140 G SMTR LFS	450 gf	200,000



## Product Overview

RK series is low profile microminiature SMT top actuated tact switch with different choices of actuation force and long life cycle. The switch is ideal for applications that need a high density of components in limited PCB space, such as automotive keyfob, navigation and health & medical devices. The compact top-actuated RK series comes in various product sizes (RKA2: 4.5 x 4.5 x 0.55 mm, RKB2: 4.2 x 3.2 x 2.5 mm, RKC: 3.5 x 2.6 x 1.4 mm). The RK series is available in 6 actuation forces (160, 180, 250, 400, 450 & 540 gf), allowing customers easily integrate into different designs.

More information is always searchable on C&K website [www.ckswitches.com](http://www.ckswitches.com)

## Key Product Features

- Low profile & microminiature package.
- SMT termination.
- Hard actuator.
- 160, 180, 250, 400, 450 & 540 gf.
- Life cycles up to 500K.

## Applications

- Keyfob
- Navigation
- Health & medical devices

## What are your initial requirements?

- What product size do you need?
- Can RKA2/RKB2/RKC fulfil your design need?
- What operation force do you need?
  - 160, 180, 250, 400, 450 & 540 gf actuation forces