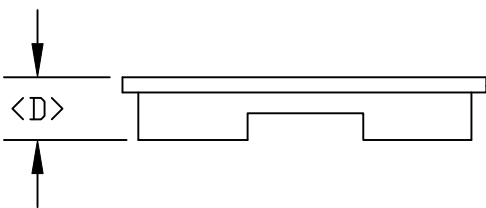
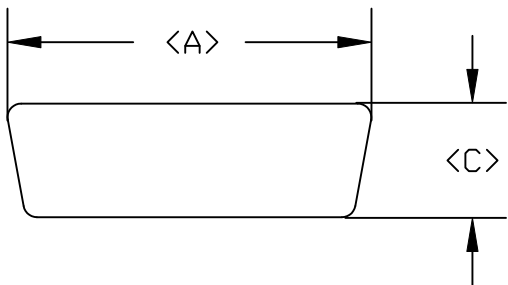


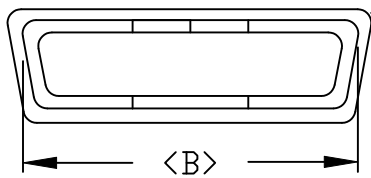
DESCRIPTION: DUST COVER FEMALE

DIMENSIONS

	A	B	C	D
9	.887	.783	.520	.262
	22.53	19.88	13.21	6.65
15	1.222	1.113	.520	.262
	31.03	28.27	13.21	6.65
25	1.752	1.645	.520	.262
	44.51	41.79	13.21	6.65
37	2.420	2.310	.520	.283
	61.47	58.67	13.21	7.19
50	2.154	2.154	.543	.315
	54.70	54.7	13.80	8.00



50 POSITION HAS NO LIP



50 POSITION HAS NO LIP

PART NUMBER

- 09 160-000-209R000
- 15 160-000-215R000
- 25 160-000-225R000
- 37 160-000-237R000
- 50 160-000-250L000 (DISCONTINUED)

MATERIAL:
 PLASTIC: PE
 RoHS COMPLIANT

	THESE DRAWINGS AND SPECIFICATIONS ARE THE PROPERTY OF NorComp AND SHALL NOT BE REPRODUCED, COPIED OR USED AS THE BASIS FOR THE MANUFACTURE OF SALE OF APPARATUS WITHOUT WRITTEN PERMISSION.		DRAWN: PAM JENKINS	DATE: 12-05-05	
	<h1>NorComp</h1>			CHECKED:	DATE:
SCALE:				SHEET 1 OF 1	REV 2
DWG NO. 160-000-2YYR000					

Mouser Electronics

Authorized Distributor

Click to View Pricing, Inventory, Delivery & Lifecycle Information:

[NorComp:](#)

[160-000-225R000](#) [160-000-209R000](#) [160-000-215R000](#) [160-000-237R000](#) [160-000-250R000](#)