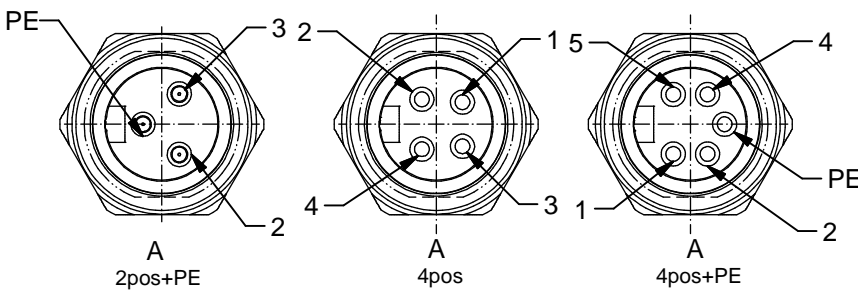


**Technical specification:**

Rated voltage: IEC 60664-1	300 V	
Overvoltage category: IEC 60664-1	2	
Overvoltage: IEC 60664-1	2,7 kV	
Current rating: IEC 60512-3 at 40°C	AWG 18 8 A	AWG 16 12 A
Insulation resistance: IEC 60512	≥100 MΩ	
Pollution degree: IEC 60664-1	3/2	
Degree of protection: IEC 60529	IP 67, in mated condition	
Temperature range: IEC 60664-1	-30°C ... +75°C	
Mating cycles: IEC 60512-9a	≥100	
Termination:	crimped	

**Materials:**

Contact:	CuZn
Contact plating:	Nickel, gold plated
Contact carrier:	TPU, UL 94
Sealing:	FPM
Socket housing:	CuZn, nickel plated
Counter nut:	CuZn, nickel plated



**Contact assignment:**

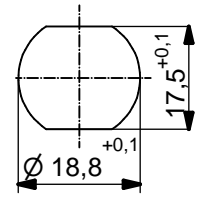
- PE ■ green-yellow
- 2 ■ brown
- 3 ■ blue

**Contact assignment:**

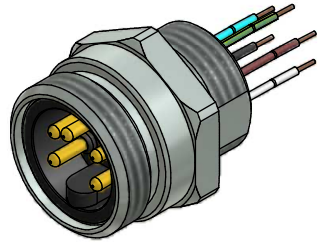
- 1 ■ brown
- 2 ■ white
- 3 ■ blue
- 4 ■ black

**Contact assignment:**

- 1 ■ black
- 2 ■ blue
- PE ■ green-yellow
- 4 ■ brown
- 5 ■ white



Minimum wall thickness 2,5mm, alternativ panel cut-out d=18,8



Part no:	Description:	Pos	Wire:
41-40024	SAL - 7/8 - FS2PE - 0,5 - 11	3	AWG 18 PVC, UL
41-40025	SAL - 7/8 - FS4 - 0,5 - 11	4	AWG 18 PVC, UL
41-40026	SAL - 7/8 - FS4PE - 0,5	5	AWG 18 PVC, UL
41-40033	SAL - 7/8 - FS2PE - 0,5/150 - 11	3	AWG 16 PVC, UL
41-40034	SAL - 7/8 - FS4 - 0,5/150 - 11	4	AWG 16 PVC, UL
41-40035	SAL - 7/8 - FS4PE - 0,5/150 - 11	5	AWG 16 PVC, UL

DO NOT ALTER CAD DRAWING BY HAND Directive 2002/95/EC RoHS compliant	Index: d 18.10.11 fro Ä4130 Temperatur changed	dim. in mm	<b>title:</b> <b>Male socket 7/8" with wire, frontmounting, PG11</b>						
	tolerance of wire: L ≤ 0,5m: L + 20mm L > 0,5m: L + 4%	<table border="1" style="font-size: 8px; width: 100%;"> <tr> <td>date</td> <td>name</td> </tr> <tr> <td>drawn 08.12.08</td> <td>Fromm</td> </tr> <tr> <td>appd. 08.12.08</td> <td>W.Schmidt</td> </tr> </table>		date	name	drawn 08.12.08	Fromm	appd. 08.12.08	W.Schmidt
	date	name							
	drawn 08.12.08	Fromm							
appd. 08.12.08	W.Schmidt								
<table border="0"> <tr> <td>general tolerance:</td> <td>0 ± 0,50mm</td> </tr> <tr> <td></td> <td>0,0 ± 0,25mm</td> </tr> <tr> <td></td> <td>0,00 ± 0,10mm</td> </tr> </table>	general tolerance:	0 ± 0,50mm		0,0 ± 0,25mm		0,00 ± 0,10mm	<b>CONEC</b> ®	<b>part no:</b>	
general tolerance:	0 ± 0,50mm								
	0,0 ± 0,25mm								
	0,00 ± 0,10mm								
THIS DRAWING MAY NOT BE COPIED OR REPRODUCED IN ANY WAY, AND MAY NOT BE PASSED ON TO A THIRD PARTY WITHOUT WRITTEN PERMISSION. OWNERSHIP AND COPYRIGHT OF CONEC GmbH									

# Mouser Electronics

Authorized Distributor

Click to View Pricing, Inventory, Delivery & Lifecycle Information:

[Amphenol:](#)

[41-40035](#) [41-40024](#) [41-40025](#) [41-40033](#) [41-40026](#) [41-40034](#)