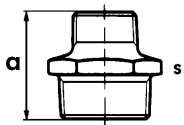


# 245

## Hexagon nipple

ISO N8

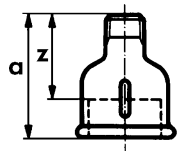
reducing



Dimension		Code	a	s
1	2			
S 1/4 - 1/8	□	<b>770 245 115</b>	35	17
V 1/4 - 1/8	□	<b>770 245 215</b>		
S 3/8 - 1/8	□	<b>770 245 116</b>	34	19
V 3/8 - 1/8	□	<b>770 245 216</b>		
• S 3/8 - 1/4	□	<b>770 245 117</b>	38	19
• V 3/8 - 1/4	□	<b>770 245 217</b>		
• S 1/2 - 1/4		<b>770 245 118</b>	44	22
• V 1/2 - 1/4		<b>770 245 218</b>		
• S 1/2 - 3/8		<b>770 245 119</b>	44	22
• V 1/2 - 3/8		<b>770 245 219</b>		
S 3/4 - 1/4		<b>770 245 120</b>	43	30
V 3/4 - 1/4		<b>770 245 220</b>		
• S 3/4 - 3/8		<b>770 245 121</b>	47	30
• V 3/4 - 3/8		<b>770 245 221</b>		
• S 3/4 - 1/2		<b>770 245 122</b>	47	31
• V 3/4 - 1/2		<b>770 245 222</b>		
• S 1 - 1/2		<b>770 245 123</b>	53	36
• V 1 - 1/2		<b>770 245 223</b>		
• S 1 - 3/4		<b>770 245 124</b>	53	36
• V 1 - 3/4		<b>770 245 224</b>		
• S 1 1/4 - 1/2		<b>770 245 125</b>	57	46
• V 1 1/4 - 1/2		<b>770 245 225</b>		
• S 1 1/4 - 3/4		<b>770 245 126</b>	57	46
• V 1 1/4 - 3/4		<b>770 245 226</b>		
• S 1 1/4 - 1		<b>770 245 127</b>	57	46
• V 1 1/4 - 1		<b>770 245 227</b>		
• S 1 1/2 - 3/4		<b>770 245 128</b>	59	50
• V 1 1/2 - 3/4		<b>770 245 228</b>		
• S 1 1/2 - 1		<b>770 245 129</b>	59	50
• V 1 1/2 - 1		<b>770 245 229</b>		
• S 1 1/2 - 1 1/4		<b>770 245 130</b>	59	50
• V 1 1/2 - 1 1/4		<b>770 245 230</b>		
• S 2 - 1		<b>770 245 131</b>	68	65
• V 2 - 1		<b>770 245 231</b>		
• S 2 - 1 1/4		<b>770 245 132</b>	68	65
• V 2 - 1 1/4		<b>770 245 232</b>		
• S 2 - 1 1/2		<b>770 245 133</b>	68	65
• V 2 - 1 1/2		<b>770 245 233</b>		
S 2 1/2 - 1 1/2		<b>770 245 134</b>	75	80
V 2 1/2 - 1 1/2		<b>770 245 234</b>		
• S 2 1/2 - 2		<b>770 245 135</b>	75	80
• V 2 1/2 - 2		<b>770 245 235</b>		
• S 3 - 2		<b>770 245 136</b>	83	95
• V 3 - 2		<b>770 245 236</b>		
• S 3 - 2 1/2		<b>770 245 137</b>	83	95
• V 3 - 2 1/2		<b>770 245 237</b>		
S 4 - 3		<b>770 245 138</b>	93	120
V 4 - 3		<b>770 245 238</b>		

# 246

Socket

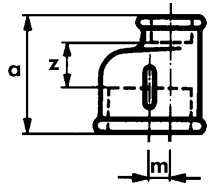


Dimension		Code	a	s	z
ISO M4	1	2			
reducing	S 1/4 - 1/8 □	770 246 115	32	17	22
	V 1/4 - 1/8 □	770 246 215			
•	S 3/8 - 1/4 □	770 246 116	35	22	25
	V 3/8 - 1/4 □	770 246 216			
•	S 1/2 - 1/4	770 246 117	43		30
	V 1/2 - 1/4	770 246 217			
•	S 1/2 - 3/8	770 246 118	43		30
	V 1/2 - 3/8	770 246 218			
•	S 3/4 - 3/8	770 246 119	48		33
	V 3/4 - 3/8	770 246 219			
•	S 3/4 - 1/2	770 246 120	48		33
	V 3/4 - 1/2	770 246 220			
•	S 1 - 1/2	770 246 121	55		38
	V 1 - 1/2	770 246 221			
•	S 1 - 3/4	770 246 122	55		38
	V 1 - 3/4	770 246 222			
•	S 1 1/4 - 1/2	770 246 123	60		41
	V 1 1/4 - 1/2	770 246 223			
•	S 1 1/4 - 3/4	770 246 124	60		41
	V 1 1/4 - 3/4	770 246 224			
•	S 1 1/4 - 1	770 246 125	60		41
	V 1 1/4 - 1	770 246 225			
•	S 1 1/2 - 3/4	770 246 126	60		41
	V 1 1/2 - 3/4	770 246 226			
•	S 1 1/2 - 1	770 246 127	63		44
	V 1 1/2 - 1	770 246 227			
•	S 1 1/2 - 1 1/4	770 246 128	63		44
	V 1 1/2 - 1 1/4	770 246 228			
•	S 2 - 1	770 246 129	70		46
	V 2 - 1	770 246 229			
•	S 2 - 1 1/4	770 246 130	70		46
	V 2 - 1 1/4	770 246 230			
•	S 2 - 1 1/2	770 246 131	70		46
	V 2 - 1 1/2	770 246 231			
•	S 2 1/2 - 1 1/2	770 246 132	83		56
	V 2 1/2 - 1 1/2	770 246 232			
•	S 2 1/2 - 2	770 246 133	80		53
	V 2 1/2 - 2	770 246 233			
•	S 3 - 2	770 246 134	87		57
	V 3 - 2	770 246 234			
•	S 3 - 2 1/2	770 246 135	91		61
	V 3 - 2 1/2	770 246 235			

# 260

Socket, eccentric

reducing



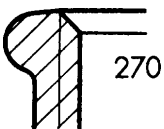
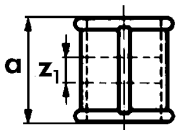
Dimension		Code	a	z	m
1	2				
S	$3/4 - 1/2$	770 260 122	41	13	3
V	$3/4 - 1/2$	770 260 222			
S	$1 - 1/2$	770 260 115	45	15	6
V	$1 - 1/2$	770 260 215			
S	$1 - 3/4$	770 260 116	45	13	3,5
V	$1 - 3/4$	770 260 216			
S	$1 1/4 - 1/2$	770 260 117	50	18	11
V	$1 1/4 - 1/2$	770 260 217			
S	$1 1/4 - 3/4$	770 260 118	50	16	8
V	$1 1/4 - 3/4$	770 260 218			
S	$1 1/4 - 1$	770 260 119	50	14	5
V	$1 1/4 - 1$	770 260 219			
S	$1 1/2 - 1$	770 260 121	56	20	7,5
V	$1 1/2 - 1$	770 260 221			
S	$1 1/2 - 1 1/4$	770 260 124	56	18	3
V	$1 1/2 - 1 1/4$	770 260 224			
S	$2 - 1/2$	770 260 125	65	28	21
V	$2 - 1/2$	770 260 225			
S	$2 - 1$	770 260 127	65	24	14
V	$2 - 1$	770 260 227			
S	$2 - 1 1/4$	770 260 128	65	22	10
V	$2 - 1 1/4$	770 260 228			
S	$2 - 1 1/2$	770 260 129	65	22	7
V	$2 - 1 1/2$	770 260 229			

# 270

Socket

iso M2

equal

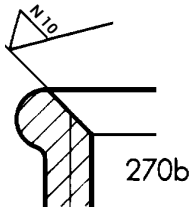


Dimension		Code	a	s*	z <sub>1</sub>
•S	$1/8$ □	770 270 101	25	17	11
•V	$1/8$ □	770 270 201			
•S	$1/4$ □	770 270 102	27	19	7
•V	$1/4$ □	770 270 202			
•S	$3/8$	770 270 103	30		10
•V	$3/8$	770 270 203			
•S	$1/2$	770 270 104	36		10
•V	$1/2$	770 270 204			
•S	$3/4$	770 270 105	39		9
•V	$3/4$	770 270 205			
•S	1	770 270 106	45		11
•V	1	770 270 206			
•S	$1 1/4$	770 270 107	50		12
•V	$1 1/4$	770 270 207			
•S	$1 1/2$	770 270 108	55		17
•V	$1 1/2$	770 270 208			
•S	2	770 270 109	65		17
•V	2	770 270 209			
•S	$2 1/2$	770 270 110	74		20
•V	$2 1/2$	770 270 210			
•S	3	770 270 111	80		20
•V	3	770 270 211			
•S	4	770 270 112	94		22
•V	4	770 270 212			

\*steel parts, hexagon instead of bead

# 270b

Socket



one side chamfered larger,  
thread = fastening thread  
to ISO 228

\* is not routinely supplied  
as a piece part

Dimension	Code	a	z <sub>1</sub>
S 1/2	*	36	10
V 1/2	*		
S 3/4	*	39	9
V 3/4	*		
S 1	*	45	11
V 1	*		
S 1 1/4	*	50	12
V 1 1/4	*		
S 1 1/2	*	55	17
V 1 1/2	*		
S 2	*	65	17
V 2	*		

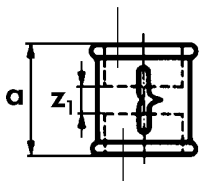
# 271

R-L  
Socket with right-  
and left-hand thread

ISO M2



Right-hand thread

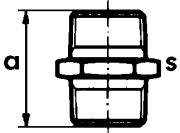


Left-hand thread

Dimension	Code	a	z <sub>1</sub>
● S 1/4 □ ▲	770 271 102	27	7
● V 1/4 □ ▲	770 271 202		
● S 3/8	770 271 103	30	10
● V 3/8	770 271 203		
● S 1/2	770 271 104	36	10
● V 1/2	770 271 204		
● S 3/4	770 271 105	39	9
● V 3/4	770 271 205		
● S 1	770 271 106	45	11
● V 1	770 271 206		
● S 1 1/4	770 271 107	50	12
● V 1 1/4	770 271 207		
● S 1 1/2	770 271 108	55	17
● V 1 1/2	770 271 208		
S 2	770 271 109	65	17
V 2	770 271 209		

# 280

Hexagon nipple

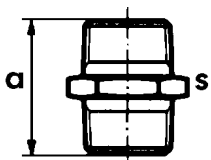


ISO N8

Dimension	Code	a	s
• S 1/8 □	770 280 101	29	17
• V 1/8 □	770 280 201		
• S 1/4 □	770 280 102	36	19
• V 1/4 □	770 280 202		
• S 3/8	770 280 103	38	22
• V 3/8	770 280 203		
• S 1/2	770 280 104	44	28
• V 1/2	770 280 204		
• S 3/4	770 280 105	47	32
• V 3/4	770 280 205		
• S 1	770 280 106	53	42
• V 1	770 280 206		
• S 1 1/4	770 280 107	57	50
• V 1 1/4	770 280 207		
• S 1 1/2	770 280 108	59	55
• V 1 1/2	770 280 208		
• S 2	770 280 109	68	70
• V 2	770 280 209		
• S 2 1/2	770 280 110	75	85
• V 2 1/2	770 280 210		
• S 3	770 280 111	83	100
• V 3	770 280 211		
• S 4	770 280 112	95	131
• V 4	770 280 212		

# 281

R-L  
Hexagon nipple with right-  
and left-hand thread

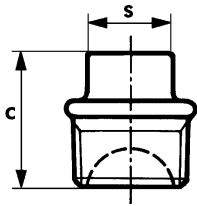


ISO N8

Dimension	Code	a	s
S 3/8 ▲	770 281 103	38	22
V 3/8	770 281 203		
• S 1/2	770 281 104	44	28
• V 1/2	770 281 204		
• S 3/4	770 281 105	47	33
• V 3/4	770 281 205		
• S 1	770 281 106	53	42
• V 1	770 281 206		
S 1 1/4	770 281 107	57	50
V 1 1/4	770 281 207		
S 1 1/2	770 281 108	59	55
V 1 1/2	770 281 208		
S 2	770 281 109	68	70
V 2	770 281 209		

# 290

Plug, beaded



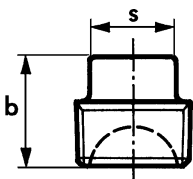
ISO T9

\* solid

Dimension	Code	c	s
• S 1/8 □ *	770 290 101	20	7
• V 1/8 □ *	770 290 201		
• S 1/4 □ *	770 290 102	24	8
• V 1/4 □ *	770 290 202		
• S 3/8	770 290 103	28	10
• V 3/8	770 290 203		
• S 1/2	770 290 104	32	11
• V 1/2	770 290 204		
• S 3/4	770 290 105	37	17
• V 3/4	770 290 205		
• S 1	770 290 106	41	19
• V 1	770 290 206		
• S 1 1/4	770 290 107	43	22
• V 1 1/4	770 290 207		
• S 1 1/2	770 290 108	44	22
• V 1 1/2	770 290 208		
• S 2	770 290 109	53	27
• V 2	770 290 209		
• S 2 1/2	770 290 110	55	32
• V 2 1/2	770 290 210		
• S 3	770 290 111	62	36
• V 3	770 290 211		
• S 4	770 290 112	73	41
• V 4	770 290 212		

# 291

Plug, plain, hollow



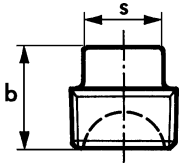
ISO T8

\* solid

Dimension	Code	b	s
• S 1/8 □ *	770 291 101	16	7
• V 1/8 □ *	770 291 201		
• S 1/4 □ *	770 291 102	18	8
• V 1/4 □ *	770 291 202		
• S 3/8 □ *	770 291 103	20	10
• V 3/8 □ *	770 291 203		
• S 1/2	770 291 104	24	11
• V 1/2	770 291 204		
• S 3/4	770 291 105	28	17
• V 3/4	770 291 205		
• S 1	770 291 106	33	19
• V 1	770 291 206		
• S 1 1/4	770 291 107	36	22
• V 1 1/4	770 291 207		
• S 1 1/2	770 291 108	37	22
• V 1 1/2	770 291 208		
• S 2	770 291 109	44	27
• V 2	770 291 209		
• S 2 1/2	770 291 110	52	32
• V 2 1/2	770 291 210		
• S 3	770 291 111	59	36
• V 3	770 291 211		
• S 4	770 291 112	66	41
• V 4	770 291 212		

# 291a

Plug, plain, solid

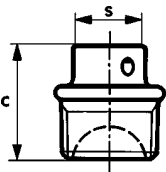


solid

Dimension	Code	b	s
S 3/4	770 292 105	28	17
V 3/4	770 292 205		
S 1	770 292 106	33	19
V 1	770 292 206		
S 1 1/4	770 292 107	36	22
V 1 1/4	770 292 207		
S 1 1/2	770 292 108	38	23
V 1 1/2	770 292 208		
S 2	770 292 109	44	27
V 2	770 292 209		

# 294

Plug with hole in the square

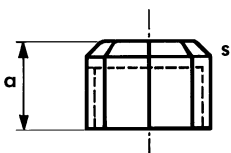


Dimension	Code	c	s
S 1/2	770 294 104	32	11
V 1/2	770 294 204		
S 3/4	770 294 105	37	17
V 3/4	770 294 205		
S 1	770 294 106	44	19
V 1	770 294 206		
S 1 1/4	770 294 107	43	22
V 1 1/4	770 294 207		
S 1 1/2	770 294 108	44	22
V 1 1/2	770 294 208		
S 2	770 294 109	53	27
V 2	770 294 209		

# 300

Cap

iso T1

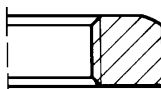
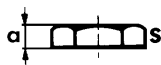


Dimension	Code	a	s
• S 1/8 □	770 300 101	14	14
• V 1/8 □	770 300 201		
• S 1/4 □	770 300 102	17	17
• V 1/4 □	770 300 202		
• S 3/8 □	770 300 103	18	22
• V 3/8 □	770 300 203		
• S 1/2	770 300 104	24	26
• V 1/2	770 300 204		
• S 3/4	770 300 105	26	32
• V 3/4	770 300 205		
• S 1	770 300 106	29	38
• V 1	770 300 206		
• S 1 1/4	770 300 107	32	47
• V 1 1/4	770 300 207		
• S 1 1/2	770 300 108	32	53
• V 1 1/2	770 300 208		
• S 2	770 300 109	37	66
• V 2	770 300 209		
• S 2 1/2	770 300 110	41	83
• V 2 1/2	770 300 210		
• S 3	770 300 111	44	96
• V 3	770 300 211		
• S 4	770 300 112	52	128
• V 4	770 300 212		

# 310

Backnut

ISO P4

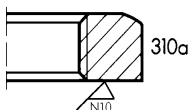
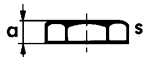


Dimension	Code	a	s
<b>G</b>			
S 1/8	770 310 101	7	19
V 1/8	770 310 201		
S 1/4	770 310 102	7,5	22
V 1/4	770 310 202		
S 3/8	770 310 103	8	27
V 3/8	770 310 203		
S 1/2	770 310 104	9	32
V 1/2	770 310 204		
S 3/4	770 310 105	10	36
V 3/4	770 310 205		
S 1	770 310 106	12	46
V 1	770 310 206		
S 1 1/4	770 310 107	13	55
V 1 1/4	770 310 207		
S 1 1/2	770 310 108	14	60
V 1 1/2	770 310 208		
S 2	770 310 109	16	75
V 2	770 310 209		
S 2 1/2	770 310 110	19	95
V 2 1/2	770 310 210		
S 3	770 310 111	22	105
V 3	770 310 211		

# 310a

Backnut,  
faced

ISO P4

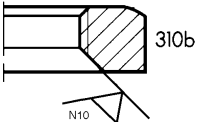
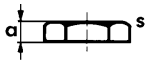


Dimension	Code	a	s
<b>G</b>			
S 1/2	770 309 104	8,5	32
V 1/2	770 309 204		
S 3/4	770 309 105	9,5	36
V 3/4	770 309 205		
S 1	770 309 106	11,5	46
V 1	770 309 206		
S 1 1/4	770 309 107	12,5	55
V 1 1/4	770 309 207		
S 1 1/2	770 309 108	13,5	60
V 1 1/2	770 309 208		
S 2	770 309 109	15,5	75
V 2	770 309 209		



# 310b

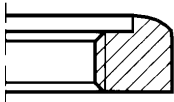
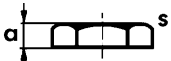
Backnut, one side heavily chamfered



Dimension	Code	a	s
<b>G</b>			
V 1/2	770 308 204	9	32
V 3/4	770 308 205	10	36
V 1	770 308 206	12	46
V 1 1/4	770 308 207	13	55
V 1 1/2	770 308 208	14	60
V 2	770 308 209	16	75

# 312

Backnut recessed

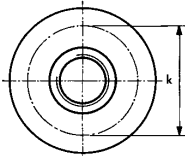
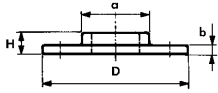


Dimension	Code	a	s
<b>G</b>			
S 1/4 □	770 312 102	7,5	22
V 1/4 □	770 312 202		
S 3/8 □	770 312 103	8	27
V 3/8 □	770 312 203		
S 1/2	770 312 104	9	32
V 1/2	770 312 204		
S 3/4	770 312 105	10	36
V 3/4	770 312 205		
S 1	770 312 106	12	46
V 1	770 312 206		
S 1 1/4	770 312 107	13	55
V 1 1/4	770 312 207		
S 1 1/2	770 312 108	14	60
V 1 1/2	770 312 208		
S 2	770 312 109	16	75
V 2	770 312 209		

## 321 Screwed flange



undrilled

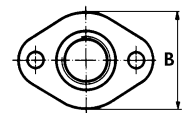
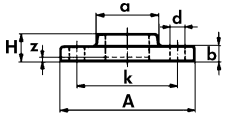


Dimension			Code	a	b	k	H	D
S	1/2	PN 1	<b>770 320 104</b>	32	5	55	13	80
V	1/2	PN 1	<b>770 320 204</b>					
S	3/4	PN 1	<b>770 320 105</b>	38	6	65	14	90
V	3/4	PN 1	<b>770 320 205</b>					
S	1	PN 1	<b>770 320 106</b>	47	9	75	17	100
V	1	PN 1	<b>770 320 206</b>					
S	1 1/4	PN 1	<b>770 320 107</b>	51	10	90	21	120
V	1 1/4	PN 1	<b>770 320 207</b>					
S	1 1/2	PN 1	<b>770 320 108</b>	56	10	100	21	130
V	1 1/2	PN 1	<b>770 320 208</b>					
S	2	PN 1	<b>770 320 109</b>	73	11	110	22	140
V	2	PN 1	<b>770 320 209</b>					

## 326 Screwed flange



undrilled, 2 hole



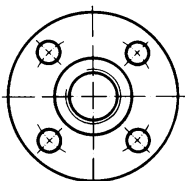
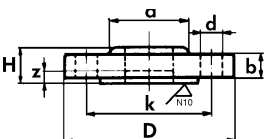
Dimension			Code	a	b	d	k	z	A	B	H
S	1/2	PN 10	<b>770 326 104</b>	32	11	11,5	55	4	80	45	17
V	1/2	PN 10	<b>770 326 204</b>								
S	3/4	PN 10	<b>770 326 105</b>	38	11	11,5	65	4	90	64	19
V	3/4	PN 10	<b>770 326 205</b>								
S	1	PN 10	<b>770 326 106</b>	46	11	11,5	75	3	100	72	20
V	1	PN 10	<b>770 326 206</b>								
S	1 1/4	PN 10	<b>770 326 107</b>	56	12	14	90	3	120	85	22
V	1 1/4	PN 10	<b>770 326 207</b>								
S	1 1/2	PN 10	<b>770 326 108</b>	63	13	14	100	4	130	95	23
V	1 1/2	PN 10	<b>770 326 208</b>								
S	2	PN 10	<b>770 326 109</b>	77	13	14	110	0	140	100	24
V	2	PN 10	<b>770 326 209</b>								

## 329 Screwed flange

to DIN 2566



drilled, 4 hole



Dimension			Code	a	b	d	k	z	H	D
S	1/2	PN 10	<b>770 329 104</b>	35	15	14	65	7	20	95
V	1/2	PN 10	<b>770 329 204</b>							
S	3/4	PN 10	<b>770 329 105</b>	45	17	14	75	9	24	105
V	3/4	PN 10	<b>770 329 205</b>							
S	1	PN 10	<b>770 329 106</b>	52	17	14	85	7	24	115
V	1	PN 10	<b>770 329 206</b>							
S	1 1/4	PN 10	<b>770 329 107</b>	60	17	18	100	7	26	140
V	1 1/4	PN 10	<b>770 329 207</b>							
S	1 1/2	PN 10	<b>770 329 108</b>	72	14	18	110	8	27	150
V	1 1/2	PN 10	<b>770 329 208</b>							
S	2	PN 10	<b>770 329 109</b>	87	16	18	125	5	29	165
V	2	PN 10	<b>770 329 209</b>							
S	2 1/2	PN 10	<b>770 329 110</b>	100	16	18	145	5	32	185
V	2 1/2	PN 10	<b>770 329 210</b>							
S	3	PN 10	<b>770 329 111</b>	115	18	18	160	6	36	200
V	3	PN 10	<b>770 329 211</b>							
S	3 *	PN 16	<b>770 329 115</b>	115	18	18	160	6	36	200
V	3 *	PN 16	<b>770 329 215</b>							
S	4 *	PN 16	<b>770 329 112</b>	140	20	18	180	2	38	220
V	4 *	PN 16	<b>770 329 212</b>							

\* 8 Loch