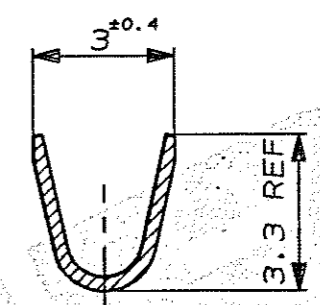
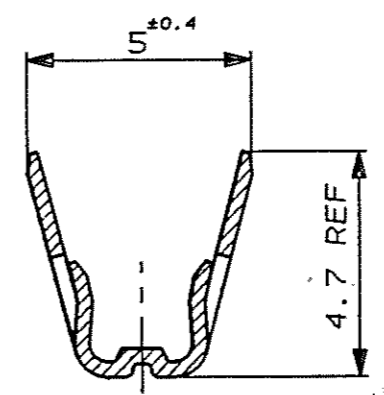
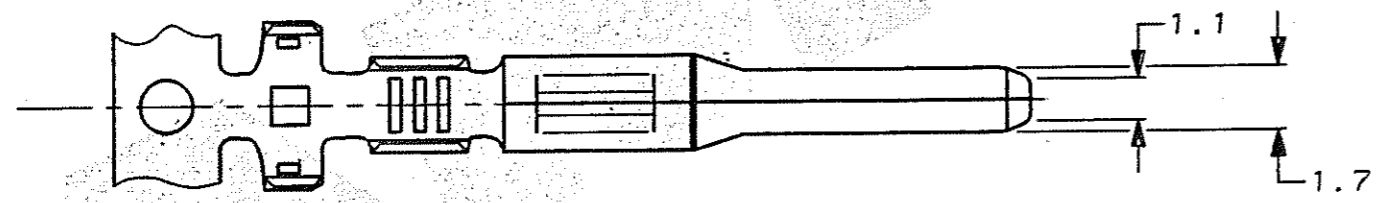


C.A.D. FILE CODE  
5. C345212.A

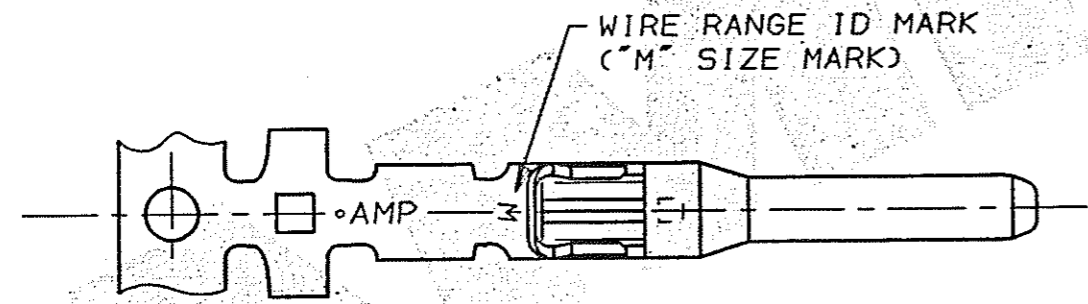
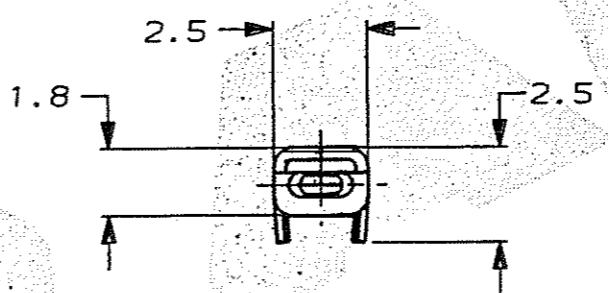
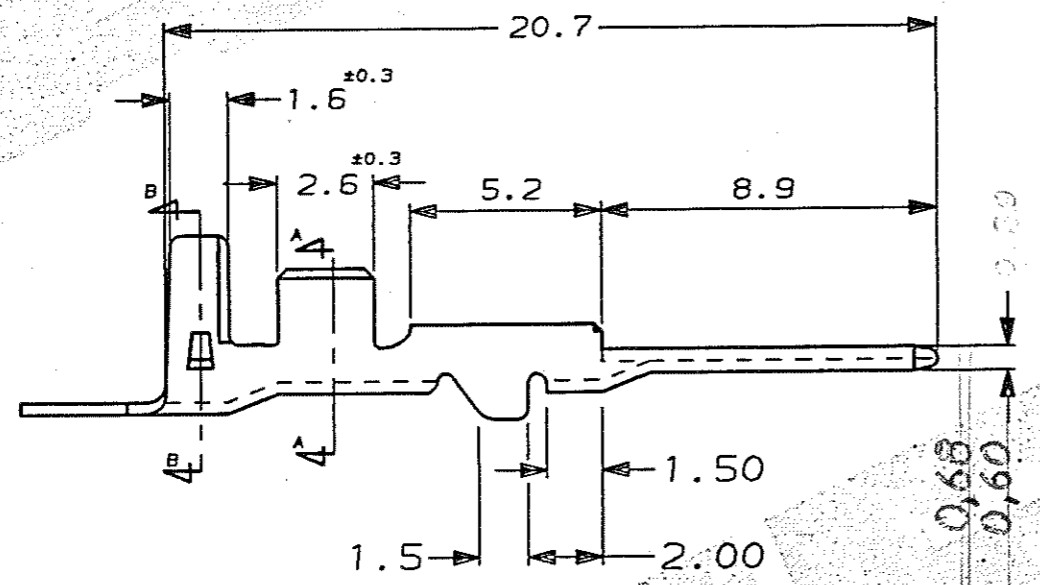
DO NOT SCALE

DIMENSIONS IN MM.



SECT B-B

SECT A-A



NOTES:-

1. WIRE DETAILS:- 0.75-1.5mm<sup>2</sup>, 1.7-2.4 INSULATION DIA.
2. SIMILAR TO PART NUMBER 173645.

PRE-TIN		BRASS		345212-1	
FINISH		MATERIAL		PART NUMBER	
CUSTOMER DWG FOR REFERENCE ONLY			© COPYRIGHT 1991 BY AMP OF GREAT BRITAIN LTD. ALL INTERNATIONAL RIGHTS RESERVED. ALL PRODUCTS MAY BE COVERED BY BRITISH AND FOREIGN PATENTS AND/OR PATENTS PENDING.		
-		TOLERANCES UNLESS OTHERWISE STATED :		DR. D.R. TERRY 16 OCT 1991	
-		DEC ± 0.5		CH. M MISTRY APP. M MISTRY	
-		ANGLES ± 1°		 of Great Britain Ltd.	
A EB00-0191-02		- 1-7-02		NAME .070 SERIES TAB CONTACT, MULTI-LOCK	
O RELEASE FOR PROD. C6323		24-8-92		SCALE LOC SIZE DWG.No.	
I M.MISTRY		16-10-91		5/1 E A3 C345212	
REV APPROVED		ECN DATE		REV SHEET	
				A 1/1	

# Mouser Electronics

Authorized Distributor

Click to View Pricing, Inventory, Delivery & Lifecycle Information:

[TE Connectivity:](#)

[345212-1](#)