

# Features

# Power Module

- Non-isolated buck/boost converter
- Up to 3000W in half brick case
- Adjustable output voltage and current
- Efficiency up to 96%
- Wide operating temperature range from -40°C to +85°C without derating
- IEC/EN62368-1 certified

**RECOM**  
DC/DC Converter

## RBBA3000

# 50 Amp Half Brick Buck/Boost converter



### Description

The RBBA3000 is a high efficiency non-isolated buck/boost converter with up to 50A output current in a half-brick case. The input voltage range is from 9-60VDC and the output voltage (0-60V) and current (0-50A) are independently set via fixed trim resistors or an external voltage. The I<sub>share</sub> pin has two functions: it can be used to monitor the load current in stand-alone applications or it can be used to connect two modules in parallel to double the maximum output current to 100A. Typical applications are 48V to 24V or 12V to 24V battery power conversion, electric vehicles, battery voltage stabilizers or high power laboratory DC power supplies. With appropriate cooling, the full power operating temperature extends from -40°C to +85°C and the RBBA3000-50 comes with RECOM's standard 2 year warranty.

### Selection Guide

| Part Number | Input Voltage Range [VDC] | Input Current max. [A] | Nom. Output Voltage [VDC] | Output Current max. [A] | Efficiency typ. <sup>(1)</sup> [%] |
|-------------|---------------------------|------------------------|---------------------------|-------------------------|------------------------------------|
| RBBA3000-50 | 9 - 60                    | 50                     | 0 - 60                    | 50                      | 96                                 |

#### Notes:

Note1: Efficiency is tested at nominal input and 24Vout at +25°C ambient

### Model Numbering

**RBBA3000-50**

└── max. Output Current

IEC/EN62368-1 certified  
EN55032 compliant  
CB Report

### Specifications (measured @ Ta= 25°C, 2.5m/s, nom. Vin, 24Vout and after warm-up unless otherwise stated)

| BASIC CHARACTERISTICS                  |                                                 |                                              |      |                        |         |
|----------------------------------------|-------------------------------------------------|----------------------------------------------|------|------------------------|---------|
| Parameter                              | Condition                                       |                                              | Min. | Typ.                   | Max.    |
| Internal Input Filter                  |                                                 |                                              |      |                        | Pi-Type |
| Input Voltage Range <sup>(2)</sup>     | nom. Vin = 48VDC                                |                                              | 9VDC |                        | 60VDC   |
| Absolute Maximum Input Voltage         | 100ms                                           |                                              |      |                        | 80VDC   |
| Undervoltage Lockout Threshold         | DC-DC ON                                        |                                              | 7VDC | 8VDC                   | 9VDC    |
|                                        | DC-DC OFF                                       |                                              | 5VDC | 6VDC                   | 7VDC    |
| Undervoltage Lockout Hysteresis        |                                                 |                                              |      | 2VDC                   |         |
| Input Current <sup>(3)</sup>           | low line to high line                           |                                              |      |                        | 50A     |
| Quiescent Current                      | no load<br>Vin = 24VDC                          | Vout = 12VDC<br>Vout = 24VDC<br>Vout = 48VDC |      | 100mA<br>90mA<br>180mA |         |
| Internal Power Dissipation             | refer to „Power Dissipation vs. Output Current“ |                                              |      |                        |         |
| Output Current Range <sup>(2)</sup>    |                                                 |                                              | 0A   |                        | 50A     |
| Output Voltage Trimming <sup>(4)</sup> |                                                 |                                              | 0VDC |                        | 60VDC   |

#### Notes:

Note2: For detail information please refer to “Safe Operating Area”

Note3: For detail information please refer to “PROTECTIONS”

Note4: For detail information please refer to “Output Voltage Trimming”

continued on next page

**Specifications** (measured @ Ta= 25°C, 2.5m/s, nom. Vin, 24Vout and after warm-up unless otherwise stated)

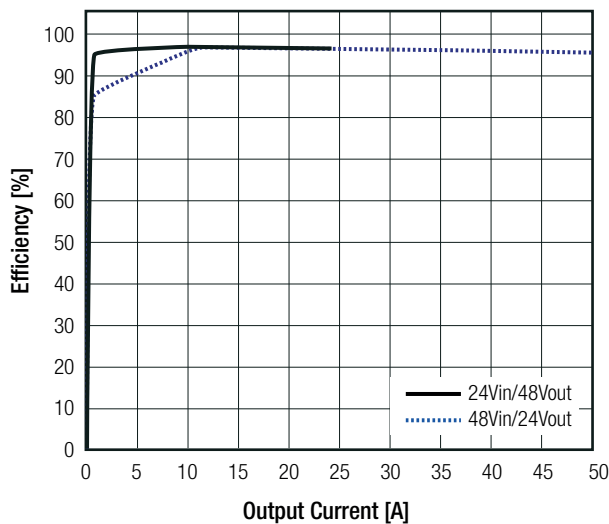
| Parameter                                        | Condition                                                            |                       | Min.                                                                | Typ.             | Max.    |
|--------------------------------------------------|----------------------------------------------------------------------|-----------------------|---------------------------------------------------------------------|------------------|---------|
| Minimum Load                                     |                                                                      |                       | 0%                                                                  |                  |         |
| Start-up time                                    | ON/OFF CTRL<br>Power Up                                              |                       |                                                                     | 30ms<br>30ms     |         |
| Rise Time                                        |                                                                      |                       |                                                                     | 300mV/ms         |         |
| ON/OFF CTRL <sup>(5)</sup>                       | nom. Vin= 48VDC                                                      | DC-DC ON<br>DC-DC OFF | 0VDC <V <sub>CTRL</sub> <0.8VDC<br>3.5VDC <V <sub>CTRL</sub> <10VDC |                  |         |
| Input Current of CTRL Pin                        | nom. Vin= 48VDC                                                      |                       |                                                                     | 1mA              |         |
| Standby Current                                  | nom. Vin= 48VDC                                                      | DC-DC OFF             |                                                                     | 2mA              |         |
| Current Monitor or Current Share <i>"Ishare"</i> | reference voltage at no load<br>reference voltage at full load (50A) |                       |                                                                     | 0.2VDC<br>2.7VDC |         |
| Internal Operating Frequency                     |                                                                      |                       | 100kHz                                                              | 280kHz           | 400kHz  |
| Output Ripple and Noise <sup>(6)</sup>           | 20MHz BW                                                             |                       |                                                                     | 100mVp-p         |         |
| Absolute Maximum Capacitive Load                 | <1 second start up                                                   |                       |                                                                     |                  | 15000µF |

**Notes:**

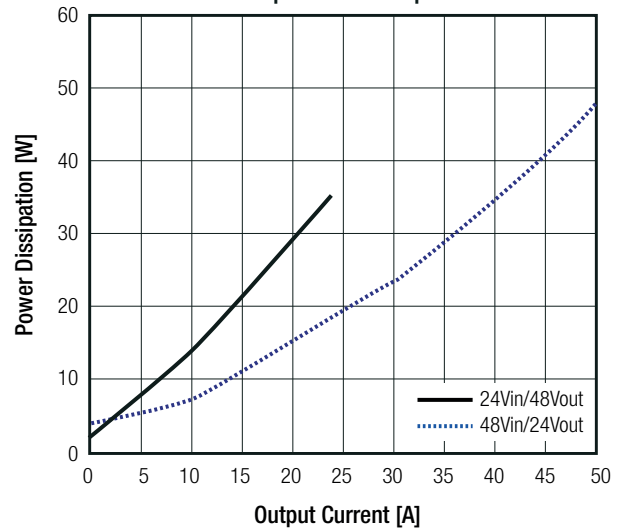
Note5: The ON/OFF CTRL is normally OFF

Note6: Measurements are made with a 100µF E-Cap across output (low ESR)

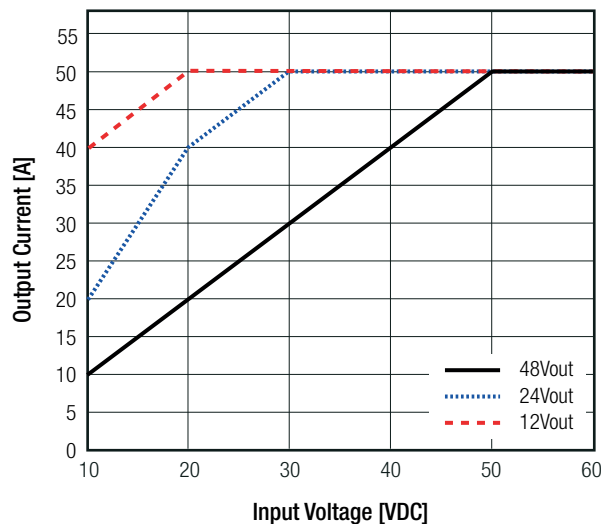
**Efficiency vs. Load**



**Power Dissipation vs. Output Current**



**Safe Operating Area**

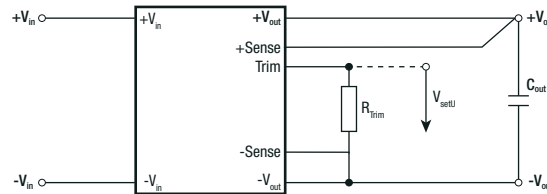


continued on next page

**Specifications** (measured @ Ta= 25°C, 2.5m/s, nom. Vin, 24Vout and after warm-up unless otherwise stated)

**Output Voltage Trimming**

The RBBA3000 series offers the feature of trimming the output voltage over a range between 0V and 60V by using precision trim resistors between the Trim and -Sense pin (1% recommended). Undriven Trim pin will set Vout to 0VDC.



- Vout<sub>max</sub> = maximum output voltage [VDC]
- Vout<sub>set</sub> = trimmed output voltage [VDC]
- k = trim up factor [ ]
- V<sub>setU</sub> = set voltage [VDC]
- V<sub>ref1</sub>, V<sub>ref2</sub> = reference voltage [VDC]
- R<sub>Trim</sub> = trim resistor [Ω]
- R<sub>1</sub>, R<sub>2</sub> = internal resistors [Ω]

| Vout <sub>max</sub> | R <sub>1</sub> | R <sub>2</sub> | k     | V <sub>ref1</sub> | V <sub>ref2</sub> |
|---------------------|----------------|----------------|-------|-------------------|-------------------|
| 60VDC               | 11k83Ω         | 10k912Ω        | 0.058 | 2.366             | 2.316             |

**Calculation:**

Additionally the Trim pin can be driven from an external voltage source:

$$R_{Trim} = \left[ \frac{R_1 \times V_{out_{max}}}{V_{out_{set}} + k \times V_{out_{max}}} \right] - R_2$$

$$V_{setU} = V_{ref1} - V_{ref2} \times \left[ \frac{V_{out_{set}}}{V_{out_{max}}} \right]$$

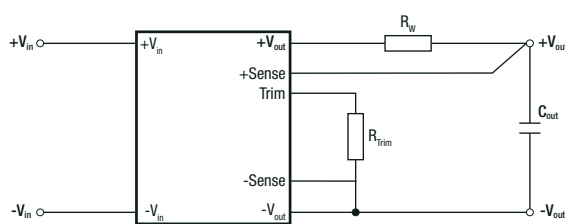
**Practical Example RBBA3000-50 (set Vout to 24VDC):**

$$R_{Trim} = \left[ \frac{11k83 \times 60}{24 + 0.058 \times 60} \right] - 10k912 = \underline{14k918\Omega}$$

$$V_{setU} = 2.366 - 2.316 \times \left[ \frac{24}{60} \right] = \underline{1.44V}$$

R<sub>Trim</sub> according to E96 ≈ 15kΩ

**REMOTE SENSE**



The output voltage can be adjusted via the Trim and -Sense functions. The maximum output voltage from Trim and -Sense function combined is 60VDC. The maximum allowed voltage between +Sense and +Vout pins is 6VDC. Derating may be required when using trim and/or sense functions.

A minimum capacitance value of 100µF is required across the output.

- R<sub>w</sub> ... wire losses
- R<sub>trim</sub> ... trim resistor

**Specifications** (measured @ Ta= 25°C, 2.5m/s, nom. Vin, 24Vout and after warm-up unless otherwise stated)

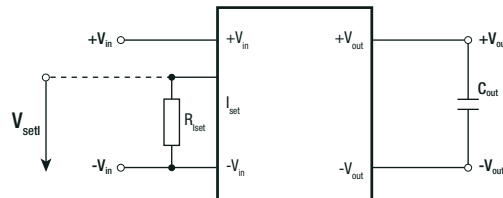
| REGULATIONS        |                                                      |                                            |
|--------------------|------------------------------------------------------|--------------------------------------------|
| Parameter          | Condition                                            | Value                                      |
| Output Accuracy    | exclusive R <sub>Trim</sub> tolerances               | ±0.5% typ.                                 |
| Line Regulation    | low line to high line, full load                     | ±1.0% typ.                                 |
| Load Regulation    | 0% to 100% load                                      | -4.0% x Vout x (Iout/Iout <sub>max</sub> ) |
| Transient Response | 25% load step<br>recovery time                       | 600mV max.<br>200µs typ.                   |
| Remote Sense       | between +Vout and +Sense<br>between -Vout and -Sense | 1.0VDC max.<br>0.2VDC max.                 |

| PROTECTIONS                          |                                                |                                             |
|--------------------------------------|------------------------------------------------|---------------------------------------------|
| Parameter                            | Condition                                      | Value                                       |
| Input Over Voltage Protection        | 150ms delay                                    | 65VDC                                       |
| Input Over Current Protection        | low line to high line                          | latch off, 55A typ.                         |
| Output Short Circuit Protection      | fixed<br>using I <sub>set</sub> <sup>(7)</sup> | hiccup mode, 55A typ.<br>hiccup mode, 0-50A |
| Output Over Voltage Protection (OVP) |                                                | latch off, 65VDC typ.                       |
| Over Temperature Protection (OTP)    | case temperature (measured on tc point)        | 110°C                                       |

**Notes:**

Note7: The RBBA3000 series offers the feature of trimming the output current over a range between 0A and 50A by using an external resistor between the I<sub>set</sub> and the -Vin pin (1% recommended).

**Output Current Setting**



- Iout<sub>max</sub> = maximum output current [A]
- Iout<sub>set</sub> = trimmed output current [A]
- k<sub>1</sub>, k<sub>2</sub>, k<sub>3</sub> = trim up factor [ ]
- V<sub>set</sub> = set voltage [VDC]
- R<sub>iset</sub> = trim resistor [kΩ]

| Iout <sub>max</sub> | k <sub>1</sub> | k <sub>2</sub> | k <sub>3</sub> |
|---------------------|----------------|----------------|----------------|
| 50A                 | 25             | 3.3            | 2.5            |

**Calculation:**

$$R_{iset} = \frac{k_1 \times I_{out\_set}}{k_2 \times I_{out\_max} - k_3 \times I_{out\_set}}$$

$$V_{set} = k_3 \times \left[ \frac{I_{out\_set}}{I_{out\_max}} \right]$$

Additionally the I<sub>set</sub> pin can be driven from an external voltage source:

**Practical Example RBBA3000-50:**

$$R_{iset} = \frac{25 \times 40}{3.3 \times 50 - 2.5 \times 40} = \underline{\underline{15k38\Omega}}$$

$$V_{set} = 2.5 \times \left[ \frac{40}{60} \right] = \underline{\underline{1.67V}}$$

R<sub>iset</sub> according to E96 ≈ 15k4Ω

**Specifications** (measured @ Ta= 25°C, 2.5m/s, nom. Vin, 24Vout and after warm-up unless otherwise stated)

**ENVIRONMENTAL**

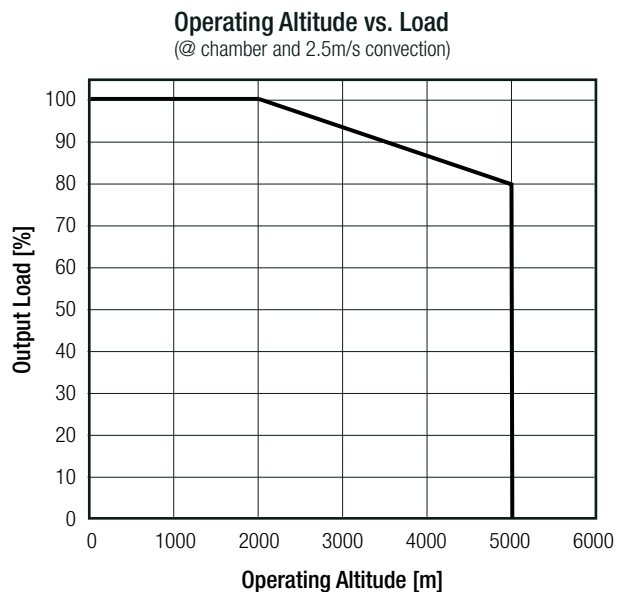
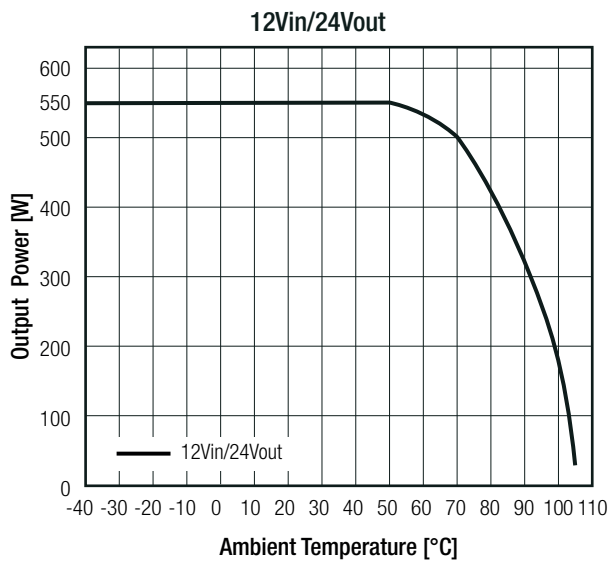
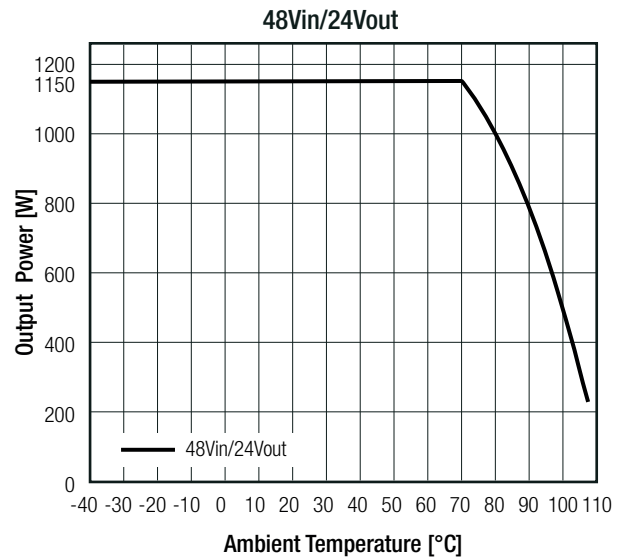
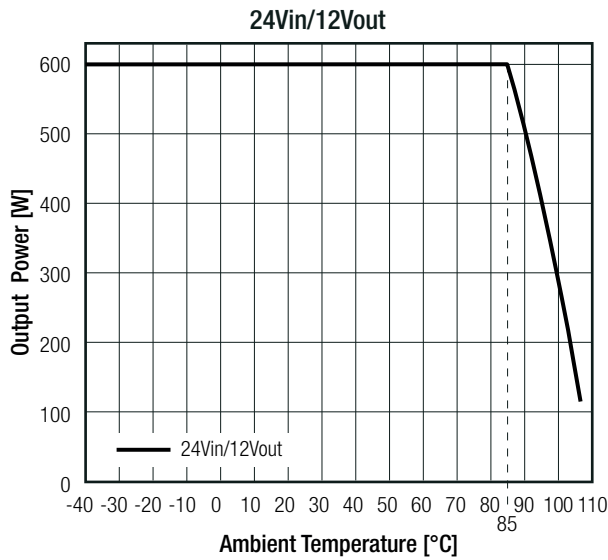
| Parameter                                  | Condition                                                                                | Value                        |
|--------------------------------------------|------------------------------------------------------------------------------------------|------------------------------|
| Operating Temperature Range <sup>(8)</sup> | @ 2.5m/s convection (refer to <b>"Derating Graph"</b> )                                  | -40°C to +85°C               |
| Maximum Baseplate Temperature              |                                                                                          | +110°C                       |
| Temperature Coefficient <sup>(8)</sup>     | @ 2.5m/s convection and baseplate mounting                                               | 0.05%/K                      |
| Thermal Impedance                          | @ 2.5m/s convection and baseplate mounting                                               | 1.2K/W                       |
| Operating Altitude <sup>(8)</sup>          | @ 2.5m/s convection (refer to <b>"Operating Altitude vs. Load"</b> )                     | 5000m                        |
| Operating Humidity                         | non-condensing                                                                           | 5% - 95% RH max.             |
| MTBF                                       | according Telcordia SR332<br>Method I Reliability Prediction at 48Vin, 25°C and 80% load | 1300 x 10 <sup>3</sup> hours |

**Notes:**

Note8: tested with a test PCB 185x185mm 105µm copper, 6 layer

**Derating Graph <sup>(8)</sup>**

(@ chamber and 2.5m/s convection)



continued on next page

**Specifications** (measured @ Ta= 25°C, 2.5m/s, nom. Vin, 24Vout and after warm-up unless otherwise stated)

**Thermal Calculation:**

$$P_{diss} = P_{in} - P_{out} = \frac{P_{out}}{\eta} - P_{out}$$

$$T_{over} = R_{th} \times P_{diss}$$

$$T_{amb} = T_{base\ max.} - T_{over}$$

- T<sub>base max.</sub> = max. baseplate temperature [°C]
- T<sub>over</sub> = temperature losses [°C]
- T<sub>amb</sub> = ambient temperature [°C]
- P<sub>out</sub> = output power [W]
- η = efficiency (see graph) [%]
- P<sub>diss</sub> = internal losses [W]
- R<sub>th</sub> = thermal impedance [K/W]

**Practical Example:**

Take the **RBBA3000-50** with 48V Input Voltage, 24V Output Voltage, 50A Output Current:  
What is the maximum ambient operating temperature?

- T<sub>base max</sub> = 110°C
- P<sub>out</sub> = 1k2W
- η = 96%
- R<sub>th</sub> = 1.2K/W<sup>(8)</sup>

$$P_{diss} = \frac{1k2W}{0.96} - 1k2W = 50W$$

$$T_{over} = 1.2 \times 50 = 60K$$

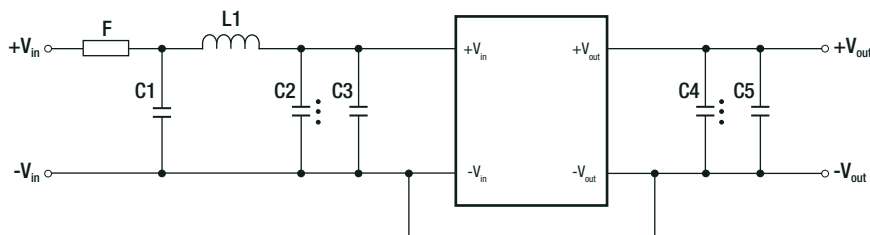
$$T_{amb} = 110 - 60 = +50°C$$

**SAFETY AND CERTIFICATIONS**

| Certificate Type (Safety)                                                                        | Report / File Number | Standard                     |
|--------------------------------------------------------------------------------------------------|----------------------|------------------------------|
| Audio/video, information and communication technology equipment. Safety requirements (CB Scheme) | E224736-A6003-CB-1   | IEC62368-1:2014 2nd Edition  |
| Audio/video, information and communication technology equipment. Safety requirements             |                      | EN62368-1:2014 + A11:2017    |
| RoHS2+                                                                                           |                      | RoHS 2011/65/EU + AM2015/863 |

| EMC Compliance                                                                                  | Condition                                      | Standard / Criterion   |
|-------------------------------------------------------------------------------------------------|------------------------------------------------|------------------------|
| Electromagnetic compatibility of multimedia equipment - Emission requirements                   | with external filter<br>(see suggestion below) | EN55032, Class A and B |
| Information technology equipment - Immunity characteristics - Limits and methods of measurement |                                                | EN55024                |

**EMC Filtering Suggestions according to EN55032**



**Component List Class A and B**

| C1                      | L1                | C2                      | C3                       | C4                      | C5                      |
|-------------------------|-------------------|-------------------------|--------------------------|-------------------------|-------------------------|
| 2.2µF/100V MLCC<br>4pcs | 3.3µH/100A<br>1pc | 470µF/100V E-Cap<br>1pc | 2.2µF/100V MLCC<br>18pcs | 470µF/100V E-Cap<br>1pc | 2.2µF/100V MLCC<br>4pcs |

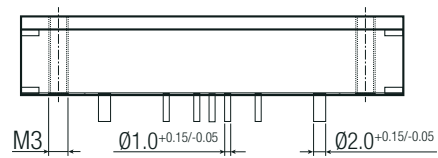
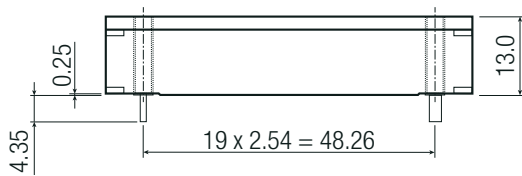
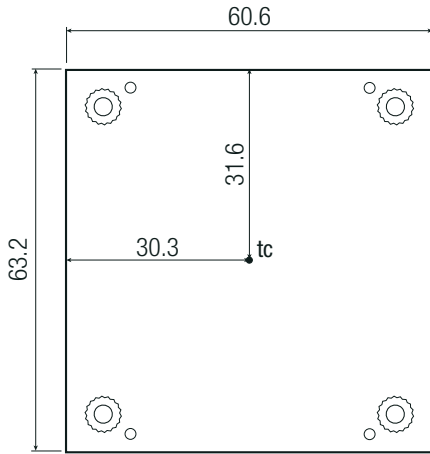
**DIMENSION AND PHYSICAL CHARACTERISTICS**

| Parameter         | Type                         | Value                                                            |
|-------------------|------------------------------|------------------------------------------------------------------|
| Material          | baseplate<br>case<br>potting | aluminium<br>plastic (UL94 V-2)<br>low smoke silicone (UL94 V-0) |
| Dimension (LxWxH) |                              | 60.60 x 63.2 x 13.0mm                                            |
| Weight            |                              | 155g typ.                                                        |

continued on next page

**Specifications** (measured @ Ta= 25°C, 2.5m/s, nom. Vin, 24Vout and after warm-up unless otherwise stated)

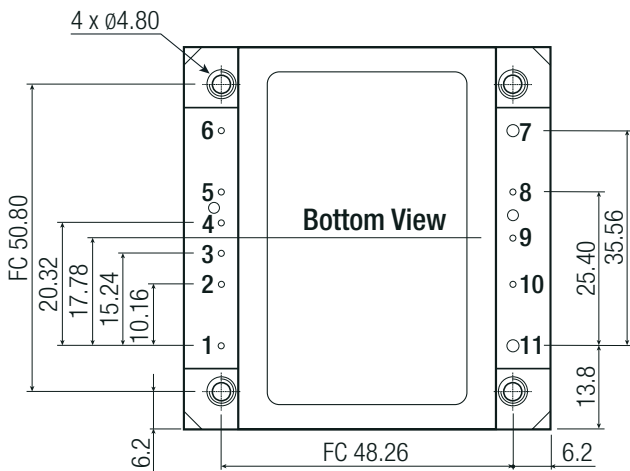
Dimension Drawing (mm)



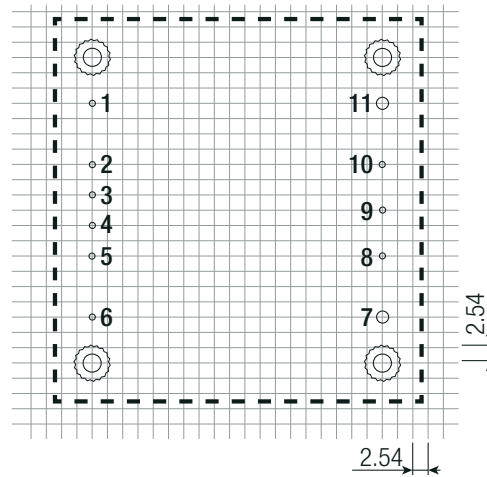
Pin Information

| Pin # | Single                     |
|-------|----------------------------|
| 1     | +Vin                       |
| 2     | CTRL                       |
| 3     | SyncIn<br>connect to -Vin  |
| 4     | Iset                       |
| 5     | Ishare                     |
| 6     | -Vin                       |
| 7     | -Vout                      |
| 8     | -Sense<br>connect to -Vout |
| 9     | Trim                       |
| 10    | +Sense                     |
| 11    | +Vout                      |

xx.x ± 0.5mm  
xx.xx ± 0.25mm  
FC= fixing center  
max. tightening torque  
of mounting holes=0.60Nm

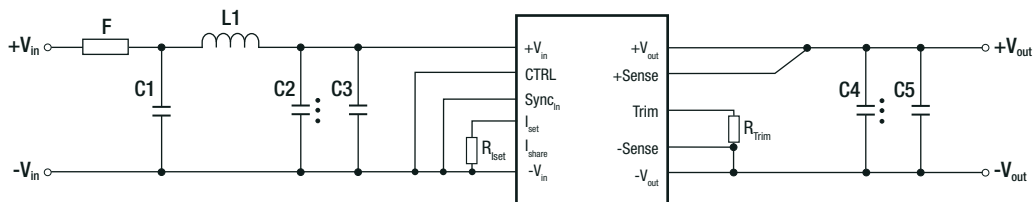


Recommended Footprint Details



### INSTALLATION AND APPLICATION

#### 48Vin to 24Vout converter



| Input | C1                      | L1                | C2                      | C3                       | R <sub>iset</sub> | R <sub>trim</sub> | C4                      | C5                      | Output        |
|-------|-------------------------|-------------------|-------------------------|--------------------------|-------------------|-------------------|-------------------------|-------------------------|---------------|
| 48Vin | 2.2uF/100V MLCC<br>4pcs | 3.3uH/100V<br>1pc | 470uF/100V E-Cap<br>1pc | 2.2uF/100V MLCC<br>18pcs | 15k4Ω             | 23k7Ω             | 470uF/100V E-Cap<br>1pc | 2.2uF/100V MLCC<br>4pcs | 24Vout<br>40A |

**Specifications** (measured @ Ta= 25°C, 2.5m/s, nom. Vin, 24Vout and after warm-up unless otherwise stated)

| PACKAGING INFORMATION       |                |                        |
|-----------------------------|----------------|------------------------|
| Parameter                   | Type           | Value                  |
| Packaging Dimension (LxWxH) | tray           | 380.0 x 230.0 x 20.0mm |
| Packaging Quantity          |                | 12pcs                  |
| Storage Temperature Range   |                | -55°C to +125°C        |
| Storage Humidity            | non-condensing | 95% RH max.            |

The product information and specifications may be subject to changes even without prior written notice. The product has been designed for various applications; its suitability lies in the responsibility of each customer. The products are not authorized for use in safety-critical applications without RECOM's explicit written consent. A safety-critical application is an application where a failure may reasonably be expected to endanger or cause loss of life, inflict bodily harm or damage property. The applicant shall indemnify and hold harmless RECOM, its affiliated companies and its representatives against any damage claims in connection with the unauthorized use of RECOM products in such safety-critical applications.



# Mouser Electronics

Authorized Distributor

Click to View Pricing, Inventory, Delivery & Lifecycle Information:

[RECOM:](#)

[RBBA3000-50](#)