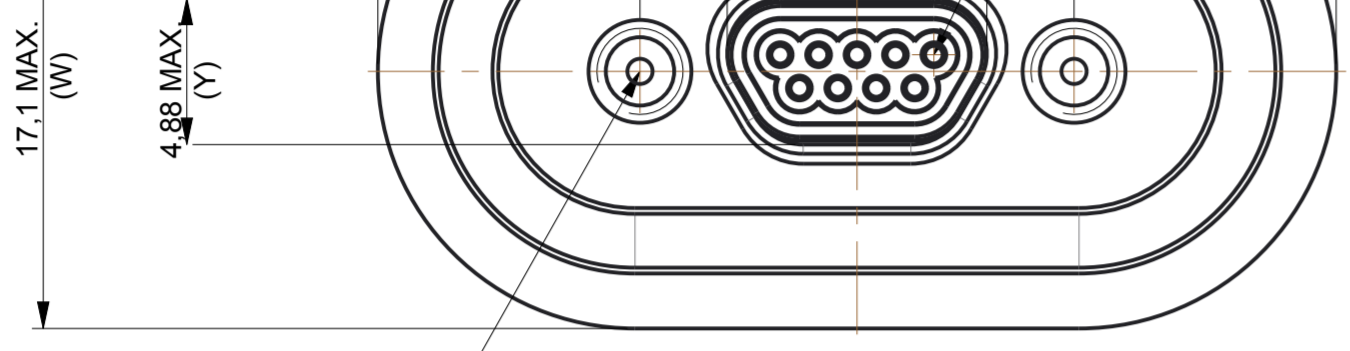
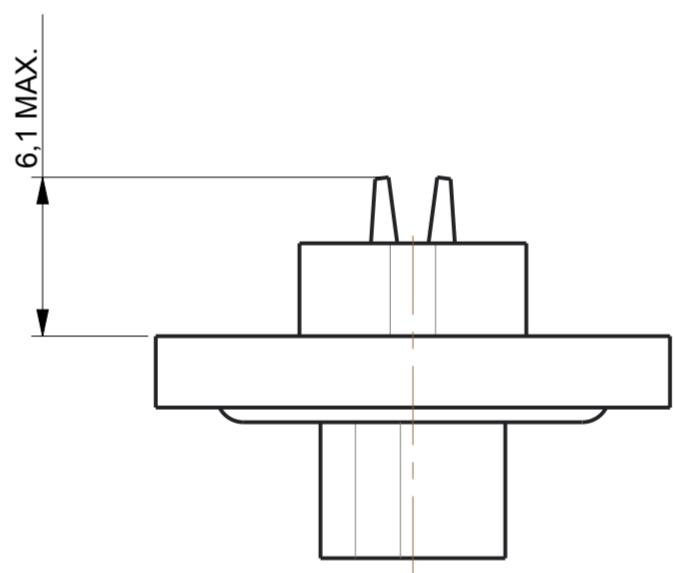
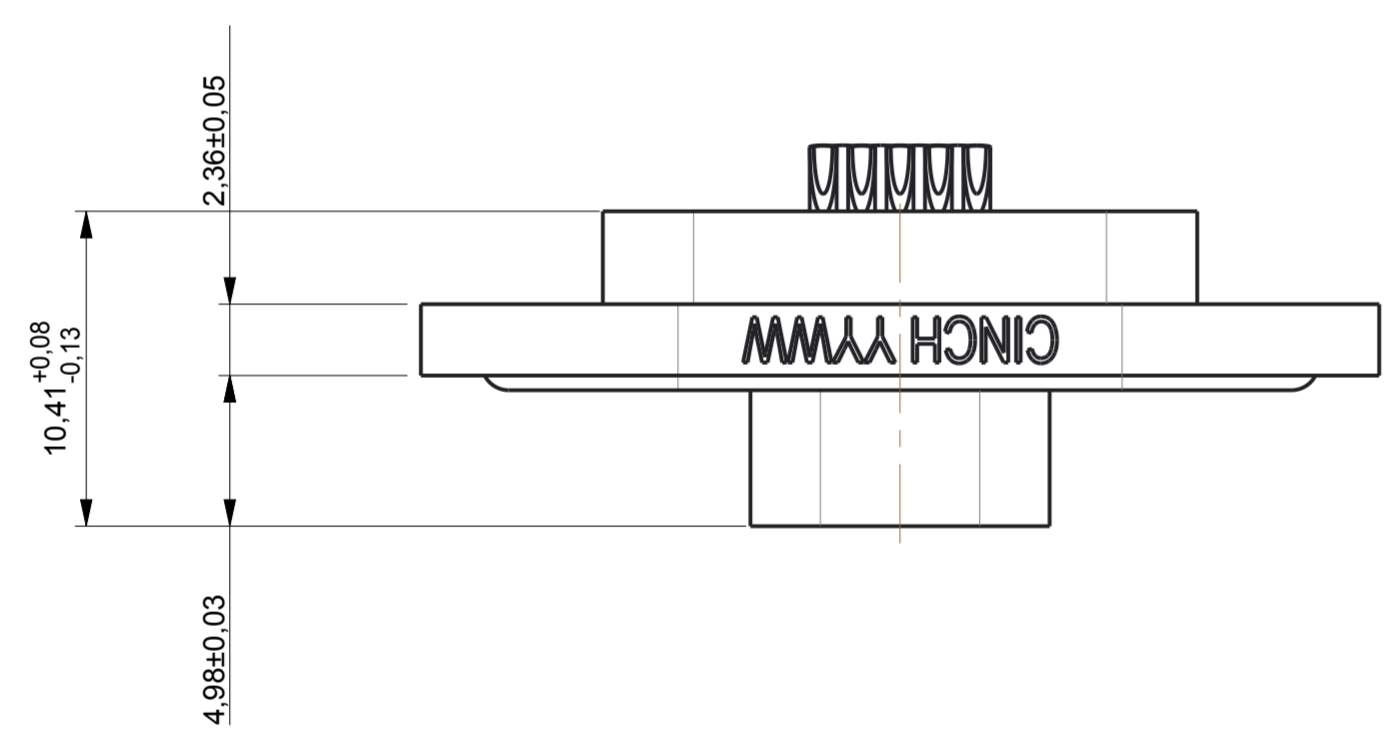
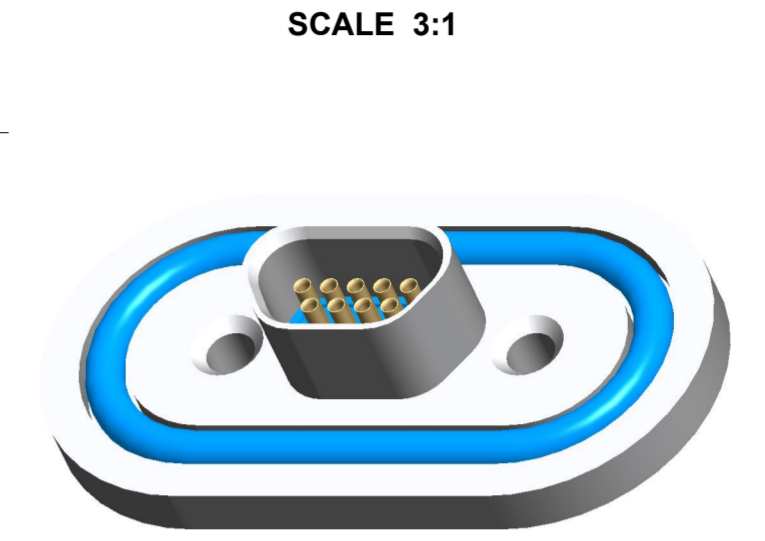
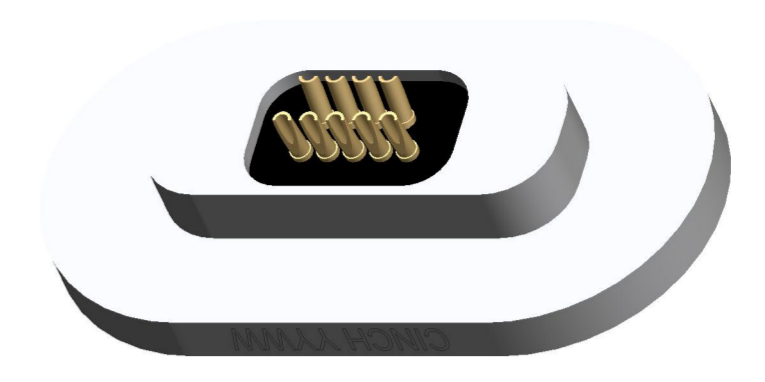
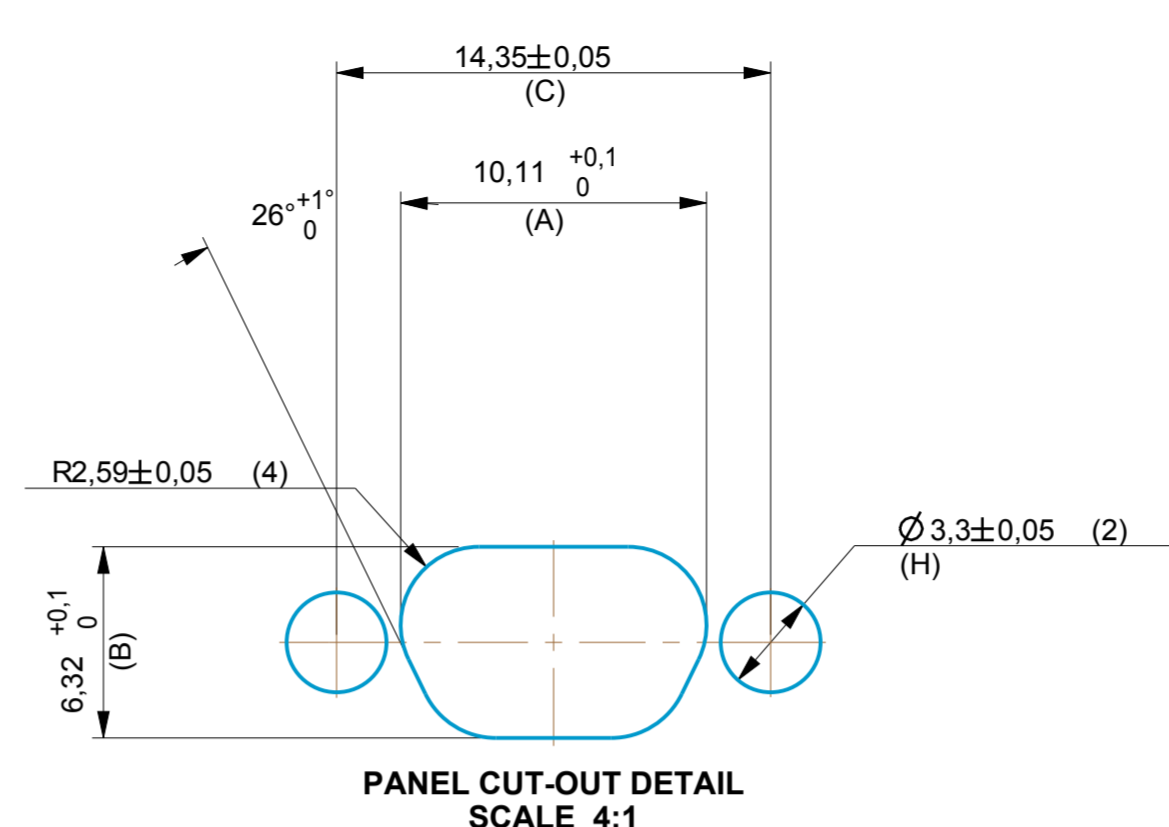


RELEVANT SPEC: MIL-DTL-83513 INTERFACE SHT 1 OF 1
 PROJ. MODEL FILE: DN000100000000N EX No. NA
IF IN DOUBT - ASK
 ALL DIMENSIONS ARE IN mm



4-40 UNC - 2B TAP ∇ 4,000
 #43 DRILL (2,261) ∇ 4,471



PART NUMBER	A	B	C	H	DESCRIPTION2		
DN0000809	10,11	6,32	14,35	3,30	9W REVERSE MOUNT PANEL		
DN0000815	13,92	6,32	18,16	3,30	15W REVERSE MOUNT PANEL		
DN0000821	17,73	6,32	21,97	3,30	21W REVERSE MOUNT PANEL		
DN0000825	20,27	6,32	24,51	3,30	25W REVERSE MOUNT PANEL		
DN0000831	24,08	6,32	28,34	3,30	31W REVERSE MOUNT PANEL		
DN0000837	27,89	6,32	32,13	3,30	37W REVERSE MOUNT PANEL		
DN0000851	26,62	7,42	30,86	3,30	51W REVERSE MOUNT PANEL		
DN0000810	39,00	8,52	45,72	4,10	100W REVERSE MOUNT PANEL		
PART NUMBER	SALES_CODE	L_MAX	M_MAX	R_BASIC	W_MAX	Y_MAX	DESCRIPTION2
DN00010000900N	DCDH-9SSBN	31,78	8,64	14,35	17,10	4,88	9W SOLDERPOT SOCKET ASSEMBLY
DN000100001500N	DCDH-15SSBN	34,26	12,45	18,16	17,10	4,88	15W SOLDERPOT SOCKET ASSEMBLY
DN000100002100N	DCDH-21SSBN	39,25	16,26	21,97	17,10	4,88	21W SOLDERPOT SOCKET ASSEMBLY
DN000100002500N	DCDH-25SSBN	41,76	18,80	24,51	17,10	4,88	25W SOLDERPOT SOCKET ASSEMBLY
DN000100003100N	DCDH-31SSBN	44,23	22,61	28,32	17,10	4,88	31W SOLDERPOT SOCKET ASSEMBLY
DN000100003700N	DCDH-37SSBN	49,22	26,42	32,13	17,10	4,88	37W SOLDERPOT SOCKET ASSEMBLY
DN000100005100N	DCDH-51SSBN	48,60	25,15	30,86	18,20	5,99	51W SOLDERPOT SOCKET ASSEMBLY

NOTES:

- DIMENSIONS ARE FOR REFERENCE ONLY.
- CUSTOMER DRAWING ONLY. NOT USED FOR CINCH MANUFACTURE.
- PART MARK CONNECTORS WITH CINCH AND DATE-CODE.
- CONNECTOR TO BE HERMETICALLY TESTED TO 1×10^{-8} cc/sec @ 1 ATMOSPHERE HELIUM.

MATERIAL SPECIFICATIONS:

- CONNECTOR SHELL: >ASTM ALLOY< SAE-AMS-QQ-A-250. ELECTROLESS Ni PER SAE-AMS-C-26074.
- CONTACT (FEMALE SOCKET): >Cu ALLOY<. Au PER MIL-DTL-45204, TYPE 1.
- INSULATOR: >PBT< PER MIL-M-24519.
- INTERFACIAL GASKET: >FVMQ< PER MIL-R-25988 OR >PMQ< PER ZZ-R-765.
- HARDWARE: >303SS< PASSIVATE DIP PER SAE-AMS-QQ-P-35. HARDWARE TO BE PURCHASED SEPERATELY TO SUIT PANEL THICKNESS.
- DUSTCAP: >LDPE< OR ANTI-STATIC >HDPE<.

GENERAL SPECIFICATIONS:

- ALL OTHER DETAILS AND DIMENSIONS TO BE AS PER MIL-DTL-83513 OR CINCH HERMETIC DURA-CON CATALOGUE.

THIS DRAWING IS COPYRIGHT AND IS ISSUED ON CONDITION IT IS NOT COPIED, REPRODUCED OR DISCLOSED TO A THIRD PARTY WITHOUT THE CONSENT IN WRITING OF Cinch CONNECTIVITY SOLUTIONS LTD. ATTENTION IS DRAWN TO THE FACT THE ARTICLE DISCLOSED MAY BE COVERED BY BRITISH OR FOREIGN PATENTS, GRANTED OR PENDING OR REGISTERED DESIGN.

TITLE		GEN. TOLERANCES		FINISHING		FINISHING		FINISHING	
DATE	PRELIM.	2 DEC. PL.	1 DEC. PL.	0 DEC. PL.	ANGULAR	TOOL R MAX.	FINISHED HARDNESS	FINISH TREATMENT	COLOR
02-Feb-17		±0.1	±0.2	±0.5	±1	0.18			
HERMEYC MICROMINIATURE		SOLDERPOT		RAW MATL					
9-51W SOCKET ASSEMBLY		MATERIAL SPECIFICATION		FINISHED HARDNESS		FINISH TREATMENT		COLOR	
DATE 02-Feb-17		SCALE 4:1		SCALE 3:1					
DRN MBARRACLOUGH		SCALE 4:1		SCALE 3:1					
APPD		CHD		NOT		NOT		NOT	

Mouser Electronics

Authorized Distributor

Click to View Pricing, Inventory, Delivery & Lifecycle Information:

[Cinch Connectivity Solutions:](#)

[DCDH-25SSBN](#) [DCDH-15SSBN](#) [DCDH-21SSBN](#) [DCDH-31SSBN](#) [DCDH-37SSBN](#) [DCDH-51SSBN](#) [DCDH-9SSBN](#)